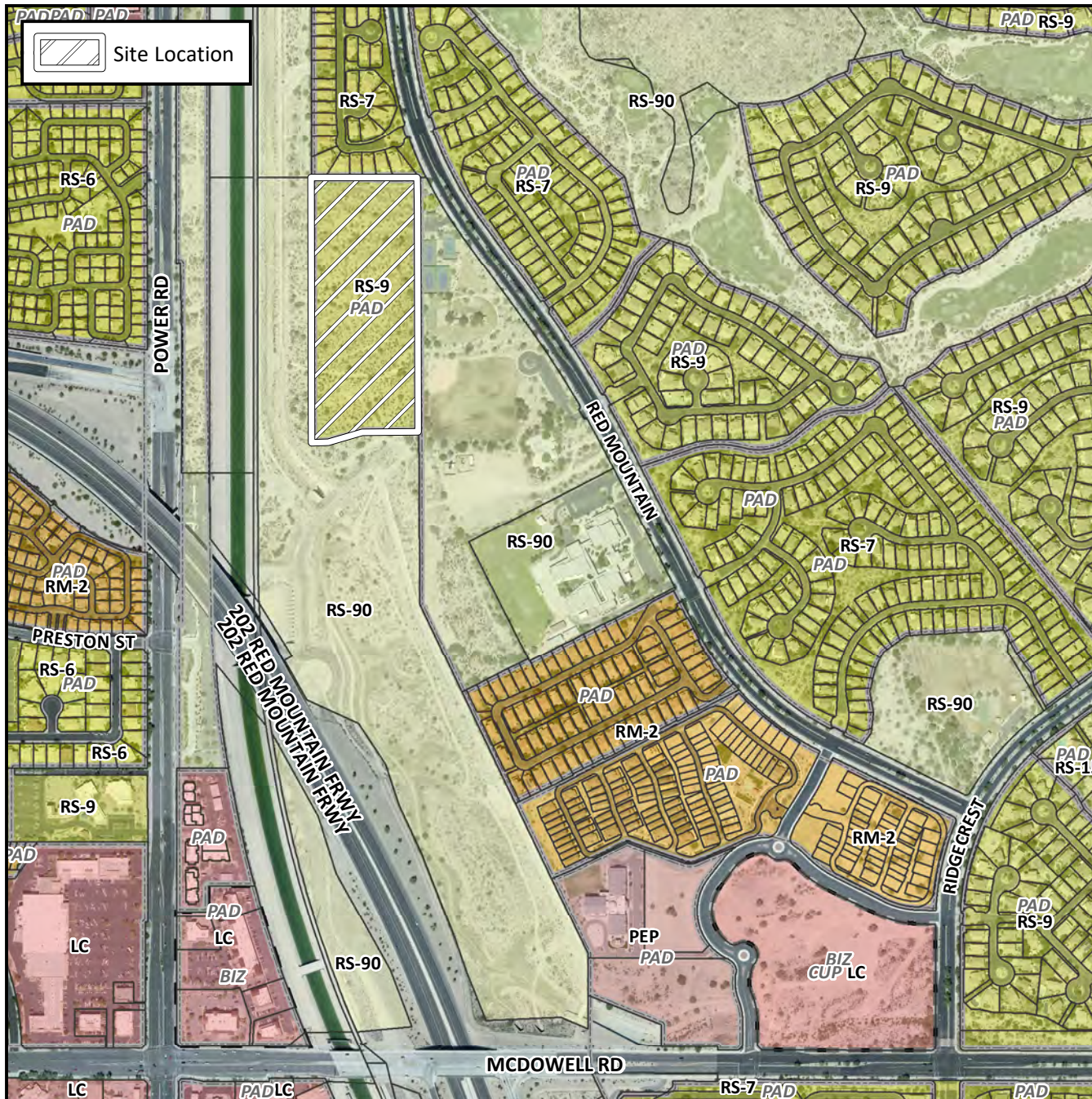


Final Plat Vicinity Map



Case Details

Project:

Sanctuary at Las Sendas

Language:

"Sanctuary at Las Sendas". (District 5) The 3200 to 3300 blocks of North Red Mountain (west side) Located north and east of Power and McDowell Roads. 50 RS-9-PAD single residence lots. (13 ± acres). Desert Vista 100, LLC., Developer; Gabriel S. Rios, Wood/Patel, Surveyor.

