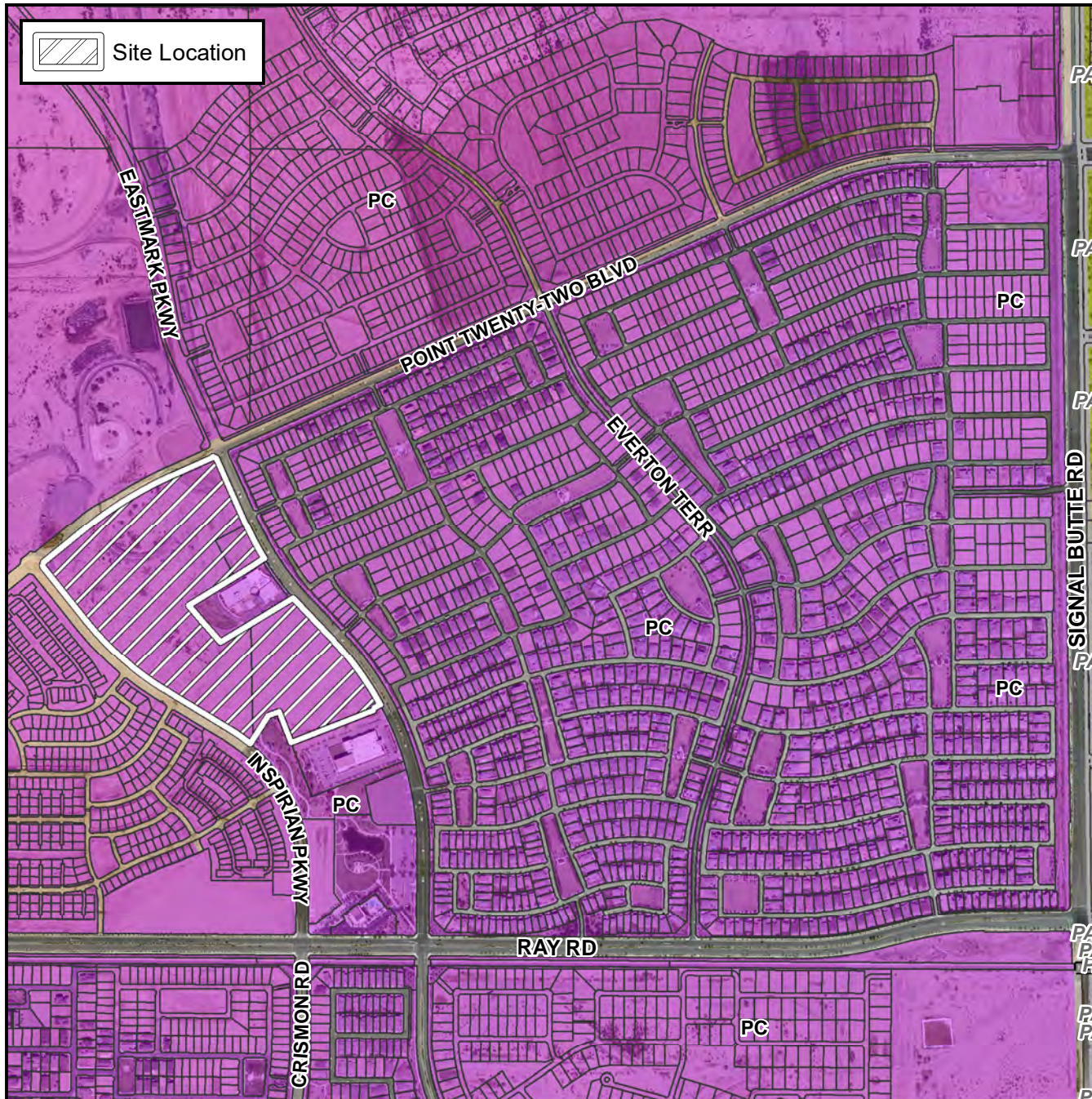


Preliminary Plat Vicinity Map



Case Details

Project:

Eastmark DU7 Parcels 7-52, 7-53, and 7-54

Site / Address:

"Eastmark DU7 Parcels 7-52, 7-53, and 7-54". (District 6). The 4800 to 5000 blocks of South Inspirian Parkway (east side), the 9900 to 10000 blocks of East Point Twenty-Two Boulevard (south side) and the 4700 to 4900 blocks of South Eastmark Parkway (west side). Located north of Ray Road and west of Signal Butte Road. (42.4 ± acres).

