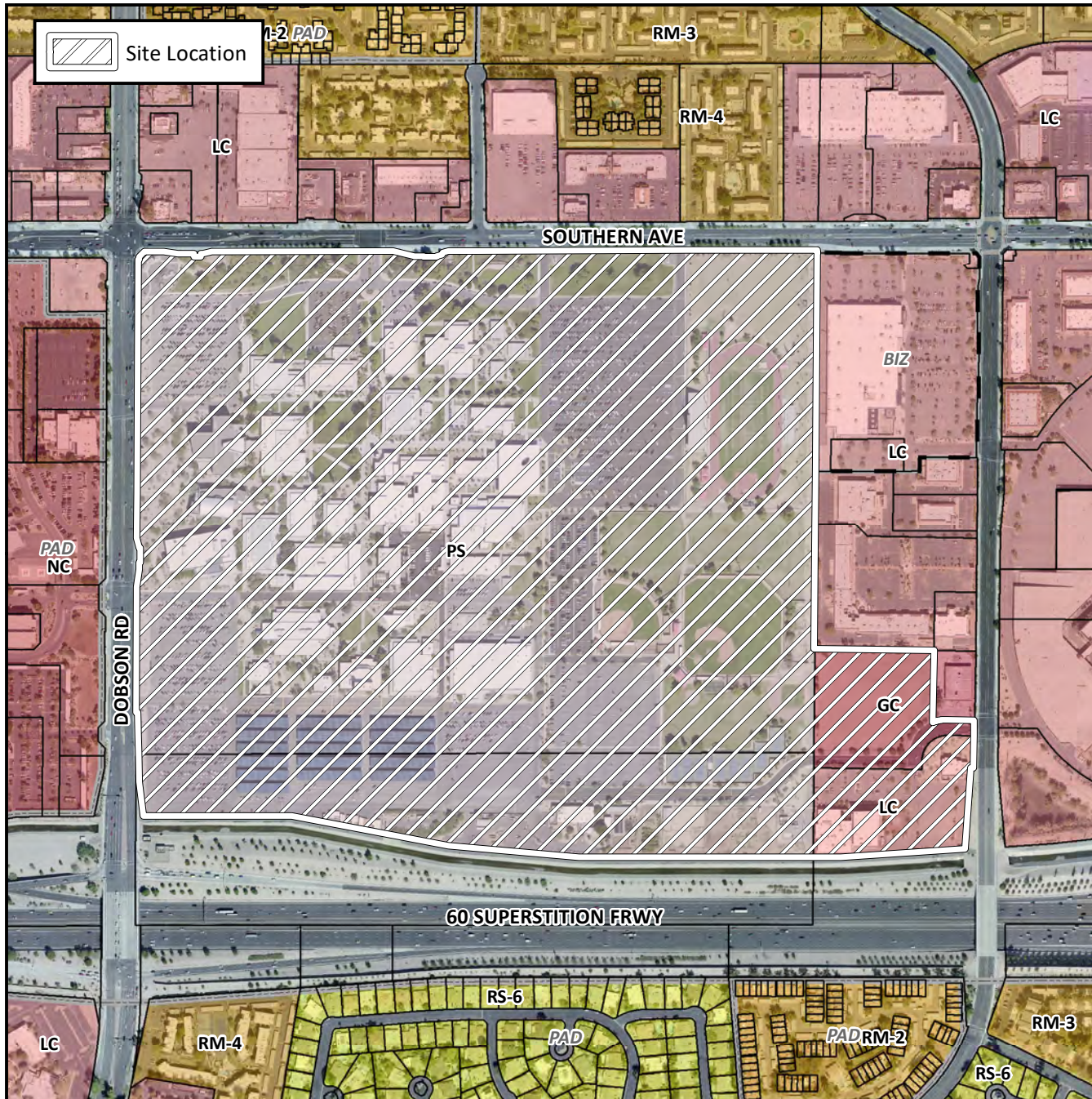


Planning and Zoning Vicinity Map: ZON17-00532



Case Details

CASE:

ZON17-00532

PRE-PLAT : ☐

SITE / ADDRESS:

The 1600 through 2000 blocks of West Southern Avenue (south side) and the 1200 through 1500 blocks of South Dobson Road (east side) and the 1400 through 1500 blocks of South Longmore (west side). Located on the southeast corner of Southern Avenue and Dobson Road, (The Mesa Community College Campus). (145± acres). (District 3)

REQUEST:

Rezoning from PS, LC and GC to GC-PAD. This request will allow for private development within the Mesa Community College campus.

