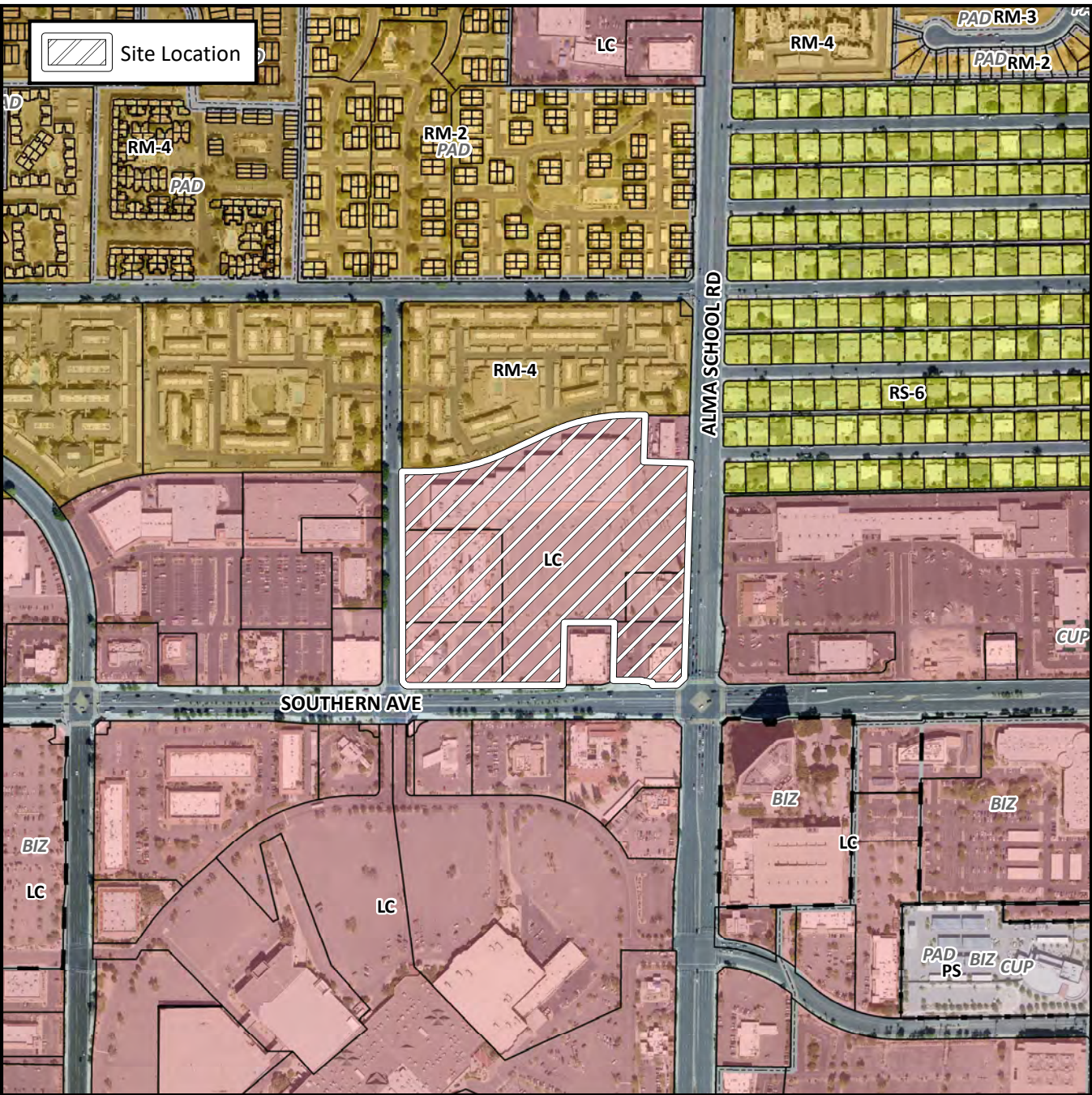


## Planning and Zoning Vicinity Map: ZON18-00066



### Case Details

ZON18-00066

**PRE-PLAT :** ☒

**SITE / ADDRESS:**

The 1000 through 1100 blocks of South Alma School Road (west side) and the 1200 through 1300 blocks of West Southern Avenue (north side). Located at the northwest corner of Alma School Road and Southern Avenue. (16± acres). (District 3)

**REQUEST:**

Rezoning from LC to RM-5-PAD for 10.5± acres, Rezoning from LC to LC-PAD for 5.5± acres; and Site Plan Review for 16± acres. This request will allow for development of multi-residential and commercial uses.

