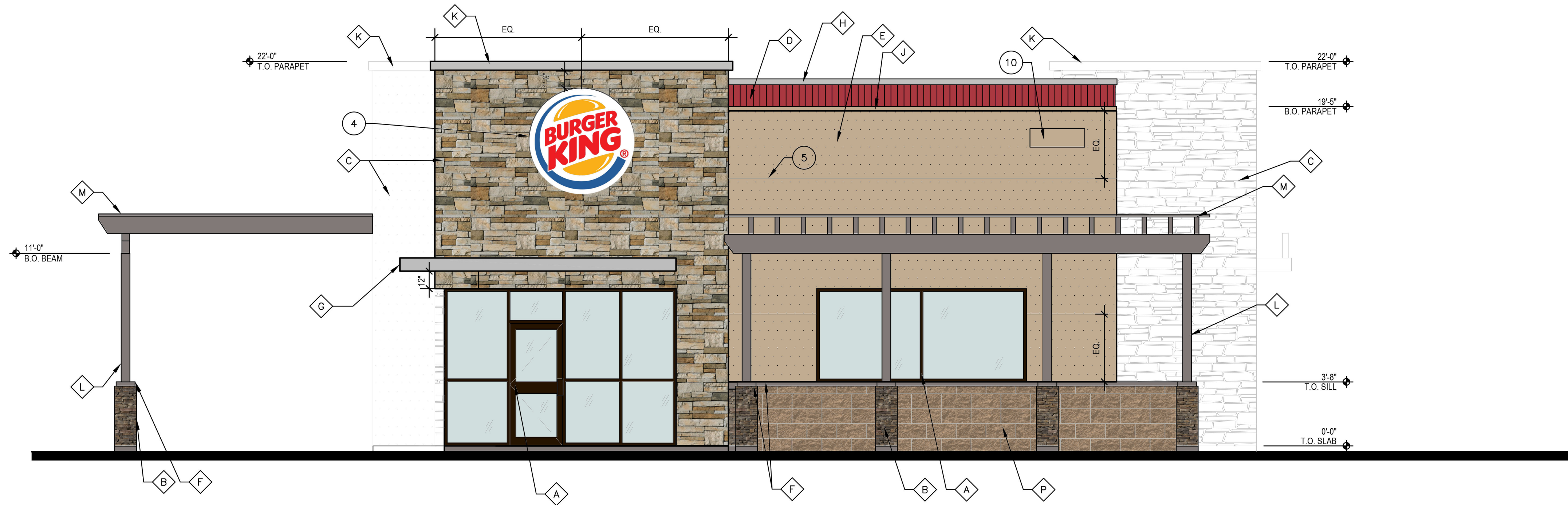




1 Main Entrance Elevation
1/4" = 1'-0"



2 Side Entrance Elevation
1/4" = 1'-0"

Finish Legend

A	ALUMINUM STOREFRONT #40 DARK BRONZE - KAWNEER
B	CULTURED STONE VENEER - OWENS CORNING SOUTHERN LEDGESTONE, (W/ GROUTED JOINTS). PATTERN: 2027 'WOLF CREEK'
C	CULTURED STONE VENEER - BORAL, COUNTRY LEDGESTONE (W/ GROUTED JOINTS), 'ASPEN'
D	PREFABRICATED PARAPET BAND - CORRUGATED METAL PRE-FINISHED LEKTRON (OR APPROVED EQUAL) "AMAZING" 04YR 11/537
E	EIFS FIELD STUCCO WITH REVEAL JOINTS AS INDICATED INTERGRAL COLOR / SAND FINISH PPG "TANNERS TAUPE"
F	STUCCO / STONE ACCENT PAINT- "MONTEREY CLIFFS" 10YY 14/080
G	SUSPENDED CANOPY / VALENCE - PREMANUF. ALUMINUM CONST. BY APPROVED SUPPLIER W/ CLEAR ALUMINUM FINISH
H	METAL COPING, TOP OF LIGHT BAND WALL CAP. W.P. HICKMAN SYSTEMS (OR EQ.) PERMA SNAP W/ PAINTED FINISH COLOR "SILVERSMITH"
J	METAL COPING, BOTTOM OF LIGHT BAND. W.P. HICKMAN SYSTEMS (OR EQ.) PERMA SNAP W/ PAINTED FINISH COLOR TO MATCH PPG "TANNERS TAUPE"
K	METAL COPING, TOP OF ARCHON. W.P. HICKMAN SYSTEMS (OR EQ.) PERMA SNAP W/ PAINTED FINISH COLOR "SILVERSMITH"
L	6"X6" WOOD COLUMN PAINT TO MATCH- "MONTEREY CLIFFS"
M	COVERED WOOD CANOPY PAINT TO MATCH - "MONTEREY CLIFFS"
O	OPEN WOOD TRELLIS PAINT TO MATCH - "MONTEREY CLIFFS"
P	SUPERLITE INTEGRAL COLOR SPLIT FACE CMU COLOR - '924WR'

Keynotes

- NOT ALL KEYNOTES ARE USED ON THIS SHEET.
- SES ROOM.
 - FIRE RISER ROOM.
 - HOLLOW METAL DOOR AND FRAME, PAINT TO MATCH COLOR 'F', MONTEREY CLIFFS.
 - SIGNAGE TO BE UNDER SEPARATE PERMIT.
 - EIFS REVEAL, TYPICAL.
 - LOCATION OF KNOX BOX 3200 SERIES RECESSED MOUNTED. VERIFY LOCATION
WITH CITY FIRE DEPARTMENT REQUIREMENTS AND INSTALL SIGNAGE AS REQUIRED.
 - GAS METER LOCATION.
 - LIGHT FIXTURE, TYPICAL.
 - BACK SIDE OF TOWER WALL, BEYOND.
 - INDICATES ADDRESS NUMBERS LOCATION, HEIGHT AND SIZE. ALL ADDRESS
NUMBERS SHALL BE ON CONTRASTING BACKGROUNDS. NUMBERS SHALL BE 12" HIGH
MINIMUM PER CITY STANDARDS.
 - MERCHANDISING AREA.

General Notes

- A. ALL SIGNAGE SHOWN FOR REFERENCE ONLY. SIGNAGE SHALL BE SUBMITTED
UNDER SEPARATE REVIEW AND APPROVAL.
- B. ALL GROUND AND ROOF MOUNTED EQUIPMENT, INCLUDING UTILITIES SHALL BE
SCREENED FROM VIEW.
- C. ALL EIFS SHALL BE INSTALLED PER MANUFACTURER'S RECOMMENDATIONS AND
ICC-ES REPORT #ESR-1232.

NOT FOR
CONSTRUCTION

ONE!
ARCHITECTURE

8801 N. Central Ave. Suite 101
Phoenix, Arizona 85020
Phone: 602.266.2712
Fax: 602.266.1688

www.ONEarchitecture.us

Principal:

Dustin Curtis

dustin.curtis@onearchitecture.us

Project Manager:

Nathan Bisch

nathan.bisch@onearchitecture.us

Revisions



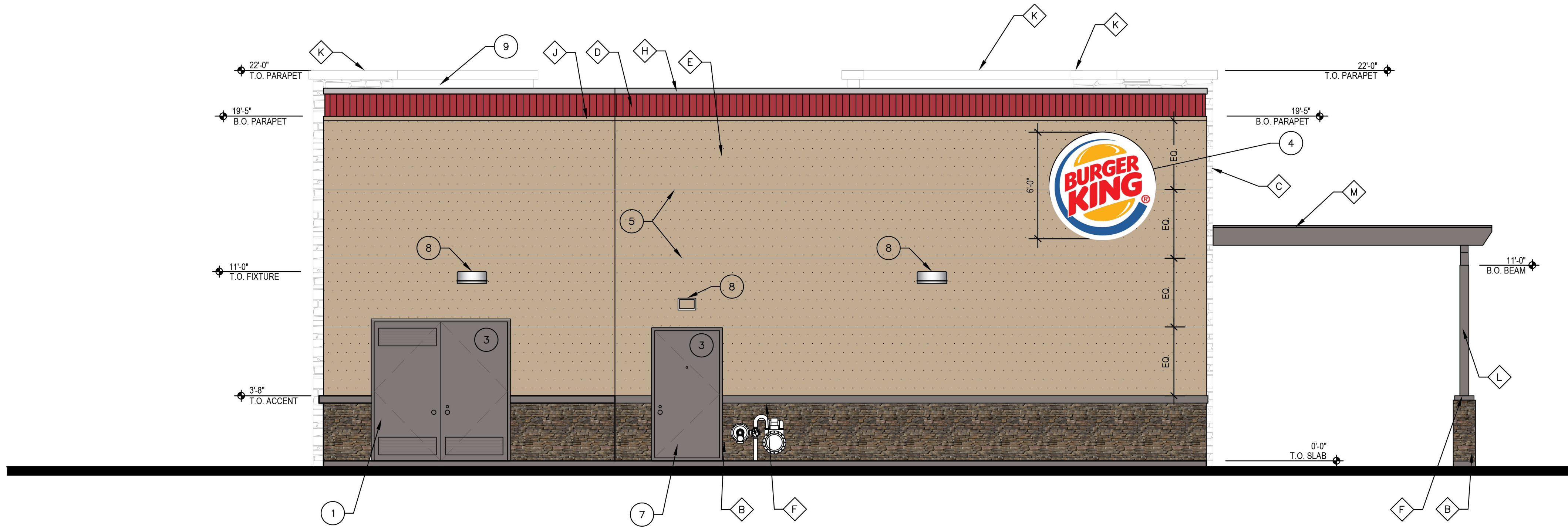
Burger King

SWC of E. Guadalupe Rd.
& S. Hawes Rd.
Mesa, AZ

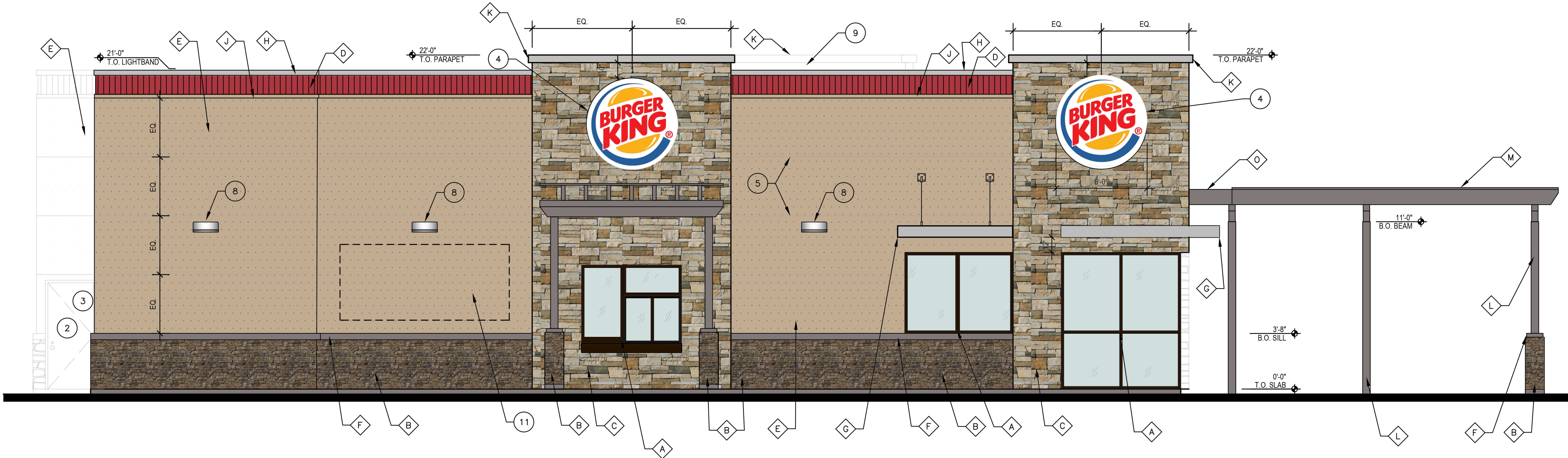
1.17.18
AZ-1698

A4.1

Exterior Elevations



3 Back Elevation
1/4" = 1'-0"



4 Drive Thru Elevation
1/4" = 1'-0"

Finish Legend

A	ALUMINUM STOREFRONT #40 DARK BRONZE - KAWNEER
B	CULTURED STONE VENEER - OWENS CORNING SOUTHERN LEDGESTONE, (W/ GROUTED JOINTS), PATTERN: 2027 'WOLF CREEK'
C	CULTURED STONE VENEER - BORAL, COUNTRY LEDGESTONE (W/ GROUTED JOINTS), 'ASPEN'
D	PREFABRICATED PARAPET BAND - CORRUGATED METAL PRE-FINISHED LEKTRON (OR APPROVED EQUAL) 'AMAZING' 04YR 11/537
E	EIFS FIELD STUCCO WITH REVEAL JOINTS AS INDICATED INTERGRAL COLOR / SAND FINISH PPG 'TANNERS TAUPE'
F	STUCCO / STONE ACCENT PAINT- 'MONTEREY CLIFFS' 10YY 14/080
G	SUSPENDED CANOPY / VALENCE - PREMANUF, ALUMINUM CONST. BY APPROVED SUPPLIER W/ CLEAR ALUMINUM FINISH
H	METAL COPING, TOP OF LIGHT BAND WALL CAP, W.P. HICKMAN SYSTEMS (OR EQ.) PERMA SNAP W/ PAINTED FINISH COLOR 'SILVERSMITH'
J	METAL COPING, BOTTOM OF LIGHT BAND, W.P. HICKMAN SYSTEMS (OR EQ.) PERMA SNAP W/ PAINTED FINISH COLOR TO MATCH PPG 'TANNERS TAUPE'
K	METAL COPING, TOP OF ARCHON, W.P. HICKMAN SYSTEMS (OR EQ.) PERMA SNAP W/ PAINTED FINISH COLOR 'SILVERSMITH'
L	6"x6" WOOD COLUMN PAINT TO MATCH- 'MONTEREY CLIFFS'
M	COVERED WOOD CANOPY PAINT TO MATCH - 'MONTEREY CLIFFS'
O	OPEN WOOD TRELLIS PAINT TO MATCH - 'MONTEREY CLIFFS'
P	SUPERLITE INTEGRAL COLOR SPLIT FACE CMU COLOR - '924WR'

Keynotes

- NOT ALL KEYNOTES ARE USED ON THIS SHEET.
- SES ROOM.
 - FIRE RISER ROOM.
 - HOLLOW METAL DOOR AND FRAME, PAINT TO MATCH COLOR 'F', MONTEREY CLIFFS.
 - SIGNAGE TO BE UNDER SEPARATE PERMIT.
 - STUCCO REVEAL, TYPICAL.
 - LOCATION OF KNOX BOX 3200 SERIES RECESSED MOUNTED. VERIFY LOCATION
WITH CITY FIRE DEPARTMENT REQUIREMENTS AND INSTALL SIGNAGE AS REQUIRED.
 - GAS METER LOCATION.
 - LIGHT FIXTURE, TYPICAL.
 - BACK SIDE OF PARAPET WALL, BEYOND.
 - INDICATES ADDRESS NUMBERS LOCATION, HEIGHT AND SIZE. ALL ADDRESS
NUMBERS SHALL BE ON CONTRASTING BACKGROUNDS. NUMBERS SHALL BE 12" HIGH
MINIMUM PER CITY STANDARDS.
 - MERCHANDISING AREA.

General Notes

- A. ALL SIGNAGE SHOWN FOR REFERENCE ONLY. SIGNAGE SHALL BE SUBMITTED
UNDER SEPARATE REVIEW AND APPROVAL.
- B. ALL GROUND AND ROOF MOUNTED EQUIPMENT, INCLUDING UTILITIES SHALL BE
SCREENED FROM VIEW.
- C. ALL EIFS SHALL BE INSTALLED PER MANUFACTURER'S RECOMMENDATIONS AND
ICC-ES REPORT #ESR-1232.

NOT FOR
CONSTRUCTION

ONE!
ARCHITECTURE

8801 N. Central Ave, Suite 101
Phoenix, Arizona 85020

Phone: 602.266.2712
Fax: 602.266.1688

www.ONEarchitecture.us

Principal:

Dustin Curtis

dustin.curtis@onearchitecture.us

Project Manager:

Nathan Bisch

nathan.bisch@onearchitecture.us

Revisions



Burger King

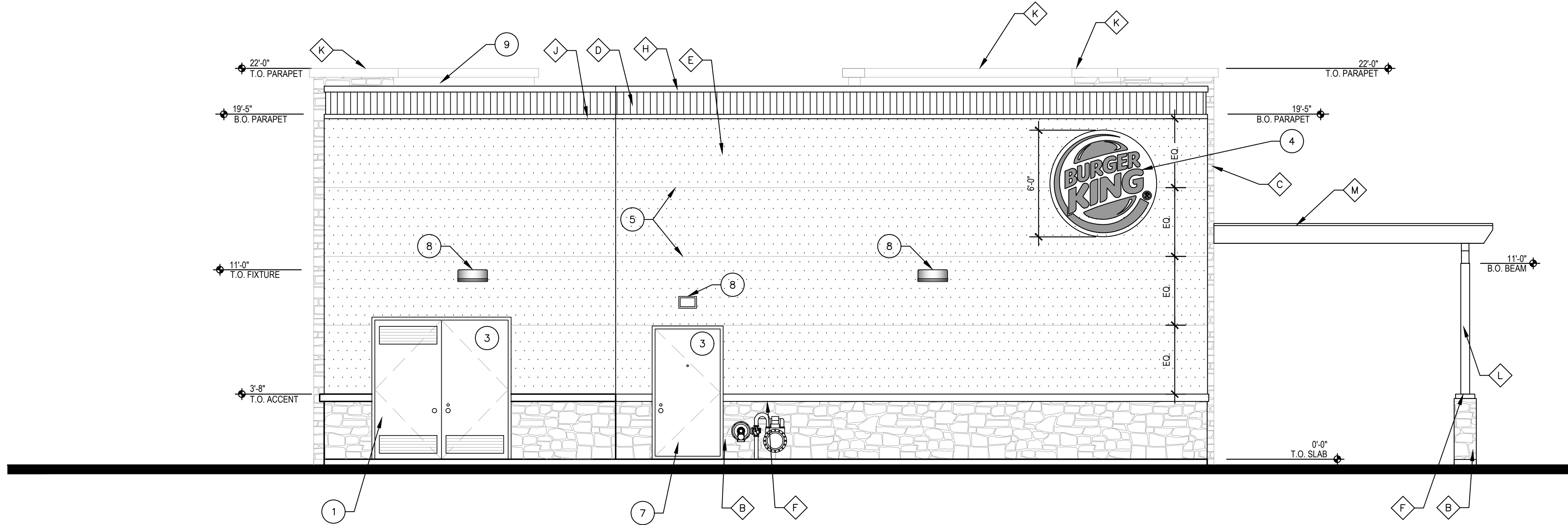
SWC of E. Guadalupe Rd.
& S. Hawes Rd.
Mesa, AZ

1.17.18

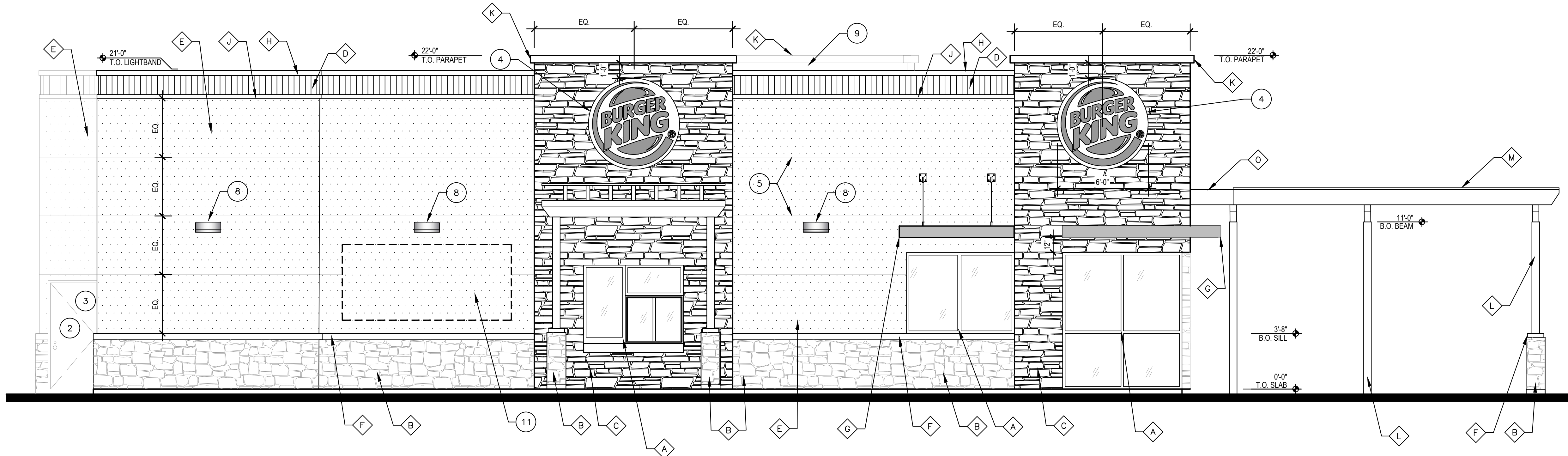
AZ-1698

A4.2

Exterior Elevations



3 West Elevation
1/4" = 1'-0"



4 North Elevation
1/4" = 1'-0"

Finish Legend

A	ALUMINUM STOREFRONT #40 DARK BRONZE - KAWNEER
B	CULTURED STONE VENEER - OWENS CORNING SOUTHERN LEDGESTONE, (W/ GROUTED JOINTS), PATTERN: 2027 'WOLF CREEK'
C	CULTURED STONE VENEER - BORAL COUNTRY LEDGESTONE (W/ GROUTED JOINTS), 'ASPEN'
D	PREFABRICATED PARAPET BAND - CORRUGATED METAL PRE-FINISHED LEKTRON (OR APPROVED EQUAL) 'AMAZING' 04YR 11/537
E	EIFS FIELD STUCCO WITH REVEAL JOINTS AS INDICATED INTERGRAL COLOR / SAND FINISH PPG 'TANNERS TAUPE'
F	STUCCO / STONE ACCENT PAINT- 'MONTEREY CLIFFS' 10YY 14/080
G	SUSPENDED CANOPY / VALENCE - PREMANUF. ALUMINUM CONST. BY APPROVED SUPPLIER W/ CLEAR ALUMINUM FINISH
H	METAL COPING, TOP OF LIGHT BAND WALL CAP. W.P. HICKMAN SYSTEMS (OR EQ.) PERMA SNAP W/ PAINTED FINISH COLOR 'SILVERSMITH'
J	METAL COPING, BOTTOM OF LIGHT BAND, W.P. HICKMAN SYSTEMS (OR EQ.) PERMA SNAP W/ PAINTED FINISH COLOR TO MATCH PPG 'TANNERS TAUPE'
K	METAL COPING, TOP OF ARCHON, W.P. HICKMAN SYSTEMS (OR EQ.) PERMA SNAP W/ PAINTED FINISH COLOR 'SILVERSMITH'
L	6"x8" WOOD COLUMN PAINT TO MATCH- 'MONTEREY CLIFFS'
M	COVERED WOOD CANOPY PAINT TO MATCH - 'MONTEREY CLIFFS'
O	OPEN WOOD TRELLIS PAINT TO MATCH - 'MONTEREY CLIFFS'
P	SUPERLITE INTEGRAL COLOR SPLIT FACE CMU COLOR - '324WR'

Keynotes

- NOT ALL KEYNOTES ARE USED ON THIS SHEET.
- SES ROOM.
 - FIRE RISER ROOM.
 - HOLLOW METAL DOOR AND FRAME, PAINT TO MATCH COLOR 'F', MONTEREY CLIFFS.
 - SIGNAGE TO BE UNDER SEPARATE PERMIT.
 - STUCCO REVEAL, TYPICAL.
 - LOCATION OF KNOX BOX 3200 SERIES RECESSED MOUNTED. VERIFY LOCATION
WITH CITY FIRE DEPARTMENT REQUIREMENTS AND INSTALL SIGNAGE AS REQUIRED.
 - GAS METER LOCATION.
 - LIGHT FIXTURE, TYPICAL.
 - BACK SIDE OF PARAPET WALL, BEYOND.
 - INDICATES ADDRESS NUMBERS LOCATION, HEIGHT AND SIZE. ALL ADDRESS
NUMBERS SHALL BE ON CONTRASTING BACKGROUNDS. NUMBERS SHALL BE 12" HIGH
MINIMUM PER CITY STANDARDS.
 - MERCHANDISING AREA.

General Notes

- A. ALL SIGNAGE SHOWN FOR REFERENCE ONLY. SIGNAGE SHALL BE SUBMITTED
UNDER SEPARATE REVIEW AND APPROVAL.
- B. ALL GROUND AND ROOF MOUNTED EQUIPMENT, INCLUDING UTILITIES SHALL BE
SCREENED FROM VIEW.
- C. ALL EIFS SHALL BE INSTALLED PER MANUFACTURER'S RECOMMENDATIONS AND
ICC-ES REPORT #ESR-1232.



ONE!
ARCHITECTURE

8801 N. Central Ave. Suite 101
Phoenix, Arizona 85020
Phone: 602.266.2712
Fax: 602.266.1688

www.ONEarchitecture.us

Principal:

Dustin Curtis

dustin.curtis@onearchitecture.us

Project Manager:

Nathan Bisch

nathan.bisch@onearchitecture.us

Revisions



Burger King

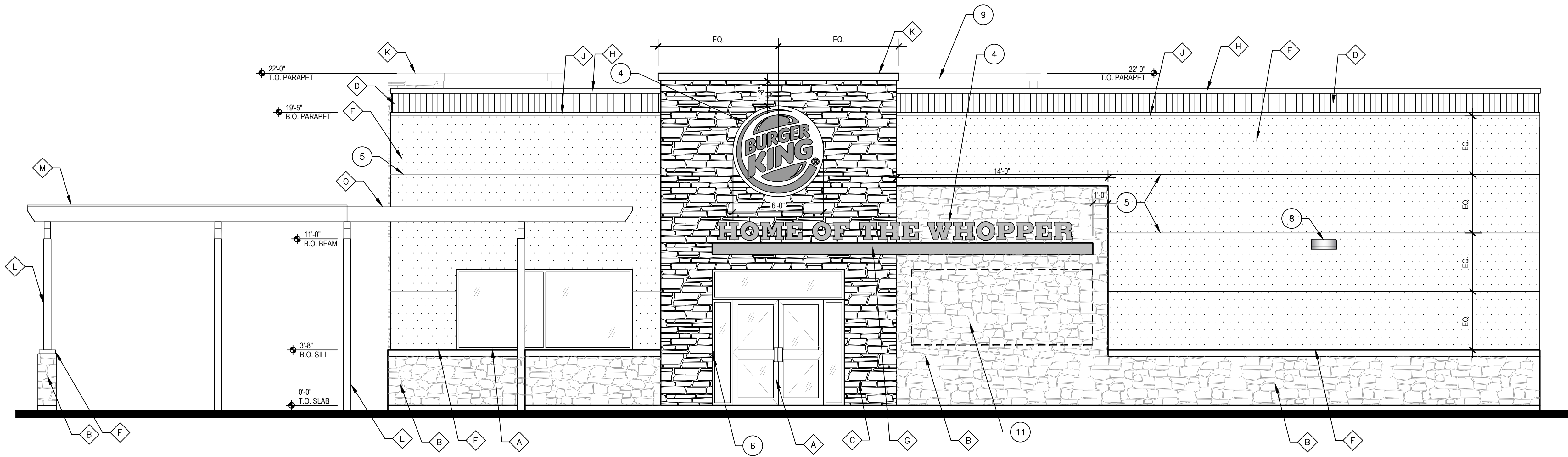
SWC of E. Guadalupe Rd.
& S. Hawes Rd.
Mesa, AZ

3.1.18

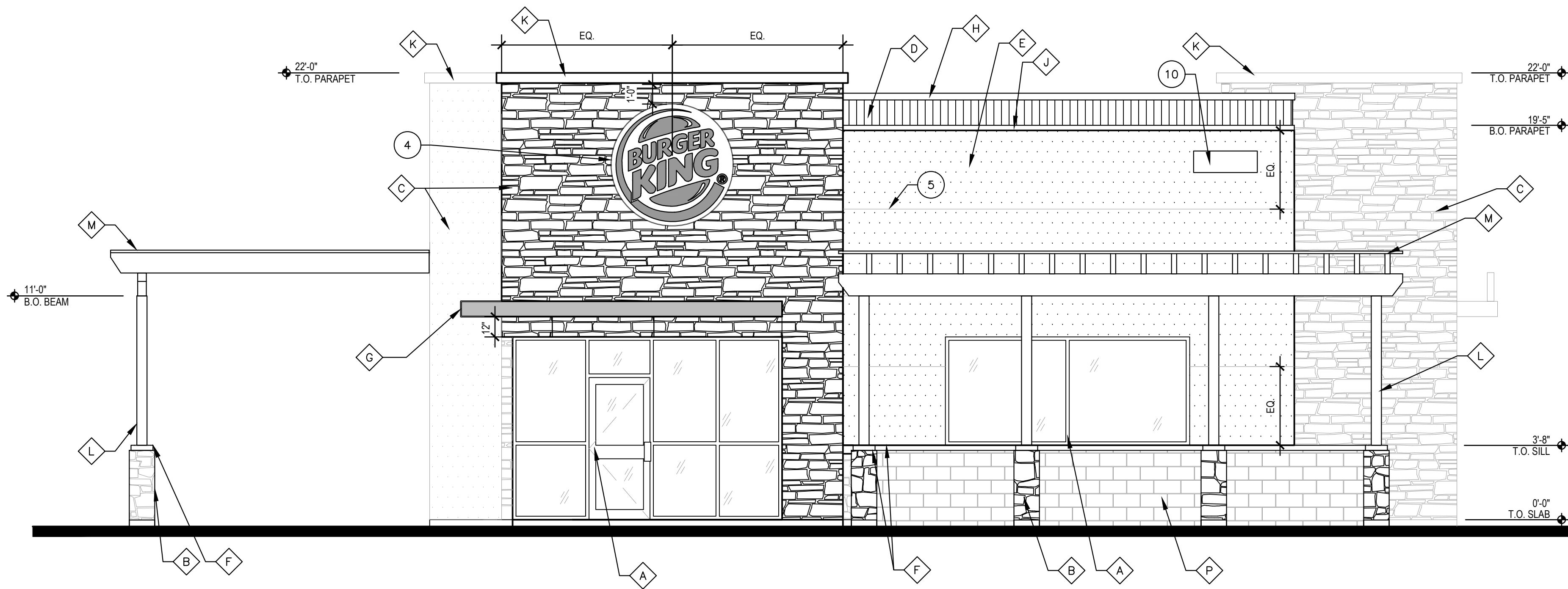
AZ-1698

A4.2

Exterior Elevations



1 **South Elevation**
1/4" = 1'-0"



2 **East Elevation**
1/4" = 1'-0"

Finish Legend

A	ALUMINUM STOREFRONT #40 DARK BRONZE - KAWNEER
B	CULTURED STONE VENEER - OWENS CORNING SOUTHERN LEDGESTONE, (W/ GROUTED JOINTS), PATTERN: 2027 'WOLF CREEK'
C	CULTURED STONE VENEER - BORAL COUNTRY LEDGESTONE (W/ GROUTED JOINTS), 'ASPEN'
D	PREFABRICATED PARAPET BAND - CORRUGATED METAL PRE-FINISHED LEKTRON (OR APPROVED EQUAL) 'AMAZING' 04YR 11/537
E	EIFS FIELD STUCCO WITH REVEAL JOINTS AS INDICATED INTERGRAL COLOR / SAND FINISH PPG 'TANNERS TAUPE'
F	STUCCO / STONE ACCENT PAINT- 'MONTEREY CLIFFS' 10YY 14/080
G	SUSPENDED CANOPY / VALENCE - PREMANUF. ALUMINUM CONST. BY APPROVED SUPPLIER W/ CLEAR ALUMINUM FINISH
H	METAL COPING, TOP OF LIGHT BAND WALL CAP, W.P. HICKMAN SYSTEMS (OR EQ.) PERMA SNAP W/ PAINTED FINISH COLOR 'SILVERSMITH'
J	METAL COPING, BOTTOM OF LIGHT BAND, W.P. HICKMAN SYSTEMS (OR EQ.) PERMA SNAP W/ PAINTED FINISH COLOR TO MATCH PPG 'TANNERS TAUPE'
K	METAL COPING, TOP OF ARCHON, W.P. HICKMAN SYSTEMS (OR EQ.) PERMA SNAP W/ PAINTED FINISH COLOR 'SILVERSMITH'
L	6"x6" WOOD COLUMN PAINT TO MATCH- 'MONTEREY CLIFFS'
M	COVERED WOOD CANOPY PAINT TO MATCH - 'MONTEREY CLIFFS'
O	OPEN WOOD TRELLIS PAINT TO MATCH - 'MONTEREY CLIFFS'
P	SUPERLITE INTEGRAL COLOR SPLIT FACE CMU COLOR - '324WR'

Keynotes

- NOT ALL KEYNOTES ARE USED ON THIS SHEET.
- SES ROOM.
 - FIRE RISER ROOM.
 - HOLLOW METAL DOOR AND FRAME, PAINT TO MATCH COLOR 'F', MONTEREY CLIFFS.
 - SIGNAGE TO BE UNDER SEPARATE PERMIT.
 - EIFS REVEAL, TYPICAL.
 - LOCATION OF KNOX BOX 3200 SERIES RECESSED MOUNTED. VERIFY LOCATION
WITH CITY FIRE DEPARTMENT REQUIREMENTS AND INSTALL SIGNAGE AS REQUIRED.
 - GAS METER LOCATION.
 - LIGHT FIXTURE, TYPICAL.
 - BACK SIDE OF TOWER WALL, BEYOND.
 - INDICATES ADDRESS NUMBERS LOCATION, HEIGHT AND SIZE. ALL ADDRESS
NUMBERS SHALL BE ON CONTRASTING BACKGROUNDS. NUMBERS SHALL BE 12" HIGH
MINIMUM PER CITY STANDARDS.
 - MERCHANDISING AREA.

General Notes

- A. ALL SIGNAGE SHOWN FOR REFERENCE ONLY. SIGNAGE SHALL BE SUBMITTED
UNDER SEPARATE REVIEW AND APPROVAL.
- B. ALL GROUND AND ROOF MOUNTED EQUIPMENT, INCLUDING UTILITIES SHALL BE
SCREENED FROM VIEW.
- C. ALL EIFS SHALL BE INSTALLED PER MANUFACTURER'S RECOMMENDATIONS AND
ICC-ES REPORT #ESR-1232.



ONE!
ARCHITECTURE

8801 N. Central Ave. Suite 101
Phoenix, Arizona 85020
Phone: 602.266.2712
Fax: 602.266.1688
www.ONEarchitecture.us

Principal:
Dustin Curtis
dustin.curtis@onearchitecture.us
Project Manager:
Nathan Bisch
nathan.bisch@onearchitecture.us

Revisions

BURGER KING

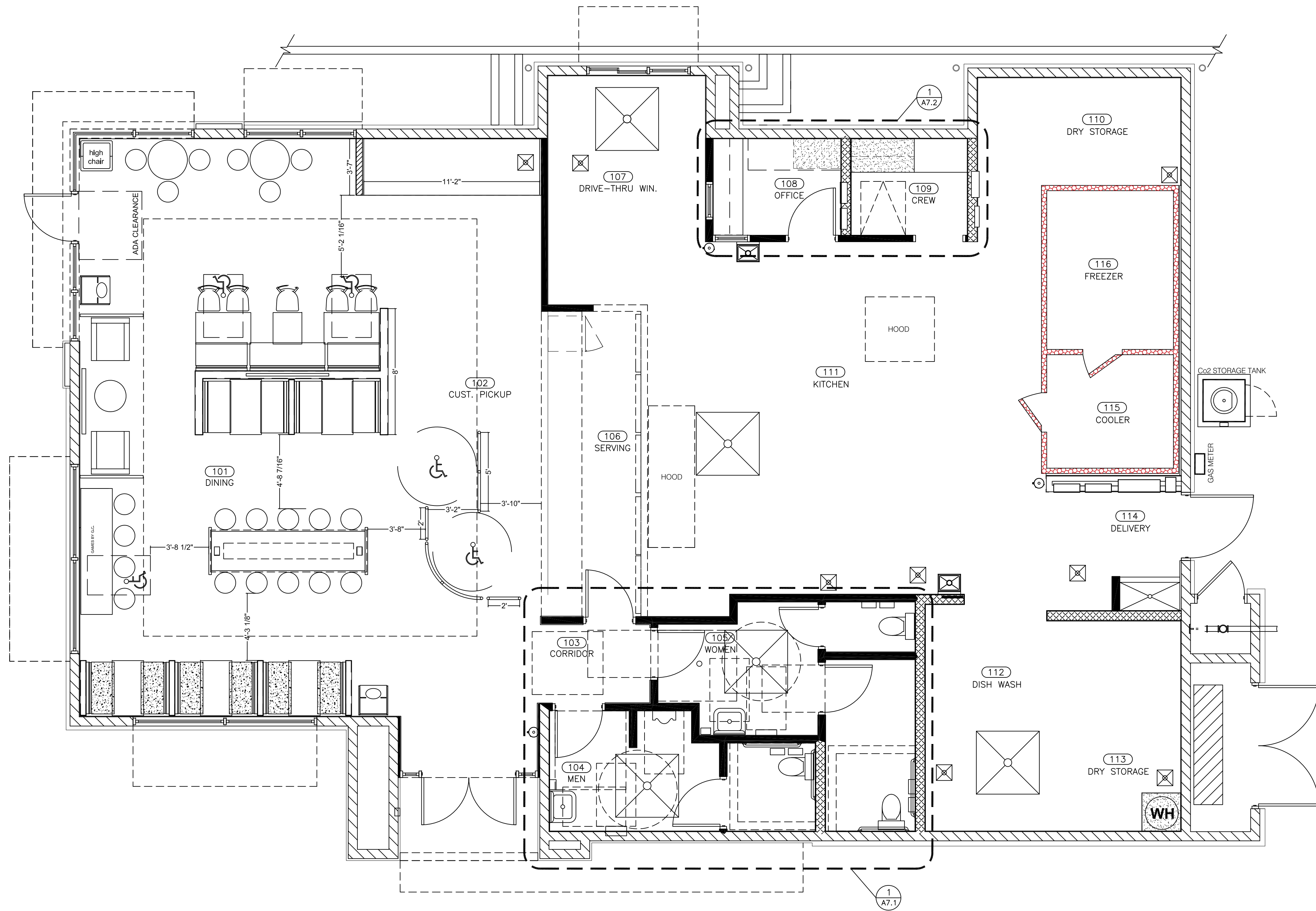
Burger King

SWC of E. Guadalupe Rd.
& S. Hawes Rd.
Mesa, AZ

3.1.18
AZ-1698

A4.1

Exterior Elevations



Floor Plan
1/4" = 1'-0"

Wall Legend

	2X6 WOOD STUD EXTERIOR WALL WITH BATT INSULATION. SEE DET. 2 & 5 ON A9.1	New Walls
	2X4 WOOD STUD INTERIOR WALL WITH BATT INSULATION SEE DET. 6 ON A9.1	
	2X6 WOOD STUD INTERIOR WALL WITH BATT INSULATION. SEE DET. 6 ON A9.1	
	WALK-IN COOLER/FREEZER	

Symbol Legend

ID NAME	ROOM IDENTIFICATION REFER TO DECOR SHEETS FOR FINISH SCHEDULE
------------	--

NOT FOR
CONSTRUCTION

ONE!
ARCHITECTURE

8801 N. Central Ave. Suite 101
Phoenix, Arizona 85020

Phone: 602.266.2712
Fax: 602.266.1688

www.ONEarchitecture.us

Principal:

Dustin Curtis

dustin.curtis@onearchitecture.us

Project Manager:

Nathan Bisch

nathan.bisch@onearchitecture.us

Revisions



Burger King

SWC of E. Guadalupe Rd.
& S. Hawes Rd.
Mesa, AZ

4.5.17

AZ-1698

A2.1

Floor Plan