


LANDSCAPE LEGEND  
& SCHEDULE

BOTANICAL NAME		COMMON NAME	
SYMBOL			
TREES		SIZE	QTY
	FRAXINUS UHEDI SHAMEL ASH	24" BOX	17
	ULMUS PARVIFOLIA EVERGREEN ELM	24" BOX	30
	PHOENIX DACTYLIFERA DATE PALM	18" TALL	2
SHRUBS & ACCENTS		SIZE	QTY
	BOUGAINVILLEA "BARBARA KARST" BUSH BOUGAINVILLEA	5 GAL.	18
	LEUCOPHYLLUM FRUTESCENS GREEN CLOUD SAGE	5 GAL.	47
	RUELLIA PENINSULARIS BAJA RUELLIA	5 GAL.	55
	RHAPIOLEPIS INDICA VAR. "BALLERINA" INDIAN HAWTHORN VAR. BALLERINA	5 GAL.	22
ACCENTS		SIZE	QTY
	AGAVE VILMORINIANA OCTOPUS AGAVE	5 GAL.	28
	HESPERALOE PARVIFOLIA RED YUCCA	5 GAL.	15
GROUND COVER		SIZE	QTY
	LANTANA X "NEW GOLD" NEW GOLD LANTANA	1 GAL.	73
	LANTANA MONTIVEDENSIS PURPLE TRAILING LANTANA	1 GAL.	29
TOP DRESSING		QTY	
	DECOMPOSED GRANITE : 17,141 S.F.		
	1/2" SCREENED DESERT GOLD TO MATCH EXISTING COMMUNITY PROVIDE SAMPLES FOR APPROVAL 2" MIN DEPTH		

LANDSCAPE CALC'S

FRONT STREET RIGHT OF WAY AREAS	
1 TREE, 4 SHRUBS PER 25 L.F.	
REQUIRED: (250 L.F. / 25)(1)(4)	
= 10 TREES, 40 SHRUBS	
PROVIDED: 10 TREES, 40 SHRUBS	
SIDE AND REAR PERIMETER LANDSCAPE	
3 TREE & 20 SHRUBS PER 100 L.F.	
REQUIRED: (690 L.F. / 100)(3)(20)	
= 21 TREES, 130 SHRUBS	
PROVIDED: 21 TREES, 130 SHRUBS	

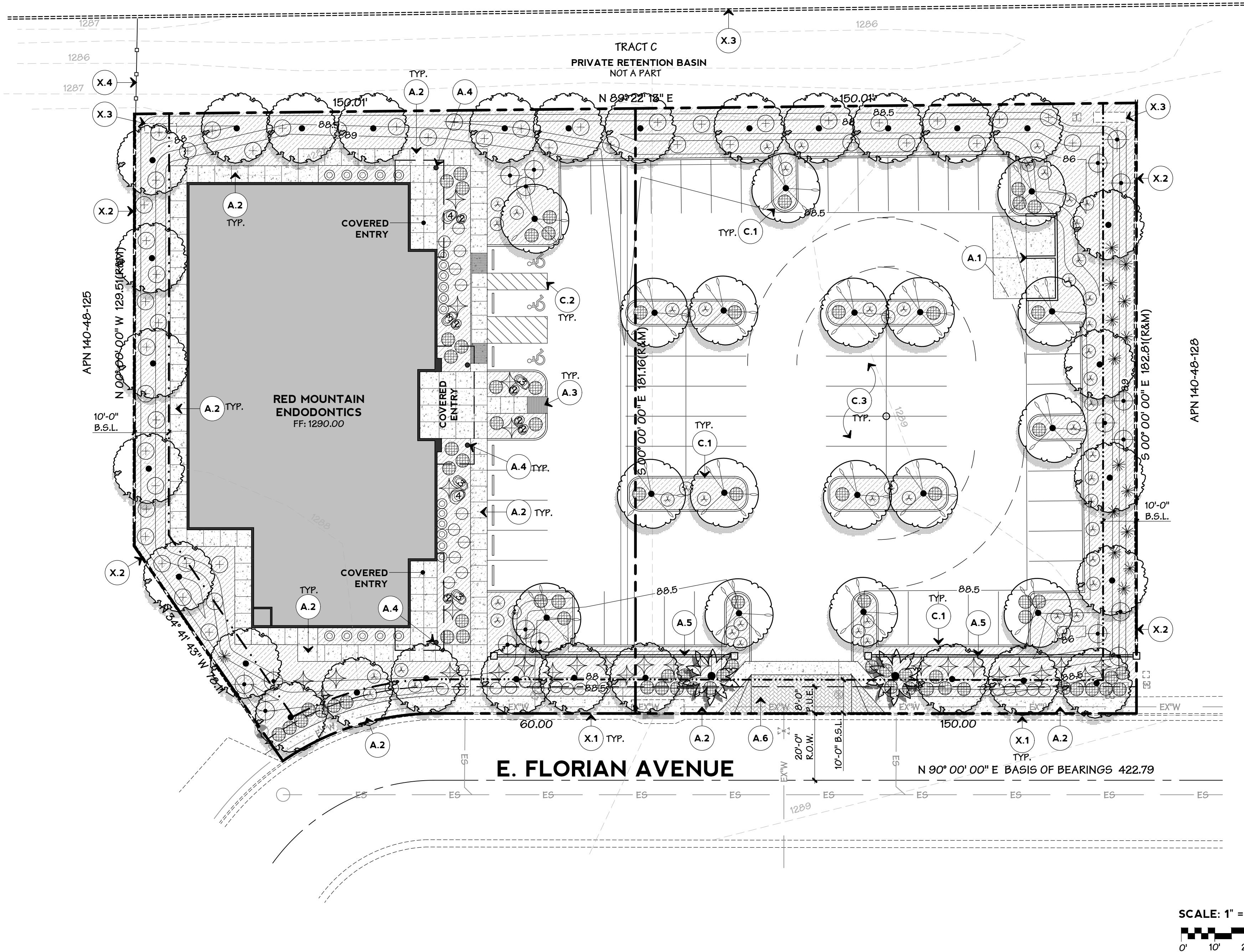
SITE DATA

ZONING:	OC
GROSS SITE AREA:	58,811 S.F. (1.35 AC)
NET SITE AREA:	53,760 S.F. (1.23 AC)
TOTAL LANDSCAPE AREA:	17,141 S.F. (31.8%)



MICHAEL A. HALL ARCHITECT, LLC  
600 NORTH 4TH STREET, SUITE 404  
PHOENIX, ARIZONA 85004  
PHONE: 602-258-6048 FAX: 602-254-1802

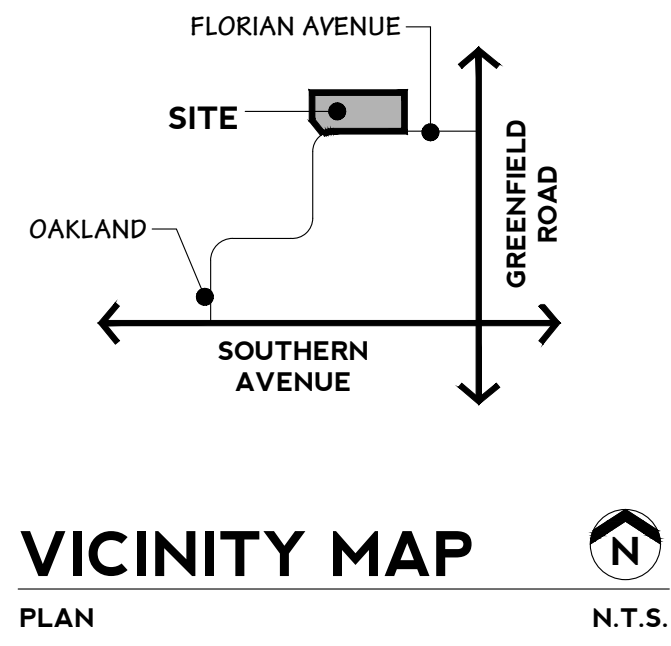
RED MOUNTAIN  
ENDODONTICS  
4332 E. FLORIAN AVENUE  
MESA, ARIZONA



REVISIONS:	
SHEET TITLE:	
PRELIMINARY LANDSCAPE PLAN	
DATE:	ISSUED FOR:
3/6/18	P42, DRB

SHEET  
L1

NOT  
USED



PROJECT TEAM

ARCHITECT  
MICHAEL A. HALL ARCHITECT, LLC  
600 N. 4TH STREET, SUITE 404  
PHOENIX, AZ 85004  
P: (602) 258-6048  
CONTACT: MICHAEL A. HALL, RA  
EMAIL: MIKE@MICHAELAHALLARCHITECTLLC.COM

LANDSCAPE ARCHITECT  
THOMAS + CROWLEY LLC  
126 E. CONSTITUTION COURT  
GILBERT, AZ 85296  
P: (480) 878-4708  
CONTACT: CRAIG CROWLEY, RLA  
EMAIL: CRAIG@THOMAS-CROWLEY.COM

CIVIL ENGINEER  
GARNER GROUP ENGINEERING  
2064 E. NORCROFT STREET  
MESA, AZ 85215  
PH: (480) 292-2673  
CONTACT: CLINT GARNER  
EMAIL: CLINT@GARNERGROUPAZ.COM

LEGEND

---	PROPERTY LINE / RIGHT OF WAY LINE
---	EASEMENT LINE
---	SETBACK LINE
---	EXISTING CONTOUR LINE
---	PROPOSED CONTOUR LINE

KEYED NOTES

X.X EXISTING	C.X CIVIL IMPROVEMENTS
X.1 EXISTING STREET CURB, DO NOT DISTURB	C.1 CURB, SEE CIVIL PLANS
X.2 EXISTING WALL, DO NOT DISTURB	C.2 HANDICAP STRIPING, SEE CIVIL PLANS
X.3 EXISTING CONCRETE, DO NOT DISTURB	C.3 PARKING LOT STRIPING SEE CIVIL PLANS
X.4 EXISTING FENCE, DO NOT DISTURB	
A.X ARCHITECTURE IMPROVEMENTS	
A.1 TRASH ENCLOSURE, SEE PLANS BY ARCHITECT	
A.2 SIDEWALK, SEE PLANS BY ARCHITECT	
A.3 RAMP, SEE PLANS BY ARCHITECT	
A.4 BUILDING COLUMN, SEE PLANS BY ARCHITECT	
A.5 SCREEN WALL, SEE PLANS BY ARCHITECT	
A.6 NEW DRIVEWAY WITH STAMPED CONCRETE SEE PLANS BY ARCHITECT	

ANY CONTRACTOR, SUB-CONTRACTOR, AND/OR SUPPLIER IS HEREBY NOTIFIED THAT THIS PROJECT (CONTRACT FOR CONSTRUCTION) MUST COMPLY TO THE ARIZONA SENATE BILL SB1549, PROMPT PAYMENT LEGISLATION, AS IT MODIFIES THE ARIZONA REVISED STATUTES.

THOMAS + CROWLEY  
LANDSCAPE ARCHITECTURE 1150 N. COUNTRY CLUB DRIVE, #11  
PLANNING MESA, AZ 85201  
+ SITE DESIGN PH: 480.378.4708  
+ CONSTRUCTION MANAGEMENT WWW.THOMAS-CROWLEY.COM