

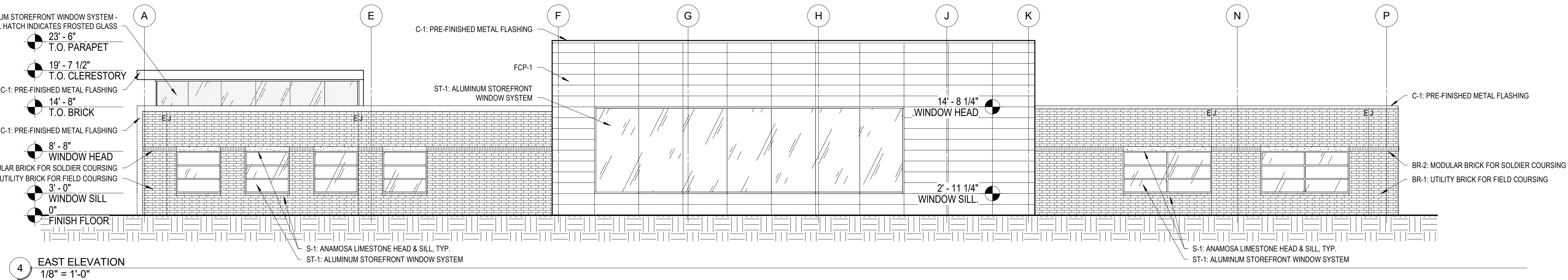
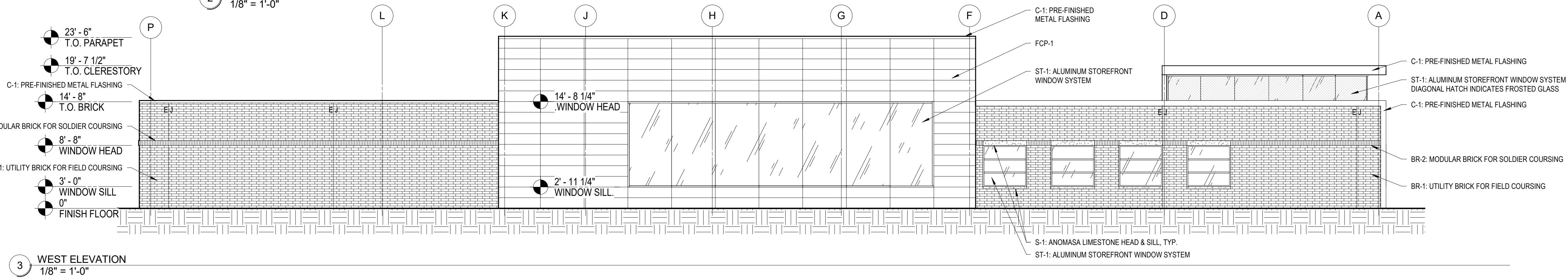
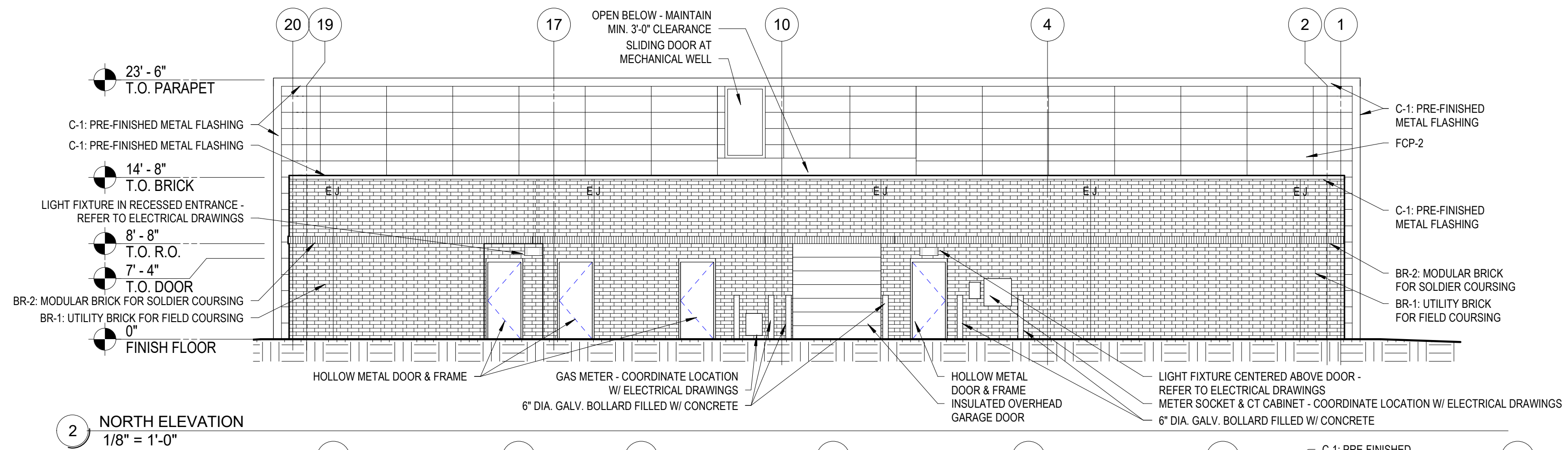
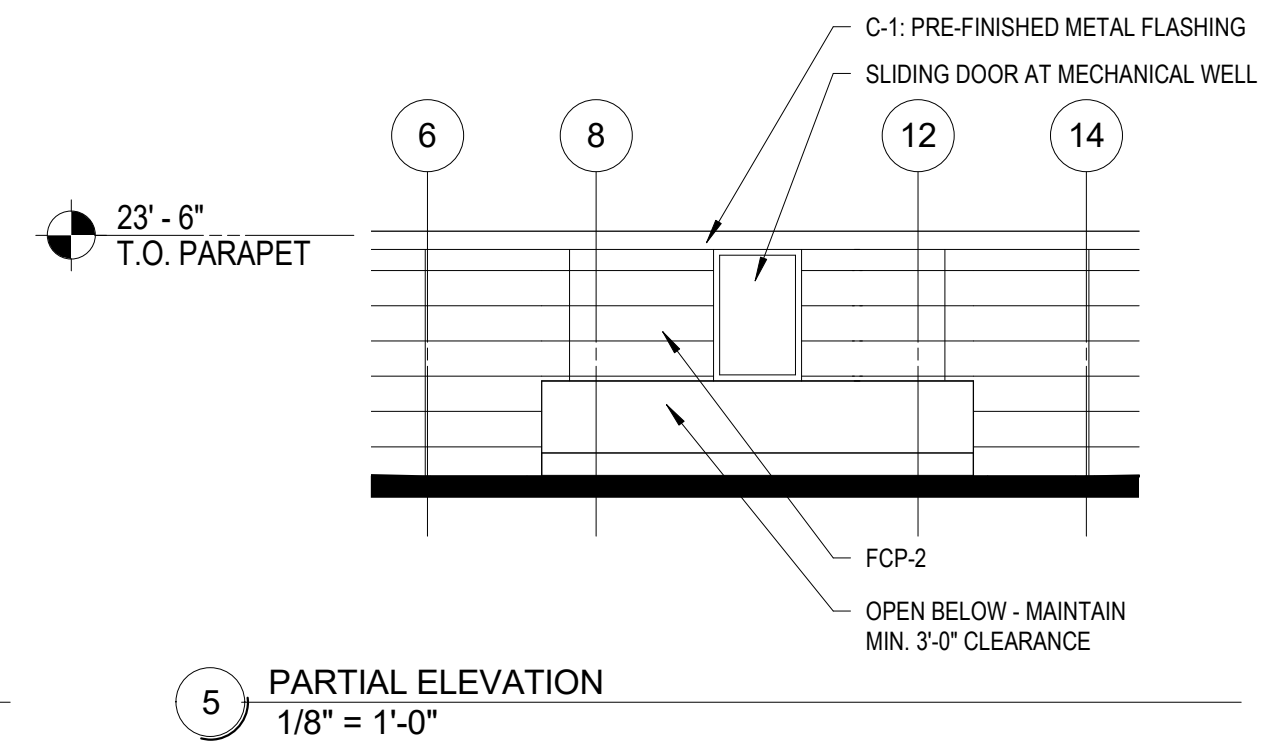
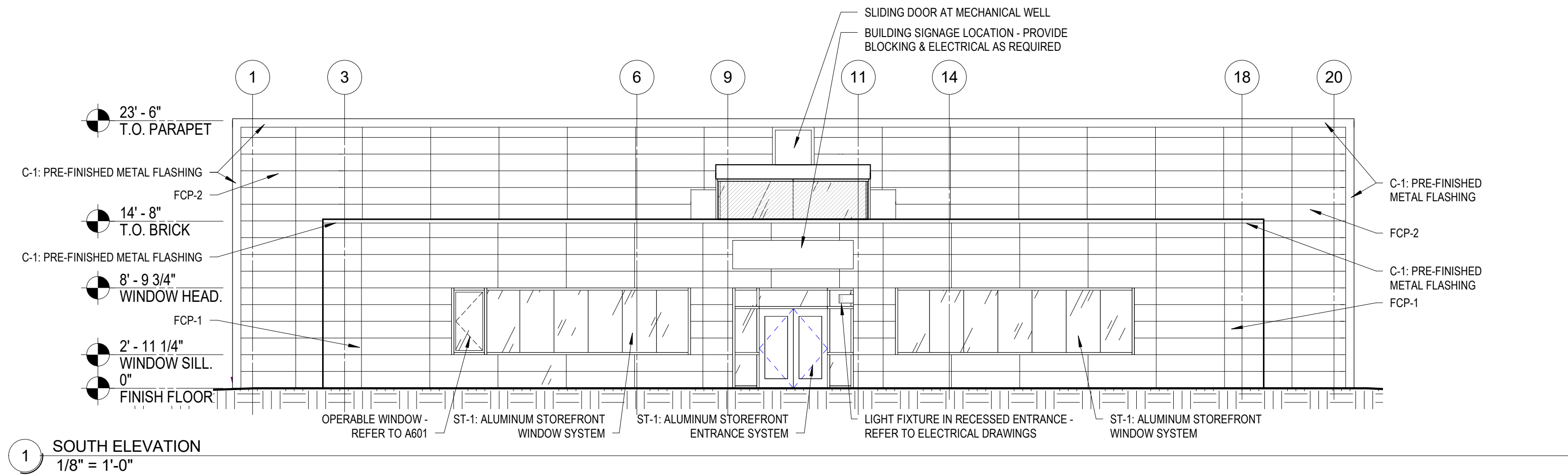
EXTERIOR ELEVATIONS
GENERAL NOTES:

1. EXPOSED GAS PIPING OR ELECTRICAL CABINET TO BE PAINTED COBBLE BROWN.
2. BRICK CONTROL JOINT LOCATIONS TO USE CAULK SE-1. REFER TO EXTERIOR ELEVATION FINISHES SCHEDULE.
3. ALL EXTERIOR LINTELS ABOVE DOORS AND WINDOWS TO BE GALVANIZED STEEL - DO NOT PAINT.

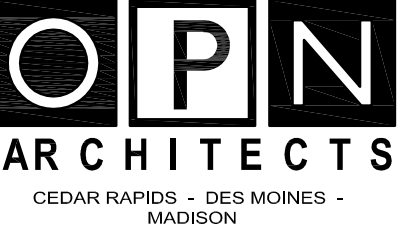
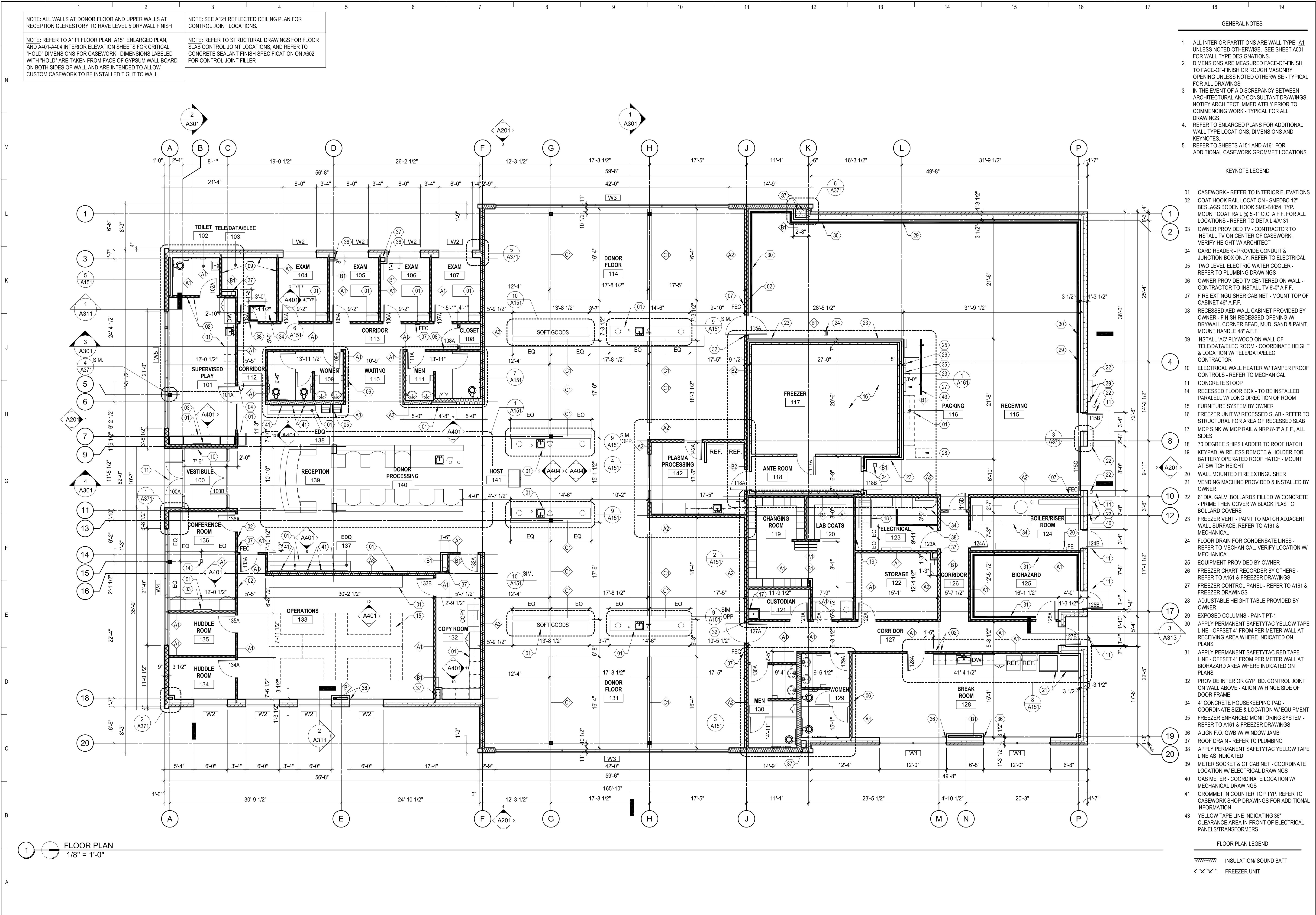
EXTERIOR FINISHES
SCHEDULE:

BR-1: UTILITY BRICK COLOR: SMOKEY MOUNTAIN MANUFACTURER: INTERSTATE BRICK
BR-2: MODULAR BRICK COLOR: SMOKEY MOUNTAIN MANUFACTURER: INTERSTATE BRICK
C-1: PREFINISHED METAL FLASHING COLOR: GRAY TYPE: .040 ALUMINUM
FCP-1: FIBER CENTENT PANEL SYSTEM COLOR: COORDINATE W/ ARCHITECT
FCP-2: FIBER CENTENT PANEL SYSTEM COLOR: COORDINATE W/ ARCHITECT
PT-1: FIELD PAINT COLOR: COBBLE BROWN MANUFACTURER: SHERWIN WILLIAMS ORDER #: SW6062
SE-1: EXTERIOR CAULK COLOR: BASF-BROWN -200U IRV/10 MANUFACTURER: SONNEBORNE
S-1: ANOMOSA LIMESTONE VENEER FINISH: VEIN CUT, MACHINE SMOOTH MANUFACTURER: WEBER STONE CO. PHONE: (319) 462-3581
ST-1: ALUMINUM STOREFRONT WINDOW SYSTEM FINISH: CLEAR ANODIZED

NOTE: GAS METER ASSEMBLY/PIPING AND ELECTRICAL METER SOCKET/CABINET TO BE PAINTED COBBLE BROWN. PT-1 - REFER TO A201 EXTERIOR FINISHES SCHEDULE







OPN ARCHITECTS
200 5TH AVENUE SE SUITE 201
CEDAR RAPIDS, IA 52401
319-363-6018 PHONE
319-363-7349 FAX
www.opnarchitects.com
opn@opnarchitects.com

All reports, plans, specifications, computer files, field data, notes and other documents and instruments prepared by OPN Architects, Inc. as instruments of service shall remain the property of OPN Architects, Inc. OPN Architects, Inc. shall retain all common law, statutory and other reserved rights, including the copyright thereto.

© 2017 OPN Architects, Inc.

Owner / General Contractor

Build to Suit
INCORPORATED

Project
BIO-LIFE PLASMA SERVICES CENTER

MESA, AZ

Sheet Issue Date
CD SET XX/XX/18

Previous Issue Dates

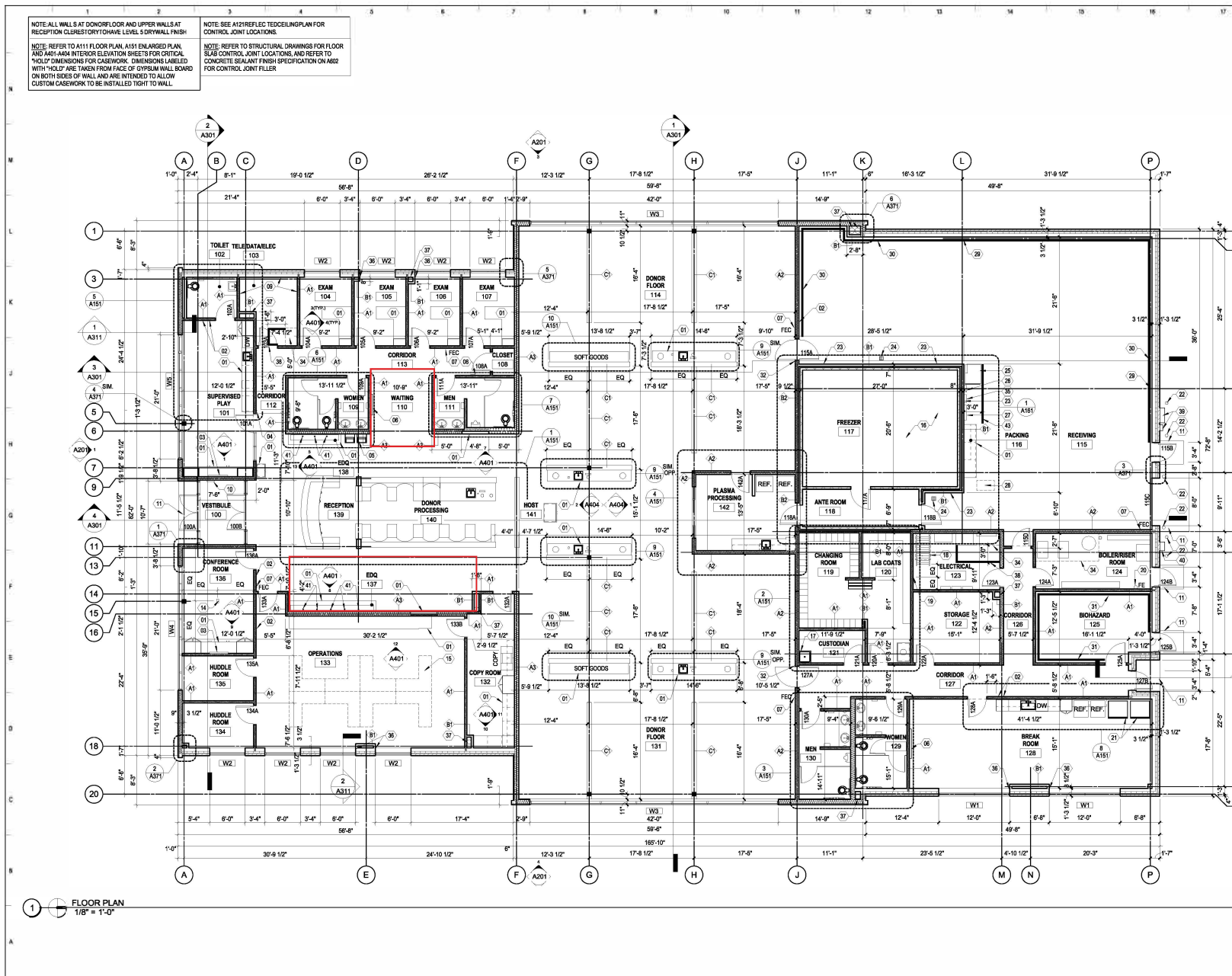
Revision Dates

CONSTRUCTION SET

Drawing
FLOOR PLAN

OPN Project No. 17285000

A111



GENERAL NOTES

- ALL INTERIOR PARTITIONS ARE WALL TYPE A1 UNLESS NOTED OTHERWISE. SEE SHEET A001 FOR WALL TYPE A1 BOLD BOLD.
- DIMENSIONS ARE MEASURED FACE-OF-FINISH TOP-OF-FINISH OR ROUGH MASONRY OPENING UNLESS NOTED OTHERWISE. TYPICAL FOR ALL DRAWINGS.
- IN THE EVENT OF A DISCREPANCY BETWEEN ARCHITECTURAL AND CONSULTANT DRAWINGS, NOTIFY ARCHITECT IMMEDIATELY PRIOR TO COMMENCING WORK - TYPICAL FOR ALL DRAWINGS.
- REFER TO ENLARGED PLANS FOR ADDITIONAL WALL TYPE LOCATION, DIMENSIONS AND KEYNOTES.
- REFER TO SHEETS A151 AND A151FOR ADDITIONAL CASEWORK OR METAL LOCATION S.

KEYNOTE LEGEND

- CASEWORK - REFER TO INTERIOR ELEVATIONS
- COAT HOOK RAIL LOCATION - 3/4" X 12" BEELAS BODEN RAIL (SHEETS A151, TYP. MOUNT COAT RAIL @ 5'-11" O.C. A.F.F. FOR ALL LOCATIONS - REFER TO DETAIL A4131)
- OWNER PROVIDED TV CENTER ON WALL - CONTRACTOR TO INSTALL TV CENTER OF CASEWORK. VERIFY HEIGHT WITH ARCHITECT
- CARDREADER, PROXIMITY CARD, AND JUNCTION BOX ONLY. REFER TO ELECTRICAL
- TWO LEVEL ELECTRIC WATER COOLER - REFER TO PLUMBING DRAWINGS
- OWNER PROVIDED TV CENTER ON WALL - CONTRACTOR TO INSTALL TV @ 5'-2" A.F.F.
- FIRE EXTINGUISHER CABINET - MOUNT TOP OF CABINET 48" A.F.F.
- RECESSED ADD WALL CABINET PROVIDED BY OWNER - FINISH RECESSED OPERATION IN DRYWALL CORNER BEAD, MUD, SAND & PAINT. MOUNT HANDLE 48" A.F.F.
- INSTALL "AC" PLYWOOD DRYWALL TELEVISION RAIL ROOM - COORDINATE HEIGHT & LOCATION WITH TELEVISION RAIL CONTRACTOR
- ELECTRICAL WALL HEATER W/ TAMPER PROOF CONTROL - REFER TO MECHANICAL CONCRETE STOP
- RECEIVED LOCK BOX - TO BE INSTALLED PARALLEL WITH LONG DIRECTION OFFICE FURNITURE SYSTEM BY OWNER
- FREESTAND UNIT W/ RECESSED SLAB - REFER TO STRUCTURAL FOR AREA OF RECESSED SLAB
- MOP SINK W/ MOPRAL & WRP 2" A.F.F. ALL SIDES
- 70 DEGREE SHIP'S LADDER TROOP HATCH KEYPAD WIRELESS REMOTE & HOLDER FOR BATTERY OPERATED DOOR HATCH - MOUNT AT SW CORNER
- WALL MOUNTED FIRE EXTINGUISHER
- VENTILATION MACHINE PROVIDED & INSTALLED BY OWNER
- 6" DIA. GALLY BOLLARDS FILLED W/ CONCRETE - PRIME THEM CORNER WITH BLACK PLASTIC BOLLARD CAPS
- FREESTAND UNIT - PAINT TO MATCH ADJACENT WALL SURFACE. REFER TO A151 & MECHANICAL
- FLOOR DRAIN FOR CONDENSATE DRAINAGE - REFER TO MECHANICAL, VERIFY LOCATION WITH MECHANICAL
- EQUIPMENT PROVIDED BY OWNER
- FREESTAND UNIT RECESSED OPERATION - REFER TO A151 & FREESTAND DRAWING
- FREESTAND UNIT PANEL - REFER TO A151 & FREESTAND DRAWING
- ADJUST TABLE HEIGHT TABLE PROVIDED BY OWNER
- EXPOSED COLUMN - PAINT PT-1
- APPLY PERMANENT SAFETY TAPE YELLOW TAPE LINE - OFFSET 4" FROM PERIMETER WALL AT BIOHAZARD AREA WHERE INDICATED ON PLANS
- APPLY PERMANENT SAFETY TAPE RED TAPE LINE - OFFSET 4" FROM PERIMETER WALL AT BIOHAZARD AREA WHERE INDICATED ON PLANS
- PROVIDE THERMOP. BC CONTROL JOINT ON WALL ABOVE - ALLOW WITH HINGE SIDE OF DOOR FRAME
- 4" CONCRETE HOUSEKEEPING PAD - COORDINATE SIZE & LOCATION WITH EQUIPMENT
- FREESTAND UNIT MONITORING SYSTEM - REFER TO A151 & FREESTAND DRAWING
- ALUM. O.D. CHD W/ WINDOW LAMINATE
- ROOF DRAIN - REFER TO PLUMBING
- METER SCHEDULE & CT CABINET - COORDINATE LOCATION WITH ELECTRICAL DRAWINGS
- ON SINK TIER - COORDINATE LOCATION WITH MECHANICAL DRAWINGS
- GROUT IN COUNTER TOP TYP. REFER TO CASEWORK SHOP DRAWINGS FOR ADDITIONAL INFORMATION
- YELLOW TAPE LINE INDICATING 3" CLEARANCE AREA WITHIN OF ELECTRICAL PANELS/TRANSFORMERS

FLOOR PLAN LEGEND

INSULATION SOUND BATT

FREEZER UNIT

FLOOR PLAN

1/8" = 1'-0"

OPN ARCHITECTS

200 5TH AVENUE, SUITE 201
CHICAGO, ILLINOIS 60601
312-363-8018 PHONE
312-363-7448 FAX
www.opnarchitects.com
opn@opnarchitects.com

OPN ARCHITECTS

200 5TH AVENUE, SUITE 201
CHICAGO, ILLINOIS 60601
312-363-8018 PHONE
312-363-7448 FAX
www.opnarchitects.com
opn@opnarchitects.com

Build to Suit

BIO-LIFE PLASMA SERVICES CENTER

MESA, AZ

CONSTRUCTION SET

FLOOR PLAN

A111





PLEASE RESERVE
THESE CHAIRS FOR
NEW DONORS.
THANK YOU!

PLEASE RESERVE
THESE CHAIRS FOR
NEW DONORS.
THANK YOU!

PLEASE RESERVE
THESE CHAIRS FOR
NEW DONORS.
THANK YOU!



