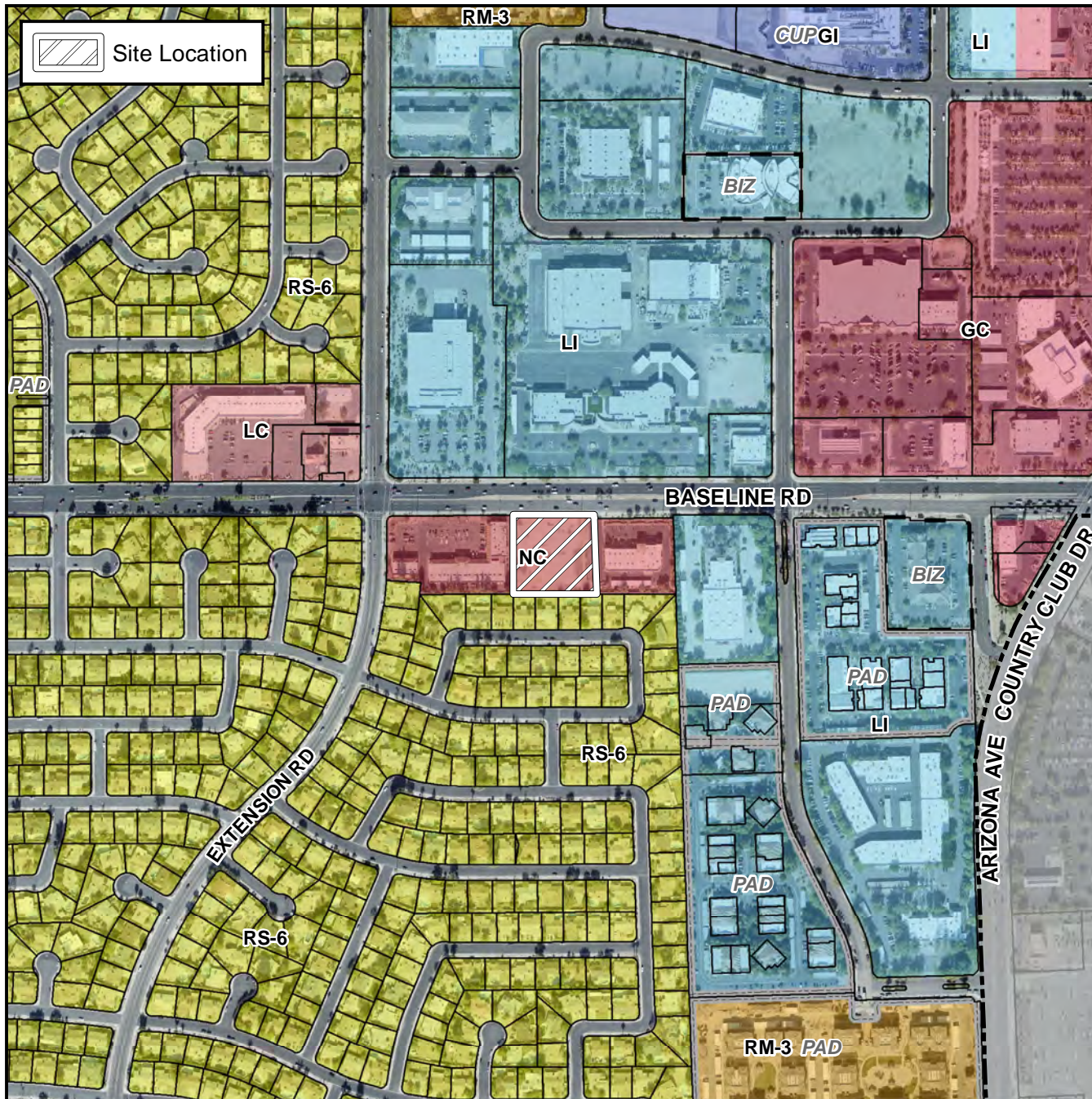


Planning and Zoning Vicinity Map: ZON17-00585



Case Details

CASE:

PRE-PLAT : ☐

ZON17-00585

SITE / ADDRESS:

The 700 block of West Baseline Road (south side). Located on the south side of Baseline Road west of Country Club Drive. (1.9± acres). - District 3

REQUEST:

Site Plan Modification. This request will allow for the development of a medical office in the NC zoning district.

