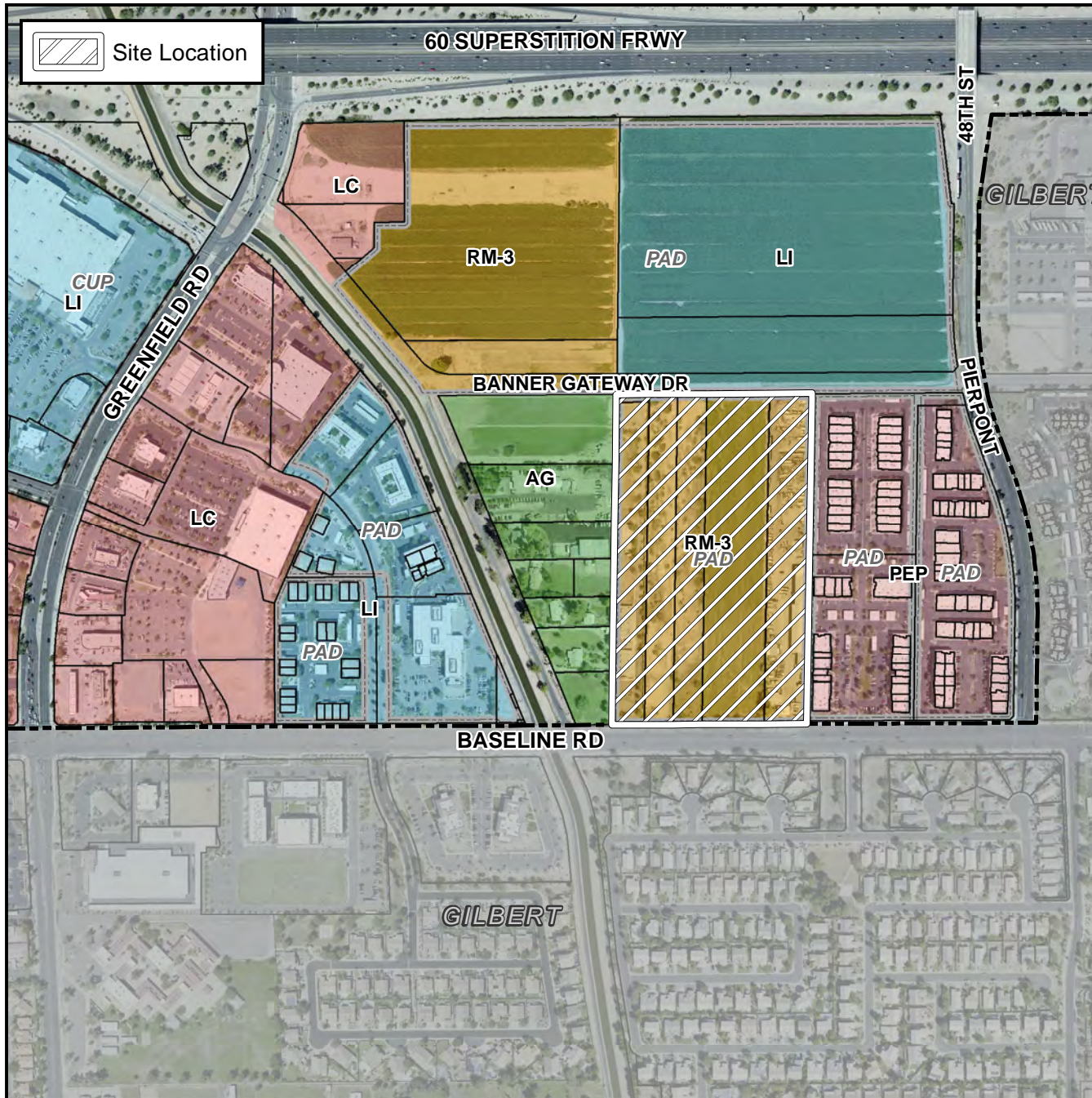


Planning and Zoning Vicinity Map: ZON17-00581



Case Details

CASE:

PRE-PLAT : ☐

ZON17-00581

SITE / ADDRESS:

District 2. The 4700 through 4800 blocks of East Baseline Road (north side). Located east of Greenfield Road on the north side of Baseline Road. (21.8± acres)

REQUEST:

PAD Modification. This request will allow for modifications to an approved PAD for a multi-residence development in the RM-3-PAD zoning district.

