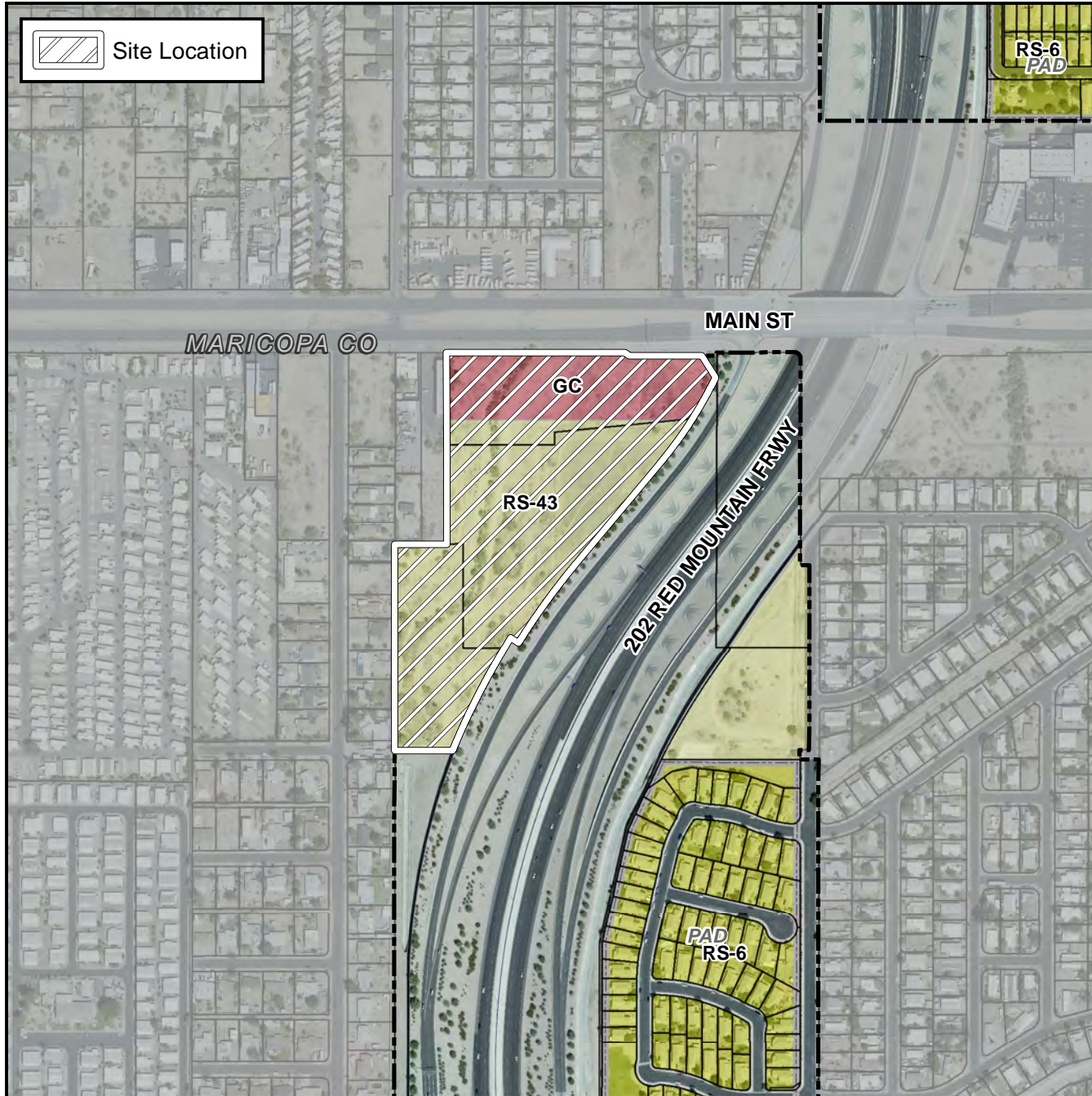


Planning and Zoning Vicinity Map: ZON17-00323

Case Details



CASE:

PRE-PLAT : ☐

ZON17-00323

SITE / ADDRESS:

The 8800 to 8900 blocks of East Main Street (south side). Located west of Red Mountain Freeway on the south side of Main Street. (16.4± acres) - District 5

REQUEST:

Rezoning from RS-43 and GC to GC-PAD; and Site Plan Review. This request will allow for the development of an RV dealership and storage facility.

