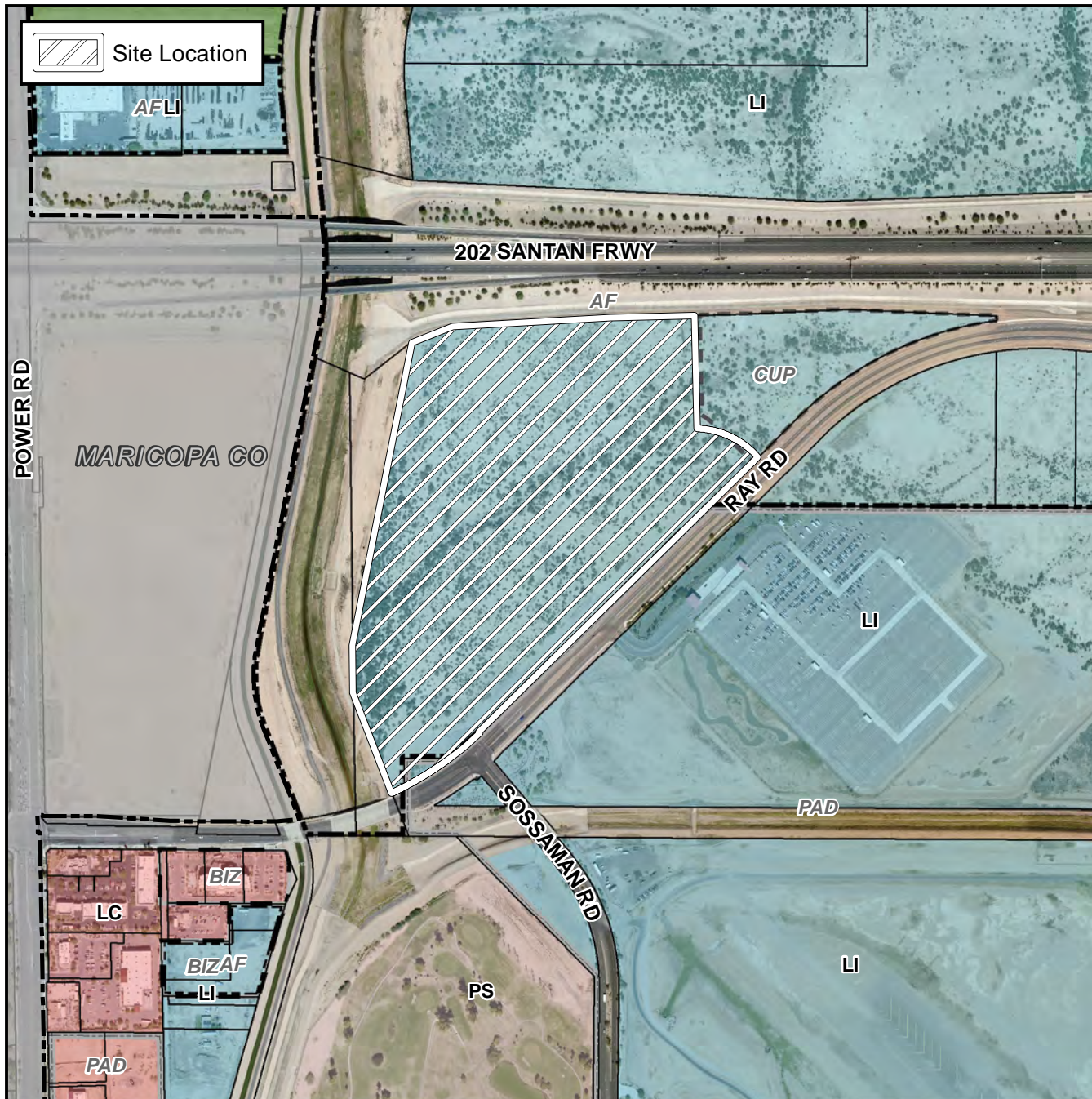


# Planning and Zoning Vicinity Map: ZON17-00283



## Case Details

**CASE:**

**PRE-PLAT :** ☒

ZON17-00283

**SITE / ADDRESS:**

The 7100 to 7300 blocks of East Ray Road (north side). Located east of Power Road on the north side of Ray Road. (56.0± acres) - District 6

**REQUEST:**

Rezone from LI-AF to LI-AF-PAD. This request will allow for the development of an industrial subdivision.

