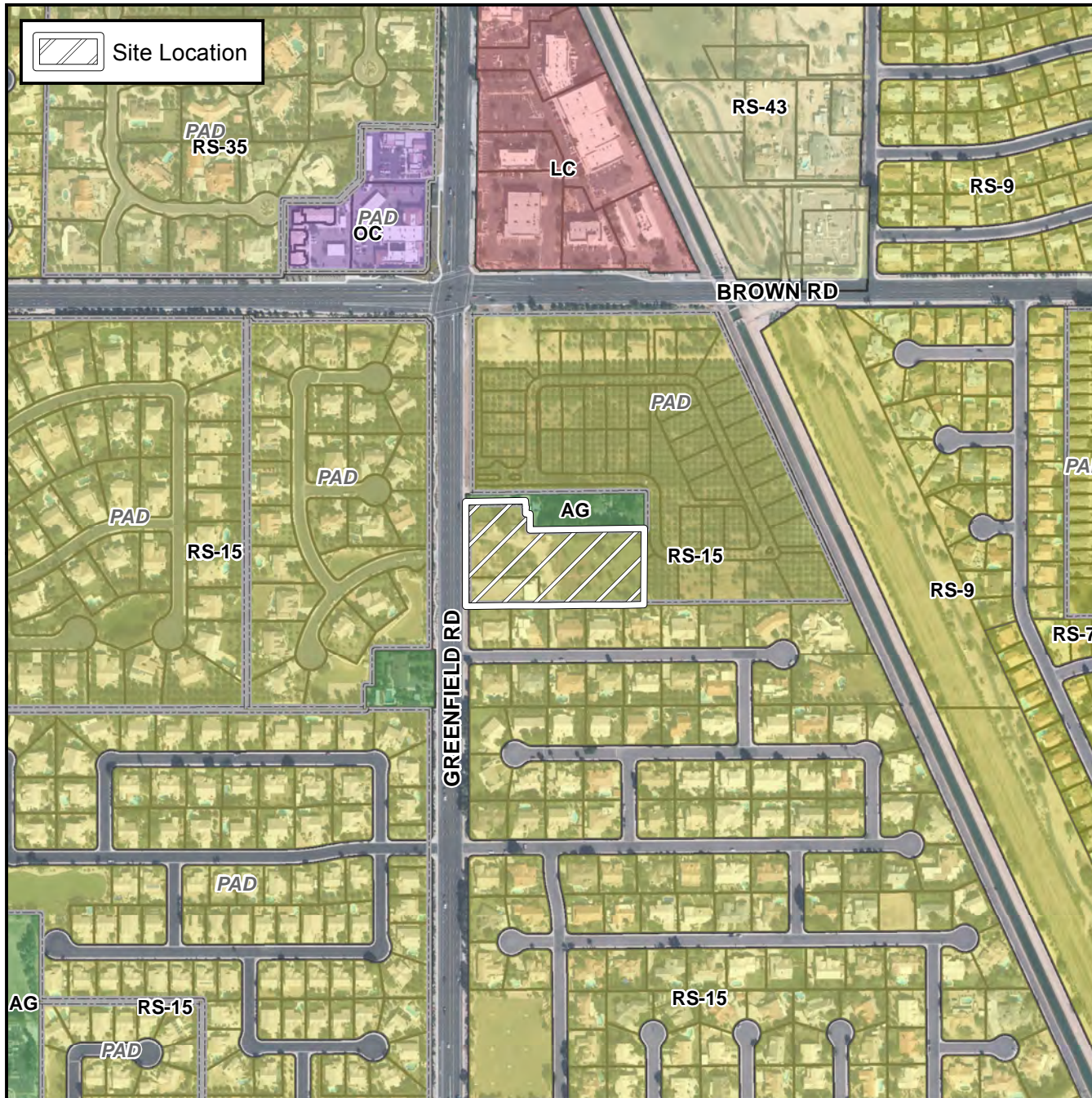


Final Plat Vicinity Map



Case Details

Project:

Estates at Valencia South

Language:

"Estates at Valencia South". (District 2). The 1000 block of North Greenfield Road (east side). Located south of the southeast corner of Greenfield and Brown Roads. 10 RS-15-PAD single residence lots. (3.59 ± acres). McDowell Citrus 100, Inc., Developer; Gregory L. Allen, Allen Consulting Engineers, Inc, Engineer.

