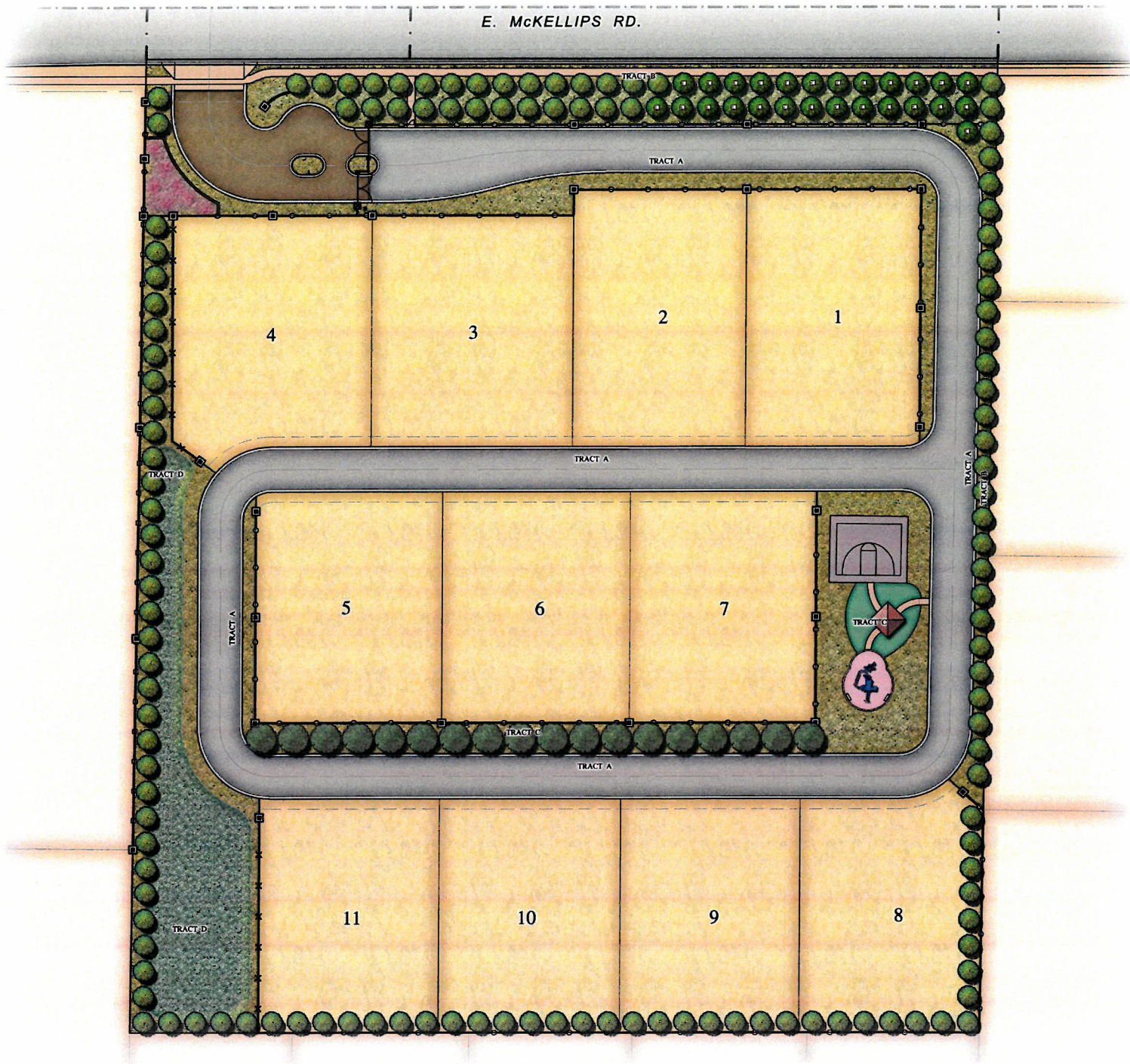



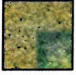


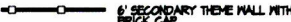






CONCEPT PLAN



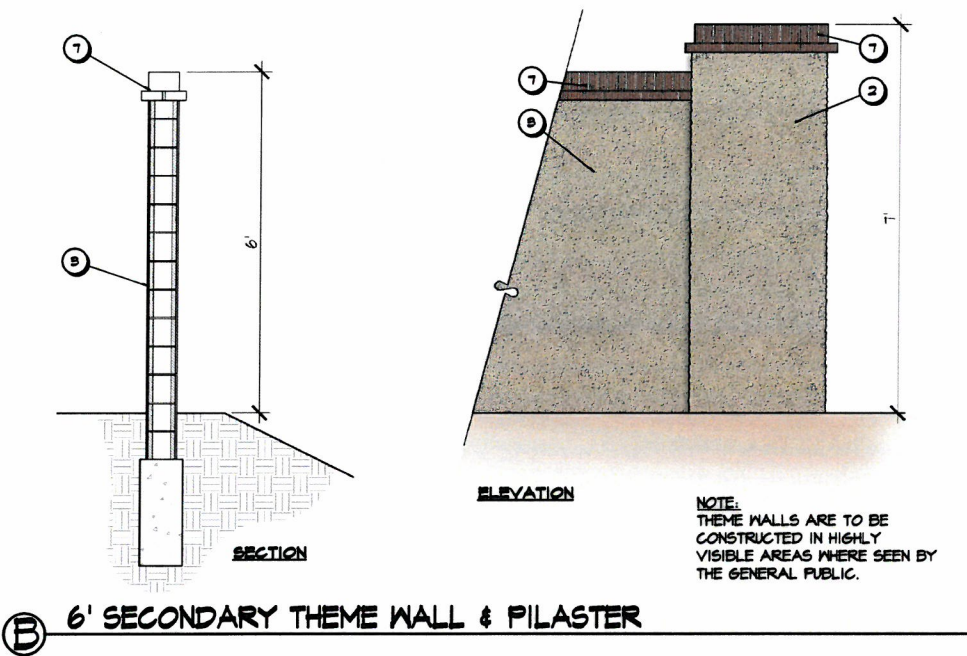
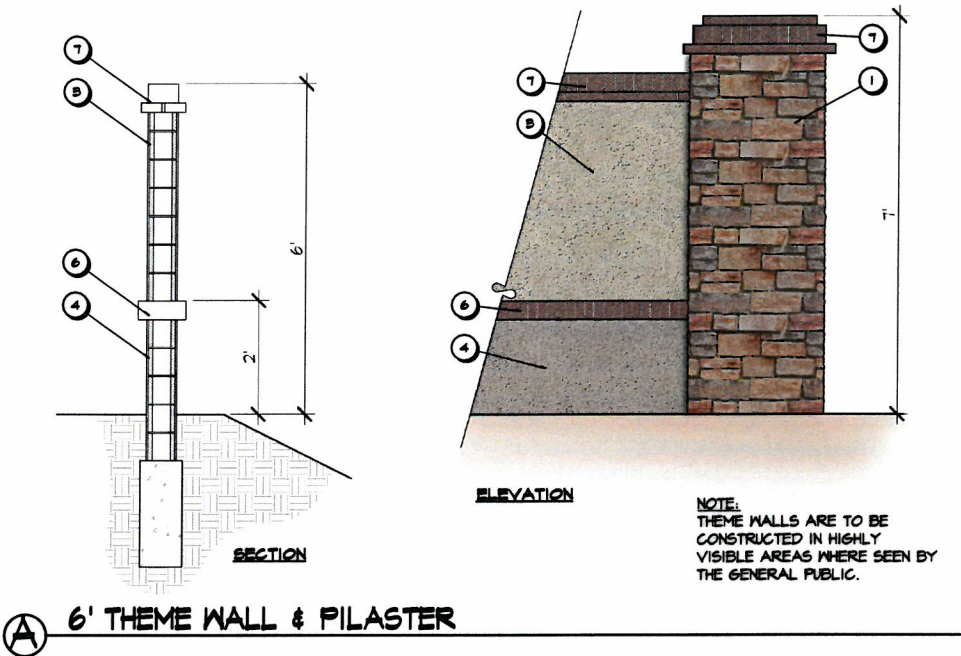
PLANT LEGEND		
TREES		
BOTANICAL NAME	COMMON NAME	SIZE
 PARKINSONIA FLORIDA	BLUE PALO VERDE	24" BOX
	EXISTING CITRUS TREE SHALL BE PROTECTED IN PLACE.	
	CITRUS SPECIES (TO MATCH EXISTING SPECIES)	
		24" BOX
SHRUBS		
BOTANICAL NAME	COMMON NAME	SIZE
 BOUSAINVILLEA ROSENKA'	PINK SHRUB BOUSAINVILLEA	5 GAL.
CAESALPINIA PULCHERRIMA	RED BIRD OF PARADISE	5 GAL.
CASSIA ARTEMISIOIDES	FEATHERY CASSIA	5 GAL.
DASYLIRION WHEELERI	DESERT SPOON	5 GAL.
ENCELIA FARINOSA	BRITTLEBUSH	5 GAL.
EREMOPHILA MACULATA	VALENTINE BUSH	5 GAL.
FOURQUERIA SPLENDENS	OCOTILLO	5 GAL.
LANTANA 'GOLD MOUND'	YELLOW LANTANA	1 GAL.
LEUCOPHYLLUM FRUTESCENS	TEXAS SAGE	5 GAL.
SUCCULENTS		
BOTANICAL NAME	COMMON NAME	SIZE
AGAVE VILMORINIANA	OCTOPUS AGAVE	15 GAL.
FEROCACTUS	BARREL CACTUS	15 GAL.
HEPERALOE PARVIFLORA	RED YUCCA	1 GAL.
OPUNTIA PHAECANTHA	PRICKLY PEAR	5 GAL.
VINES		
BOTANICAL NAME	COMMON NAME	SIZE
MACADYTERA UNSUS-CATI	CAT CLAM VINE	5 GAL.
GROUND COVER		
BOTANICAL NAME	COMMON NAME	SIZE
 TURF (ANNUAL RYE IN WINTER/ COMMON BERMUDA IN SUMMER)	LOTUS MULTIFLORUM/ CYNODON DACTYLON	500

FENCE & WALL LEGEND		
SYMBOL	DESCRIPTION	DETAIL
	6' TYPICAL WALL WITH BRICK GAP	'A'
	6' SECONDARY TYPICAL WALL WITH BRICK GAP	'B'
	6' VIM WALL/FENCE	'C'
	STONE CLAD PILASTER	'A'
	ENTRY MONUMENT	'E'
	CONCRETE MON CURB	

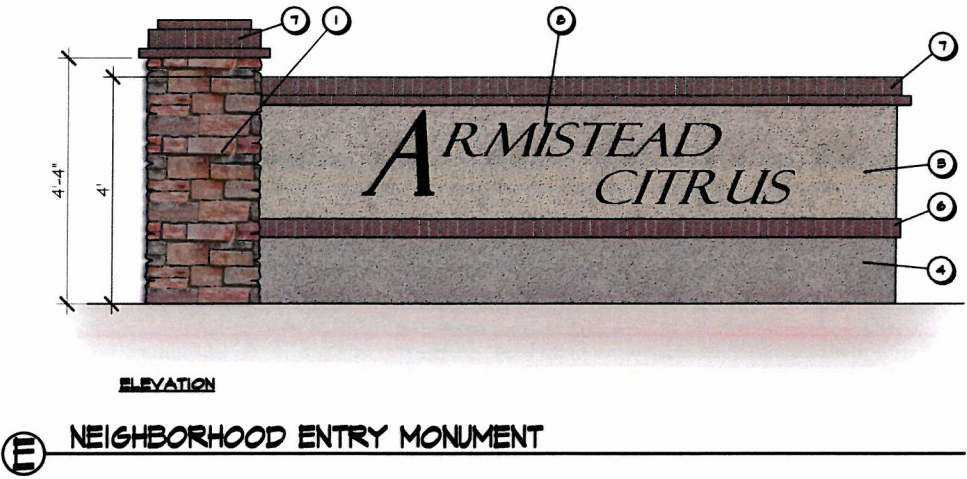
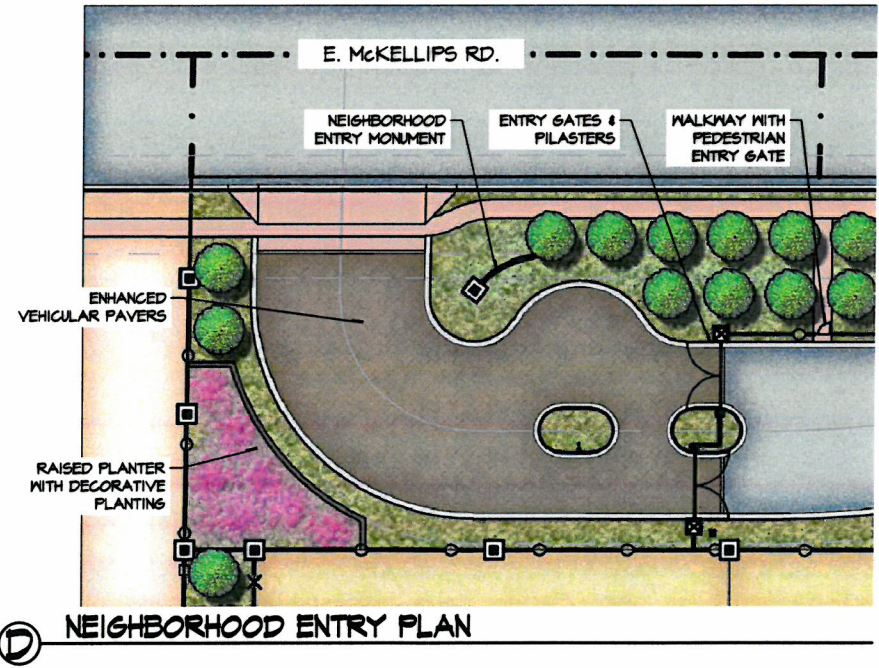
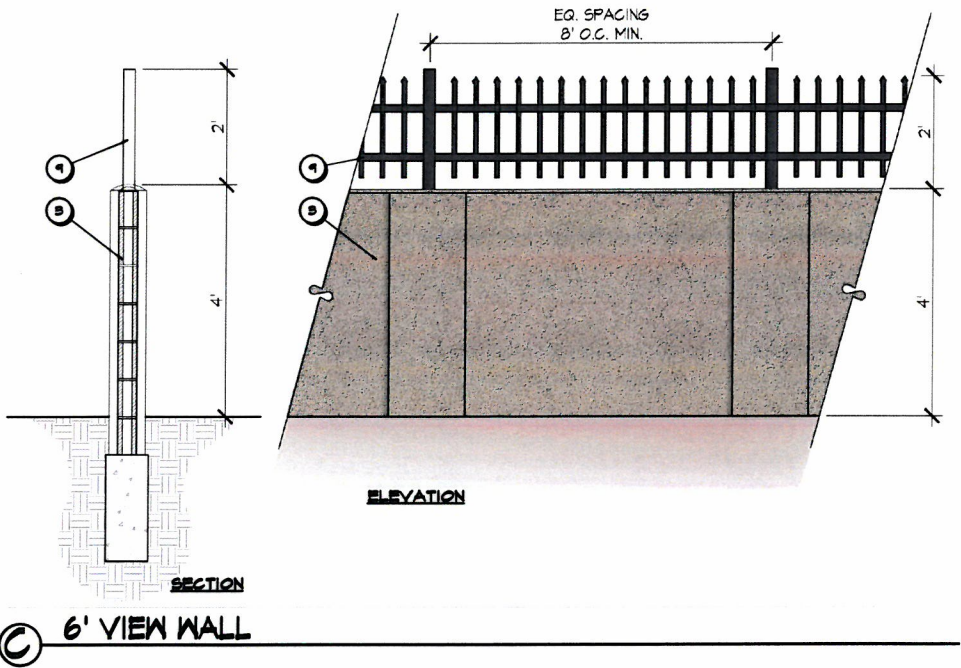
Note:
Plant palettes have been established for the types and categories of landscapes. Though the plant palettes are extensive enough to accommodate varying site conditions and allow design flexibility, it is the intent that the palette be simple and understated consistent with the existing desert landscape. Therefore only a few species may be specified from within the conceptual legend. Alternate species may be selected with City of Mesa approval. Salvage plant material shall be specified and indicated on landscape construction documents.



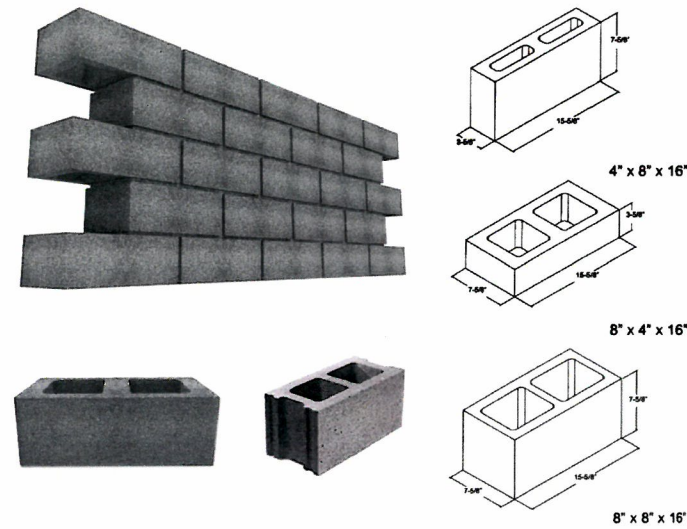
WALLS & NEIGHBORHOOD ENTRY



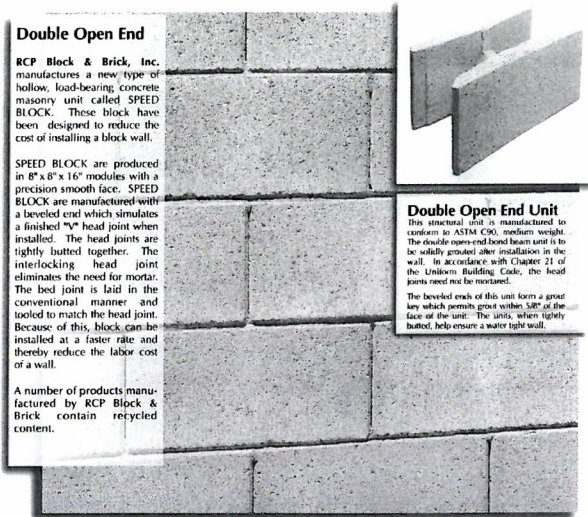
- CONSTRUCTION LEGEND**
- 1 PRECISION BLOCK STONE VENEER THEME PILASTER. LOCATION TO BE SHOWN ON LANDSCAPE CONSTRUCTION PLANS. STONE TO BE 'HILLSTONE- VERANO' BY ELDORADO STONE
 - 2 PRECISION BLOCK SECONDARY THEME PILASTER. 8"x8"x16" WITH RANDOM TEXTURED STUCCO FINISH. COLOR TO BE '236 ANTIQUE GREEN'
 - 3 PRECISION BLOCK WALL, 8"x8"x16" WITH RANDOM TEXTURED STUCCO FINISH. COLOR TO BE '236 ANTIQUE GREEN'
 - 4 PRECISION BLOCK WALL, 8"x8"x16" WITH RANDOM TEXTURED STUCCO FINISH. COLOR TO BE '404 BARN SWALLOW' BY OMEGA
 - 5 PRECISION BLOCK STONE VENEER MONUMENT WALL. LOCATION TO BE SHOWN ON LANDSCAPE CONSTRUCTION PLANS. STONE TO BE 'HILLSTONE- VERANO' BY ELDORADO STONE
 - 6 BRICK ROLLOCK HEADER
 - 7 STACKED BRICK WALL & PILASTER CAP
 - 8 COR-TEN STEEL LETTERING
 - 9 2" H IRON FENCING



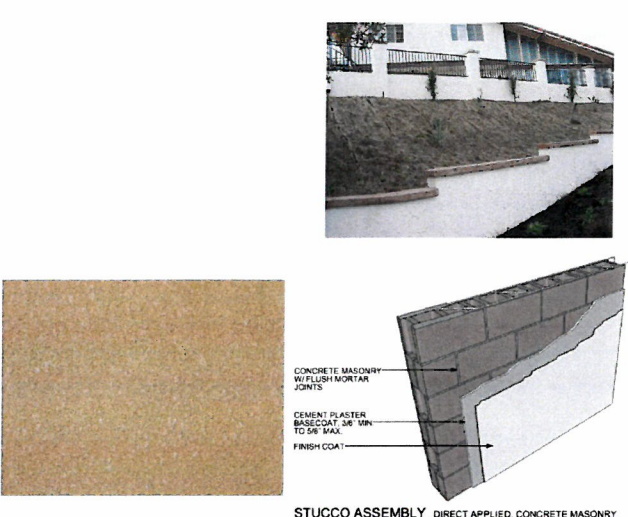
MATERIALS



A CMU PRECISION BLOCK



B DOUBLE OPEN END UNIT BLOCK



C STUCCO FINISH



D EL DORADO STONE VENEER



E ENHANCED VEHICULAR PAVERS