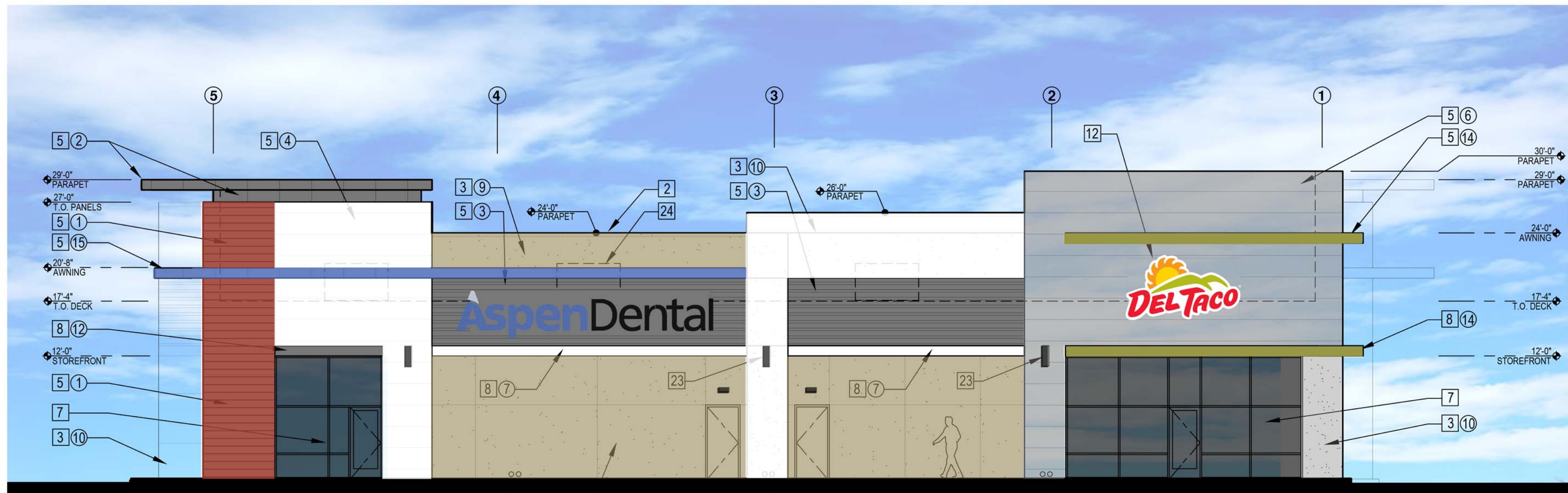
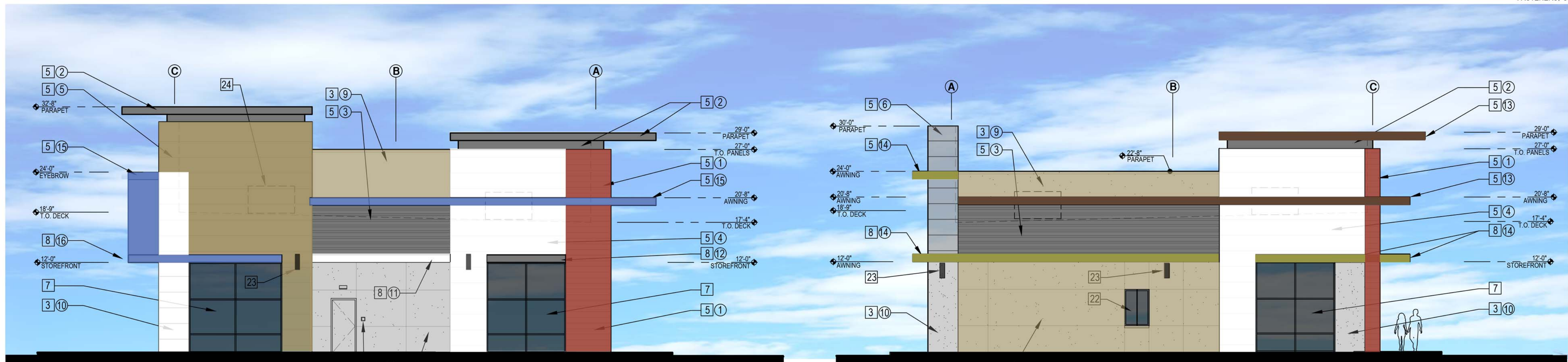


1 EAST ELEVATION
1/8" = 1'-0"



2 WEST ELEVATION
1/8" = 1'-0"



3 NORTH ELEVATION
1/8" = 1'-0"

4 SOUTH ELEVATION
1/8" = 1'-0"

ELEVATION NOTES

- 1 ASPHALT PAVING OVER COMPACTED A.B. - SEE CIVIL PLANS.
- 2 24 GA. METAL COPING - PAINT TO MATCH ADJACENT STUCCO PANEL.
- 3 8" SMOOTH FACED CMU WALL WITH PAINTED STUCCO FINISH AND PERFORATED MTL. 'J' CASING BEAD.
- 4 STUCCO FINISH WITH PERFORATED MTL. 'J' CASING BEAD OVER EXT. GYP. SHEATHING ON WOOD FRAMING.
- 5 KOVACH METAL PANEL SYSTEM SECURED TO SUBSTRATE. SEE ELEVATIONS FOR COLORS AND PANEL TYPE.
- 6 NOT USED.
- 7 ALUM. STOREFRONT SYSTEM W/ 1" INSULATED GLAZING. CLEAR ANODIZED FINISH.
- 8 PAINTED MTL. CANOPY W/ PERFORATED MTL. DECKING.
- 9 EXTEND FOAM ROOF COATING FULL HEIGHT OF PARAPET WALL.
- 10 1" FOAM ROOF (R-10 MIN.) OVER PLYWD. DECKING ON WOOD JOISTS. INSTALL R-30 BATT INSULATION TO BOTTOM OF DECK.
- 11 2" CONTINUOUS SOFFIT VENT.
- 12 PROVIDE POWER FOR BACK LIT ILLUMINATED BOX SIGN - UNDER SEPARATE PERMIT. SEE ELECT. DWGS.
- 13 SURFACE MOUNTED LIGHT FIXTURE - SEE ELECTRICAL DWGS.
- 14 RECESSED CAN LIGHT FIXTURE - SEE ELECTRICAL DWGS.
- 15 ROOF DRAIN AND OVERFLOW TO 'COWS TONGUE' DOWNSPOUT AT WALL FACE.
- 16 6" CONCRETE CURB W/ 1" CHAMFERED EDGES AND 4" DOWELS INTO CONC. SLAB.
- 17 4" CONCRETE SIDEWALK OVER 4" COMPACTED AB. PROVIDE TOOLED JOINTS W/ FILLER AND MEDIUM BROOM FINISH.
- 18 4" CONC. SLAB OVER 4" COMPACTED AB.
- 19 STEEL BEAM - SEE STRUCT. DWGS.
- 20 CONCRETE FOOTING - SEE STRUCT. DWGS.
- 21 ROOF ACCESS HATCH AND 'LADDER UP' SAFETY POST.
- 22 SLIDING DRIVE-THRU WINDOW - SEE WINDOW SCHEDULE.
- 23 SURFACE MOUNTED DECORATIVE LIGHT FIXTURE
- 24 FUTURE ROOFTOP HVAC UNIT - PROVIDE STRUCTURAL BRACING AT FUTURE OPENINGS. SEE STRUCT. DWGS.
- 25 BIKE RACK - SEE SITE PLAN & DETAILS.
- 26 FIRE DEPARTMENT CONNECTION & RISER- SEE CIVIL DWGS.
- 27 FIRE DEPT. 'KNOX BOX' PER CITY OF PHOENIX REQUIREMENTS.

MATERIALS & COLORS:

- 1 KOVACH ALUMINUM COMPOSITE PANEL WITH CONCEALED FASTENERS, FINISH TO MATCH SW 0057 'CHINESE RED'
- 2 KOVACH ALUMINUM COMPOSITE PANEL WITH CONCEALED FASTENERS, 'CHARCOAL' FINISH.
- 3 KOVACH RMP7236 RIB PANEL, 'CHARCOAL' FINISH.
- 4 KOVACH ALUMINUM COMPOSITE PANEL WITH CONCEALED FASTENERS, 'PURE WHITE' FINISH.
- 5 KOVACH K-WALL METAL PANEL WITH CONCEALED FASTENERS, 'BROWN COPPER' FINISH.
- 6 KOVACH K-WALL METAL PANEL WITH CONCEALED FASTENERS, 'SILVER METALLIC' FINISH.
- 7 KOVACH PERFORATED METAL PANEL RMP7236 WITH 40% STAGGERED SPACING, 'CHARCOAL' FINISH.
- 8 PAINTED STUCCO W/ SAND TEXTURE FINISH. PAINT SHERWIN WILLIAMS #7674 'PEPPERCORN'
- 9 PAINTED STUCCO W/ SAND TEXTURE FINISH. PAINT SHERWIN WILLIAMS #6122 'CAMELBACK'
- 10 PAINTED STUCCO W/ SAND TEXTURE FINISH. PAINT SHERWIN WILLIAMS #9163 'TIN LIZZIE'
- 11 PAINTED METAL AWNING. SHERWIN WILLIAMS #7005 'PURE WHITE'
- 12 PAINTED METAL AWNING. SHERWIN WILLIAMS #7674 'PEPPERCORN'
- 13 PAINTED METAL AWNING. SHERWIN WILLIAMS #6090 'JAVA'
- 14 PAINTED METAL AWNING. SHERWIN WILLIAMS #6712 'LUAU GREEN'
- 15 KOVACH ALUMINUM COMPOSITE PANEL WITH CONCEALED FASTENERS, 'SKY BLUE' FINISH.