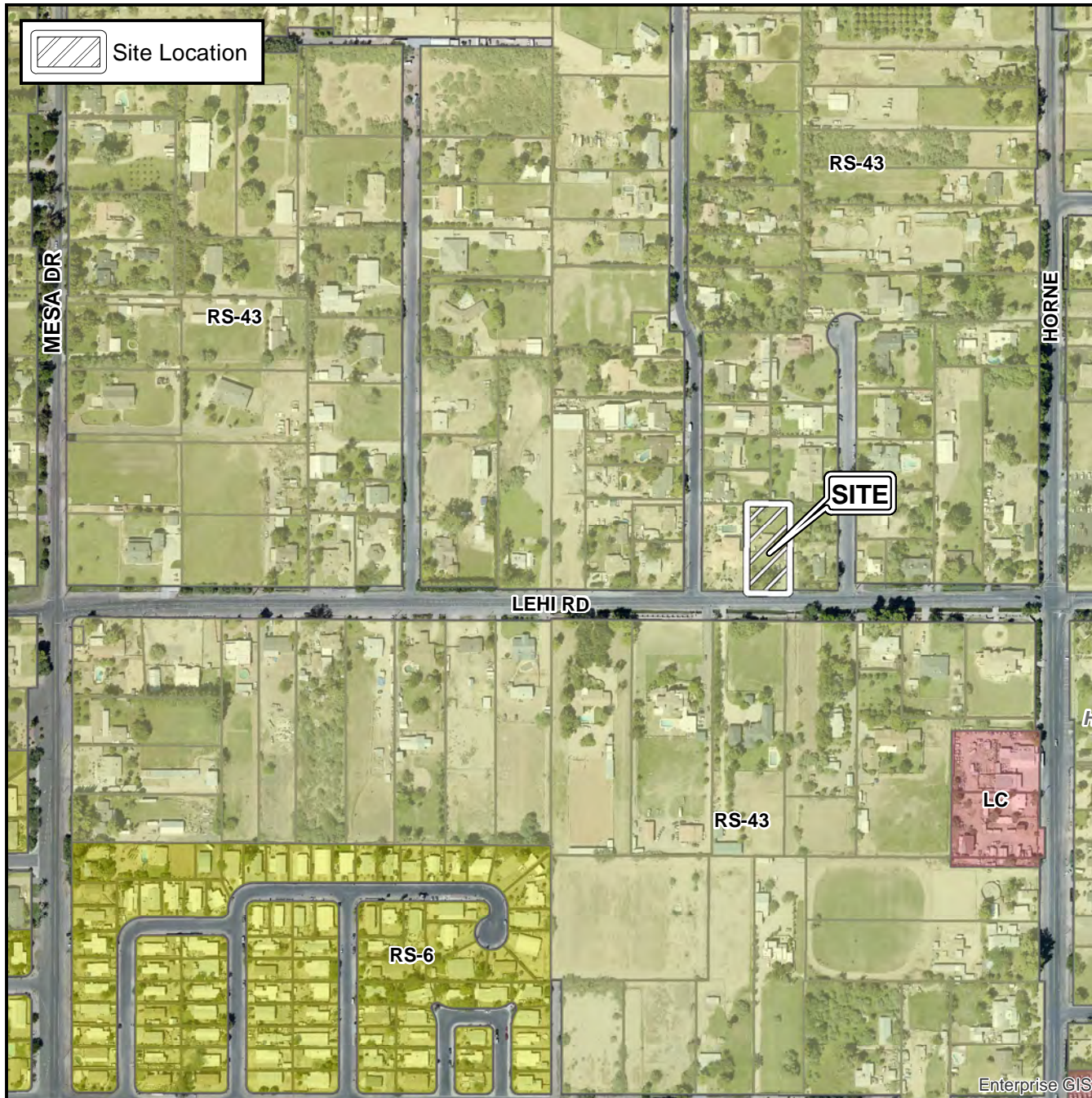


# Board of Adjustment Vicinity Map: BA17-036

## Case Details



### Case:

BA17-036

### Site / Address:

648 E Lehi Rd - (District 1)

### Request:

Requesting variances to allow 1) a detached accessory structure to encroach into the required west side yard, and 2) an accessory dwelling unit to encroach into the required east side yard, and 3) deviation from the required minimum dimensions for covered parking in the RS-43 District.

