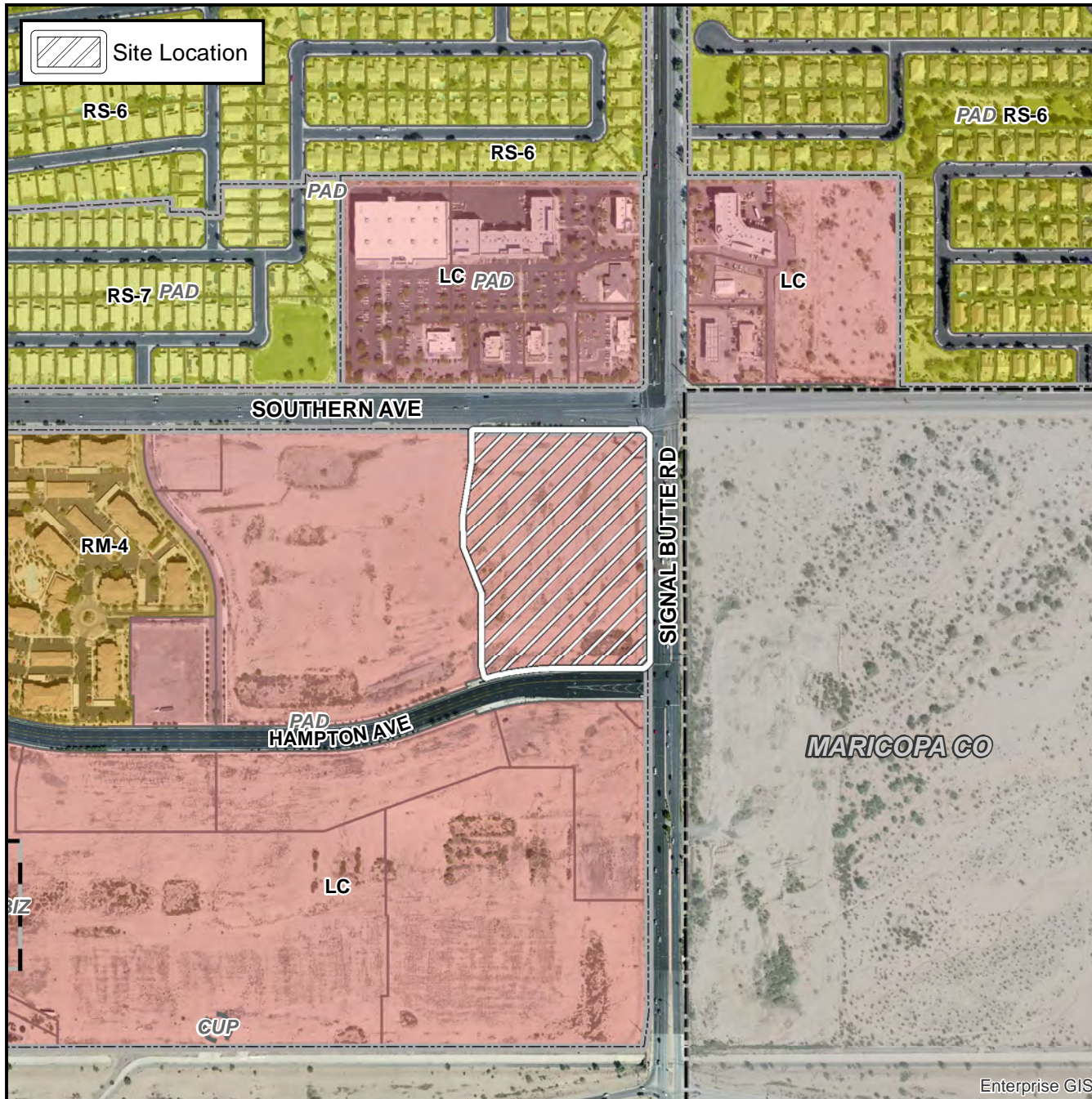


Board of Adjustment Vicinity Map: BOA17-00210



Case Details

Case:

BOA17-00210

Site / Address:

The 10700 to 10800 blocks of East Southern Avenue (south side) and the 1200 through 1300 blocks of South Signal Butte Road (west side) (District 6)

Request:

Requesting a Special Use Permit (SUP) for a Comprehensive Sign Plan (CSP) in the LC-PAD District.

