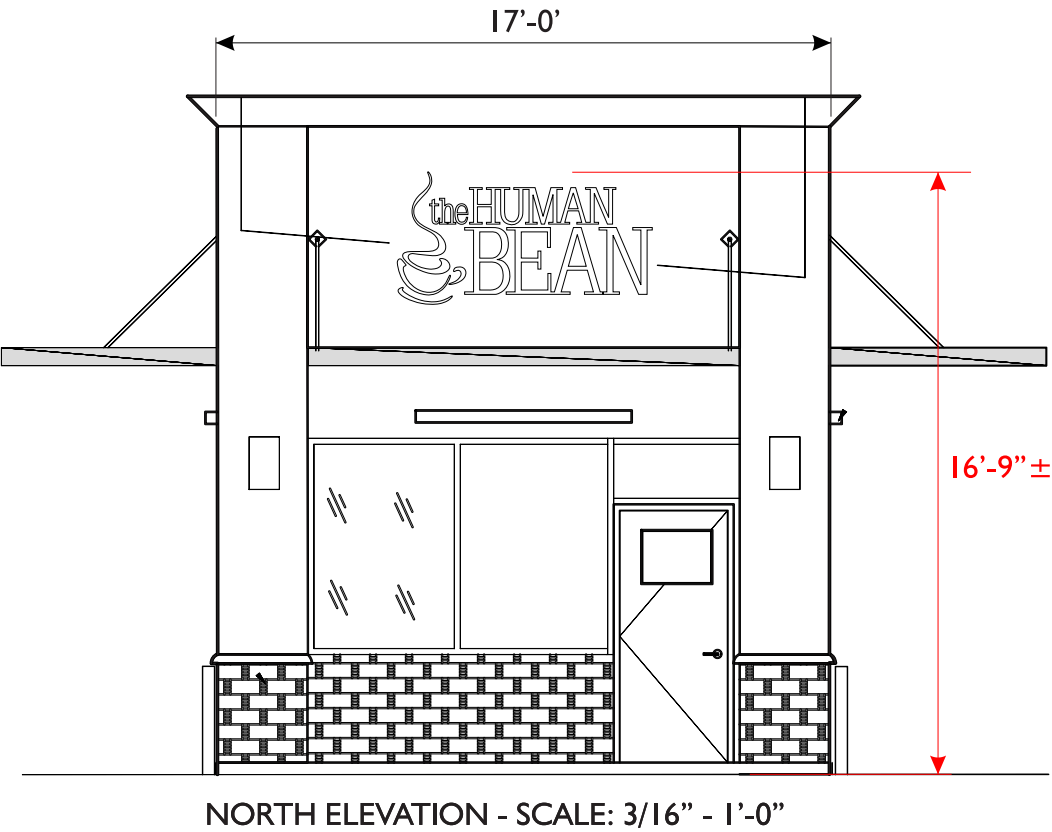
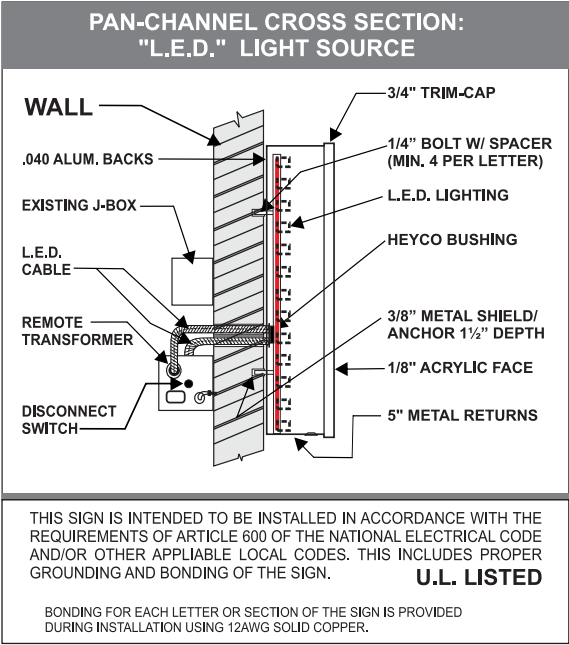




C INTERNALLY-ILLUMINATED PAN CHANNEL LETTERS
SCALE: 3/4" = 1'-0" 26.09 SQ.FT.

MANUFACTURE AND INSTALL (1) SET OF INTERNALLY-ILLUMINATED PAN CHANNEL LETTERS. 5" RETURNS AND TRIM CAP ARE BLACK, WHITE ACRYLIC FACES, WHITE LEDS. MOUNT FLUSH TO FASCIA AS SHOWN.



THIS DRAWING IS THE INTELLECTUAL PROPERTY OF ARIZONA COMMERCIAL SIGNS. REPRODUCTION IS PROHIBITED BY LAW - STATUTE: 17 U.S.C. §§ 101-810

www.arizonacommercialsigns.com



PROJECT NAME:

■ HUMAN BEAN
29 S. POWER RD
MESA, ARIZONA 85207

CONTACT: BRIAN SHERRILL
PHONE: 541-591-3941

CONTACT REP:

■ GARY DANKS - 480-577-3363

DESIGNER:

■ JWALLACE

DESIGN NUMBER:

■ HUMAN BEAN 12-13-16-R4 COMP

SCALE:

■ NOTED

DATE:

■ 12/13/16

REVISIONS:

1	ADD CUP	05/08/17	JW
2			
3	DELETE A1, D/REDUCE B & C	06/19/17	JW
4	SPLIT PG 2	06/29/17	JW
5			

LANDLORD / DEVELOPER APPROVAL
SIGNATURE & DATE:

■
CUSTOMER APPROVAL
SIGNATURE & DATE:

SHEET:

1 OF 2
COMP