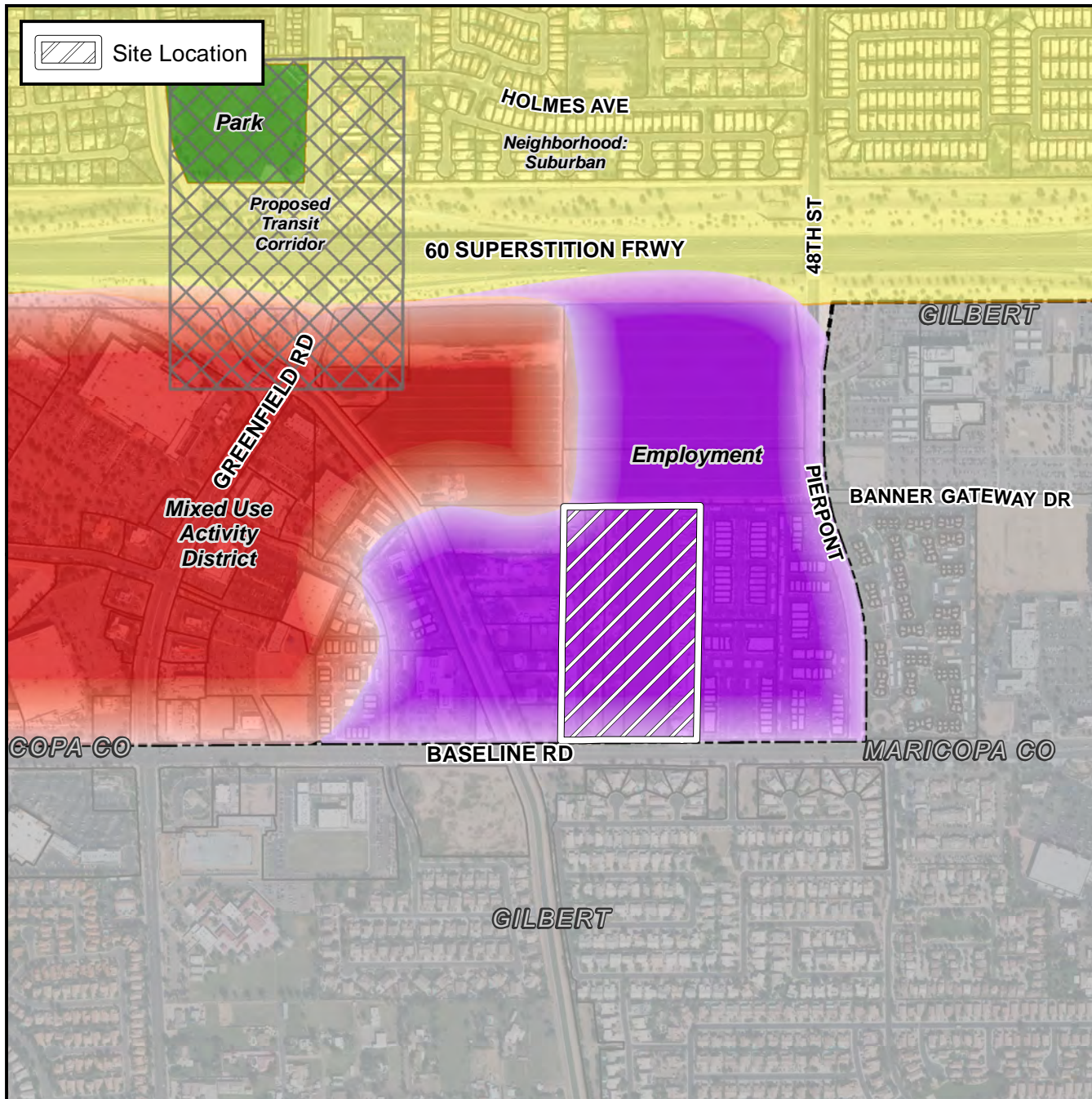


Planning and Zoning Vicinity Map: GPMinor17-001



Case Details

CASE:

GPMinor17-001

SITE / ADDRESS:

The 4700 through 4800 block of East Baseline Road (north side). District 2. Located east of Greenfield Road on the north side of Baseline Road. (21.8± acres).

REQUEST:

Minor General Plan amendment to change Character Type from Employment to Mixed Use Activity District. The request will allow for the development of a multi-residential complex.

