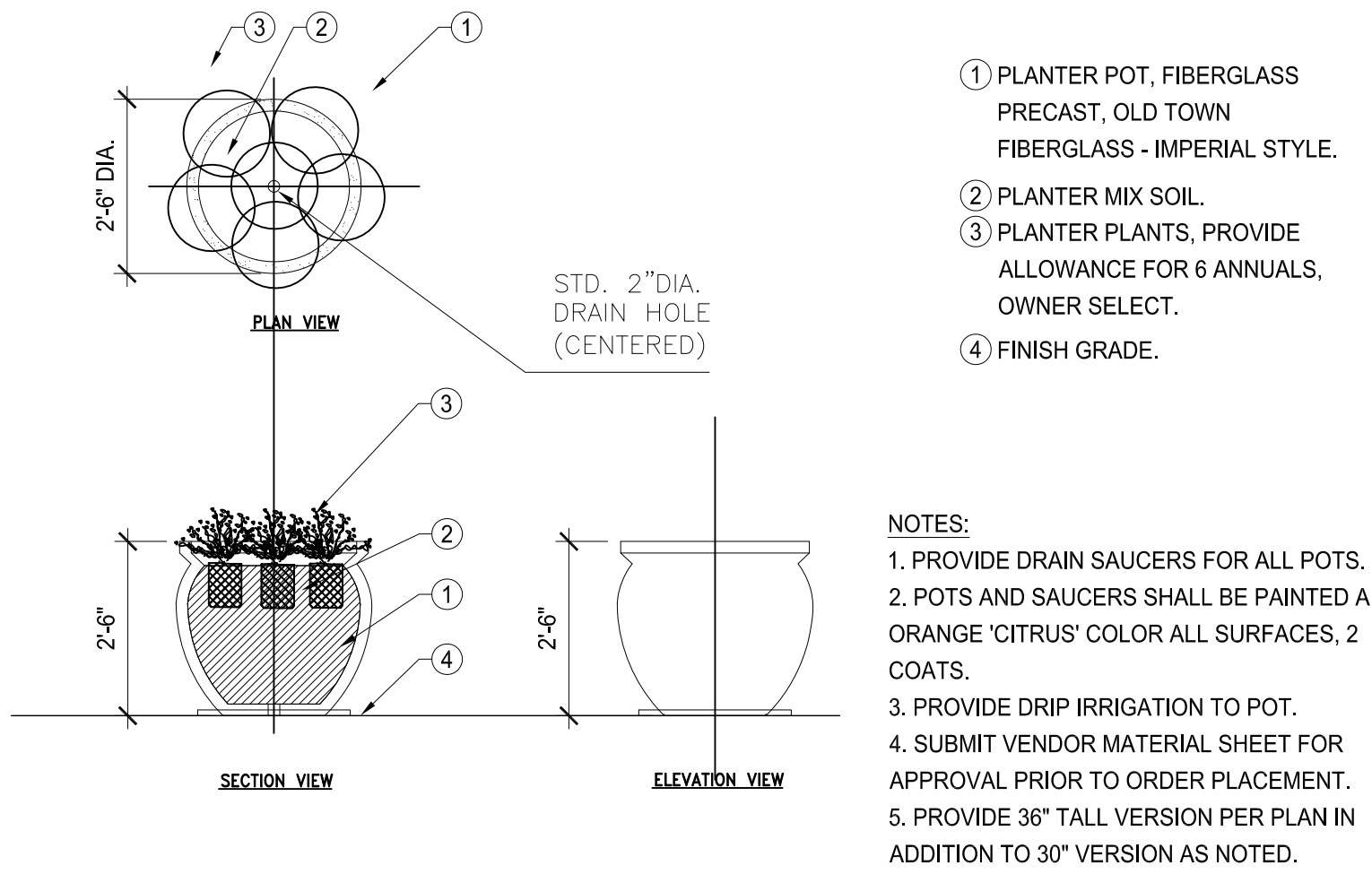
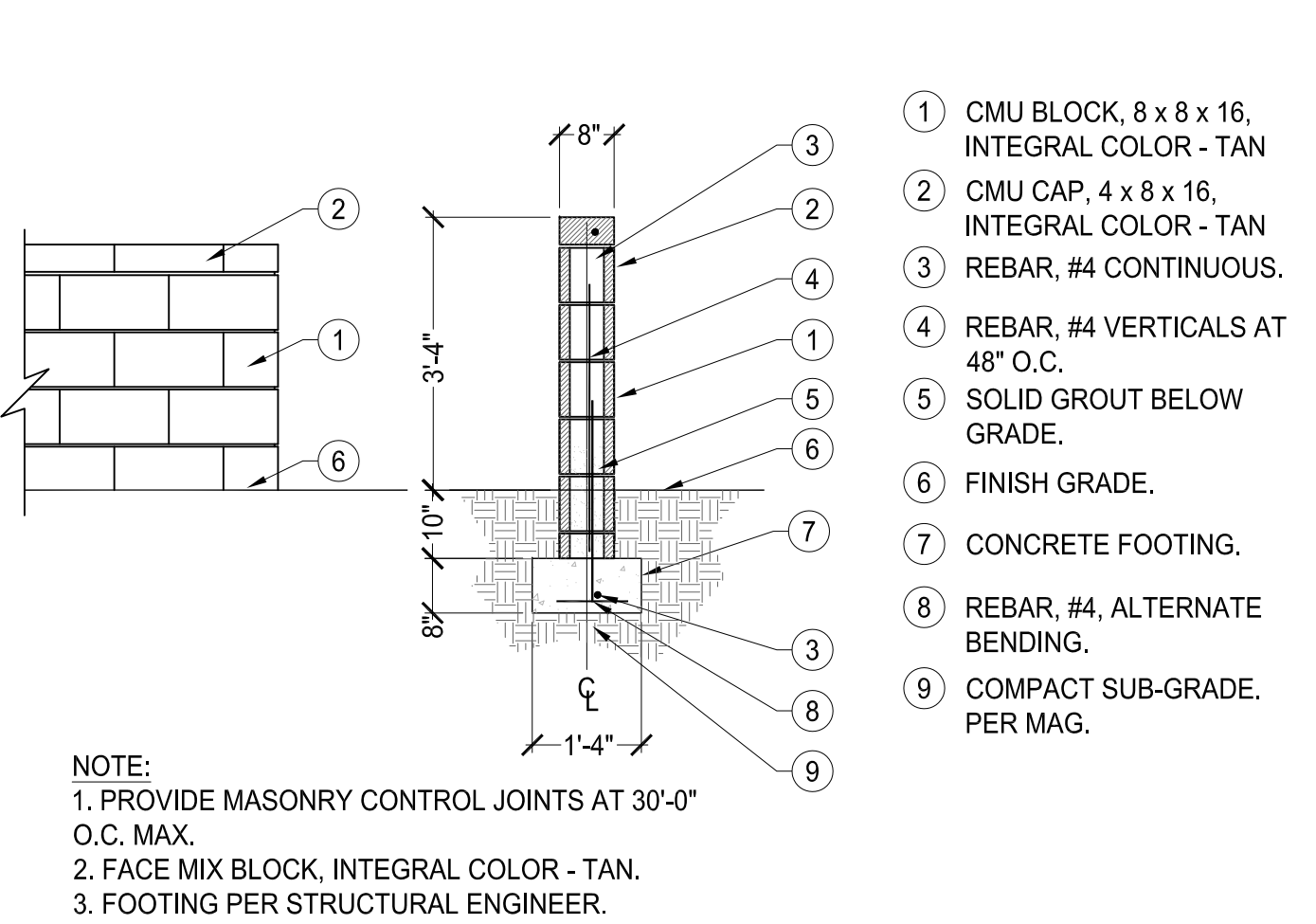




Reuse, reproduction by any method in part or in whole is prohibited without HP+D written consent.

This drawing is an instrument of service and the property of Harrington Planning + Design and shall be restricted to the original site for which it was prepared and publication therefore is expressly limited to such use.



## GENERAL PROJECT NOTES

1. PROVIDE WORK IN ACCORDANCE WITH THESE PLANS, DETAILS, AND SPECIFICATIONS, AND PER APPLICABLE CODES AND CITY REQUIREMENTS.
2. CAREFULLY INSPECT SITE AND VERIFY CONDITIONS AND DIMENSIONS PRIOR TO PROCEEDING WITH WORK DESCRIBED HEREIN. NOTIFY LANDSCAPE ARCHITECT OF ANY DISCREPANCIES WITH THESE DOCUMENTS PRIOR TO BEGINNING CONSTRUCTION.
3. CARRY WORKER'S COMPENSATION, PUBLIC LIABILITY, AND PROPERTY DAMAGE INSURANCE AS REQUIRED BY LAW AND OWNER.
4. HOLD HARMLESS AND INDEMNIFICATION CLAUSE - CONTRACTOR SHALL AGREE THAT IN ACCORDANCE WITH GENERALLY ACCEPTED CONSTRUCTION PRACTICES, CONTRACTOR SHALL BE REQUIRED TO ASSUME SOLE AND COMPLETE RESPONSIBILITY FOR JOB SITE CONDITIONS DURING COURSE OF CONSTRUCTION OF PROJECT, INCLUDING SAFETY TO PERSONS AND PROPERTY; THIS REQUIREMENT SHALL BE MADE TO APPLY CONTINUOUSLY AND NOT BE LIMITED TO NORMAL WORKING HOURS; AND THAT THE CONTRACTOR SHALL DEFEND, INDEMNIFY, AND HOLD LANDSCAPE ARCHITECT HARMLESS FROM ANY AND ALL LIABILITY, REAL OR ALLEGED, IN CONNECTION WITH PERFORMANCE OF WORK ON THIS PROJECT, EXCEPTING FOR LIABILITY ARISING FROM SOLE NEGLIGENCE OF LANDSCAPE ARCHITECT.
5. DAMAGE RESPONSIBILITY - ASSUME FULL RESPONSIBILITY FOR DAMAGE IMPOSED, INTENTIONALLY OR ACCIDENTALLY, TO EXISTING UTILITIES, BUILDINGS, OR OTHER AMENITIES, DUE TO THE ACTIONS OF CONTRACTOR, CONTRACTOR'S EMPLOYEES, AND/OR CONTRACTOR'S SUB CONTRACTORS. PROTECT THE WORK FROM DAMAGE AND THEFT AND REPLACE DAMAGE OR STOLEN PARTS UNTIL THE WORK IS ACCEPTED IN WRITING FROM OWNER.
6. UNAUTHORIZED CHANGES TO PLANS - LANDSCAPE ARCHITECT SHALL NOT BE RESPONSIBLE FOR, OR LIABLE FOR, UNAUTHORIZED CHANGES TO OR USE OF THESE DRAWINGS. REQUEST FOR CHANGES MUST BE IN WRITING AND MUST BE APPROVED BY LANDSCAPE ARCHITECT PRIOR TO COMMENCEMENT OF WORK.
7. APPLY, PAY FOR, AND OBTAIN, REQUIRED PERMITS TO COMPLETE WORK.
8. TRADE COORDINATION - CONSTRUCTION AND INSTALLATION OF ITEMS WITHIN THESE DOCUMENTS SHALL REQUIRE CLOSE COORDINATION BETWEEN TRADES INVOLVED IN UNDERGROUND AND UTILITY INSTALLATION, AND TREE LOCATION. BE RESPONSIBLE TO INSURE PROPER COORDINATION BETWEEN TRADES TO INSURE AND AVOID CONSTRUCTION DELAYS OR DAMAGE TO IMPROVEMENTS OR UTILITIES.
9. UNDERGROUND SERVICE ALERT - NOTIFY BLUE STAKE 48 HOURS PRIOR TO DIGGING AT 1-800-STAKE-IT. EXERCISE EXTREME CARE IN WORKING NEAR EXISTING UTILITIES. VERIFY LOCATION AND CONDITION OF UTILITIES PRIOR TO CONSTRUCTION.
10. INSPECTIONS - NOTIFY MUNICIPAL REPRESENTATIVE AT LEAST 48 HOURS IN ADVANCE PRIOR TO REQUIRED MUNICIPAL INSPECTION.
11. NOTIFY OWNER AND CONSTRUCTION ADMINISTRATION ENGINEER AT LEAST 48 HOURS IN ADVANCE OF REQUIRED OR DESIRED INSPECTION.
12. THESE DRAWINGS AND SPECIFICATIONS ARE PROPERTY AND COPYRIGHT OF A GROUP LANDSCAPE ARCHITECTS/ ENVIRONMENTAL DESIGNERS; AND LAND PLANNERS AND SHALL NOT BE USED ON ANY OTHER WORK EXCEPT BY WRITTEN AUTHORIZATION FROM HARRINGTON PLANNING + DESIGN (HP+D).
13. NOTIFY OWNER AND LANDSCAPE ARCHITECT / CONSTRUCTION ADMINISTRATION ENGINEER OF DISCREPANCIES PRIOR TO COMMENCEMENT OF WORK.
14. QUANTITIES INDICATED ON PLANS ARE PROVIDED AS A COURTESY ONLY. VERIFY QUANTITIES BY CONDUCTING AN INDEPENDENT QUANTITY TAKE OFF.
15. CONSTRUCTION ADMINISTRATION ENGINEER SHALL DECIDE QUESTIONS RELATING TO INTERPRETATION OF DRAWINGS AND ACCEPTABLE FULFILLMENT OF CONTRACT DOCUMENTS.
16. MAINTAIN PREMISES CLEAN AND FREE OF EXCESS EQUIPMENT, MATERIALS, AND RUBBISH INCIDENTAL TO WORK AT ALL TIMES INCLUDING WEEKENDS AND HOLIDAYS. RUBBLE, TRASH, OR DISPOSABLE ITEMS RESULTING FROM DEMOLITION OR CONSTRUCTION SHALL BE DISPOSED OF IN A LEGAL, LAWFUL, AND SAFE MANNER TO AN APPROVED DISPOSAL SITE.
17. PLANT MATERIAL TO BE APPROVED BY OWNER PRIOR TO INSTALLATION. TREES MAY REQUIRE A NUMBERED HP+D TAG OR AS APPROVED BY CONSTRUCTION ADMINISTRATION ENGINEER.
18. LOCATE AND FLAG PLANT MATERIAL LOCATIONS AND RECEIVE OWNER APPROVAL AND APPROVED BY THE LANDSCAPE ARCHITECT PRIOR TO HOLES BEING DUG.
19. RECEIVE OWNER APPROVAL OF FINISH GRADES PRIOR TO THE INSTALLATION OF PLANT MATERIAL.
20. BE RESPONSIBLE FOR COORDINATION AND PROVIDE FINISHED GRADES.
21. VERIFY BERM AND RETENTION BASIN LOCATIONS SHOWN ON THESE PLANS WITH THOSE ON THE CIVIL ENGINEERING PLANS. SHOULD A DISCREPANCY EXIST, NOTIFY OWNER/CONSTRUCTION ADMINISTRATION ENGINEER IMMEDIATELY.
22. PROVIDE POSITIVE DRAINAGE AWAY FROM BUILDINGS DURING FINISH GRADING PROCESS.
23. UNCONDITIONALLY GUARANTEE ALL PLANTS FOR ONE YEAR AFTER ACCEPTANCE.
24. NO SLOPES TO EXCEED 4:1 IN LANDSCAPE AREAS.
25. DO NOT PLANT ANY TREE WITHIN 5' OF ANY BUILDING WITHOUT THE EXPRESS WRITTEN APPROVAL OF LANDSCAPE ARCHITECT / CONSTRUCTION ADMINISTRATION ENGINEER. MAINTAIN CLEARANCES FOR PUBLIC UTILITIES AND PER LIFE SAFETY CODE REQUIREMENTS. NOTIFY OWNER/ CONSTRUCTION ADMINISTRATION ENGINEER AND LANDSCAPE ARCHITECT IF CONFLICTS EXIST.
26. INFORM LANDSCAPE ARCHITECT/OWNER/CONSTRUCTION ADMINISTRATION ENGINEER OF ANY PLANT MATERIAL CONCERNS BASED ON PLANTING SEASON (E.G. WINTER, SUMMER).

## LANDSCAPE CALCULATIONS CITY OF MESA

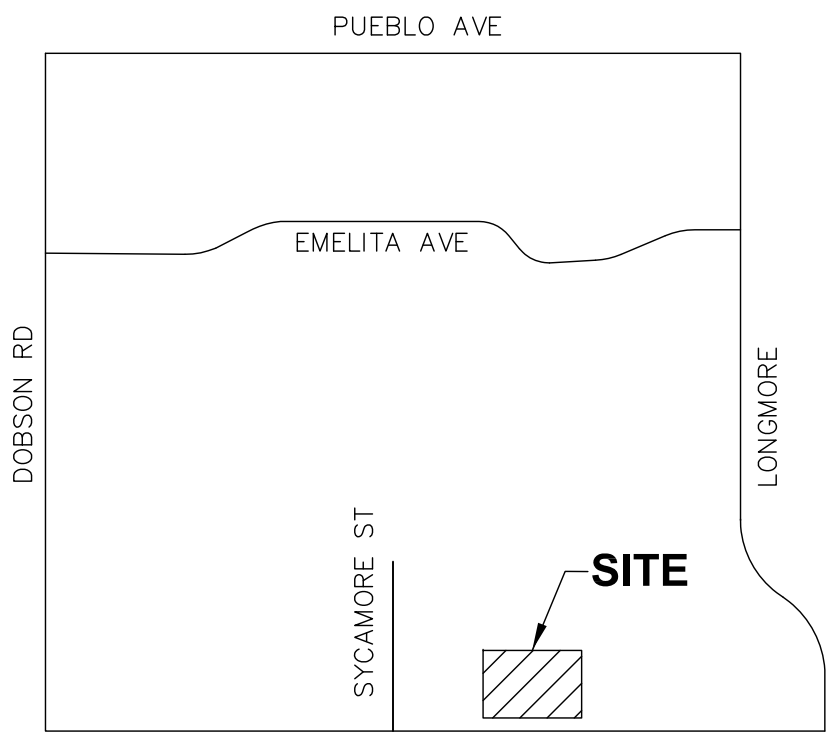
	REQUIRED	PROVIDED
PERIMETER LANDSCAPE PER 11-33-3 MESA Z/O ARTERIAL STREET - U DESIGNATE	3 TREE / 24 SHRUB PER 100 FT FRONTAGE	EXISTING FIESTA STREETSCAPE
COVERAGE AREA	50% OF LS AREA	70%
INTERIOR PARKING LANDSCAPE PER 11-33-4 MESA Z/O	1 TREE / 3 SHRUB PER PLANTER ISLAND	1 TREE / 4 SHRUB
FOUNDATION LANDSCAPE PER 11-33-5 MESA Z/O*	1 TREE / 50 LF BUILDING FACE	214 FT TOTAL FACE = 4.3 TREE 5 TREES

\* FOUNDATION SHRUBS ARE PART OF  
DRIVE THRU LANE AND PLANTER POTS

## PLANTING MATERIAL LEGEND

TREES	SIZE	NOTES	QTY
Acacia stenophylla Shoestring Acacia Caliper Size: 2.0"	36" Box 7" T x 3" W	*ADWR	10
GROUNDCOVERS			QTY
Lantana mo. 'Gold Mound' Gold Mound Lantana	5 Gallon	*ADWR	8
SHRUBS / ACCENTS			QTY
Convolvulus mauritanicus Ground Morning Glory	5 Gallon	*ADWR	10
Hesperaloe parviflora Red Yucca	5 Gallon	*ADWR	21
Eremophila maculata 'Valentine' Valentine Bush	5 Gallon	*ADWR	22
LANDSCAPE MATERIALS			
Decomposed Granite. 3/4" screened, Express Gold color, 2" deep in planting areas per plan.			1030 s.f.

\*ADWR = Arizona Department of Water Resources Approved  
Low-Water Use Plant



## VICINITY MAP

## LANDSCAPE ARCHITECT

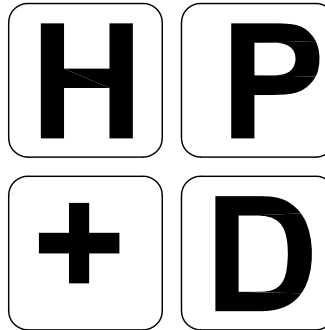
HARRINGTON PLANNING + DESIGN (HP+D)  
3116 S. MILL AVENUE, SUITE 305  
TEMPE, ARIZONA 85282  
JASON HARRINGTON, RLA, ASLA, ASIC, APWA  
(480) 250-0116  
JASON@HARRINGTONPLANNINGDESIGN.COM

## PROJECT DATA

PARCEL: 305-06-002K  
GROSS LOT AREA: 30,917 SF / 0.71 AC  
BUILDING AREA: 3350 SF  
EXISTING ZONING: C-2  
PROPOSED ZONING: C-2

## GENERAL SITE NOTES

1. FIELD VERIFY EXISTING SITE PRIOR TO BID AND CONSTRUCTION.
2. REFER TO CIVIL ENGINEERING PLANS FOR VERTICAL AND HORIZONTAL CONTROL.
3. PROTECT ALL UTILITIES DURING CONSTRUCTION.
4. LANDSCAPE SHALL COMPLY WITH MESA ZONING ORDINANCE CHAPTER 33 REQUIREMENTS.
5. LANDSCAPE AREAS ARE TO BE WATERED BY AUTOMATED IRRIGATION SYSTEM.
6. OWNER SHALL PROVIDE 12" DIA. SHADE UMBRELLAS FOR CAFE SPACE AT OUTDOOR TABLE AREA.
7. OWNER SHALL PROVIDE 30" DIA. FIBERGLASS PLANTER POTS, 30" TALL FOR LANDSCAPE BUFFER AT CAFE SPACE. PLANTERS SHALL INCLUDE AMENDED SOIL AND ANNUAL FLOWERS AT EACH POT. POT FINISH TO BE TAN.



HARRINGTON  
PLANNING + DESIGN

3116 S. Mill Avenue, Suite 305  
Tempe, Arizona 85282  
Tel: 480-250-0116  
www.HarringtonPlanningDesign.com



DRIVE THRU RESTAURANT

1710 W. Southern Ave  
Mesa, Arizona 85202

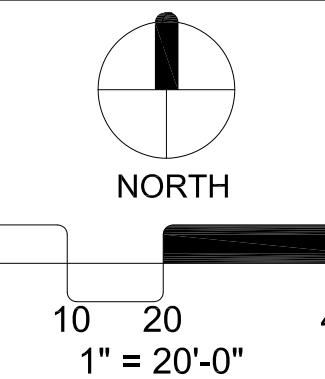
REV.	COMMENT	DATE

2ND City Submittal	06.13.17
1ST City Submittal	04.26.17
ISSUE	DATE

## Landscape Package

JUNE 13, 2017

DRAWN BY:	JEH
CHECK BY:	JEH
PROJ. NO.:	2016-024
CASE NO.:	-



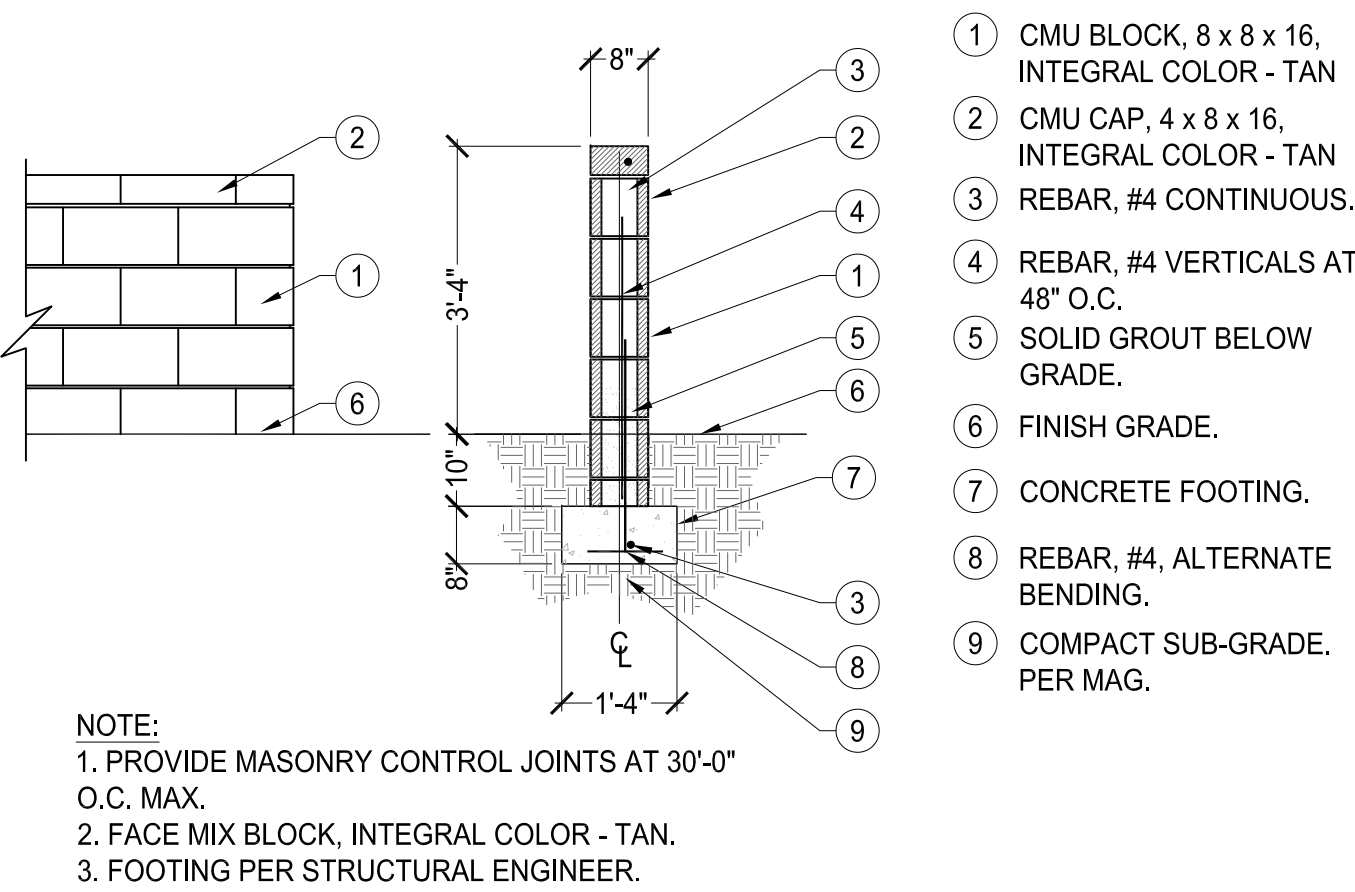
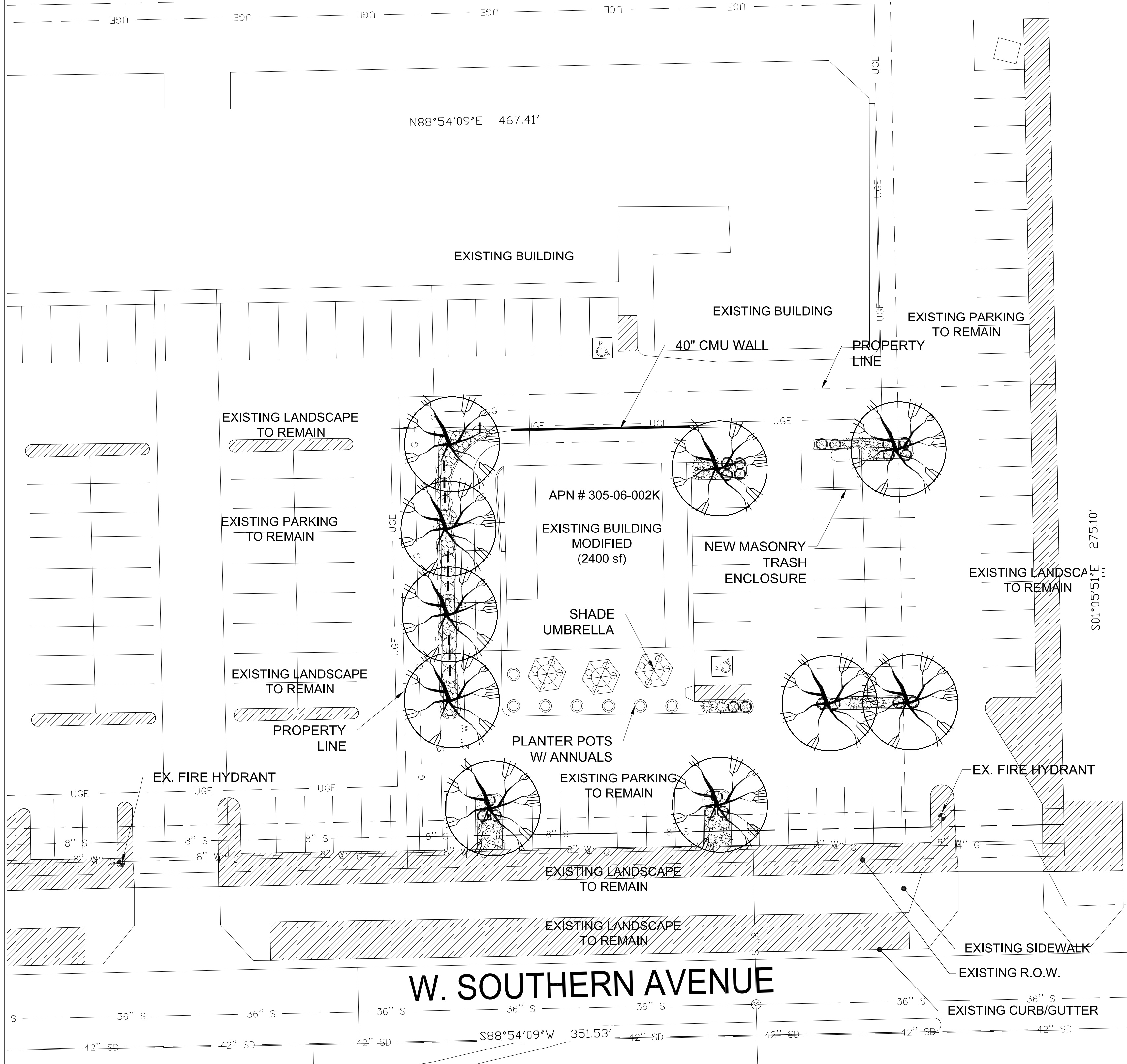
## LANDSCAPE PLAN

L1.0  
1 of 1



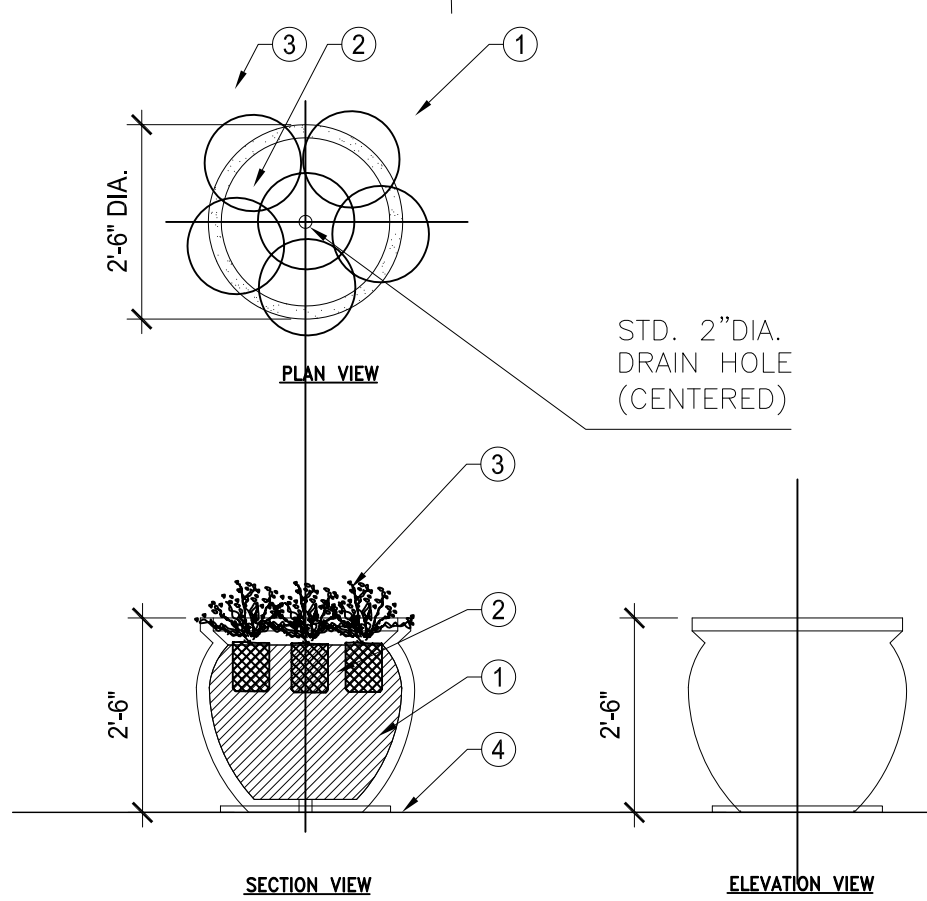
Reuse, reproduction by any method in part or in whole is prohibited without HP+D written consent.

This drawing is an instrument of service and the property of Harrington Planning + Design and shall be restricted to the original site for which it was prepared and publication therefore is expressly limited to such use.



NOTE:  
1. PROVIDE MASONRY CONTROL JOINTS AT 30'-0" O.C. MAX.  
2. FACE MIX BLOCK, INTEGRAL COLOR - TAN.  
3. FOOTING PER STRUCTURAL ENGINEER.

1 CMU SCREEN WALL, 40 IN. TALL  
SCALE: N.T.S.



NOTES:  
1. PROVIDE DRAIN SAUCERS FOR ALL POTS.  
2. POTS AND SAUCERS SHALL BE PAINTED A ORANGE 'CITRUS' COLOR ALL SURFACES, 2 COATS.  
3. PROVIDE DRIP IRRIGATION TO POT.  
4. SUBMIT VENDOR MATERIAL SHEET FOR APPROVAL PRIOR TO ORDER PLACEMENT.  
5. PROVIDE 36" TALL VERSION PER PLAN IN ADDITION TO 30" VERSION AS NOTED.

2 PLANTER POT - OLD TOWN FIBERGLASS - IMPERIAL 30"  
SCALE: N.T.S.

## GENERAL PROJECT NOTES

1. PROVIDE WORK IN ACCORDANCE WITH THESE PLANS, DETAILS, AND SPECIFICATIONS, AND PER APPLICABLE CODES AND CITY REQUIREMENTS.
2. CAREFULLY INSPECT SITE AND VERIFY CONDITIONS AND DIMENSIONS PRIOR TO PROCEEDING WITH WORK DESCRIBED HEREIN. NOTIFY LANDSCAPE ARCHITECT OF ANY DISCREPANCIES WITH THESE DOCUMENTS PRIOR TO BEGINNING CONSTRUCTION.
3. CARRY WORKER'S COMPENSATION, PUBLIC LIABILITY, AND PROPERTY DAMAGE INSURANCE AS REQUIRED BY LAW AND OWNER.
4. HOLD HARMLESS AND INDEMNIFICATION CLAUSE - CONTRACTOR SHALL AGREE THAT IN ACCORDANCE WITH GENERALLY ACCEPTED CONSTRUCTION PRACTICES, CONTRACTOR SHALL BE REQUIRED TO ASSUME SOLE AND COMPLETE RESPONSIBILITY FOR JOB SITE CONDITIONS DURING COURSE OF CONSTRUCTION OF PROJECT. INCLUDING SAFETY TO PERSONS AND PROPERTY; THIS REQUIREMENT SHALL BE MADE TO APPLY CONTINUOUSLY AND NOT BE LIMITED TO NORMAL WORKING HOURS; AND THAT THE CONTRACTOR SHALL DEFEND, INDEMNIFY, AND HOLD LANDSCAPE ARCHITECT HARMLESS FROM ANY AND ALL LIABILITY, REAL OR ALLEGED, IN CONNECTION WITH PERFORMANCE OF WORK ON THIS PROJECT, EXCEPTING FOR LIABILITY ARISING FROM SOLE NEGLIGENCE OF LANDSCAPE ARCHITECT.
5. DAMAGE RESPONSIBILITY - ASSUME FULL RESPONSIBILITY FOR DAMAGE IMPOSED, INTENTIONALLY OR ACCIDENTALLY, TO EXISTING UTILITIES, BUILDINGS, OR OTHER AMENITIES, DUE TO THE ACTIONS OF CONTRACTOR, CONTRACTOR'S EMPLOYEES, AND/OR CONTRACTOR'S SUB CONTRACTORS. PROTECT THE WORK FROM DAMAGE AND THEFT AND REPLACE DAMAGE OR STOLEN PARTS UNTIL THE WORK IS ACCEPTED IN WRITING FROM OWNER.
6. UNAUTHORIZED CHANGES TO PLANS - LANDSCAPE ARCHITECT SHALL NOT BE RESPONSIBLE FOR, OR LIABLE FOR, UNAUTHORIZED CHANGES TO OR USE OF THESE DRAWINGS. REQUEST FOR CHANGES MUST BE IN WRITING AND MUST BE APPROVED BY LANDSCAPE ARCHITECT PRIOR TO COMMENCEMENT OF WORK.
7. APPLY, PAY FOR, AND OBTAIN, REQUIRED PERMITS TO COMPLETE WORK.
8. TRADE COORDINATION - CONSTRUCTION AND INSTALLATION OF ITEMS WITHIN THESE DOCUMENTS SHALL REQUIRE CLOSE COORDINATION BETWEEN TRADES INVOLVED IN UNDERGROUND AND UTILITY INSTALLATION, AND TREE LOCATION. BE RESPONSIBLE TO INSURE PROPER COORDINATION BETWEEN TRADES TO INSURE AND AVOID CONSTRUCTION DELAYS OR DAMAGE TO IMPROVEMENTS OR UTILITIES.
9. UNDERGROUND SERVICE ALERT - NOTIFY BLUE STAKE 48 HOURS PRIOR TO DIGGING AT 1-800-STAKE-IT. EXERCISE EXTREME CARE IN WORKING NEAR EXISTING UTILITIES. VERIFY LOCATION AND CONDITION OF UTILITIES PRIOR TO CONSTRUCTION.
10. INSPECTIONS - NOTIFY MUNICIPAL REPRESENTATIVE AT LEAST 48 HOURS IN ADVANCE PRIOR TO REQUIRED MUNICIPAL INSPECTION.
11. NOTIFY OWNER AND CONSTRUCTION ADMINISTRATION ENGINEER AT LEAST 48 HOURS IN ADVANCE OF REQUIRED OR DESIRED INSPECTION.
12. THESE DRAWINGS AND SPECIFICATIONS ARE PROPERTY AND COPYRIGHT OF HARRINGTON PLANNING + DESIGN (HP+D). LANDSCAPE ARCHITECTS/ ENVIRONMENTAL DESIGNERS, AND LAND PLANNERS AND SHALL NOT BE USED ON ANY OTHER WORK EXCEPT BY WRITTEN AUTHORIZATION FROM HARRINGTON PLANNING + DESIGN (HP+D).
13. NOTIFY OWNER AND LANDSCAPE ARCHITECT / CONSTRUCTION ADMINISTRATION ENGINEER OF DISCREPANCIES PRIOR TO COMMENCEMENT OF WORK.
14. QUANTITIES INDICATED ON PLANS ARE PROVIDED AS A COURTESY ONLY. VERIFY QUANTITIES BY CONDUCTING AN INDEPENDENT QUANTITY TAKE OFF.
15. CONSTRUCTION ADMINISTRATION ENGINEER SHALL DECIDE QUESTIONS RELATING TO INTERPRETATION OF DRAWINGS AND ACCEPTABLE FULFILLMENT OF CONTRACT DOCUMENTS.
16. MAINTAIN PREMISES CLEAN AND FREE OF EXCESS EQUIPMENT, MATERIALS, AND RUBBISH INCIDENTAL TO WORK AT ALL TIMES INCLUDING WEEKENDS AND HOLIDAYS. RUBBLE, TRASH, OR DISPOSABLE ITEMS RESULTING FROM DEMOLITION OR CONSTRUCTION SHALL BE DISPOSED OF IN A LEGAL, LAWFUL, AND SAFE MANNER TO AN APPROVED DISPOSAL SITE.
17. PLANT MATERIAL TO BE APPROVED BY OWNER PRIOR TO INSTALLATION. TREES MAY REQUIRE A NUMBERED HP+D TAG OR AS APPROVED BY CONSTRUCTION ADMINISTRATION ENGINEER.
18. LOCATE AND FLAG PLANT MATERIAL LOCATIONS AND RECEIVE OWNER APPROVAL AND APPROVED BY THE LANDSCAPE ARCHITECT PRIOR TO HOLES BEING DUG.
19. RECEIVE OWNER APPROVAL OF FINISH GRADES PRIOR TO THE INSTALLATION OF PLANT MATERIAL.
20. BE RESPONSIBLE FOR COORDINATION AND PROVIDE FINISHED GRADES.
21. VERIFY BERM AND RETENTION BASIN LOCATIONS SHOWN ON THESE PLANS WITH THOSE ON THE CIVIL ENGINEERING PLANS. SHOULD A DISCREPANCY EXIST, NOTIFY OWNER/CONSTRUCTION ADMINISTRATION ENGINEER IMMEDIATELY.
22. PROVIDE POSITIVE DRAINAGE AWAY FROM BUILDINGS DURING FINISH GRADING PROCESS.
23. UNCONDITIONALLY GUARANTEE ALL PLANTS FOR ONE YEAR AFTER ACCEPTANCE.
24. NO SLOPES TO EXCEED 4:1 IN LANDSCAPE AREAS.
25. DO NOT PLANT ANY TREE WITHIN 5' OF ANY BUILDING WITHOUT THE EXPRESS WRITTEN APPROVAL OF LANDSCAPE ARCHITECT / CONSTRUCTION ADMINISTRATION ENGINEER. MAINTAIN CLEARANCES FOR PUBLIC UTILITIES AND PER LIFE SAFETY CODE REQUIREMENTS. NOTIFY OWNER/ CONSTRUCTION ADMINISTRATION ENGINEER AND LANDSCAPE ARCHITECT IF CONFLICTS EXIST.
26. INFORM LANDSCAPE ARCHITECT/OWNER/CONSTRUCTION ADMINISTRATION ENGINEER OF ANY PLANT MATERIAL CONCERNS BASED ON PLANTING SEASON (E.G. WINTER, SUMMER).

## LANDSCAPE CALCULATIONS CITY OF MESA

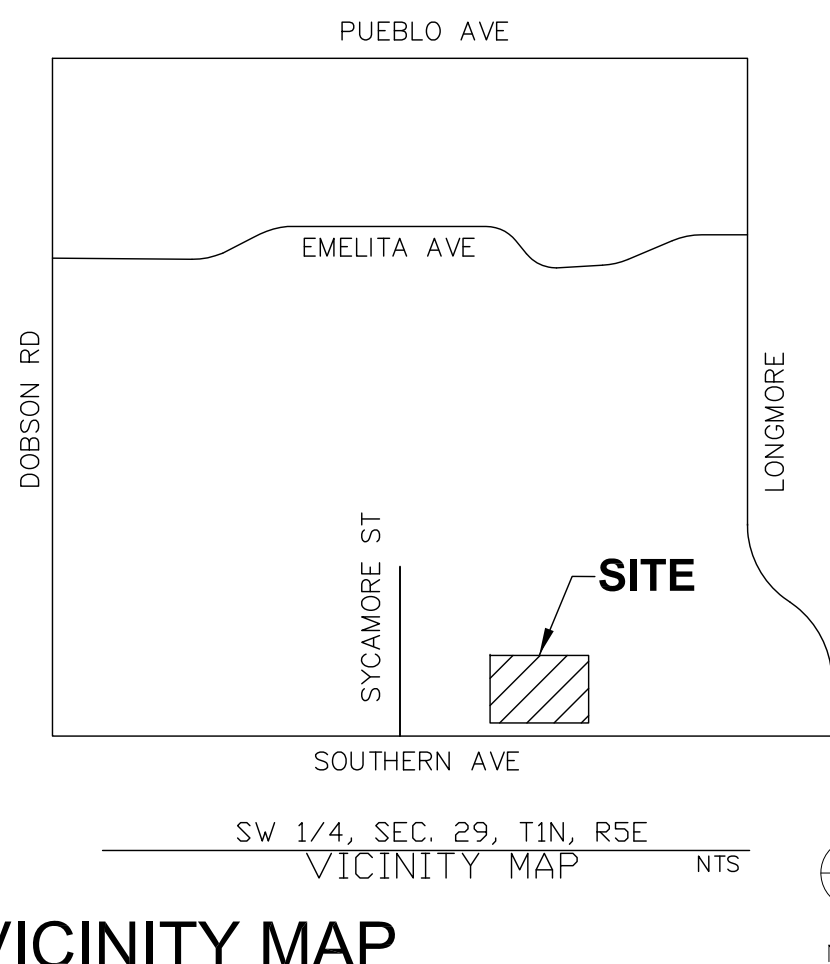
	REQUIRED	PROVIDED
PERIMETER LANDSCAPE PER 11-33-3 MESA Z/O ARTERIAL STREET - U DESIGNATE	3 TREE / 24 SHRUB PER 100 FT FRONTAGE	EXISTING FIESTA STREETSCAPE
COVERAGE AREA	50% OF LS AREA	70%
INTERIOR PARKING LANDSCAPE PER 11-33-4 MESA Z/O	1 TREE / 3 SHRUB PER PLANTER ISLAND	1 TREE / 4 SHRUB
FOUNDATION LANDSCAPE PER 11-33-5 MESA Z/O*	1 TREE / 50 LF BUILDING FACE	214 FT TOTAL FACE = 4.3 TREE 5 TREES

\* FOUNDATION SHRUBS ARE PART OF  
DRIVE THRU LANE AND PLANTER POTS

## PLANTING MATERIAL LEGEND

TREES	SIZE	NOTES	QTY
Acacia stenophylla Shoestring Acacia Caliper Size: 2.0"	36" Box 7'T x 3'W	*ADWR	10
GROUNDCOVERS			QTY
Lantana mo. 'Gold Mound' Gold Mound Lantana	5 Gallon	*ADWR	8
SHRUBS / ACCENTS			QTY
Convolvulus mauritanicus Ground Morning Glory	5 Gallon	*ADWR	10
Hesperaloe parviflora Red Yucca	5 Gallon	*ADWR	21
Eremophila macuata 'Valentine' Valentine Bush	5 Gallon	*ADWR	22
LANDSCAPE MATERIALS			
Decomposed Granite. 3/4" screened, Express Gold color, 2" deep in planting areas per plan.			1030 s.f.

\*ADWR = Arizona Department of Water Resources Approved  
Low-Water Use Plant



## VICINITY MAP

## LANDSCAPE ARCHITECT

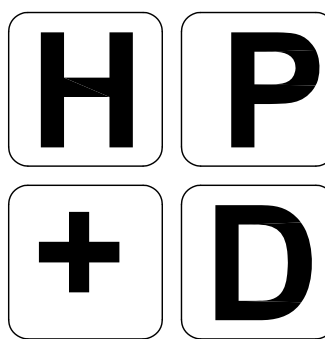
HARRINGTON PLANNING + DESIGN (HP+D)  
3116 S. MILL AVENUE, SUITE 305  
TEMPE, ARIZONA 85282  
JASON HARRINGTON, RLA, ASLA, ASIC, APWA  
(480) 250-0116  
JASON@HARRINGTONPLANNINGDESIGN.COM

## PROJECT DATA

PARCEL: 305-06-002K  
GROSS LOT AREA: 30,917 SF / 0.71 AC  
BUILDING AREA: 3350 SF  
EXISTING ZONING: C-2  
PROPOSED ZONING: C-2

## GENERAL SITE NOTES

1. FIELD VERIFY EXISTING SITE PRIOR TO BID AND CONSTRUCTION.
2. REFER TO CIVIL ENGINEERING PLANS FOR VERTICAL AND HORIZONTAL CONTROL.
3. PROTECT ALL UTILITIES DURING CONSTRUCTION.
4. LANDSCAPE SHALL COMPLY WITH MESA ZONING ORDINANCE CHAPTER 33 REQUIREMENTS.
5. LANDSCAPE AREAS ARE TO BE WATERED BY AUTOMATED IRRIGATION SYSTEM.
6. OWNER SHALL PROVIDE 12' DIA. SHADE UMBRELLAS FOR CAFE SPACE AT OUTDOOR TABLE AREA.
7. OWNER SHALL PROVIDE 30" DIA. FIBERGLASS PLANTER POTS, 30" TALL FOR LANDSCAPE BUFFER AT CAFE SPACE. PLANTERS SHALL INCLUDE AMENDED SOIL AND ANNUAL FLOWERS AT EACH POT. POT FINISH TO BE TAN.



HARRINGTON  
PLANNING + DESIGN

3116 S. MILL AVENUE, SUITE 305  
TEMPE, ARIZONA 85282  
TEL: 480-250-0116  
WWW.HARRINGTONPLANNINGDESIGN.COM



DRIVE THRU RESTAURANT

1710 W. Southern Ave  
Mesa, Arizona 85202

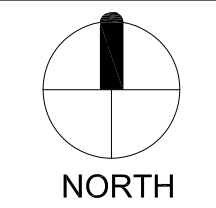
REV. COMMENT DATE

2ND City Submittal 06.13.17  
1ST City Submittal 04.26.17  
ISSUE DATE

## Landscape Package

JUNE 13, 2017

DRAWN BY: JE  
CHECK BY: JE  
PROJ. NO.: 2016-024  
CASE NO.: -



0 10 20 40  
1" = 20'-0"

## LANDSCAPE PLAN

L1.0

1 of 1