

SIGN A

Project Name: Mesa Commons		CONTACT:	
SCALE(S): 1/4" = 1' - 0"	ELEVATION: picture not to scale	ARTWORK DATE: 6-16-17	DATE OF APPROVAL:
		APPROVAL SIGNATURE:	

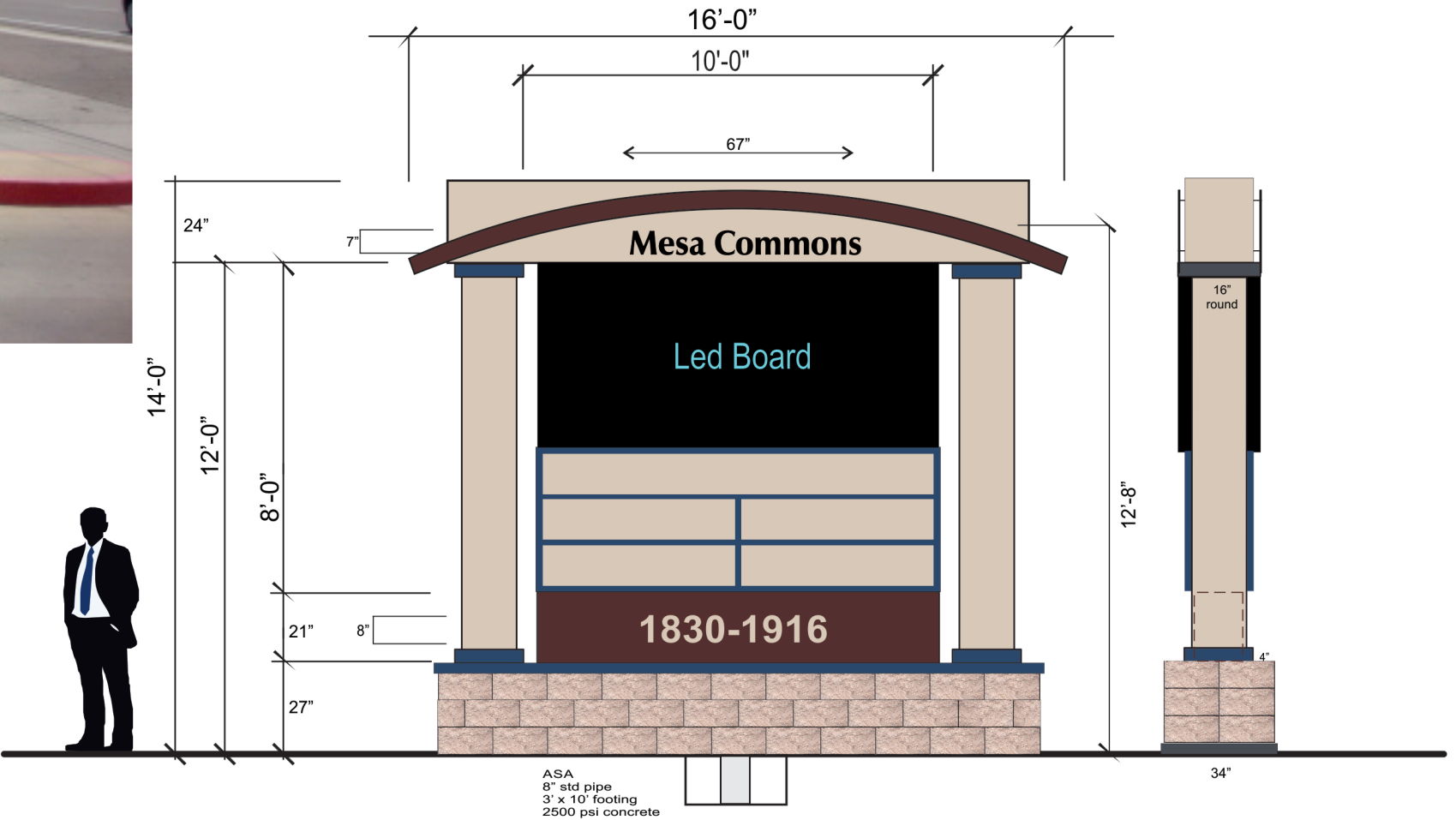
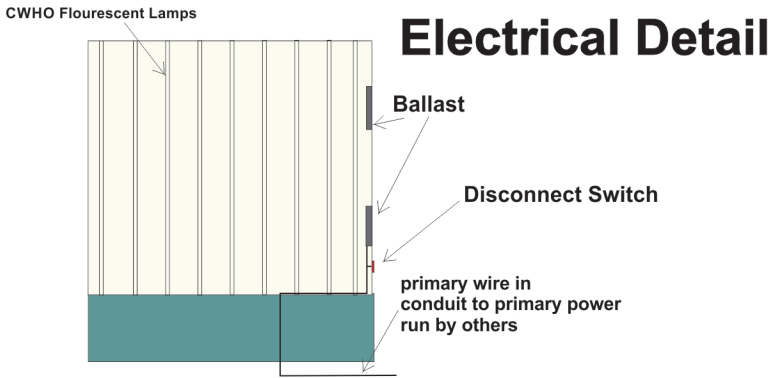


*This sign design is the property of The Sign Company of Arizona, LLC and any portions or design elements may not be reproduced without prior written consent!

- Mfg and install:
DOUBLE FACE MONUMENT SIGN
- aluminum construction
 - architectural top painted to center colors- center name to be FCO 3/8" aluminum letters painted black and non illuminated
 - architectural round side columns with reveals as drawn painted to match center colors
 - pole cover in aluminum construction painted to match center colors
**bottom pole cover is split face block to match center
 - 4' x 10' double face cabinet sign with routed aluminum sign faces; divider bar separation
 - internal fluorescent lamp illumination bottom cabinet only
 - 4' x 10' Full Color LED BOARD double face, 10-12mm resolution, changing per approved Use Permit
 - center pole mount
 - remove existing sign and dispose of



14' tall from sidewalk level



SIGN A-1

Project Name: Mesa Commons		CONTACT:	
SCALE(S): 1/4" = 1' - 0"	ELEVATION: picture not to scale	ARTWORK DATE: 6-29-15	DATE OF APPROVAL:
		APPROVAL SIGNATURE:	

*This sign design is the property of The Sign Company of Arizona, LLC and any portions or design elements may not be reproduced without prior written consent!

THE



COMPANY

OF ARIZONA

3534 N. 42nd Ave
Phoenix, AZ 85019

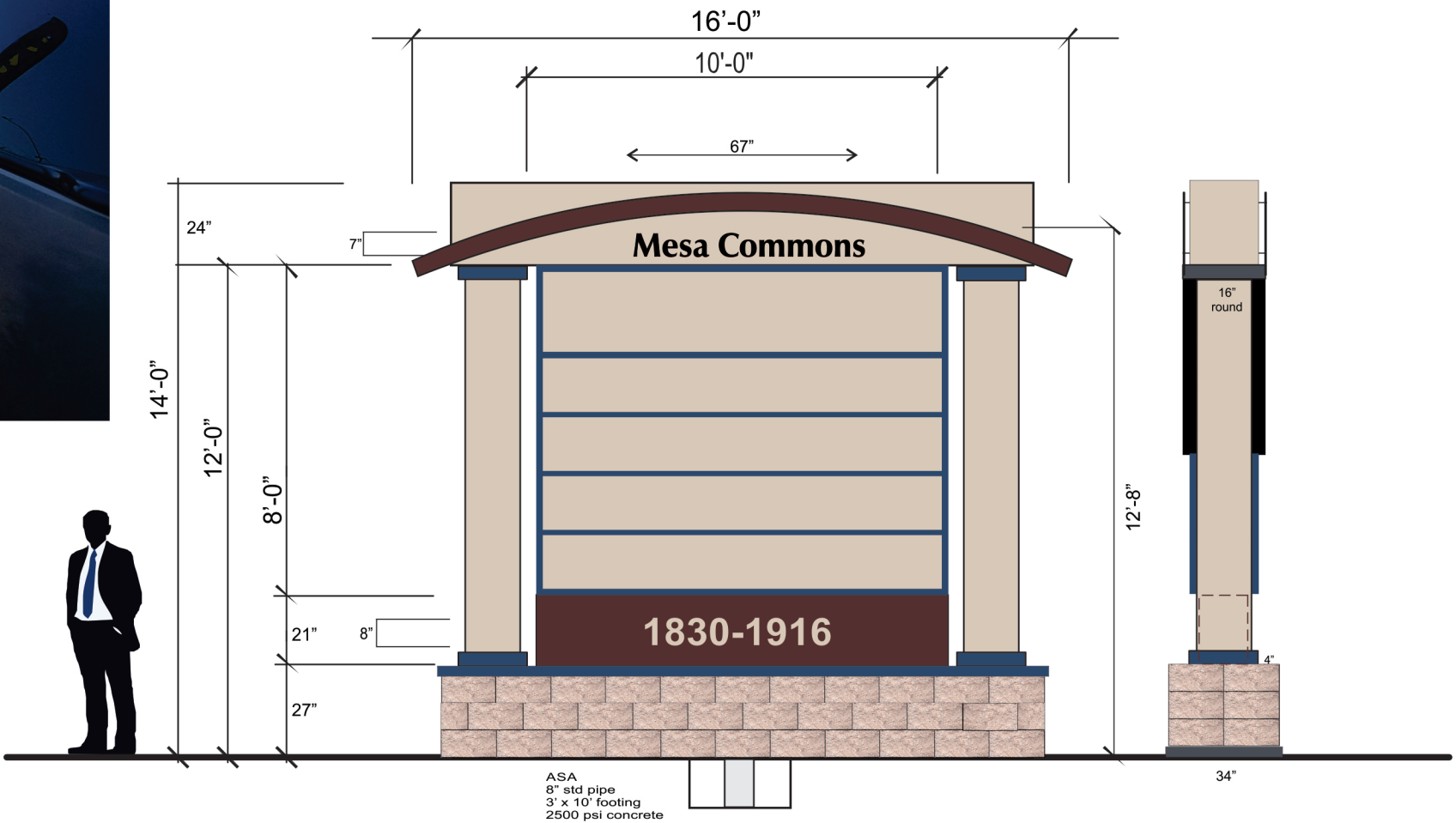
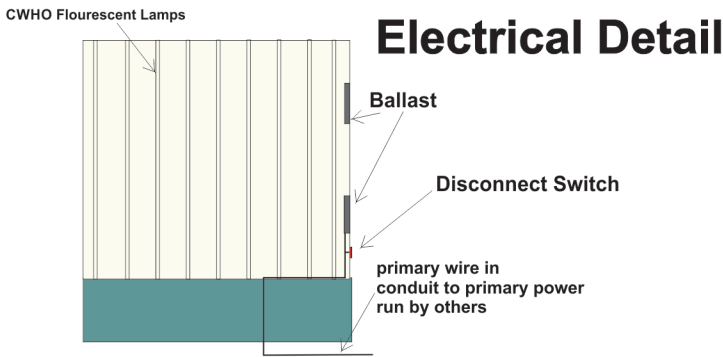
ROC#CR276279

480-525-2041



- Mfg and install:
- DOUBLE FACE MONUMENT SIGN
- aluminum construction
 - architectural top painted to center colors
 - center name to be FCO 3/8" aluminum letters painted black and non illuminated
 - architectural square side columns with reveals as drawn painted to match center colors
 - pole cover in aluminum construction with montex finish to faux masonry look
 - 8' x 10' double face cabinet sign with routed aluminum sign faces; divider bar separation
 - internal fluorescent lamp illumination
 - center pole mount
 - remove existing sign and dispose of

14' tall from sidewalk level



Project Name: Mesa Commons		CONTACT:	
SCALE(S):	ELEVATION:	ARTWORK DATE: 3-31-17	DATE OF APPROVAL:
1/2" = 1' - 0"	picture not to scale	APPROVAL SIGNATURE:	

*This sign design is the property of The Sign Company of Arizona, LLC and any portions or design elements may not be reproduced without prior written consent!

THE

SIGN

COMPANY

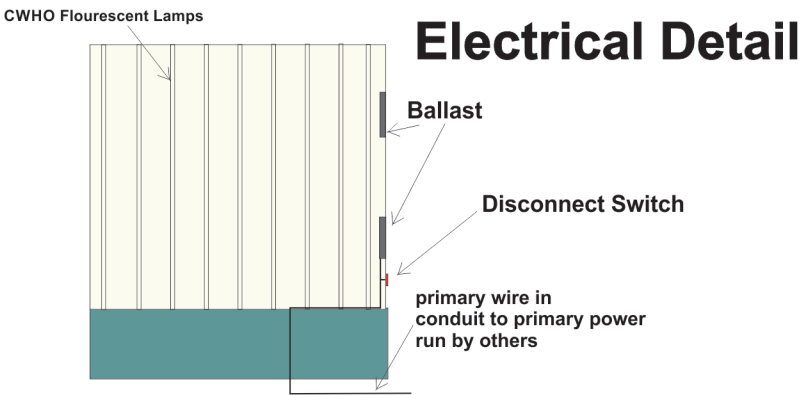
OF ARIZONA

3534 N. 42nd Ave
Phoenix, AZ 85019
ROC#CR276279

480-525-2041

Pad Tenant Monument Sign

- double face monument sign
- aluminum construction
- painted to match center colors and other signs
- internal fluorescent illumination
- 2" retainers
- routed aluminum sign faces with divider bar separation
- architectural top to match other signs
- split face block base with center pole mount



Pad Monument

