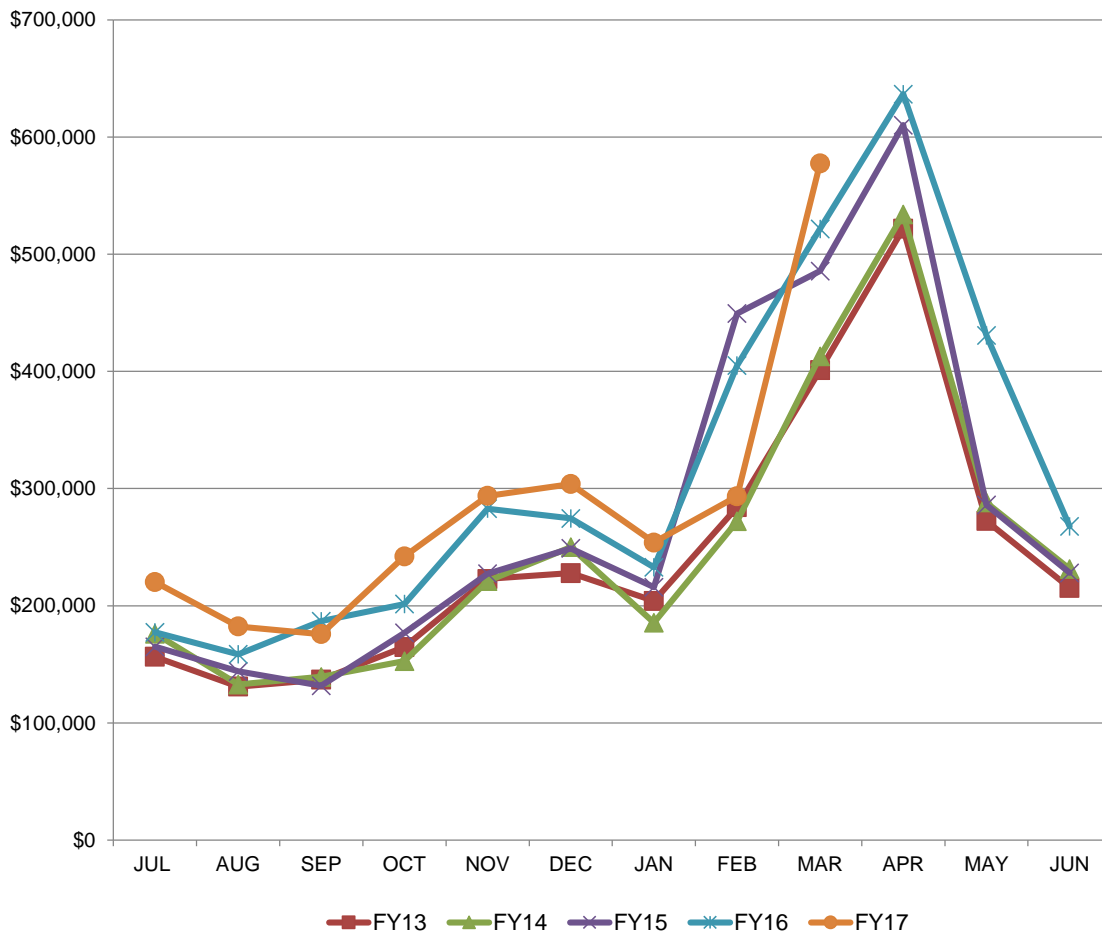


TRANSIENT LODGING TAX REVENUE SUMMARY

Licensing
(As reported to Visit Mesa)
(Based on Month Taxes are DUE)

<u>MONTH</u>	<u>FY13</u>	<u>FY14</u>	<u>FY15</u>	<u>FY16</u>	<u>FY17</u>	<u>VARIANCE FROM PREVIOUS FY</u>
JUL	\$156,428.92	\$176,162.18	\$164,984.00	\$177,360.88	\$220,284.01	24.2%
AUG	\$130,972.34	\$132,812.69	\$143,896.86	\$158,559.85	\$182,334.09	15.0%
SEP	\$136,948.69	\$139,279.61	\$131,613.63	\$186,883.73	\$175,802.64	-5.9%
OCT	\$164,788.01	\$152,788.58	\$176,923.12	\$201,502.06	\$242,079.59	20.1%
NOV	\$222,817.64	\$221,153.59	\$227,406.75	\$282,889.26	\$293,775.18	3.8%
DEC	\$227,772.15	\$250,093.93	\$249,008.48	\$274,510.39	\$303,859.72	10.7%
JAN	\$204,022.53	\$185,508.44	\$215,833.13	\$232,781.34	\$253,961.52	9.1%
FEB	\$284,155.45	\$272,234.62	\$449,411.92	\$405,135.12	\$293,465.96	-27.6%
MAR	\$401,036.26	\$412,753.16	\$485,676.11	\$521,607.71	\$577,397.44	10.7%
APR	\$521,760.10	\$534,013.27	\$610,183.37	\$636,634.24		
MAY	\$272,309.03	\$288,083.82	\$286,084.06	\$430,672.79		
JUN	\$215,231.39	\$231,390.77	\$228,029.63	\$267,839.08		
TOT	\$2,938,242.51	\$2,996,274.66	\$3,369,051.06	\$3,776,376.45	\$2,542,960.15	
AVG	\$244,853.54	\$249,689.56	\$280,754.26	\$314,698.04	\$282,551.13	6.7%



**The Transient Lodging Tax rate increased from 3% to 5% effective 1/1/11. Dollars are reported as collected. The percent change has been normalized for year to year comparison purposes.