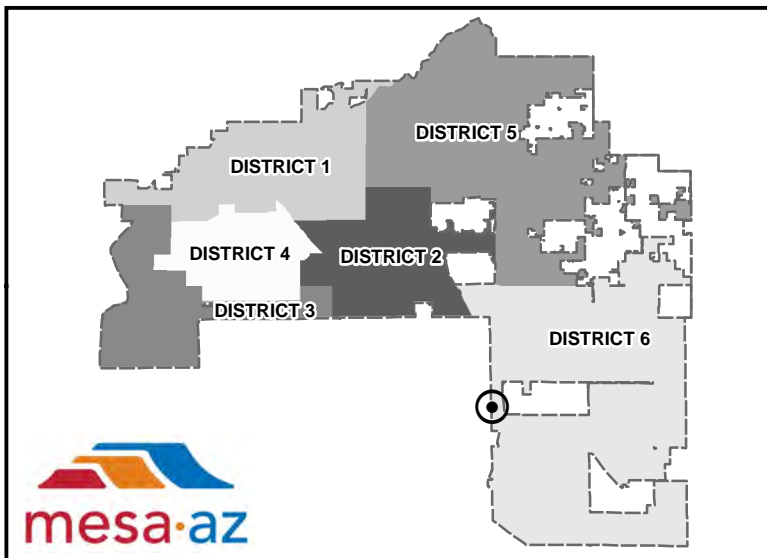
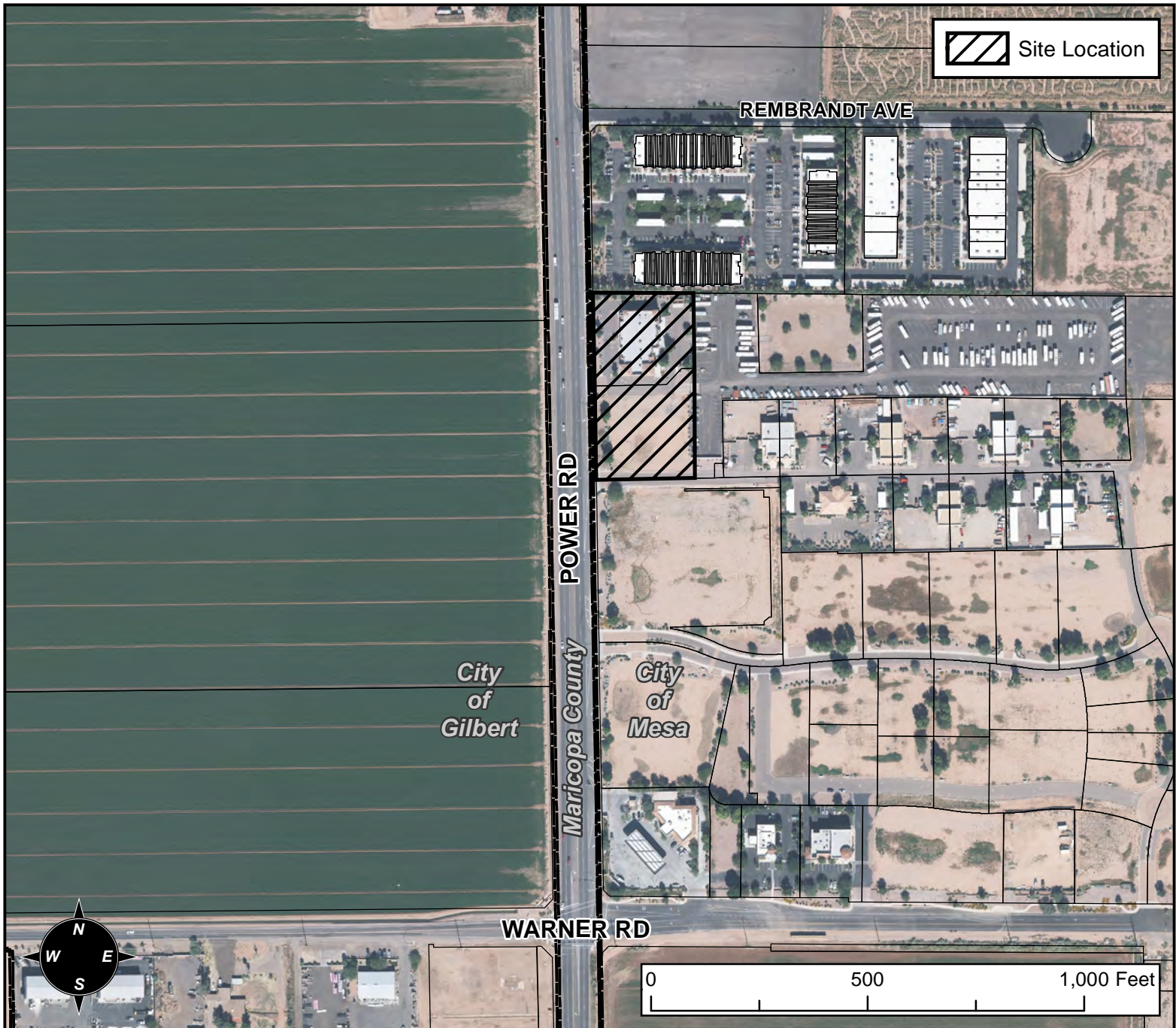


# PLANNING AND ZONING VICINITY MAP: Z16-059



## CASE DETAILS

### CASE:

Z16-059

PRE-PLAT : ☐

### SITE / ADDRESS:

4200 BLOCK OF SOUTH POWER ROAD (EAST SIDE) -  
(DISTRICT 6)

### REQUEST:

REZONING FROM LC-AF-PAD TO LC-AF-PAD; AND SITE  
PLAN MODIFICATION. THIS REQUEST WILL ALLOW  
FOR REDEVELOPMENT OF AN EXISTING COMMERCIAL  
CENTER AND A CAR WASH.