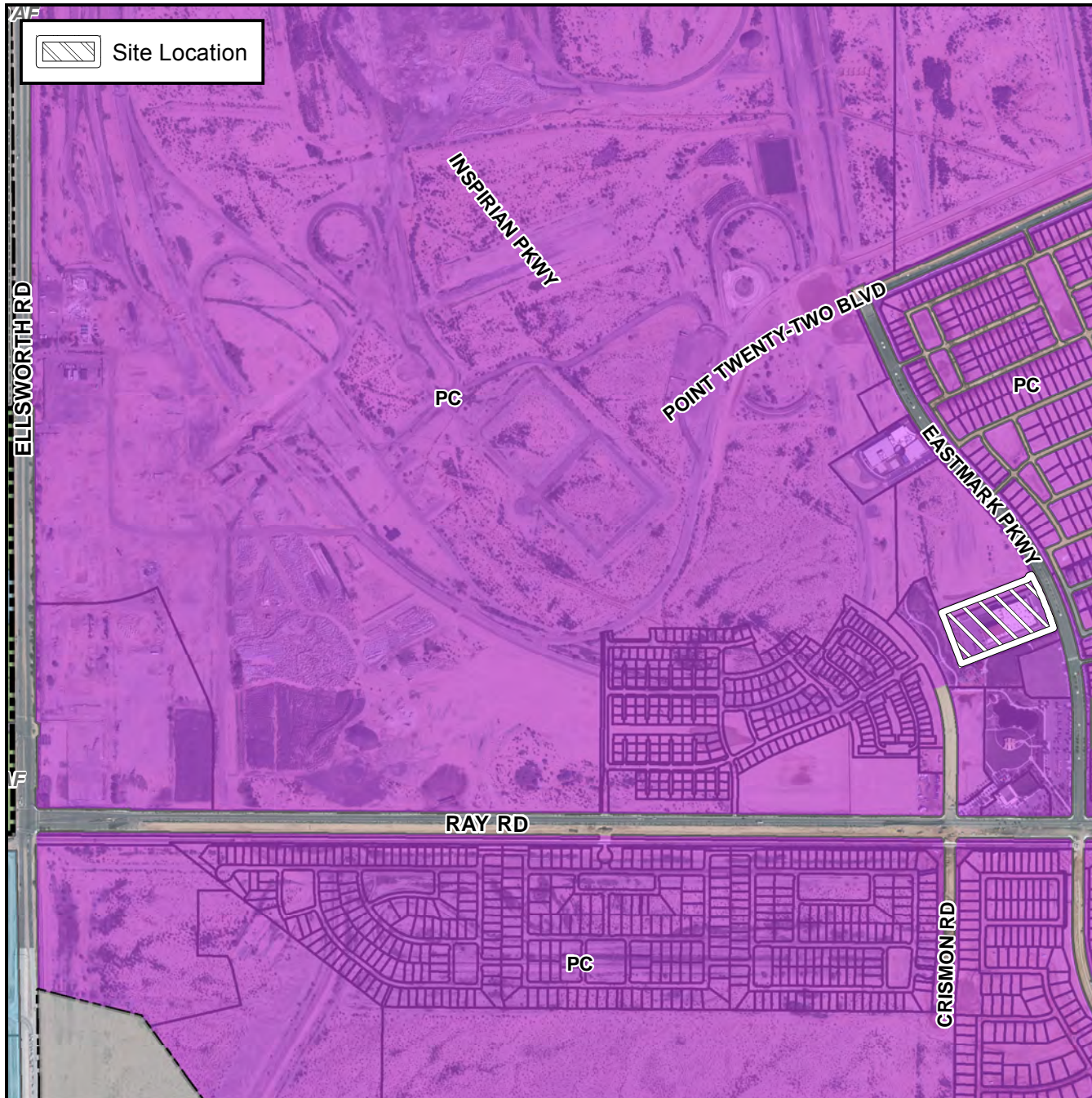


## Final Plat Vicinity Map



## Case Details

### Project:

Eastmark Lot 6 of 7-50 (Phase 2) Replat

### Language:

"Eastmark Lot 6 of 7-50 (Phase 2) Replat". (District 6). The 5000 block of South Eastmark Parkway. Located north and west of Ray and Signal Butte Roads. 1 PCD lot for a school. (5.4± acres) Basis Schools, Inc., owner; Kenneth P. Converse, Hoskin-Ryan Consultants, Inc., Surveyor.

