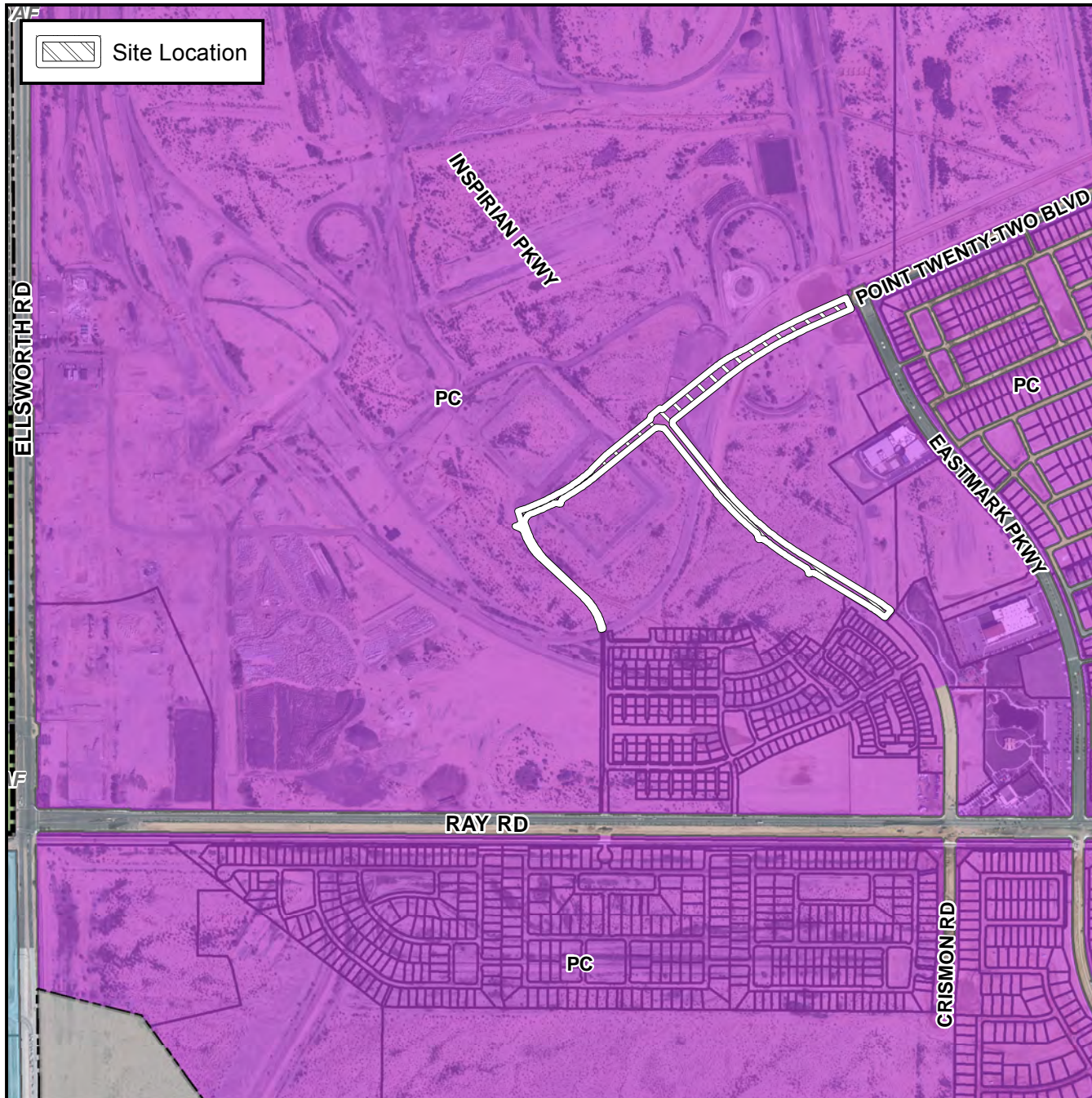


Final Plat Vicinity Map



Case Details

Project:

DU3/4 East Phase 2 Infrastructure

Language:

"DU3/4 East Phase 2 Infrastructure". (District 6). The 4800-5000 blocks of South Copernicus, the 9600-9900 blocks of East Point Twenty-Two Boulevard and the 4800-5000 blocks of South Inspirian Parkway. Located north and east of Ray and Ellsworth Roads. 1 PCD landscape tract. (8.6± acres) DMB Mesa Proving Grounds, LLC, owner; Raymond S. Munoz III, EPS Group, Surveyor.

