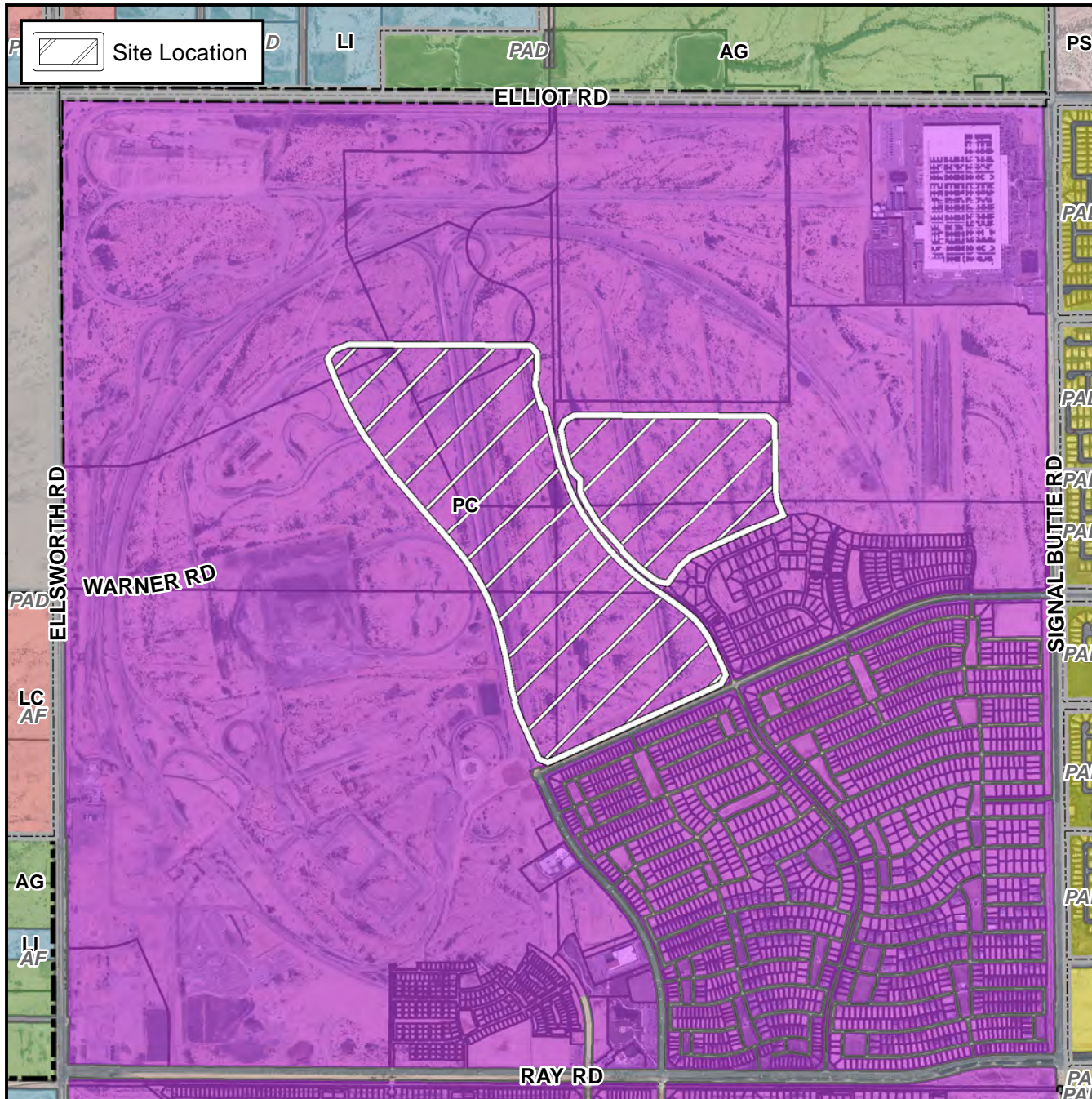


Preliminary Plat Vicinity Map



Case Details

Project:

Eastmark DU6S Parcels 6-4 to 6-6 and 6-9 to 6-23

Site / Address:

The 10000 to 10800 block of East Point Twenty-Two Boulevard (north side) and the 9600 to 10400 block of East Elliot Road (south side). Located between Point Twenty-Two Boulevard and Elliot Road and between the Eastmark Parkway alignment and Signal Butte Road. (252.4± acres).



0 2000
Feet

