



SUSTAINABILITY & TRANSPORTATION COMMITTEE

April 13, 2017

The Sustainability & Transportation Committee of the City of Mesa met in the lower level meeting room of the Council Chambers, 57 East 1st Street, on April 13, 2017 at 9:42 a.m.

COMMITTEE PRESENT

Kevin Thompson, Chairman
David Luna
Jeremy Whittaker

COMMITTEE ABSENT

None

STAFF PRESENT

Kari Kent
Dee Ann Mickelsen
Bill Taebel

1. Items from citizens present.

There were no items from citizens present.

2-a. Hear a presentation, discuss and provide a recommendation relating to the modification of the requirements in Section 3 of the Terms and Conditions for the Sale of Utilities to allow for the connection of an approximate 2,600 square foot limited-use building at 12347 South Sossaman Road, a property located outside the Mesa city limits.

Development Services Department Director Christine Zielonka introduced Deputy Director of Development Planning/Permitting Beth Hughes-Ornelas who displayed a PowerPoint presentation. **(See Attachment 1)** Ms. Hughes-Ornelas stated that this is related to the modification of the requirements in Section 3 of the Terms and Conditions for the Sale of Utilities to allow for the connection of an approximate 2,600 square foot limited-use building.

Ms. Hughes-Ornelas presented a request to Council on a property located in Maricopa County, for the development of a soccer complex (See Page 2 of Attachment 1):

- 24" City of Mesa water line exists on S. Sossaman Road adjacent to the parcel
- Requesting connection of 1" water meter
- 1" meter will be used to serve limited use building only
- Turf at the property is watered from wells located onsite

Ms. Hughes-Ornelas stated that the owner of the property is present to address any questions. She displayed maps that illustrates the City of Mesa's waterline adjacent to Sossaman Road. (See Pages 3 and 4 of Attachment 1)

Ms. Hughes-Ornelas explained that the request would allow the property to be served while remaining in the County, continue to develop under the County's requirements, and a modification to the terms and conditions, which require Council approval. She requested approval to forward to Council for consideration.

In response to a question posed by Chairman Thompson, Ms. Zielonka clarified that the request relieves the owner of the responsibility to conduct off-site improvements and allows connection to the 1" meter for purposes of serving approximately a 2,600-sq. ft. restroom facility, associated with the soccer complex.

In response to questions posed by Committeemember Luna, Carl Bloomfield, P.E., representative of the NFSC Striker Soccer Club, stated that the facility is for a private soccer club with 320 active participants. He stated that the complex has eight soccer fields, 500 parking spaces to be paved, with completion by August, 2017.

In response to a question from Committeemember Luna, Ms. Hughes-Ornelas explained that in the past Council has approved connection to existing utilities with property that is located within the County. She confirmed that staff is recommending approval of the connection.

It was moved by Committeemember Luna, seconded by Committeemember Whittaker, that staff's recommendation regarding the modification of the requirements in Section 3 of the Terms and Conditions for the Sale of Utilities to allow for the connection of an approximate 2,600 square foot limited-use building at 12347 South Sossaman Road, a property located outside the Mesa city limits be forwarded to the full Council with a recommendation for approval.

Carried unanimously.

Chairman Thompson thanked staff for the presentation.

3. Adjournment.

Without objection, the Sustainability and Transportation Committee Meeting adjourned at 9:47 a.m.

I hereby certify that the foregoing minutes are a true and correct copy of the minutes of the Sustainability & Transportation Committee meeting of the City of Mesa, Arizona, held on the 13th day of April, 2017. I further certify that the meeting was duly called and held and that a quorum was present.

DEE ANN MICKELSEN, CITY CLERK



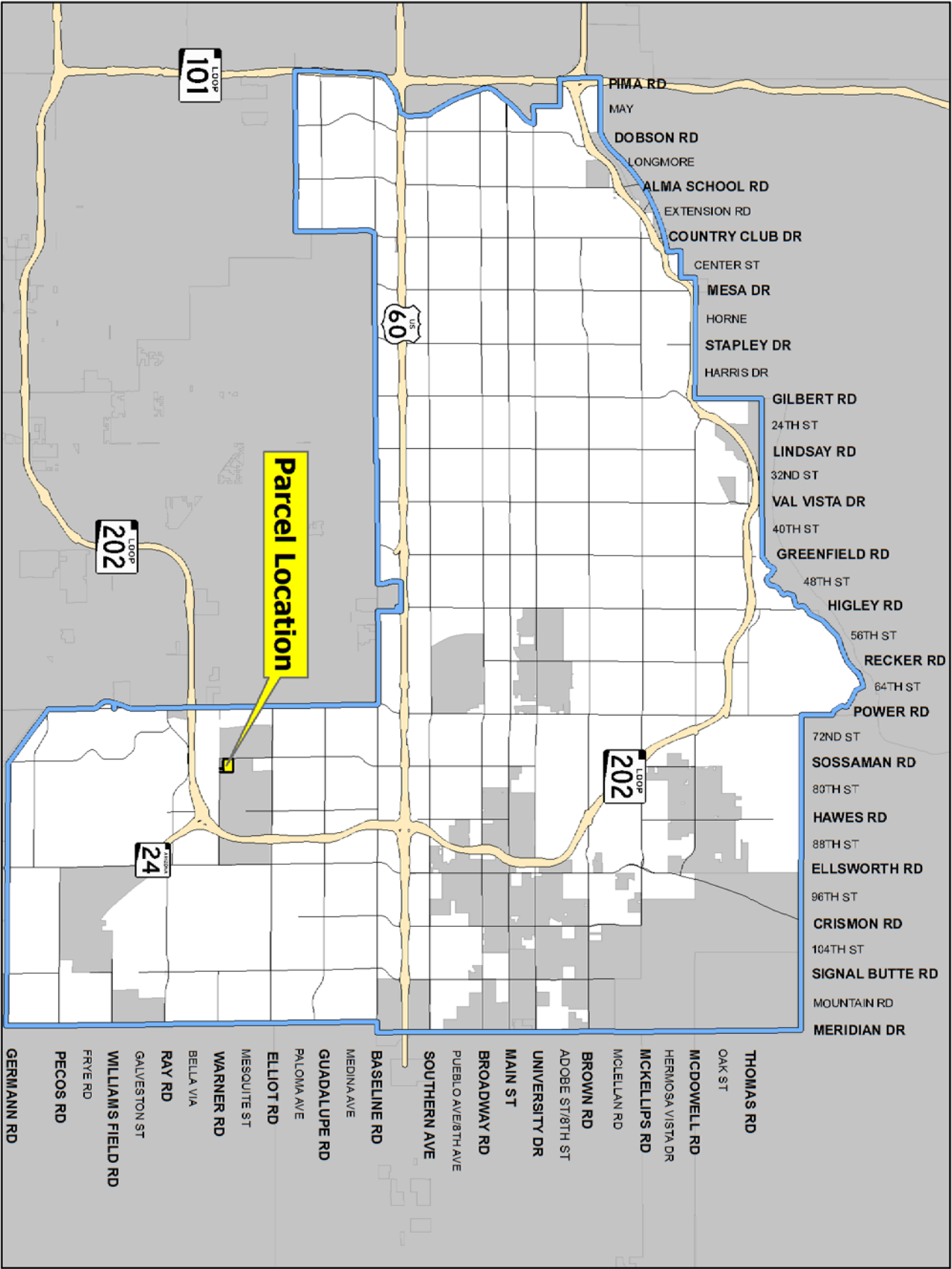
Request for modification of the requirements to
allow connection of limited use building at

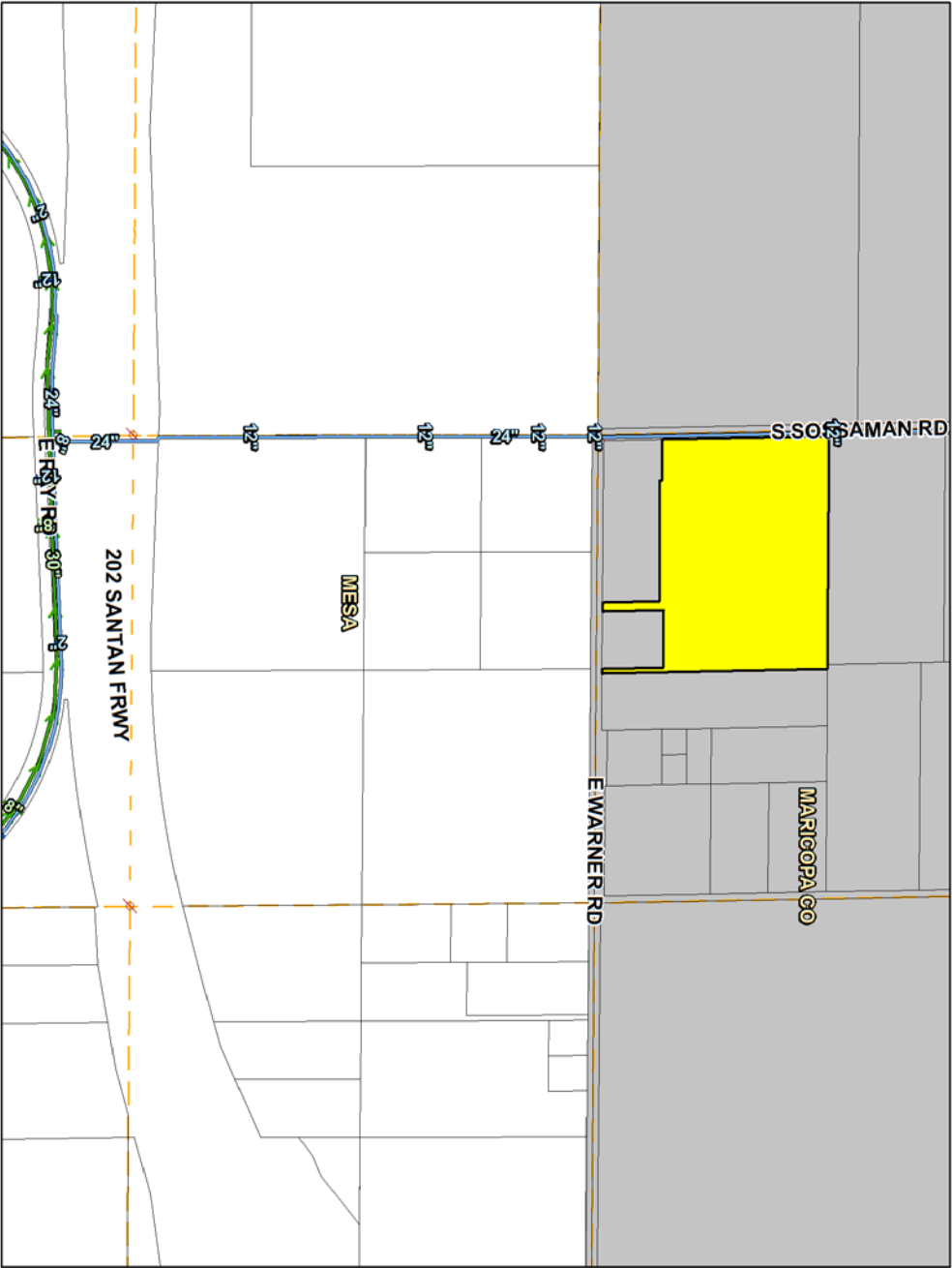
12347 S. Sossaman Road,
a property located outside Mesa City Limits

Sustainability &
Transportation Committee
April 13, 2017

Request

- ☐ Property is located in Maricopa County, Outside Mesa City Limits
- ☐ 24” City of Mesa water line exists in S. Sossaman Road directly adjacent to parcel requesting service
- ☐ Requesting connection of 1” water meter to serve building
- ☐ 1” meter will be used to serve limited use building only
- ☐ Turf at the property is watered from wells located onsite





Summary & Questions
