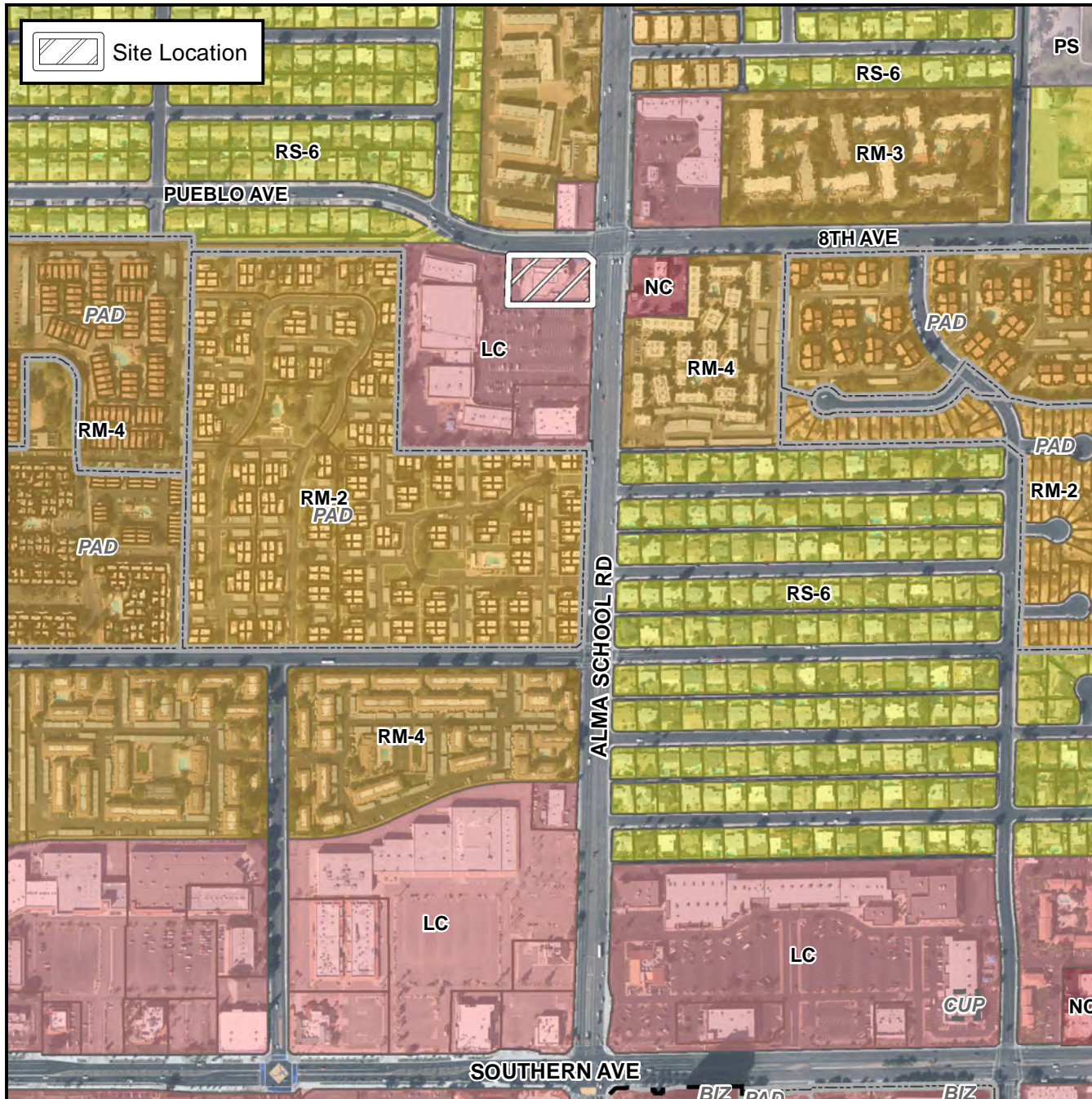


Board of Adjustment Vicinity Map: BA17-025

Case Details



Case:

BA17-025

Site / Address:

808 S Alma School Rd - (District 3)

Request:

Requesting: 1) a Substantial Conformance Improvement Permit (SCIP) to allow modifications to development standards; and 2) modification of a Special Use Permit (SUP); and 3) a Special Use Permit (SUP) for a modification to an existing Comprehensive Sign Plan (CSP); all to allow an expansion of an existing carwash in the LC District.

