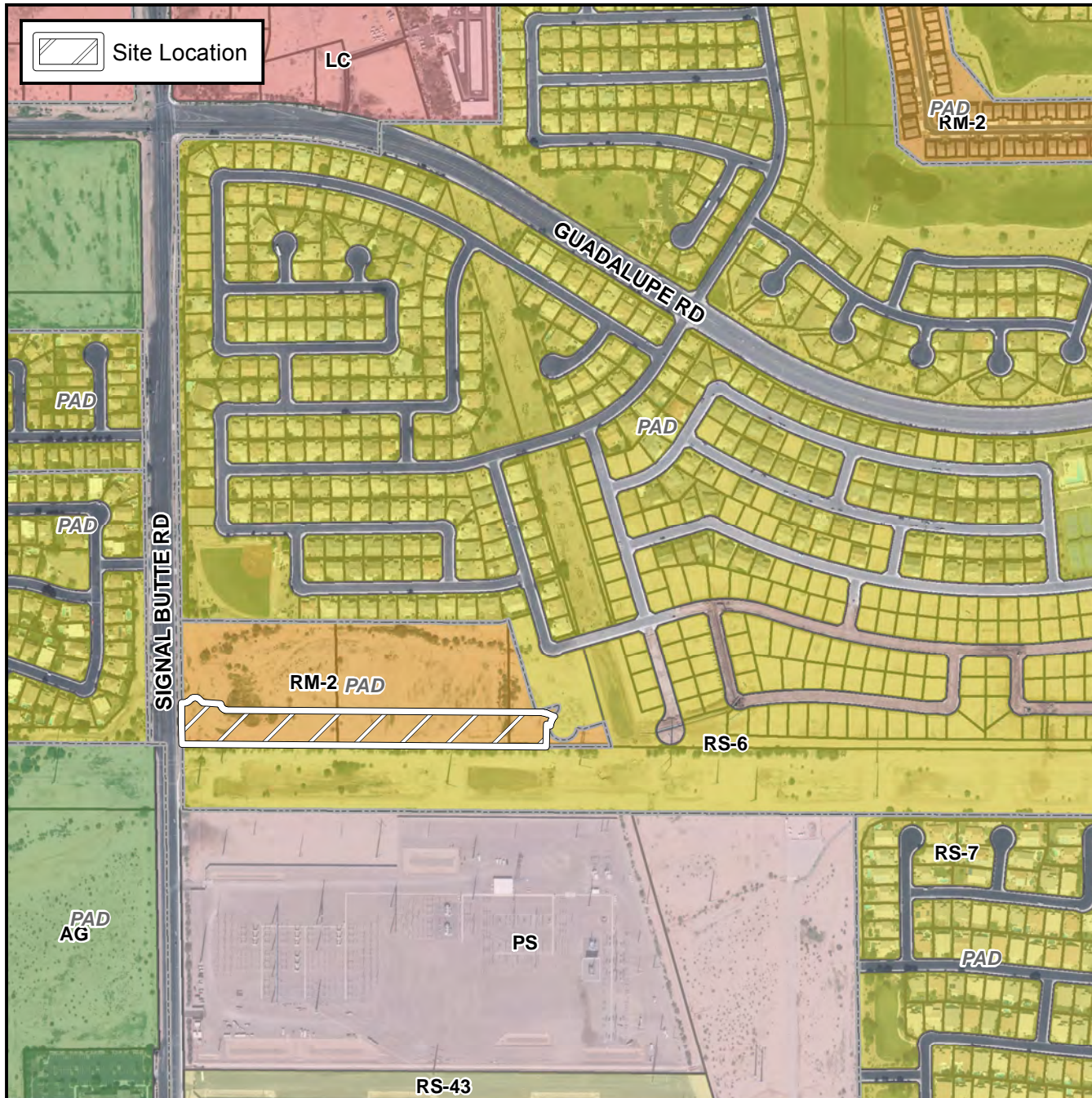


# Final Plat Vicinity Map



## Case Details

### Project:

Desert Trails Condominium

### Language:

"Desert Trails Condominium". (District 6). The 3100 block of South Signal Butte Road (east side). Located south of the southeast corner of Signal Butte and Guadalupe Roads. 34 RM-2 PAD multi-residence units. (4.34 ± acres). Craig M. Ahlstrom, Desert Trails Condominium, LLC, owner; Jeff Giles, Clouse Engineering, Inc., Engineer.

