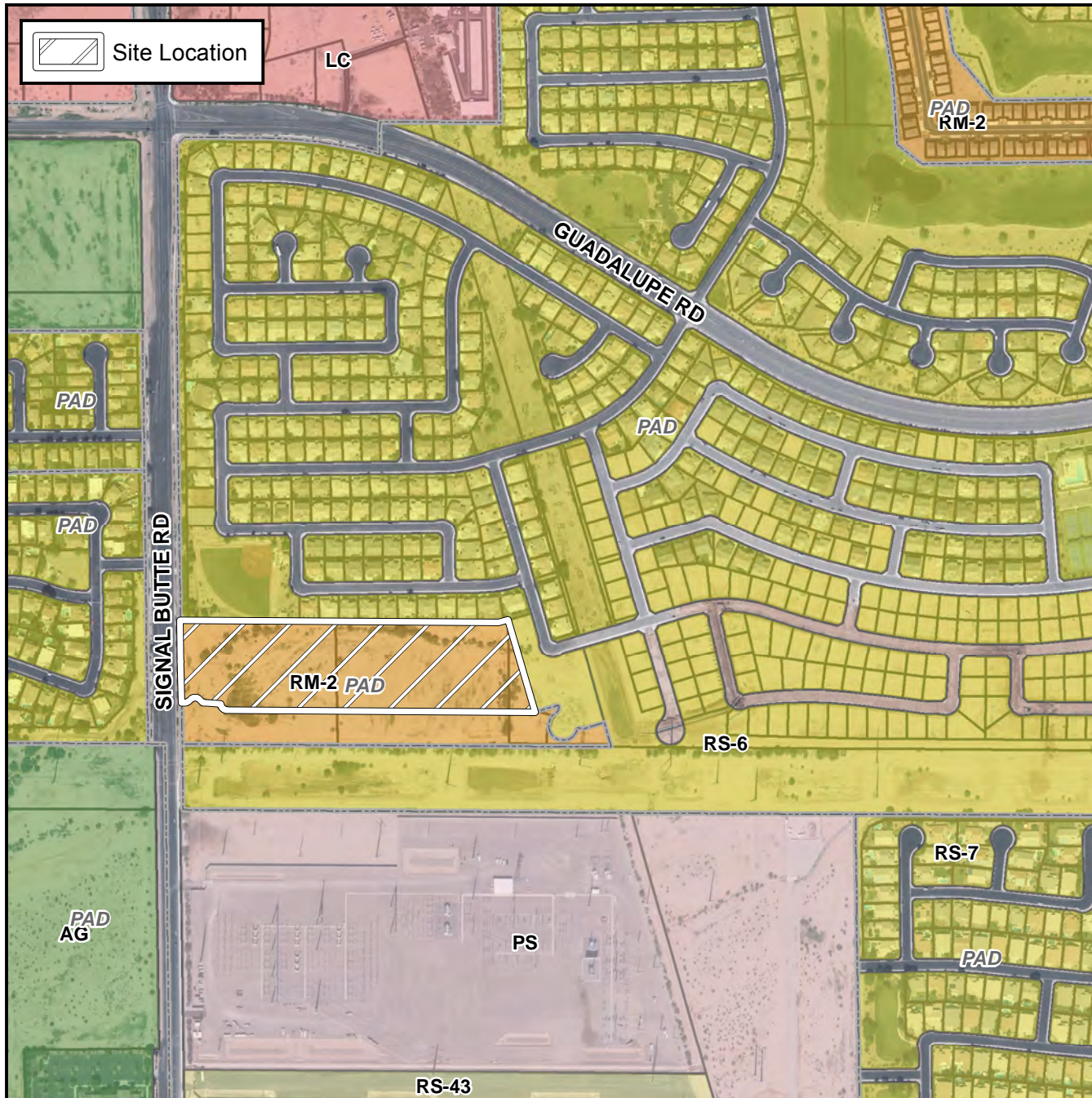


Final Plat Vicinity Map



Case Details

Project:

Springs Condominium Homes

Language:

"Springs Condominium Homes". (District 6). The 3100 block of South Signal Butte Road (east side). Located south of the southeast corner of Signal Butte and Guadalupe Roads. 86 RM-2-PAD-PAD multi-residence units. (10.19 ± acres). Craig M. Ahlstrom, Springs Condominium Homes, Inc., owner; Jeff Giles, Clouse Engineering, Inc., Engineer.

