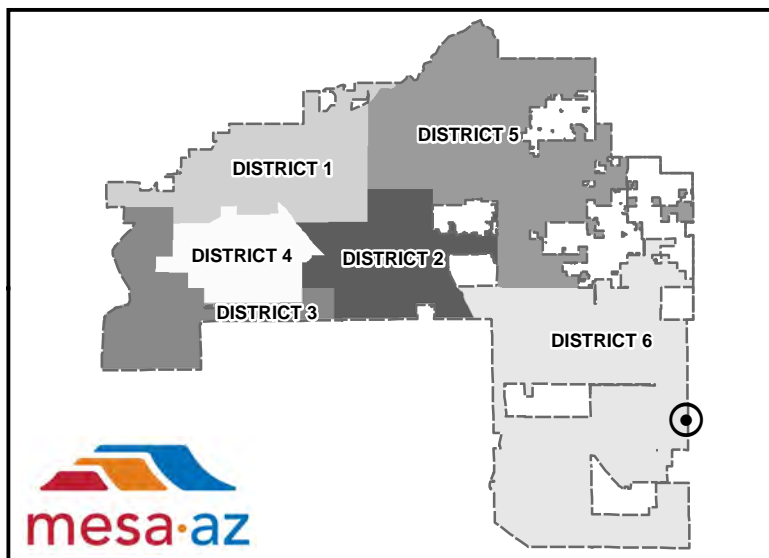
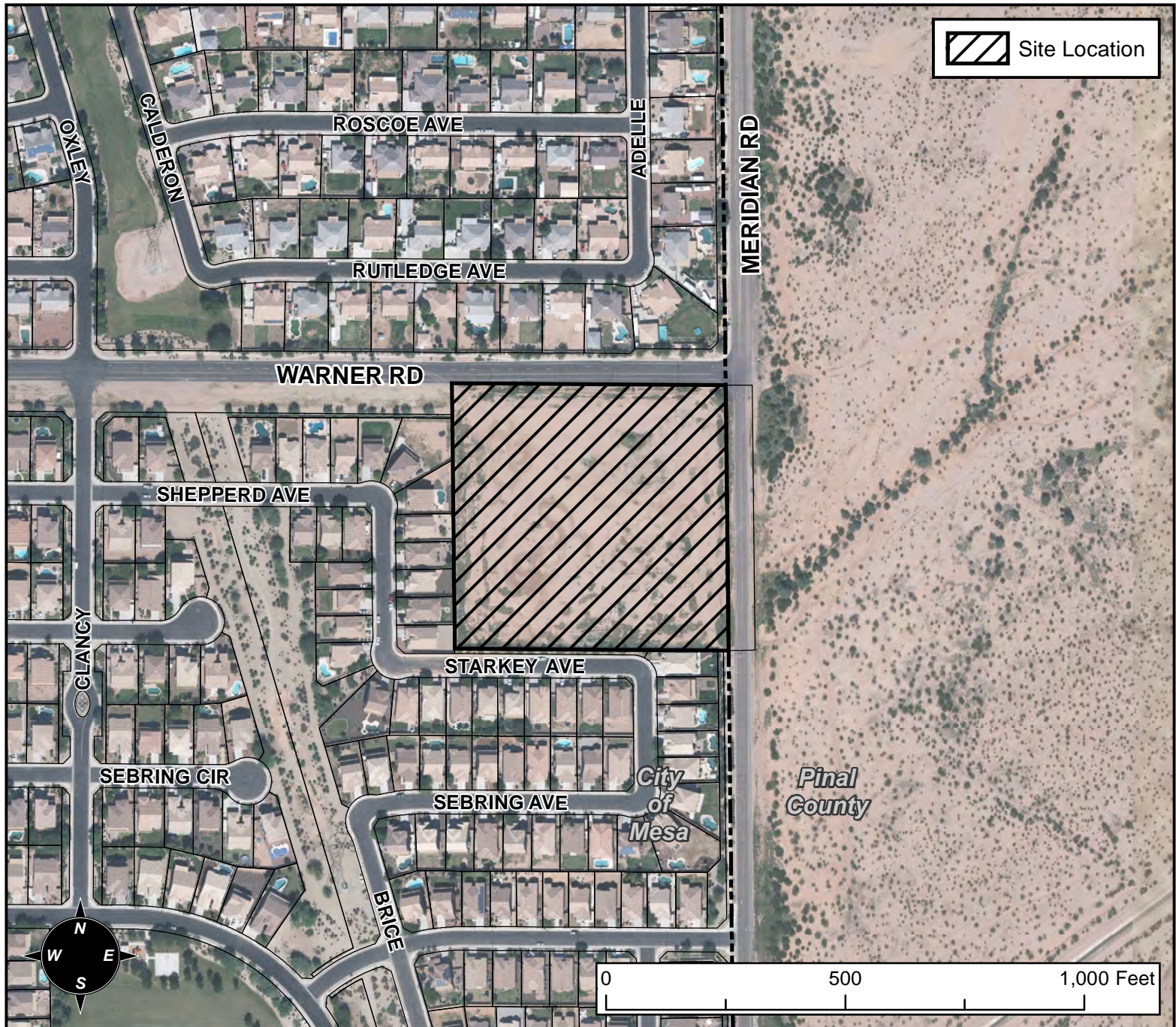


# PLANNING AND ZONING VICINITY MAP: Z16-056



## CASE DETAILS

### CASE:

Z16-056

PRE-PLAT : ☒

### SITE / ADDRESS:

THE 11500 THROUGH 11600 BLOCKS OF EAST WARNER ROAD (SOUTH SIDE). DISTRICT 6. LOCATED AT THE SOUTHWEST CORNER OF WARNER ROAD AND MERIDIAN ROAD.

### REQUEST:

REZONE FROM LC TO RSL-3.0; AND SITE PLAN REVIEW. THIS REQUEST WILL ALLOW THE DEVELOPMENT OF A SINGLE RESIDENCE SUBDIVISION.