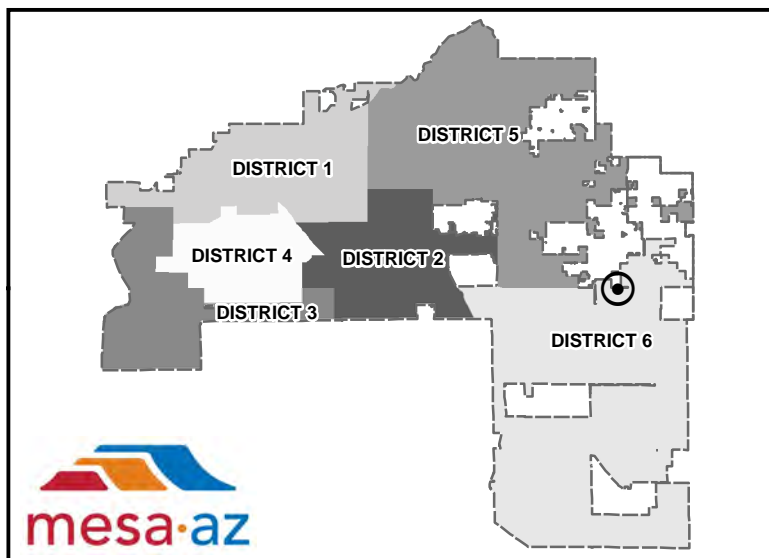
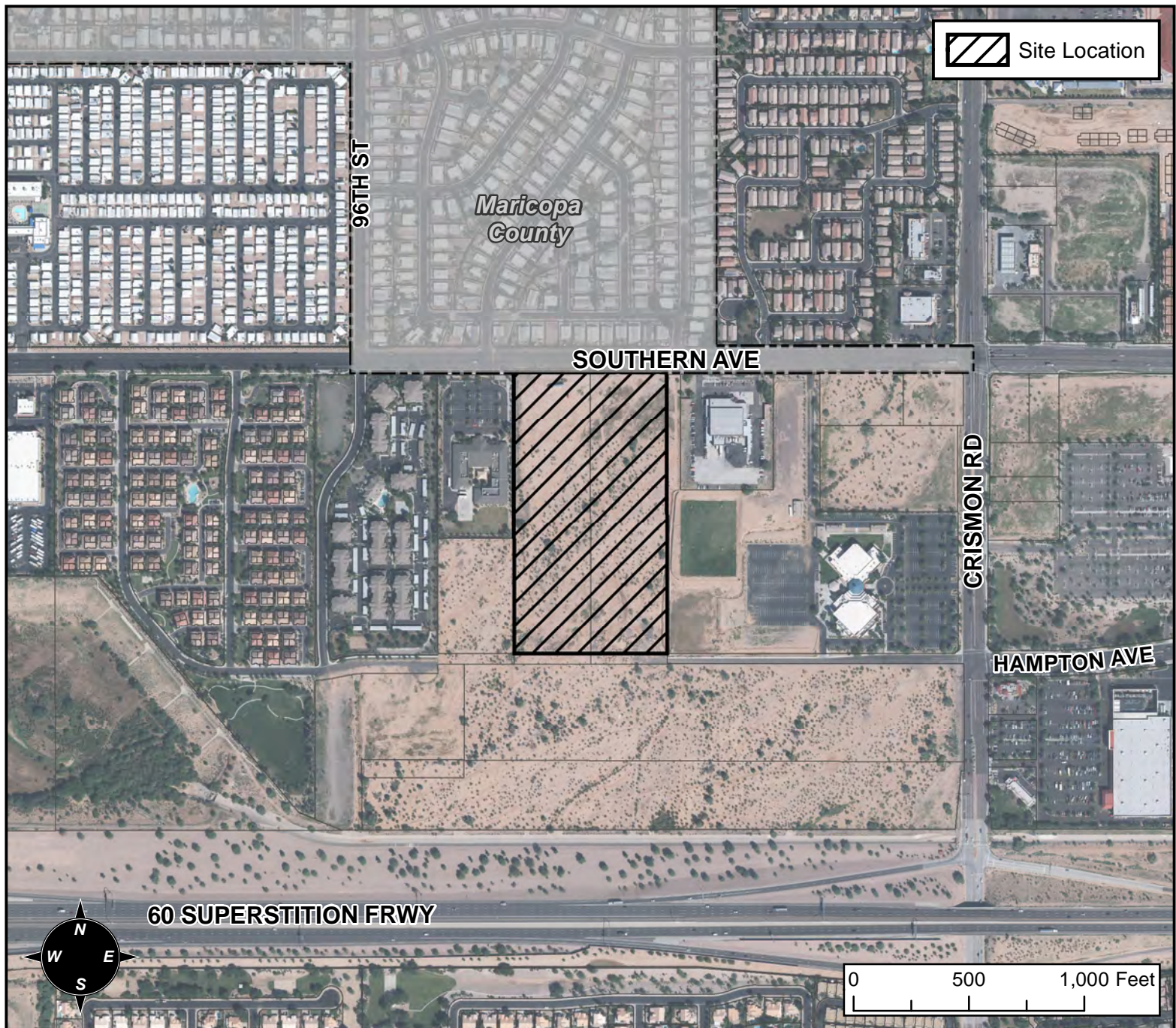


PLANNING AND ZONING VICINITY MAP: Z17-005



CASE DETAILS

CASE:

Z17-005

PRE-PLAT : ☐

SITE / ADDRESS:

THE 9700 THROUGH 9800 BLOCKS OF EAST SOUTHERN AVENUE (SOUTH SIDE) AND THE 9700 THROUGH 9800 BLOCKS OF EAST HAMPTON AVENUE (NORTH SIDE). DISTRICT 6.

REQUEST:

REZONE FROM RS-43 TO PEP AND RM-2-PAD; AND SITE PLAN REVIEW. THIS REQUEST WILL ALLOW FOR A MULTI-RESIDENTIAL DEVELOPMENT AND A FUTURE OFFICE DEVELOPMENT.