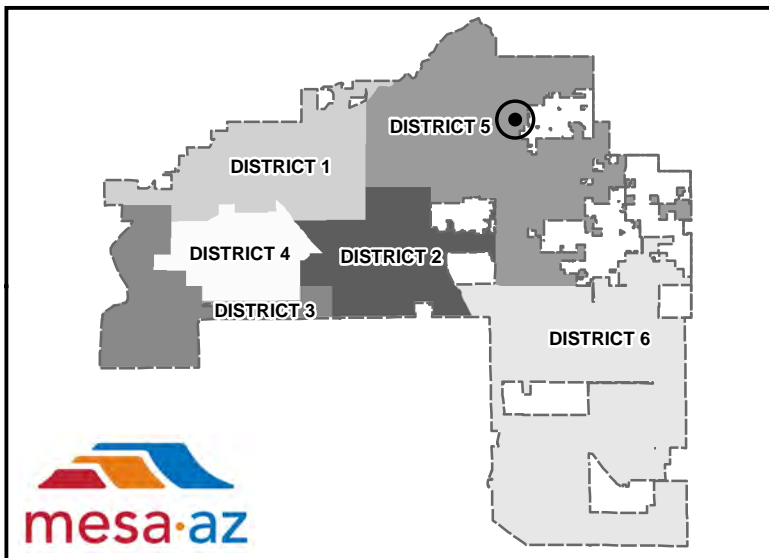
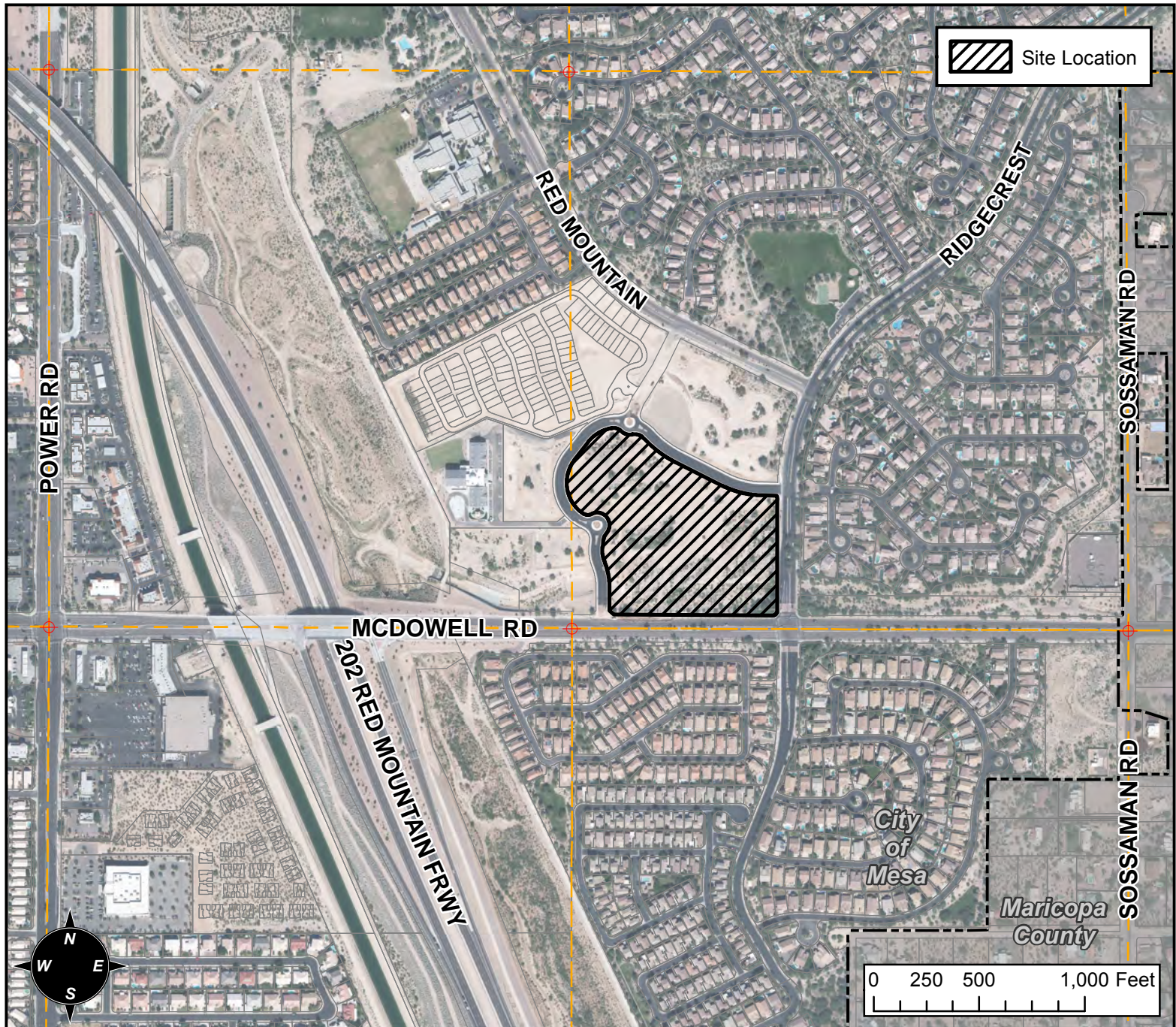


MAP OF DEDICATION VICINITY MAP



MOD DETAILS

PROJECT:

MOD FOR CANYON WINDS SENIOR LIVING

LANGUAGE:

"MAP OF DEDICATION - FOR CANYON WINDS SENIOR LIVING". (DISTRICT 5). THE 7200 – 7300 BLOCKS OF EAST MCDOWELL ROAD (NORTH SIDE). LOCATED EAST OF POWER ROAD ON THE NORTH SIDE OF MCDOWELL ROAD. (50.71 ± ACRES). CANYON WINDS RETIREMENT, LLC, OWNER; JAY EDWARD MIHALEK, JMA ENGINEERING CORPORATION, SURVEYOR.