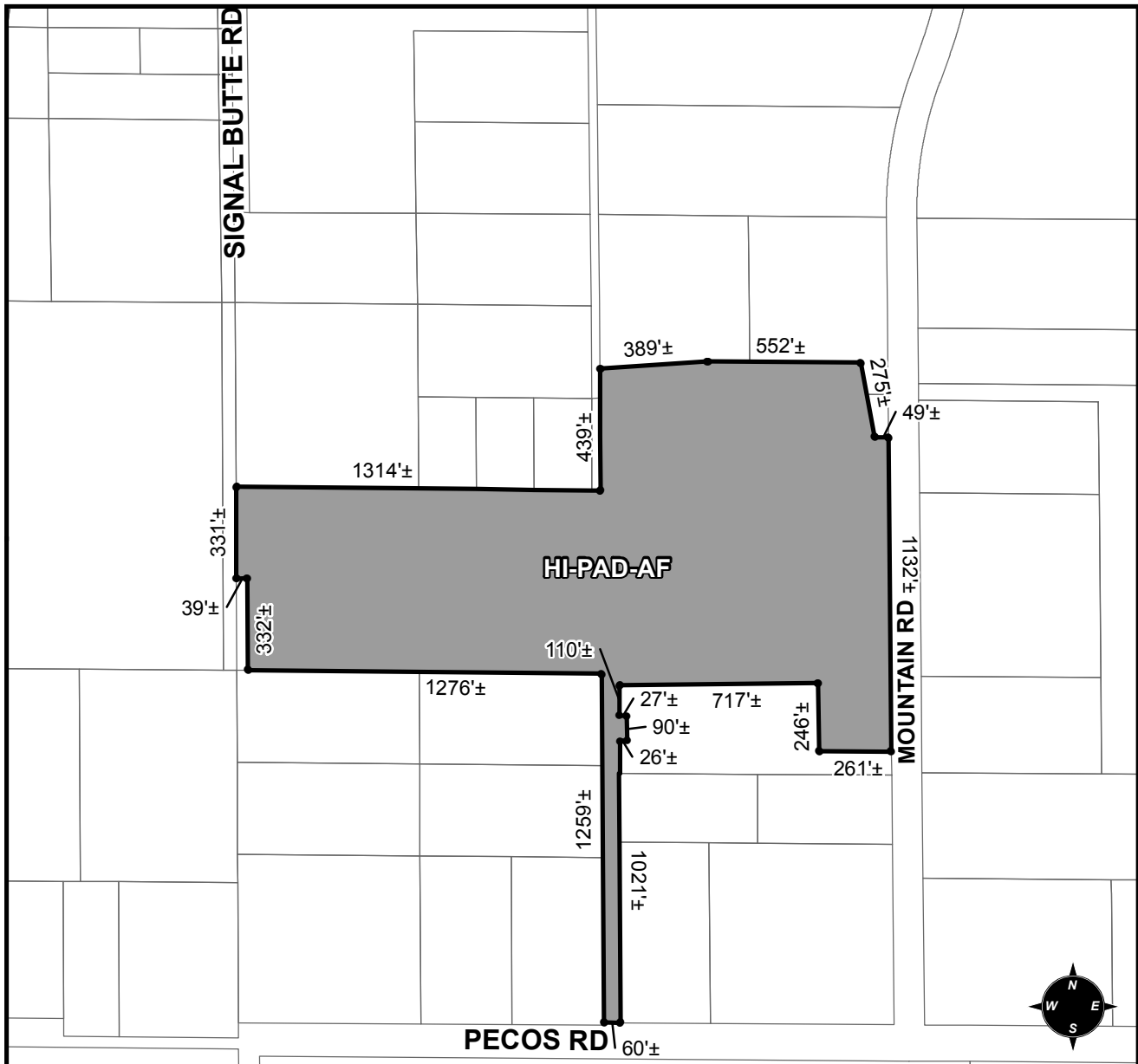




OFFICIAL SUPPLEMENTARY ZONING MAP AMENDING THE CITY OF MESA ZONING MAP



CASE: Z17-002

ACREAGE: 50.12±

REQUEST: REZONE FROM AG TO HI-PAD-AF (20± ACRES); AND REZONE FROM GI-CUP-AF TO HI-PAD-AF (24.3± ACRES); AND REZONE HI-AF TO HI-PAD-AF (5.82± ACRES)

ORDINANCE: _____

Please be advised that the attached zoning changes were approved by the Mesa City Council on _____, 2017 by Ordinance # _____. If you have any questions concerning these changes, contact the City of Mesa Planning Division at 480-644-2385.

MAYOR

ATTEST: _____ DATE: _____

CITY CLERK