

COUNCIL MINUTES

January 19, 2017

The City Council of the City of Mesa met in a Study Session in the lower level meeting room of the Council Chambers, 57 East 1st Street, on January 19, 2017 at 7:30 a.m.

COUNCIL PRESENT

Mark Freeman
Christopher Glover
David Luna
Jeremy Whittaker
Ryan Winkle

COUNCIL ABSENT

John Giles
Kevin Thompson

OFFICERS PRESENT

Christopher Brady
Dee Ann Mickelsen
Jim Smith

Councilmember Luna excused Mayor Giles and Councilmember Thompson from the entire meeting.

Councilmember Luna welcomed new Councilmembers Mark Freeman, Jeremy Whittaker, and Ryan Winkle.

1. Review items on the agenda for the January 23, 2017 Regular Council meeting.

All of the items on the agenda were reviewed among Council and staff and the following was noted:

Conflict of interest: None.

Items deleted from the agenda: 7-b.

Items removed from the consent agenda: None.

2-a. Hear a presentation and discuss an update of the Parks and Recreation Bond Program.

Parks, Recreation and Community Facilities Director Marc Heirshberg displayed a PowerPoint presentation (**See Attachment 1**) related to the Parks and Recreation Bond Program Update and 2017 Scheduled Projects.

Mr. Heirshberg reported that Kleinman Park Renovation is a 1.3 million dollar project and construction will occur from March 2017 through September 2017. He listed the major elements of the project, and noted that half of the playground is being completed with funds allocated under the Community Development Block Grant (CDBG). (See Page 2 of Attachment 1)

Mr. Heirshberg commented that the Pioneer Park renovation will be similar to Riverview Park with unique playground equipment. He stated that construction is scheduled from May 2017 through December 2017 and opening to coincide with the Merry Main Street activities and listed the major elements to be completed. (See Pages 3 through 5 of Attachment 1) He added that one of the unique features of this park is the large, mature trees, so the playground equipment will interact with the trees with heights up to 35 feet. He highlighted additional features of the park including an elevated walkway and shade areas.

In response to a question posed by Councilmember Freeman, Mr. Heirshberg clarified that staff is working with the Save the Train Committee to restore the train, provide viewing areas, interactive signage, and provide access inside the cab. He noted that the train can no longer be utilized as a play feature due to Americans with Disabilities Act (ADA) regulations. He clarified that the Save the Train Committee will manage the train restoration.

Mr. Heirshberg highlighted Eagles Park and Community Center and explained that this is a two phase project. He stated that Phase One is the repurposing of the old gym building into a 27,000 sq. ft. Community Center. He commented that bids will be sent out no later than next week with completion by August 2017. He reported that Phase Two is the park restoration and listed the major elements to be completed. He added that the storm water retention will address the flooding that occurs in the neighborhood off of Solomon Street. (See Pages 6 and 7 of Attachment 1)

Mr. Heirshberg stated that the Greenfield Park renovation is currently underway and will include a lake for an urban fishing program, which is being done in partnership with the Arizona Game and Fish Department. He clarified that the project completion date is September 2017 and listed the major elements including the exercise and shaded playground equipment to be installed. (See Pages 8 and 9 of Attachment 1)

Mr. Heirshberg reported that the Signal Butte and Elliott Park is a 1.4 million dollar project with design initiated. He continued by saying that the first phase will include a parking lot and trail system between Fire Station 214 and the Water Treatment Facility that is currently under construction. He remarked that construction completion will be in Spring 2018. (See Page 10 of Attachment 1)

Mr. Heirshberg highlighted the Rio Salado Pathway and the Stadium Connector Pathway. He pointed out that the Rio Salado Pathway will connect to the Stadium Connector Pathway on the east and under the 202 on the west to the Tempe trail system. He listed the major elements for both pathways. (See Pages 11 and 12 of Attachment 1)

Mr. Heirshberg explained that the South East Mesa Pathway bids will be sent out soon with completion planned for November 2017. He stated that the pathway is a two phase project with Phase One running from Baseline Road to Guadalupe Road and Phase Two from Guadalupe Road to Elliot Road to eventually connect with the existing Western Area Power Administration (WAPA) pathway. (See Page 13 of Attachment 1)

In response to a question posed by Councilmember Whittaker, Mr. Heirshberg clarified that Greenfield Park completion is on schedule with a September 2017 completion date. He added that the completion date depends on how quickly the grass grows over the summer months.

In response to questions from Councilmember Freeman, Mr. Heirshberg clarified that there are five Park Rangers that cover over 205 parks and basins. He stated that staff is working with the City Manager's office to find opportunities to add additional Park Rangers, and that they have

converted some administration positions to field positions for additional Park Ranger staff, when needed. He pointed out that Park Rangers work with the Police Department (PD) and that PD assists when necessary. He explained that improving the parks creates positive activity which in turn drives out the loitering. He confirmed that the work hours of the Park Rangers is from 6:30 a.m. until mid-afternoon with evening Park Rangers working from 2:00 p.m. through 2:00 a.m. He stated that the downtown parks are more challenging for Park Rangers and that seasons bring different challenges, for example, Riverview Park could use a full-time Park Ranger at this time of the year.

In response to a question posed by Councilmember Whittaker, City Attorney Jim Smith explained that the playground equipment height was a liability concern when Riverview Park was built and stated that nothing has materialized in that regard.

Mr. Heirshberg clarified that the American Society for Testing and Measurement (ASTM) have specific height and surface requirements, and fall zones. He noted that the City has a staff member who is a Certified Playground Safety Inspector and that when unique playground equipment is installed, the installer inspects and certifies the equipment, as well as the Certified Playground Safety Inspector, with a final inspection completed by a third party company to verify that the equipment complies with the ASTM standards. He added that playground equipment manufacturers understand the need for safe equipment since they are also liable for the equipment.

Councilmember Luna thanked staff for the presentation and for their efforts with the Mesa parks program.

3. Information pertaining to the current Job Order Contracting projects.

(This item was not discussed by the Council.)

4. Acknowledge receipt of minutes of various boards and committees.

4-a. Housing and Community Development Advisory Board meeting held on December 1, 2016.

4-b. Parks and Recreation Advisory Board meeting held on November 9, 2016.

It was moved by Councilmember Glover, seconded by Councilmember Freeman, that receipt of the above-listed minutes be acknowledged.

Councilmember Luna declared the motion carried unanimously by those present.

5. Hear reports on meetings and/or conferences attended.

Councilmembers expressed appreciation to staff for the swearing-in celebration on January 12, 2017.

Councilmember Luna: Falcon Field Airport Community/Tenant Check-In Meeting

6. Scheduling of meetings and general information.

City Manager Christopher Brady stated that the schedule of meetings is as follows:

Monday, January 23, 2017, 5:15 p.m. – Study Session

Monday, January 23, 2017, 5:45 p.m. – Council Regular Meeting

Saturday, January 28, 2017, 10:00 a.m. – Mesa Historic Home Tour

7. Adjournment.

Without objection, the Study Session adjourned at 7:55 a.m.

JOHN GILES, MAYOR

ATTEST:

DEE ANN MICKELSEN, CITY CLERK

I hereby certify that the foregoing minutes are a true and correct copy of the minutes of the Study Session of the City Council of Mesa, Arizona, held on the 19th day of January, 2017. I further certify that the meeting was duly called and held and that a quorum was present.

DEE ANN MICKELSEN, CITY CLERK

js
(Attachment – 1)

Parks and Recreation Bond Program Update 2017 Scheduled Projects

January 19, 2017



mesa•az

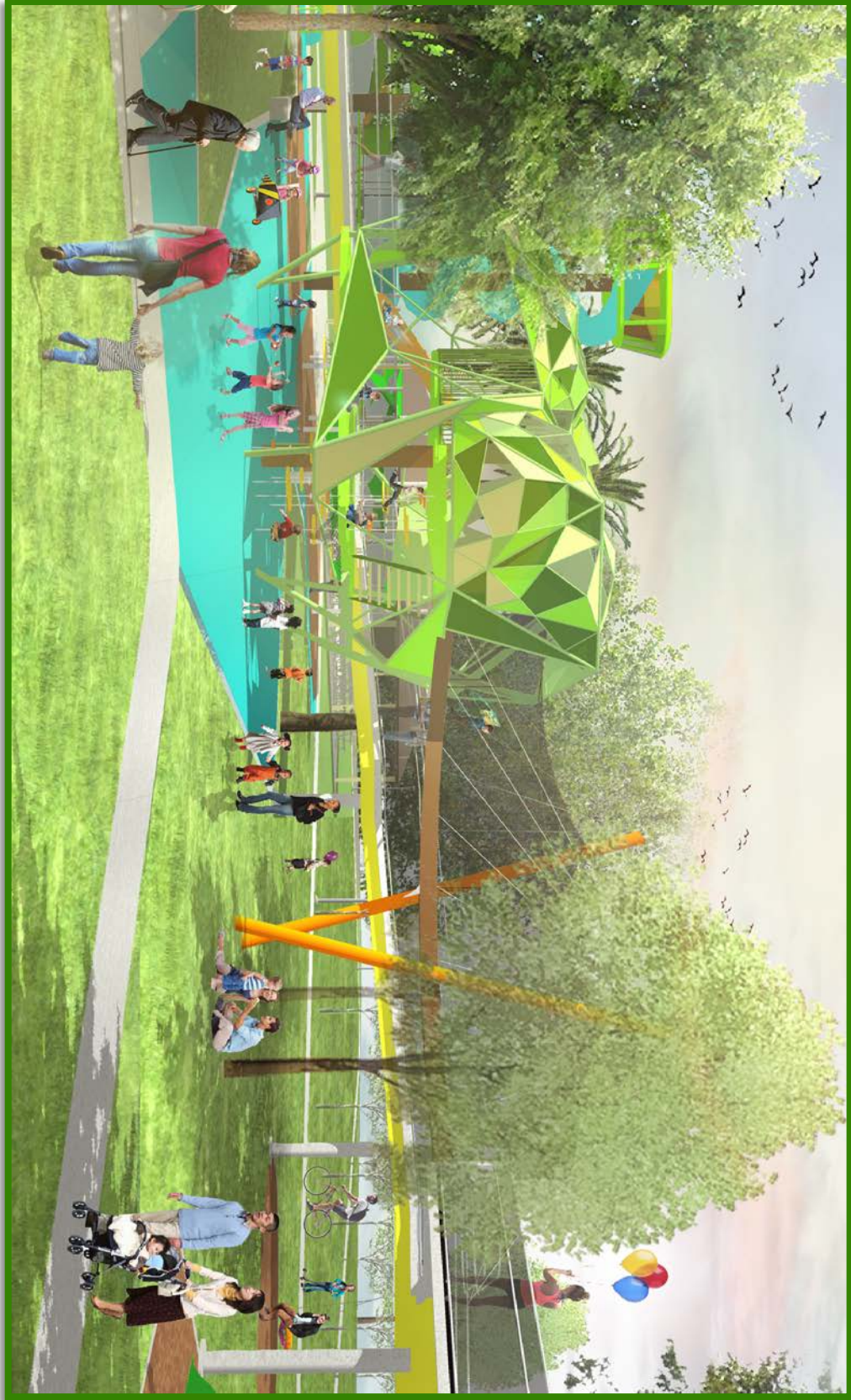
Pioneer Park Renovation

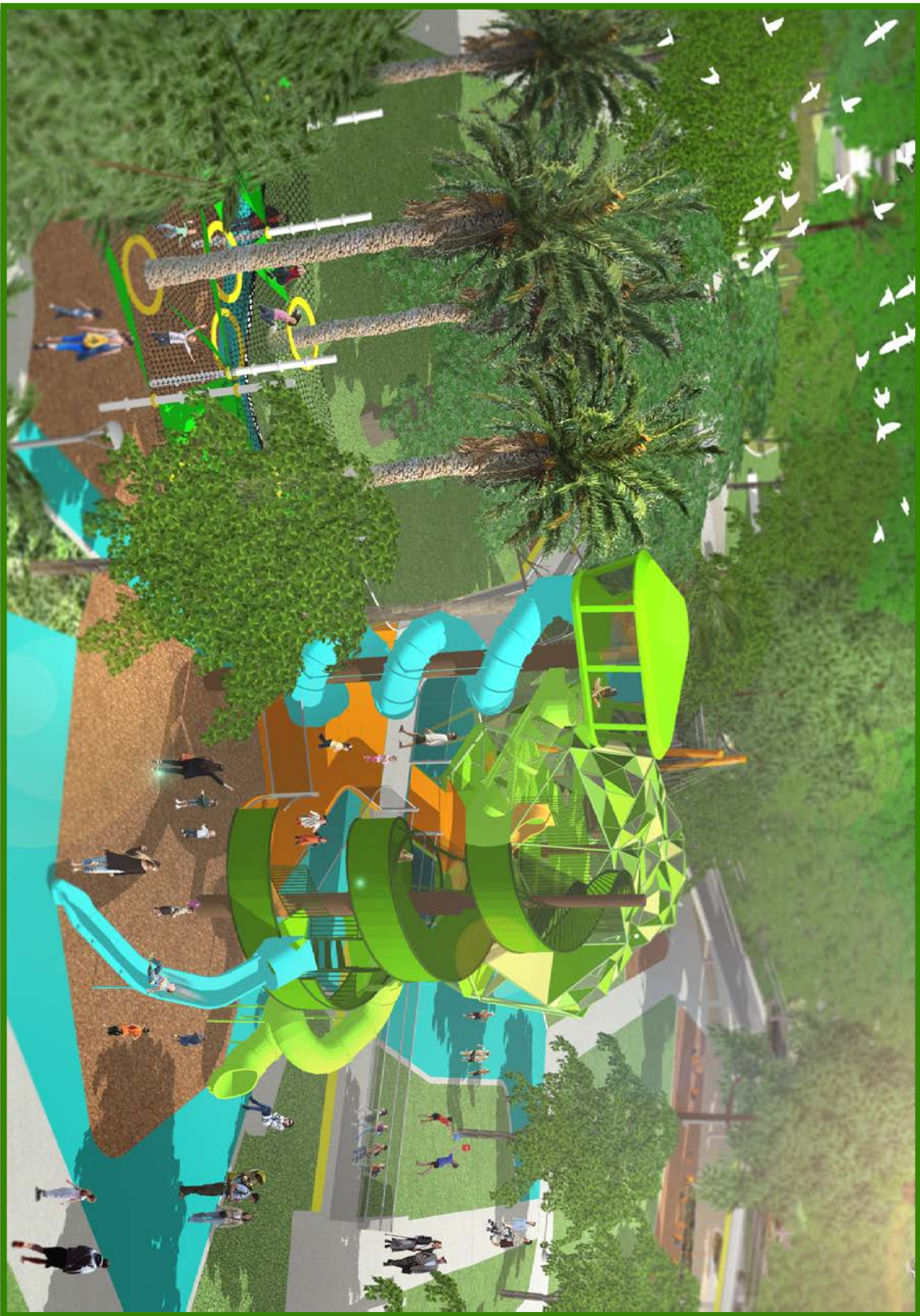
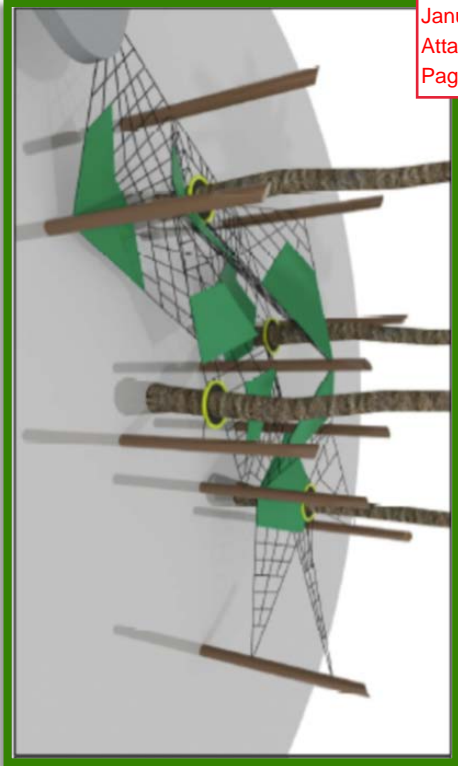
Total Project Budget:
\$7,950,000

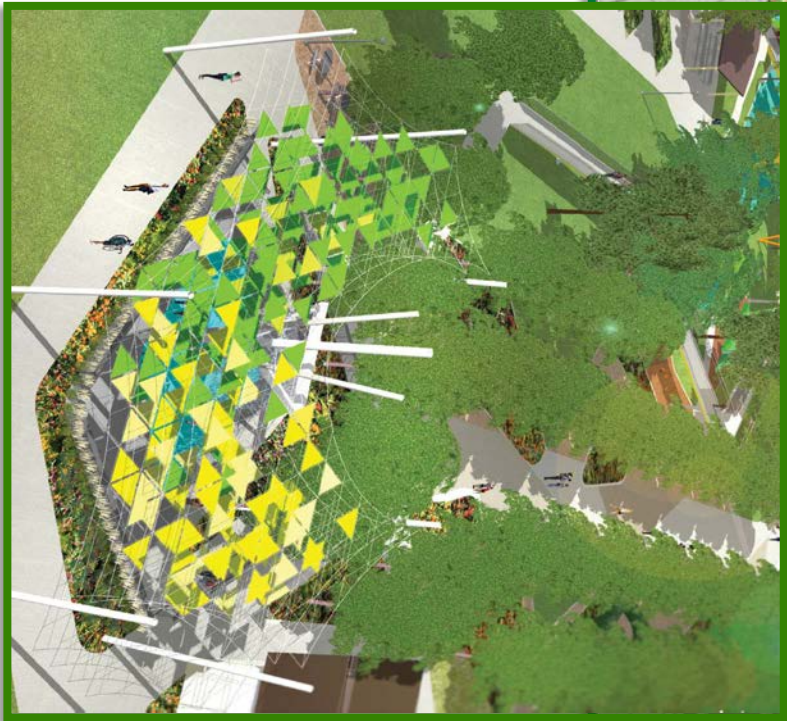
Estimated Construction Schedule:
May – December 2017

Major Elements:

- Splash Pad
- Playground
- Elevated Walkway
- Basketball Courts
- Train Plaza
- Grotto Monument
- Restroom Updates
- Park Furniture
- Park Lighting







Eagles Park and Community Center

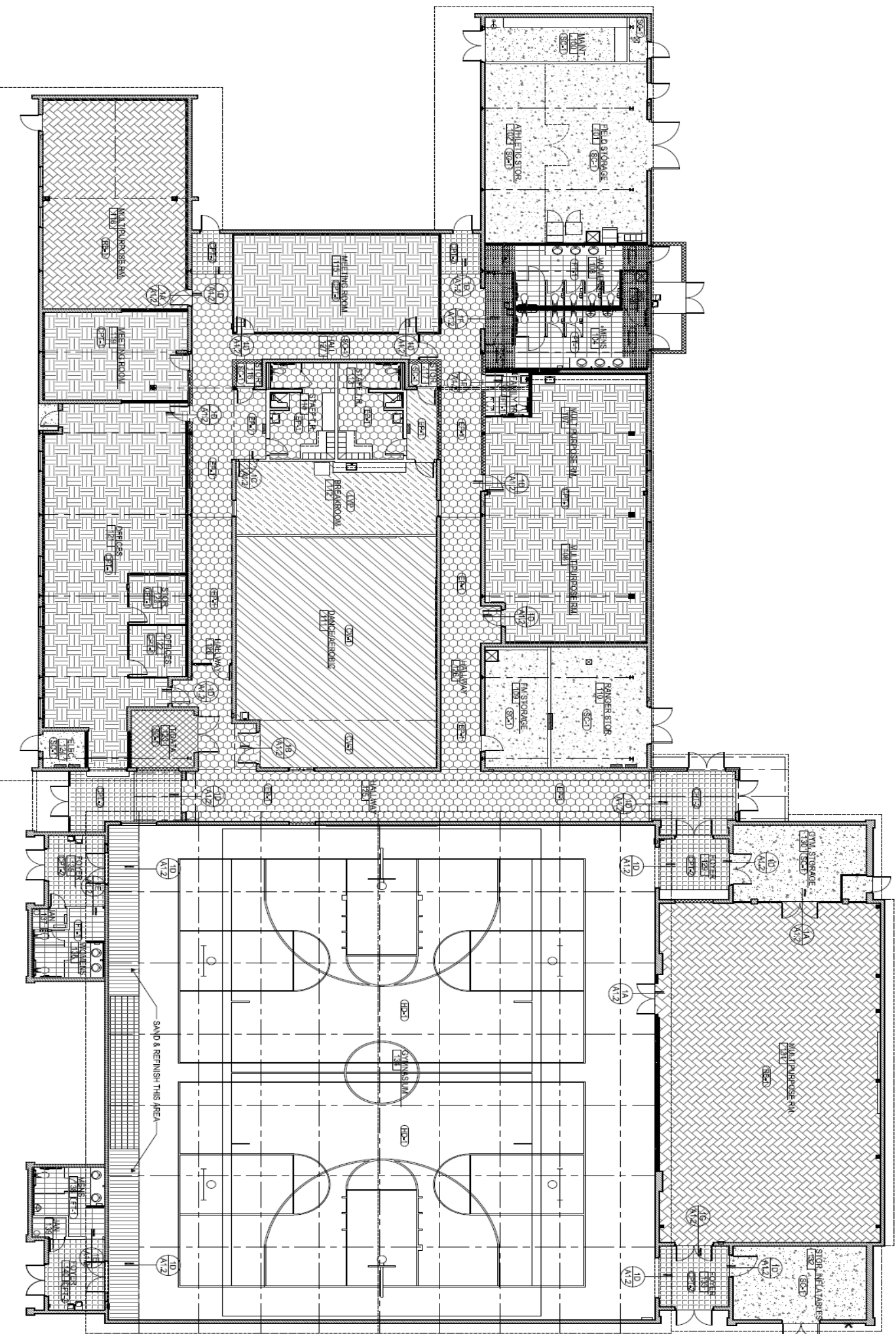
Total Project Budget:
\$7,300,000

Estimated Construction Schedule:

Phase 1 Community Center
May 2017 – August 2017
Phase 2 Park
September 2017—September 2018

Major Elements:
27,000 SF community center
4 full size lighted multiuse fields
Playground
Youth and Adult Fitness Equipment
Walking Paths
Picnic Ramada
Storm Water Retention



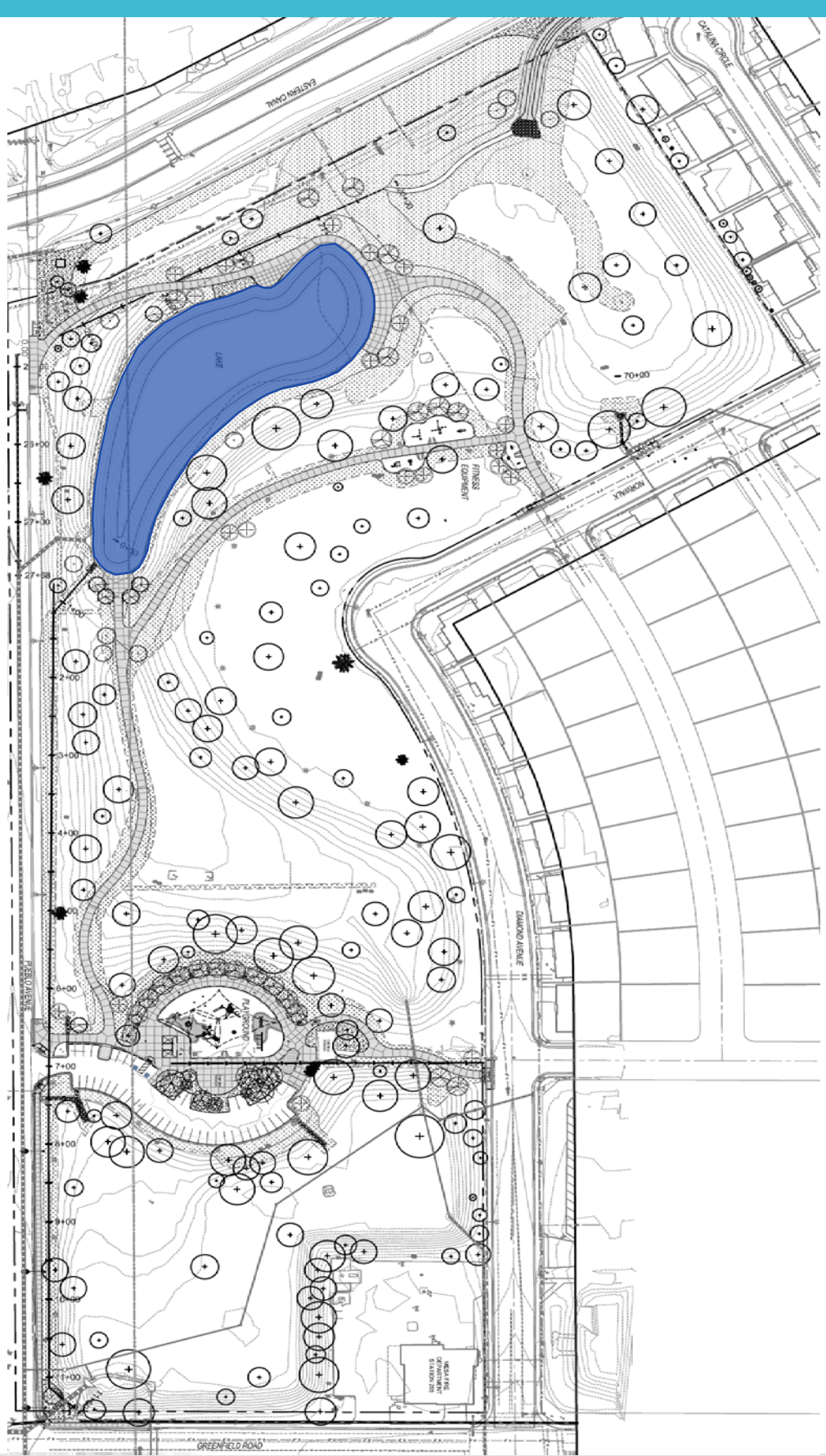


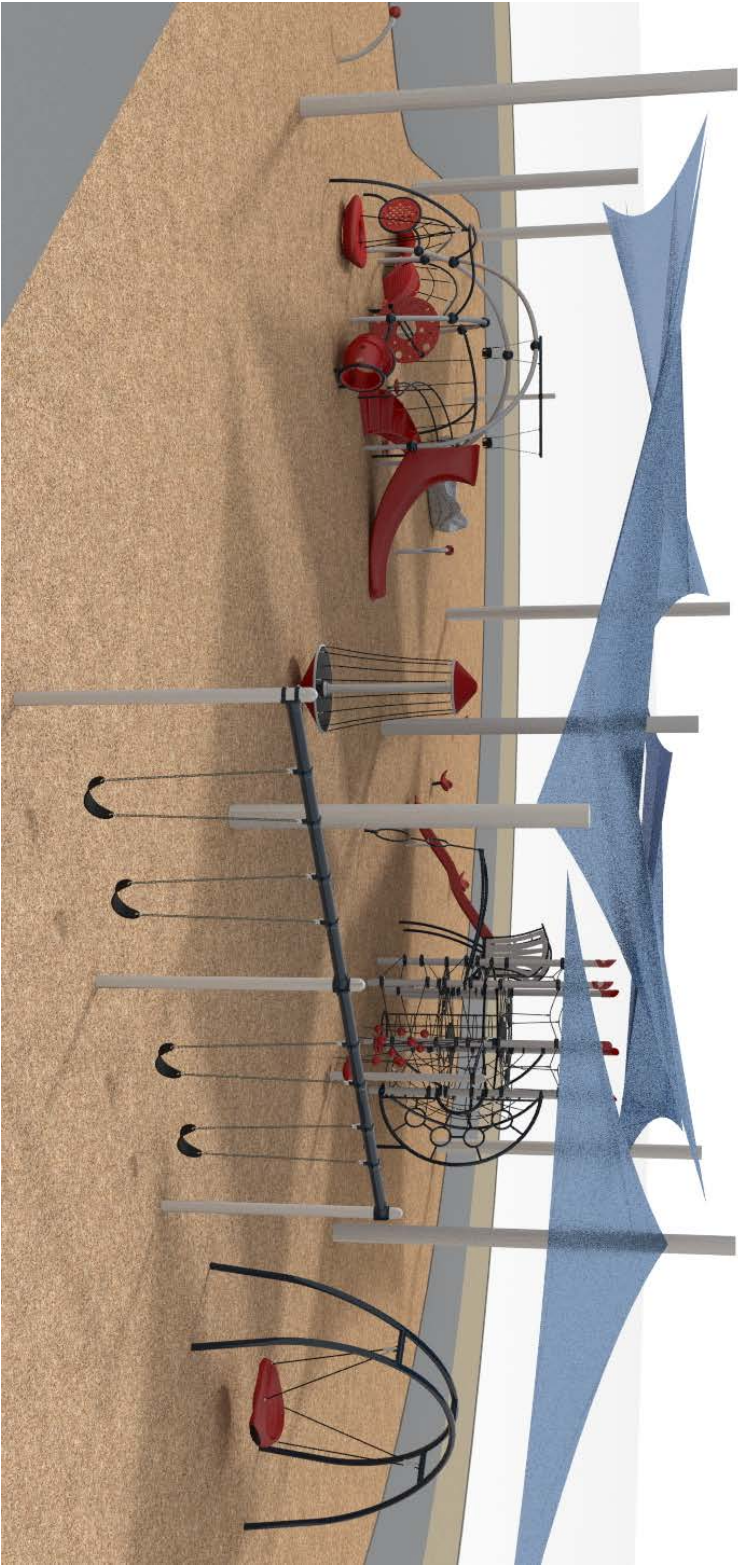
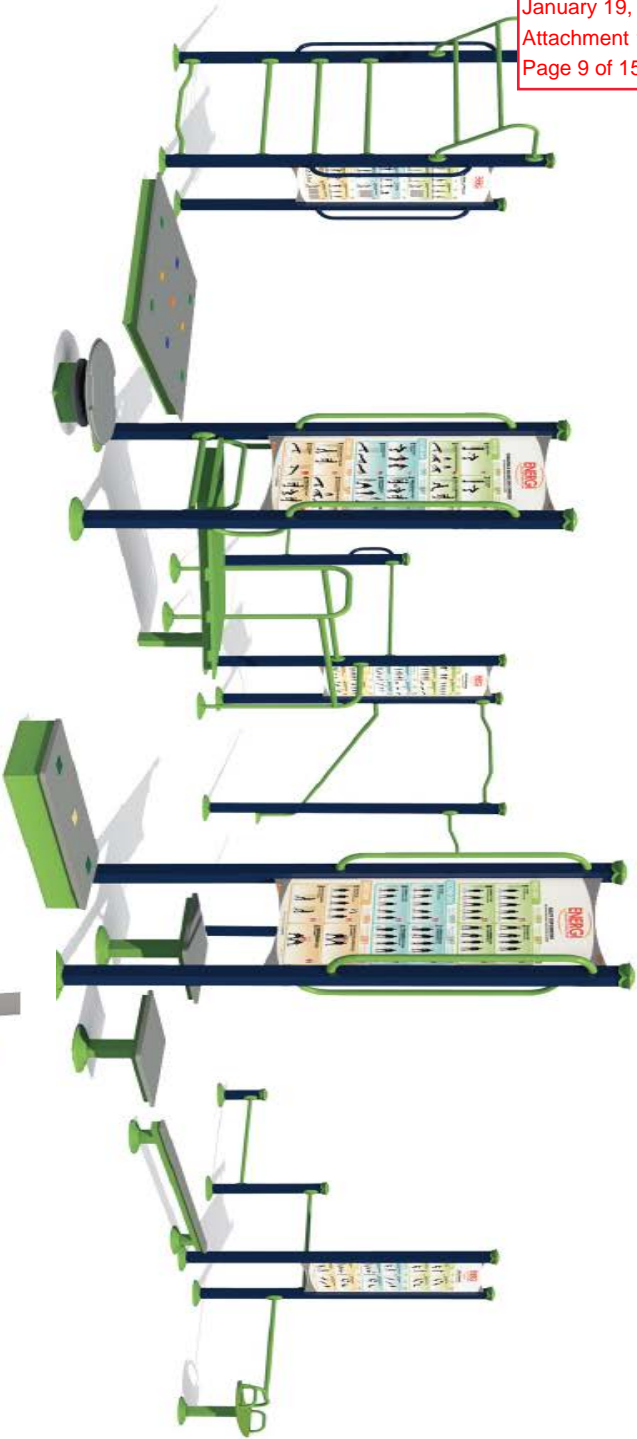
Greenfield Park Renovation

Total Project Budget:
\$3,950,000

Estimated Construction Schedule:
November 2016-September 2017

- Major Elements:
- Community Fishing Lake
 - Shaded Playground
 - Exercise Stations
 - Walking Paths
 - Restroom
 - Expanded Parking lot



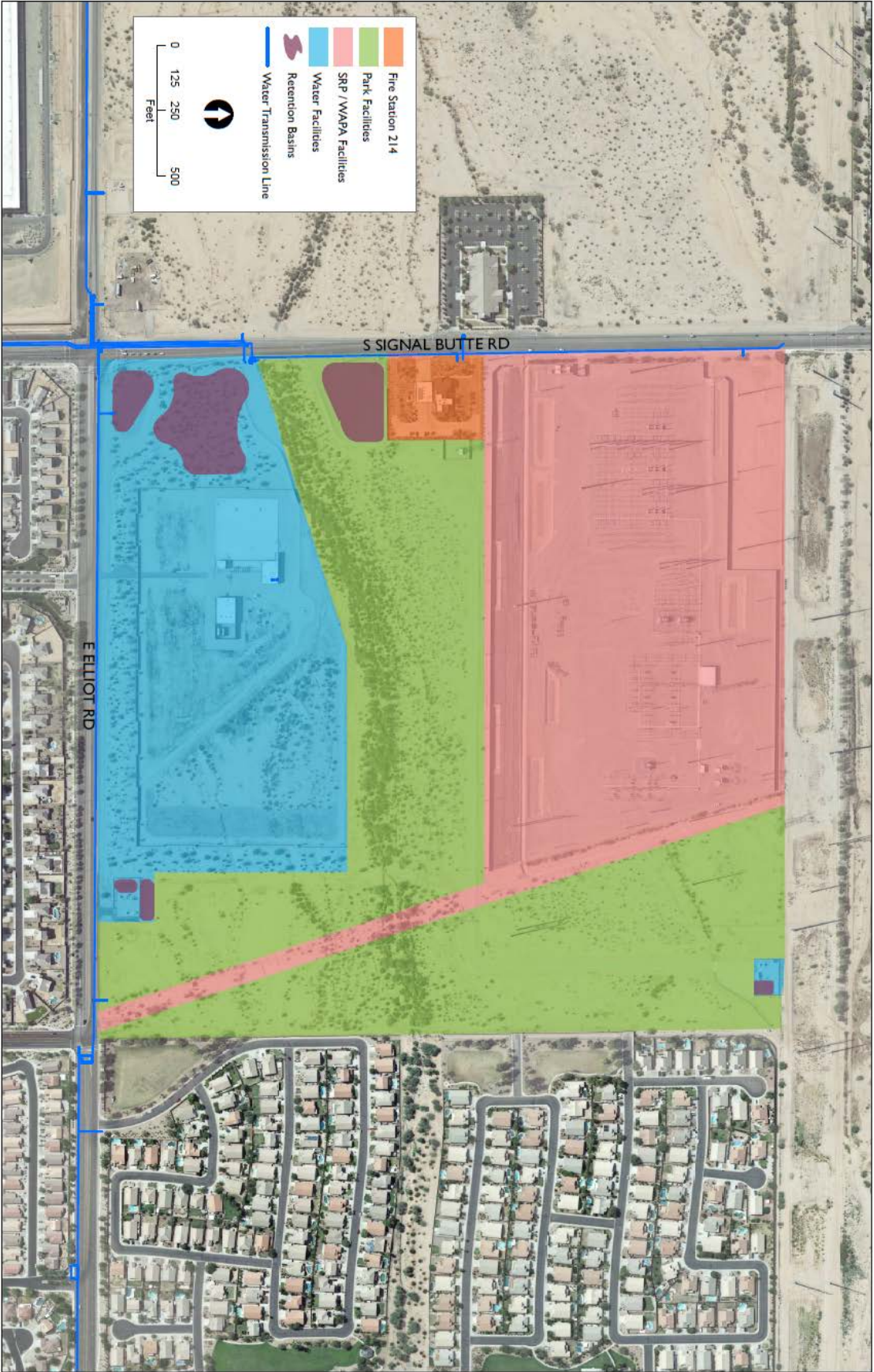


Signal Butte and Elliott Park

Total Parks Budget:
\$1,400,000

Estimated Schedule:
Design initiated
Planned construction completion
Spring 2018

Major Elements:
Trail System
Parking Lot

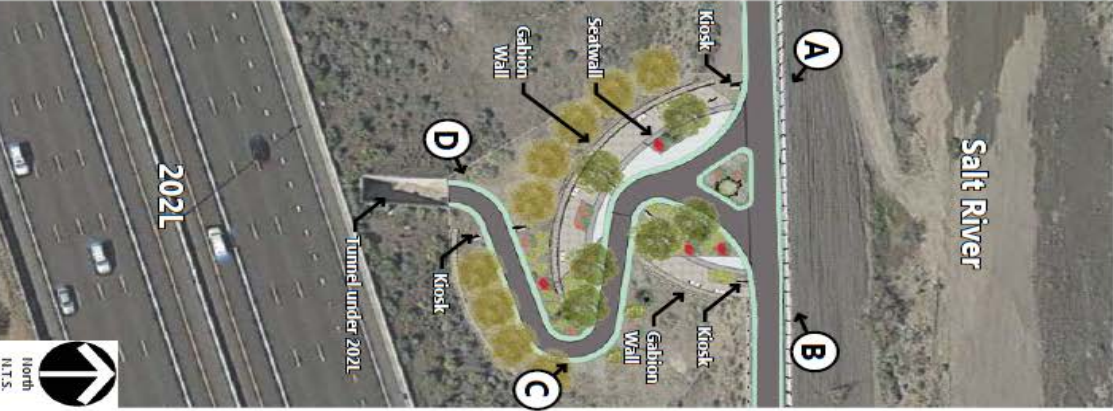


Rio Salado Pathway

Total Parks Budget:
\$4,234,000

Estimated Schedule:
Completed March 2017

Major Elements:
Connects to Stadium Connector
Pathway to the east
Connects to Tempe trail system
under the 202 to the west.



Stadium Connector Pathway

Total Project Budget:
\$5,600,000

Estimated Schedule:
Construction underway with
completion estimated for September
2017

Major Elements:
Connects the pathway at Center St.
(at Hohokam Stadium) to the Rio
Salado Pathway and the 202
Shared-use paths along the Tempe
Cross-Cut Canal and the Tempe Drain
Cycle tracks (Separated bike lane)
along Alma School Road,
Date/Brown and Country Club Drive
Bicycle Sharrow (shared roadway) at
10th Street between Date and Alma
School Road.



South East Mesa Pathway

Total Parks Budget:

\$1,550,000

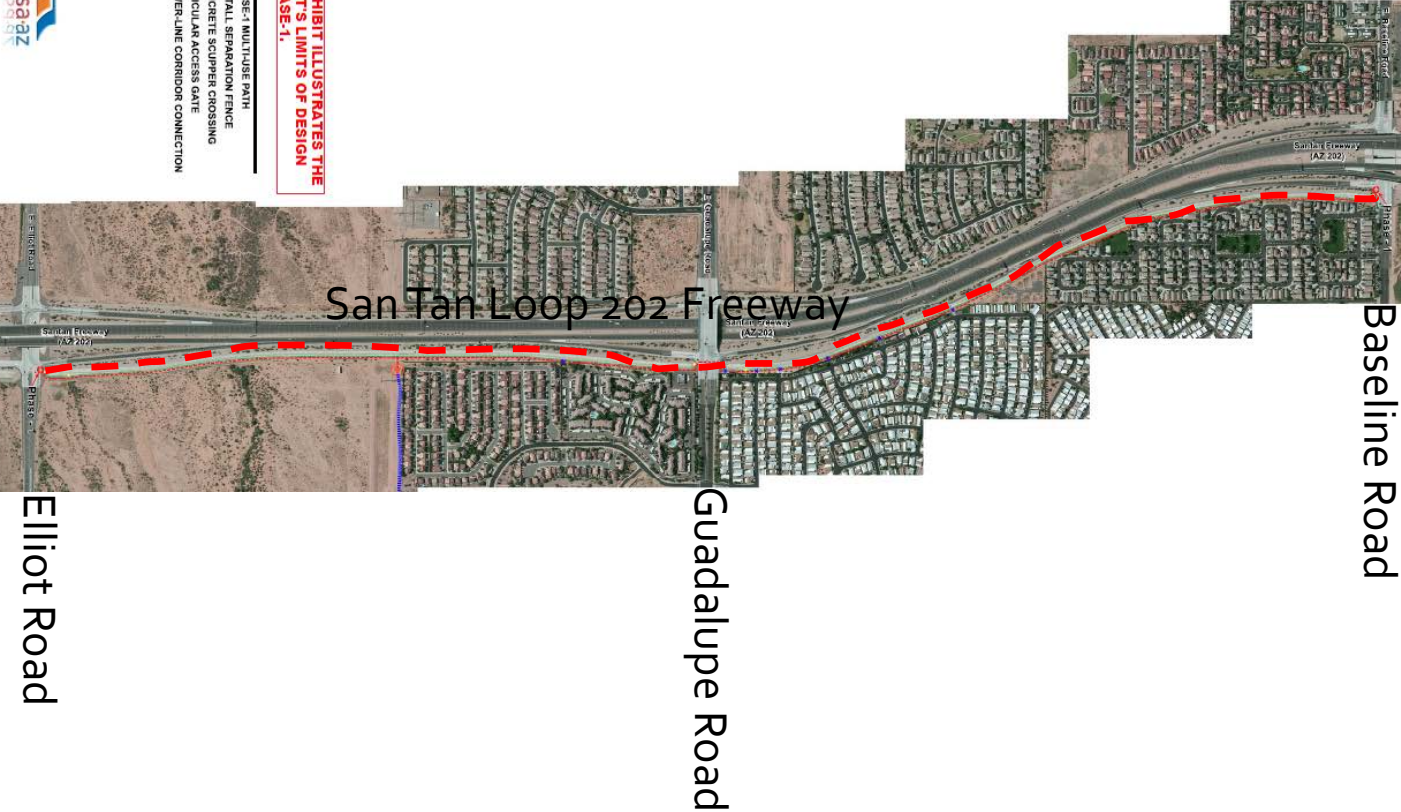
Estimated Schedule:

Completion planned for November
2017

Major Elements:

Phase 1 – Pathway construction
from Baseline to Guadalupe

Phase 2 – Pathway construction
from Guadalupe to Elliot



Questions?

2012 Parks and Recreation Bond Program Completed Projects

- Desert Trails Park
- Desert Arroyo Park
- Mariposa Park
- Fiesta Sports Park
- Monterey Park (purchase additional land for future growth)
- Riverview Park
- Mesa Aquatic Complex
- Existing Park Improvements:
 - 106 ballfield light poles and lights were replaced at 25 fields throughout the City
- Playgrounds have been replaced at Porter, Vista Monterey, Pequeno, Emerald, Dobson Ranch, Gene Autry
- New surfacing at Augusta Ranch and Valencia
- Shade over playgrounds at Rancho del Mar and Kingsborough
- Irrigation improvements have been completed at Candlelight, Sherwood, Gene Autry, Carriage Lane, Harmony, Meadowgreen, Fitch, Red Mountain, and Woodglen
- New sign package was created and installation is ongoing throughout the parks system