



Permanent Household Hazardous Waste Facility

February 9, 2017

Scott Bouchie, Department Director
Environmental Management & Sustainability

Mission:

Encourage efficient use of natural resources, protect the community from environmental hazards, and ensure excellence in the delivery of solid waste services through waste reduction, reuse, recycling, innovative technology, and education.

Recycling Overview

- Fiscal Year 15/16 Benefit
 - ASL recycling revenue = \$660K
 - Avoided landfill cost = \$800K
 - Overall net benefit = \$1.5M
- Recycling Challenges (Nationally)
 - Education
 - Contamination
 - Commodity market



Recycling Environmental Benefits

- Reduce, Reuse, Recycle
- Extends the life of landfills
- Social responsibility
- Reduce dependence on natural resource
- Creates jobs



Household Hazardous Waste Events

Purpose:

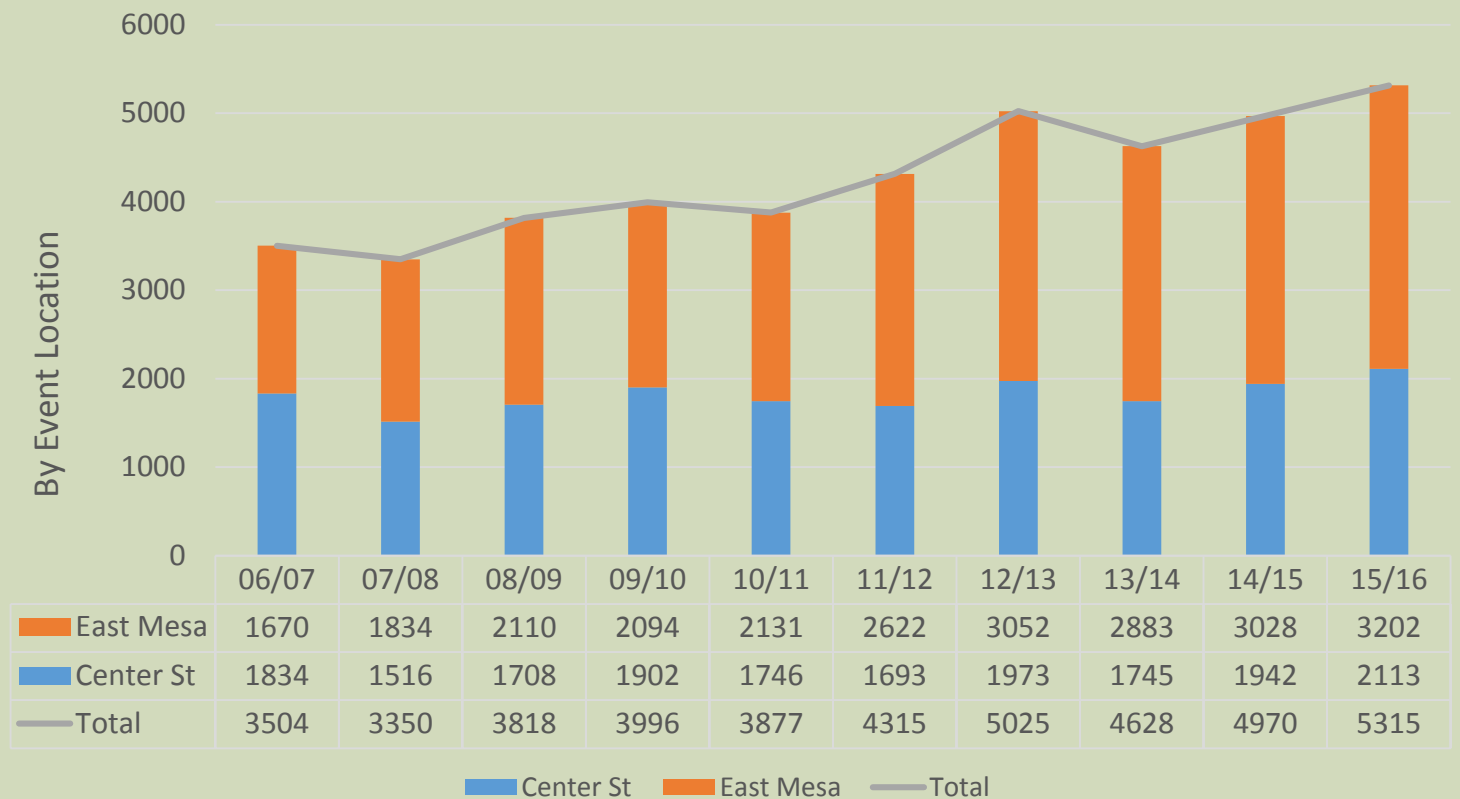
- Prevent Hazardous Waste from contaminating sanitary sewer and stormwater sewer systems, and Solid Waste vehicles
- Provide a convenient way for residents to properly dispose of or recycle hazardous materials



Household Hazardous Waste Events

- Very popular events with increasing attendance
- Multiple lines maximize number of residents served
- Large volumes of HHW collected
- Due to schedule, residents store HHW between events

Number of Vehicles by Event Location



Residents Want the Service

- “We appreciate having a way to responsibly dispose of these waste items. Thank you!”
- **“Fantastic! very proud Mesa has such a program!”**
- “Best arranged hazardous roundup I have ever attended”
- “The event area is clean and well organized. The staff is friendly. The cause is great.”



Residents Do Not Like to Wait

- **“Two hours to drop off old oil and paint.”**
- “It was SO crowded and we waited in line for over an hour. It would be nice if the hours were expanded, or you added more days so that its easier to participate. I probably will not do this again unless something is done to alleviate the super long lines...”
- “I spent 45 minutes in my car, driving .5 mph, to drop off a 1/2 bag sandwich size Ziplock bag of used batteries. I spent a gallon of gas!! There has to be a better method of dropping off small amounts of items like this!!!!”



Permanent Facility

- Increase hours of operation from 4 hours/event to 20 hours/week
- Increase level of service from 16 hours/year to 1,040 hours/year
- Service will include Saturdays



- HHW operations (4000 sf)
 - Drop off
 - Sorting/bulking operation
 - Swap Shop
- SW Support Services (1800 sf)
- Future Expansion (1000 sf)

Permanent Facility

Accepted items:

Appliances

Automobile tires

Batteries

Electronics (computers, TV)

Fireworks, small arms ammunition

Fluorescent light bulbs

Gasoline

Grill/Camping propane tanks

Medical sharps

Motor oil, antifreeze & transmission fluid

Paint, polishes & varnishes

Paint related materials (thinner, turpentine, etc.)

Pesticides & fertilizers

Pool chemicals

Smoke detectors & fire extinguishers

Cathode Ray Tube (CRT) TV's

Annual Labor and Disposal Costs

| | Current Program | Permanent Facility | Funding Source |
|--|------------------|------------------------------|-------------------|
| Contractor Labor | | | |
| 4 Events per Year | \$121,000 | | HHW Fee |
| Two Technicians at \$35K each | | \$70,000 | HHW Fee |
| City of Mesa Labor | | | |
| Environmental staff | \$36,000 | | Environmental Fee |
| Solid Waste Staff | \$25,000 | | HHW Fee |
| Environmental Technician | | \$56,000 | HHW Fee |
| Environmental Specialist (Supervisor) | | \$80,000 | HHW Fee |
| Other Services (Printing, PD, traffic control) | \$80,000 | | HHW Fee |
| Disposal Costs | \$317,000 | \$374,000 - \$404,000 | HHW Fee |
| Total | \$579,000 | \$580,000 – \$610,000 | |

FY16/17 Revenue Projection for HHW Fee is \$615,000

Construction

| Expense Category | Projected Expenses | Funding Source |
|----------------------------------|--------------------|-------------------|
| Facility Design Consultant Fees | \$300,000 | Environmental Fee |
| Construction Costs | | |
| CMAR Estimate based on 30% plans | \$3,368,000 | Solid Waste Bond |
| Initial Equipment Requirements | | |
| Based on 2017 quotes | \$250,000 | Environmental Fee |
| Total Estimated Costs | \$3,918,000 | |

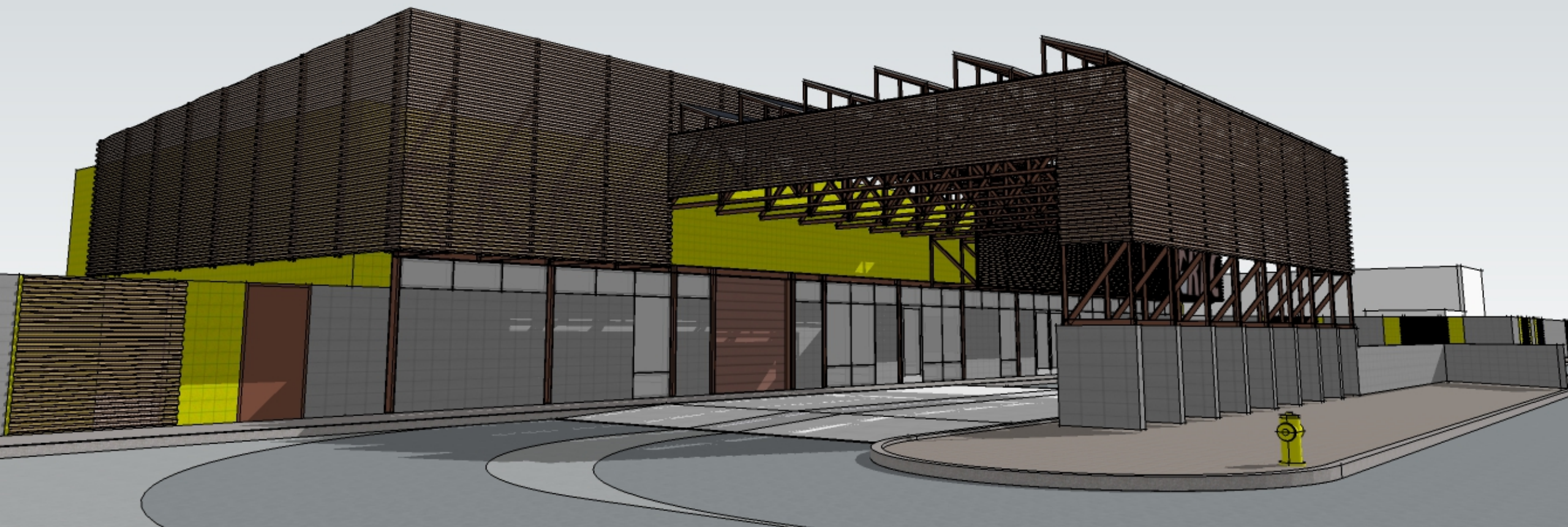
Design Phase
July 1, 2016 – June 30, 2017

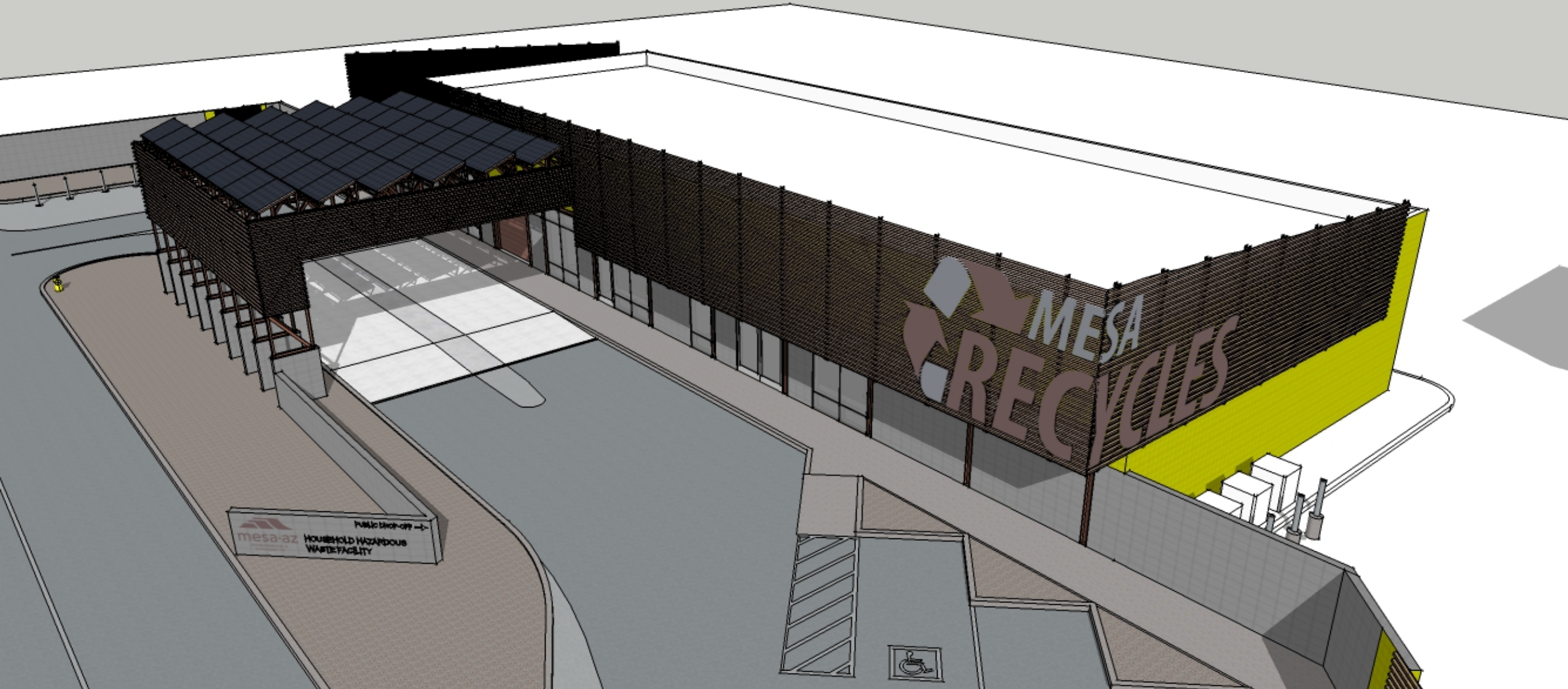
Construction Phase
Sept 1, 2017 – August 30, 2018

Open/Monitor Operations
Sep 1, 2018 –

HHW Events through April 2018









Questions

