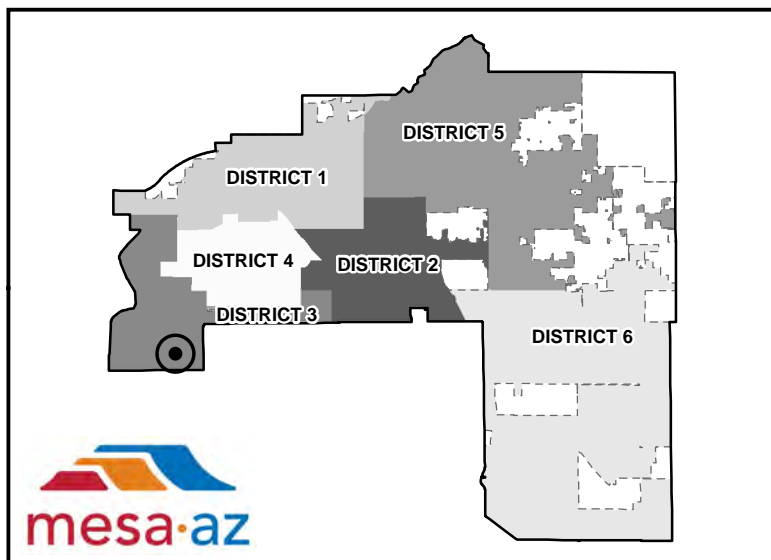
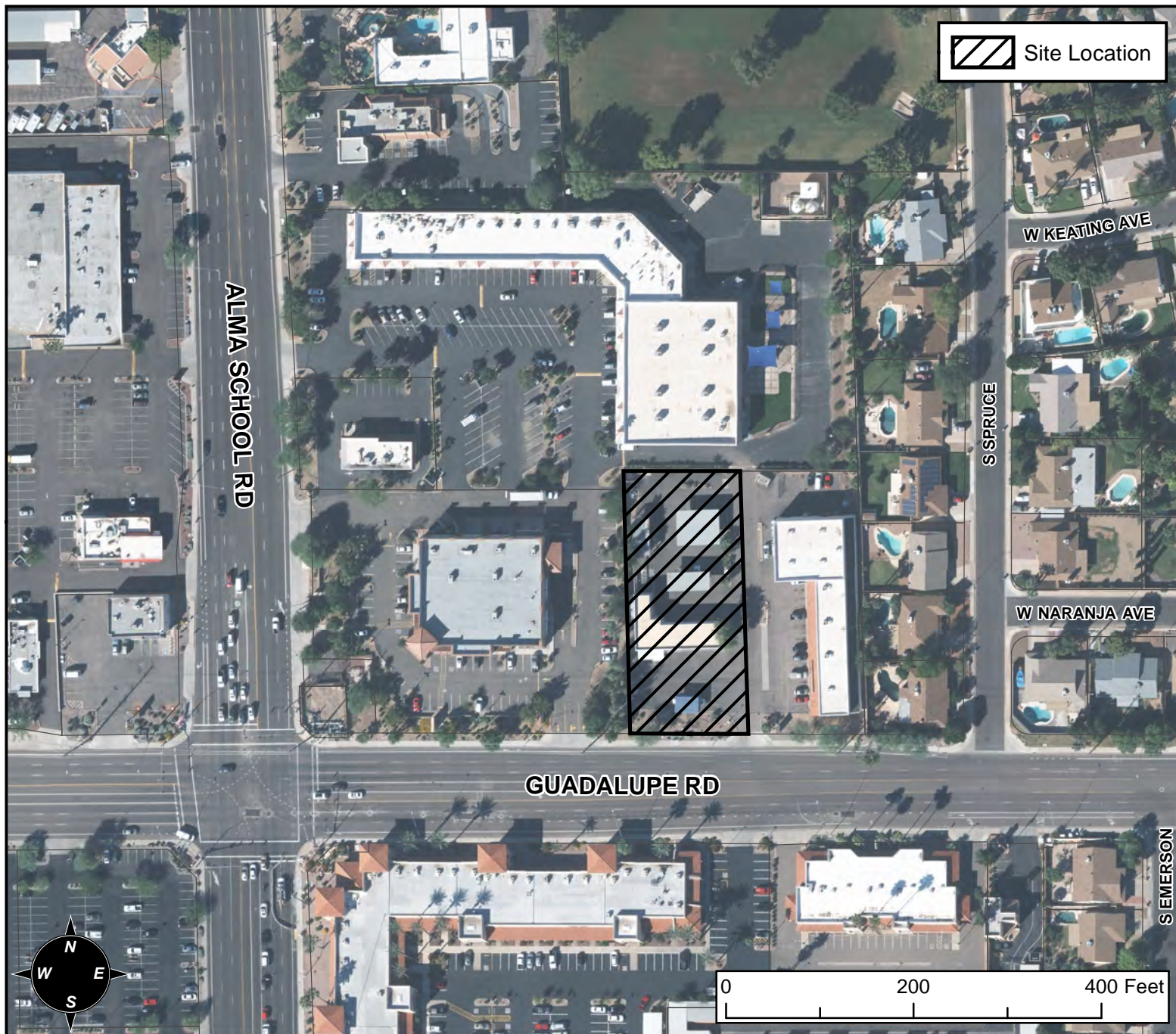


BOARD OF ADJUSTMENT VICINITY MAP: BA17-015



CASE DETAIL

CASE:

BA17-015

SITE / ADDRESS:

1118 W. GUADALUPE ROAD - (DISTRICT 3)

REQUEST:

REQUESTING: 1) A SUBSTANTIAL CONFORMANCE IMPROVEMENT PERMIT (SCIP); AND 2) A MODIFICATION OF SPECIAL USE PERMIT (SUP); BOTH TO ALLOW MODIFICATIONS TO AN EXISTING CAR WASH FACILITY IN THE LC DISTRICT.