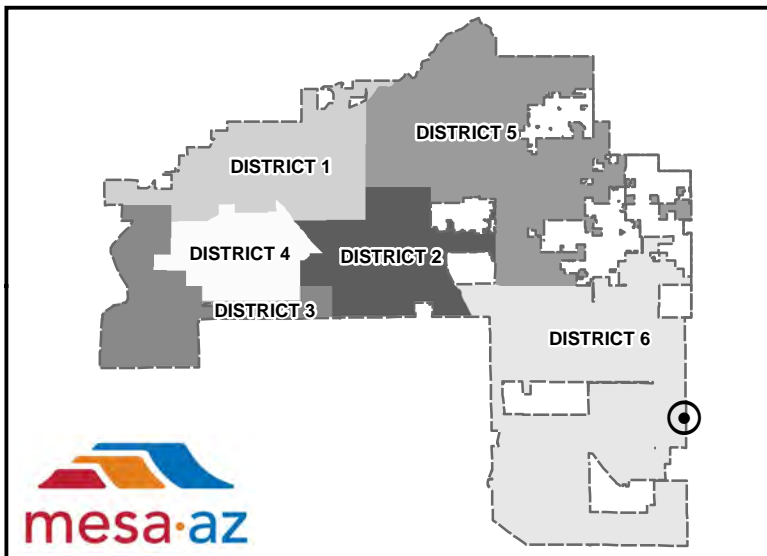
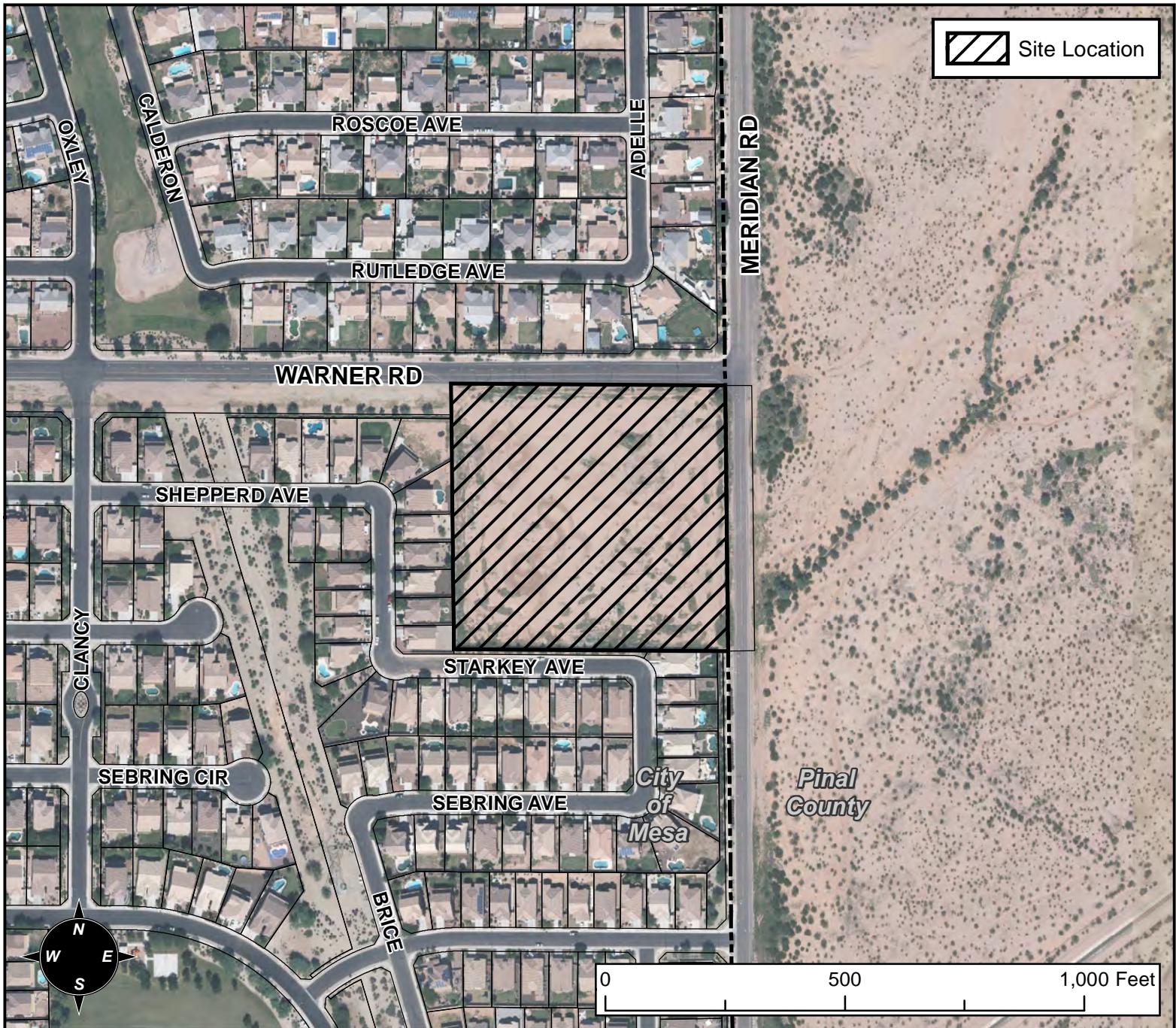


# PLANNING AND ZONING VICINITY MAP: Z16-056



## CASE DETAILS

### CASE:

Z16-056

PRE-PLAT : ☒

### SITE / ADDRESS:

11500 BLOCK OF EAST WARNER ROAD (SOUTH SIDE) -  
(DISTRICT 6)

### REQUEST:

REZONE FROM LC TO RSL-2.5; AND SITE PLAN  
REVIEW. THIS REQUEST WILL ALLOW THE  
DEVELOPMENT OF A SINGLE RESIDENCE  
SUBDIVISION.