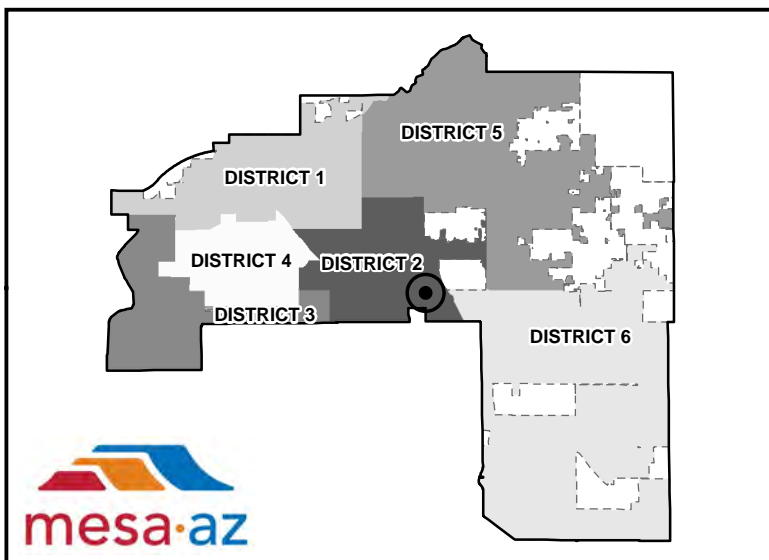
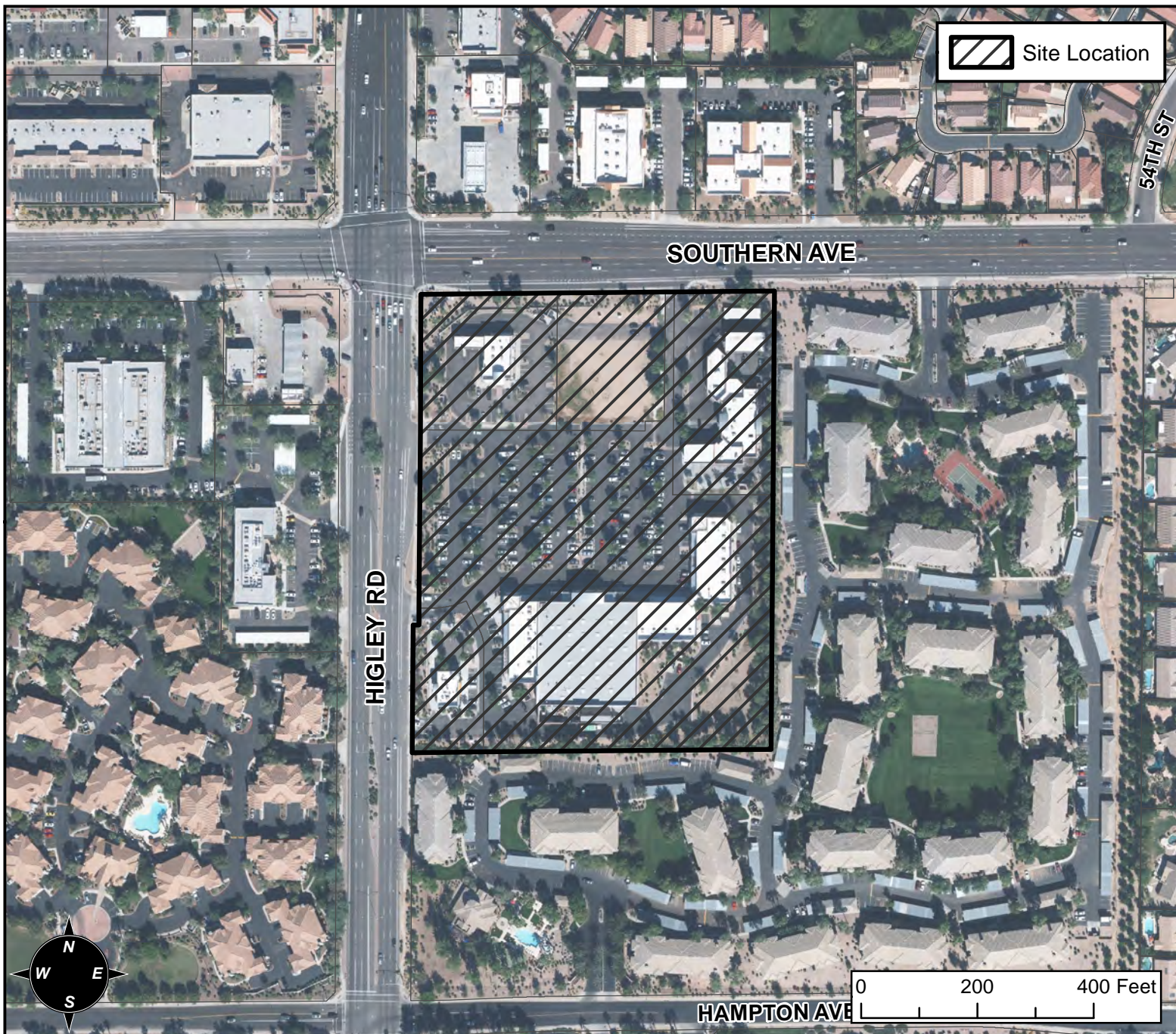


BOARD OF ADJUSTMENT VICINITY MAP: BA16-062



CASE DETAIL

CASE:

BA16-062

SITE / ADDRESS:

5245 E SOUTHERN AVENUE - (DISTRICT 2)

REQUEST:

REQUESTING A SPECIAL USE PERMIT (SUP) TO ALLOW: 1) MODIFICATION OF AN EXISTING COMPREHENSIVE SIGN PLAN (CSP), AND 2) FOR AN ELECTRONIC MESSAGE DISPLAY TO CHANGE MORE THAN ONCE PER HOUR FOR AN EXISTING CAR WASH WITHIN A COMMERCIAL CENTER IN THE LC ZONING DISTRICT.