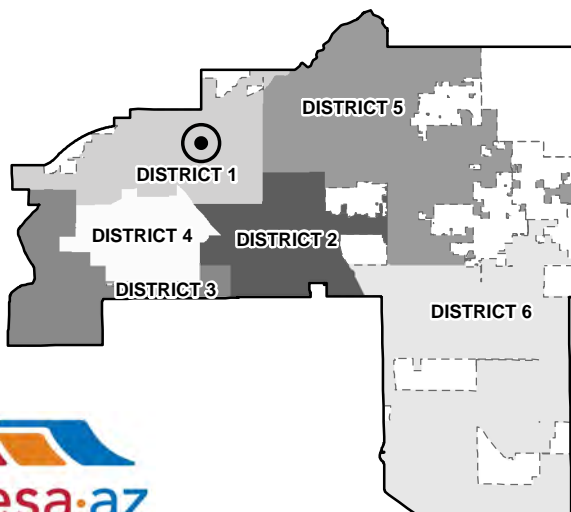
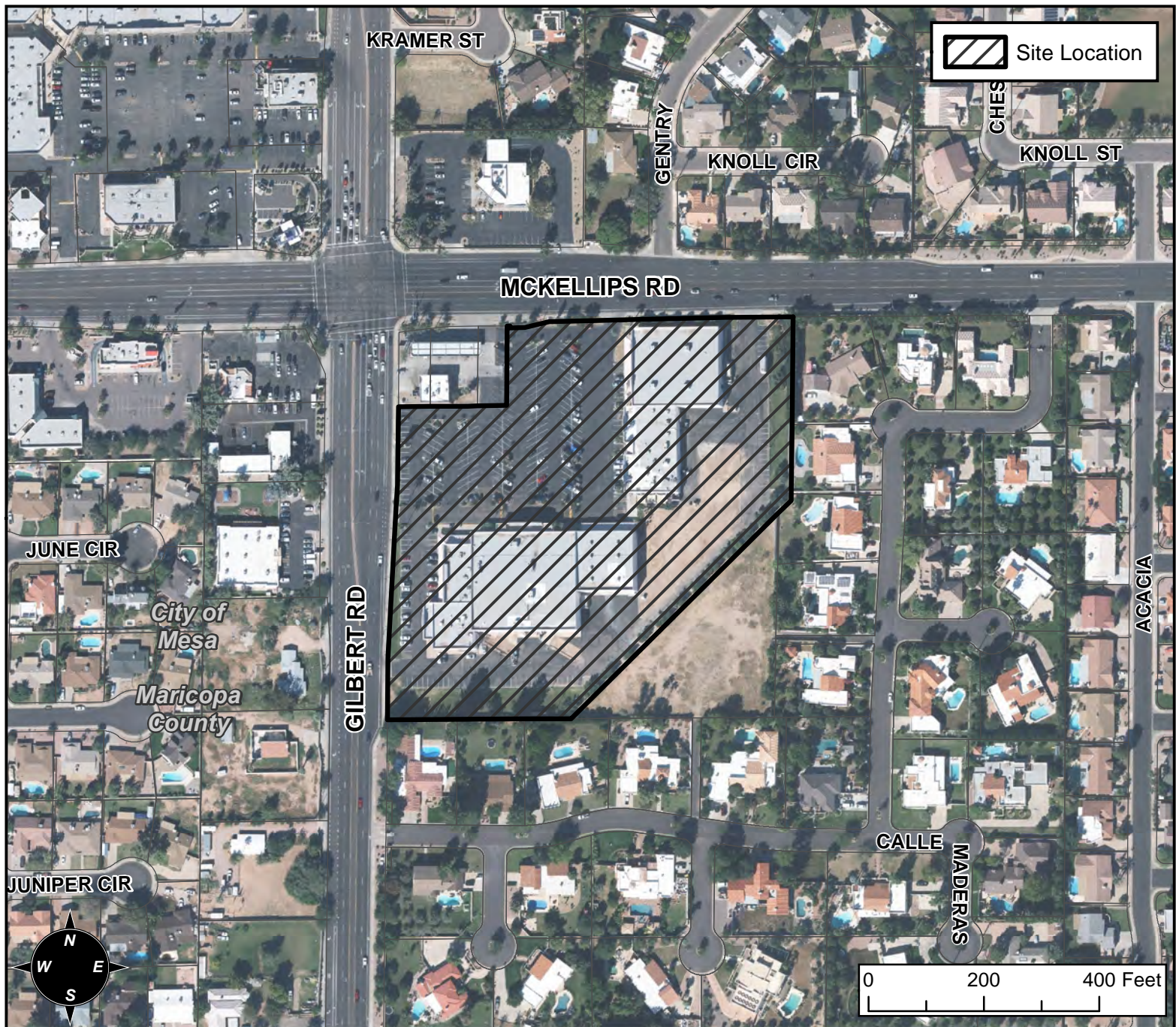


BOARD OF ADJUSTMENT VICINITY MAP: BA16-044



CASE DETAIL

CASE:

BA16-044

SITE / ADDRESS:

1927 N GILBERT ROAD - (DISTRICT 1)

REQUEST:

REQUESTING: 1) A SUBSTANTIAL CONFORMANCE IMPROVEMENT PERMIT (SCIP) AND; 2) A SPECIAL USE PERMIT (SUP) FOR A COMPREHENSIVE SIGN PLAN (CSP), BOTH ASSOCIATED WITH THE DEVELOPMENT OF A DRIVE-THRU RESTAURANT IN THE LC ZONING DISTRICT.