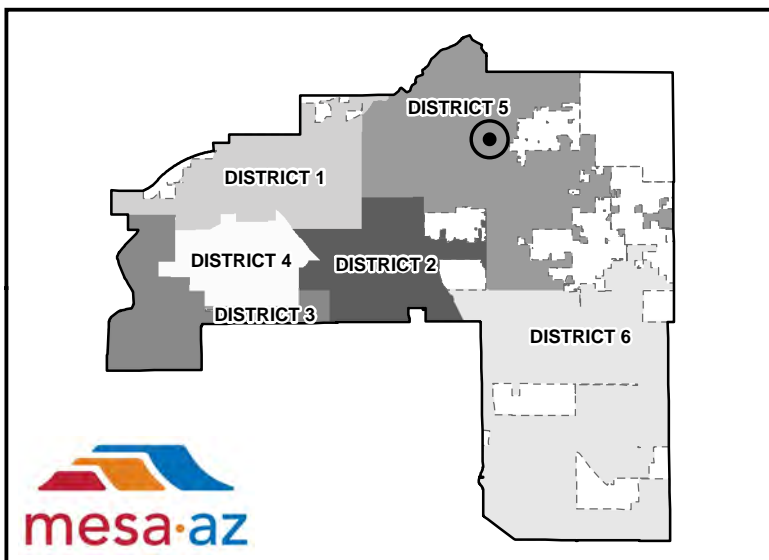
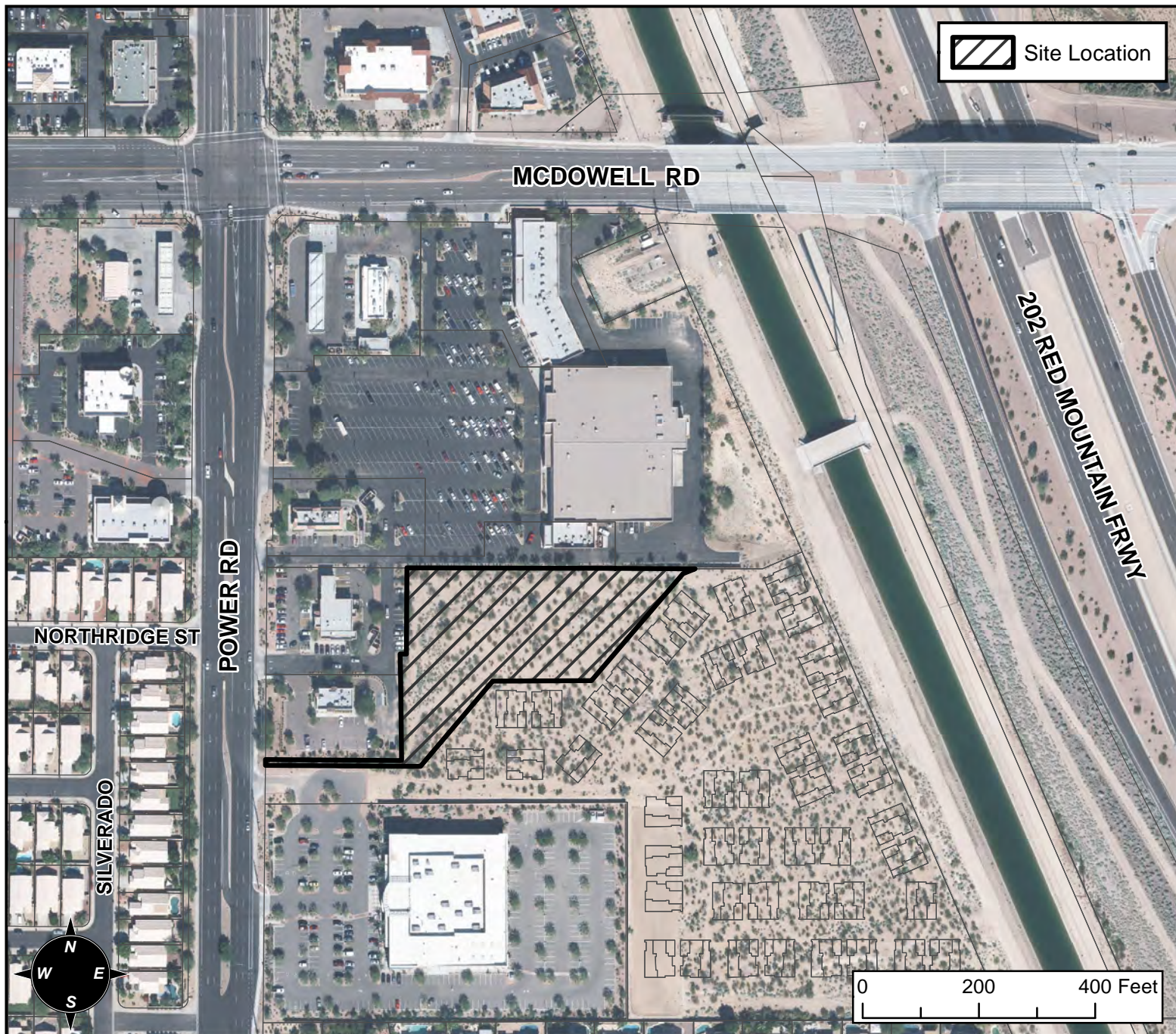


BOARD OF ADJUSTMENT VICINITY MAP: BA16-063



CASE DETAIL

CASE:

BA16-063

SITE / ADDRESS:

2665 N POWER - (DISTRICT 5)

REQUEST:

REQUESTING A SPECIAL USE PERMIT (SUP) TO ESTABLISH A COMPREHENSIVE SIGN PLAN (CSP) FOR A COMMERCIAL BUILDING IN THE LC-PAD ZONING DISTRICT.