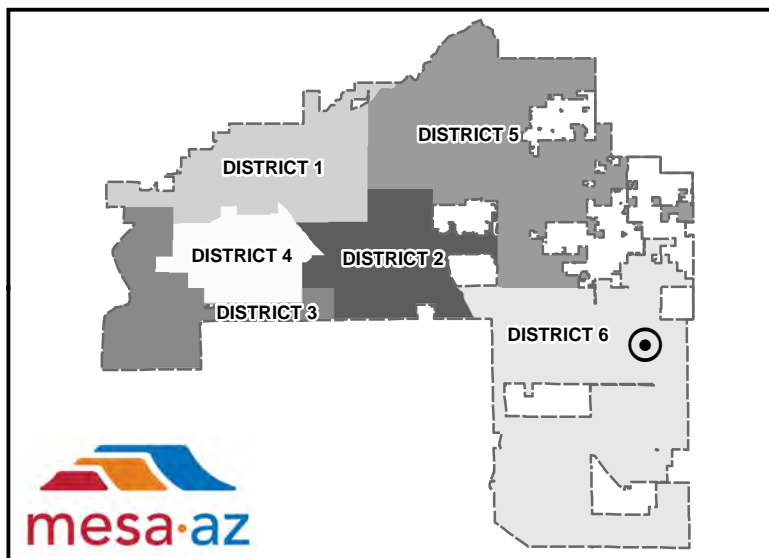
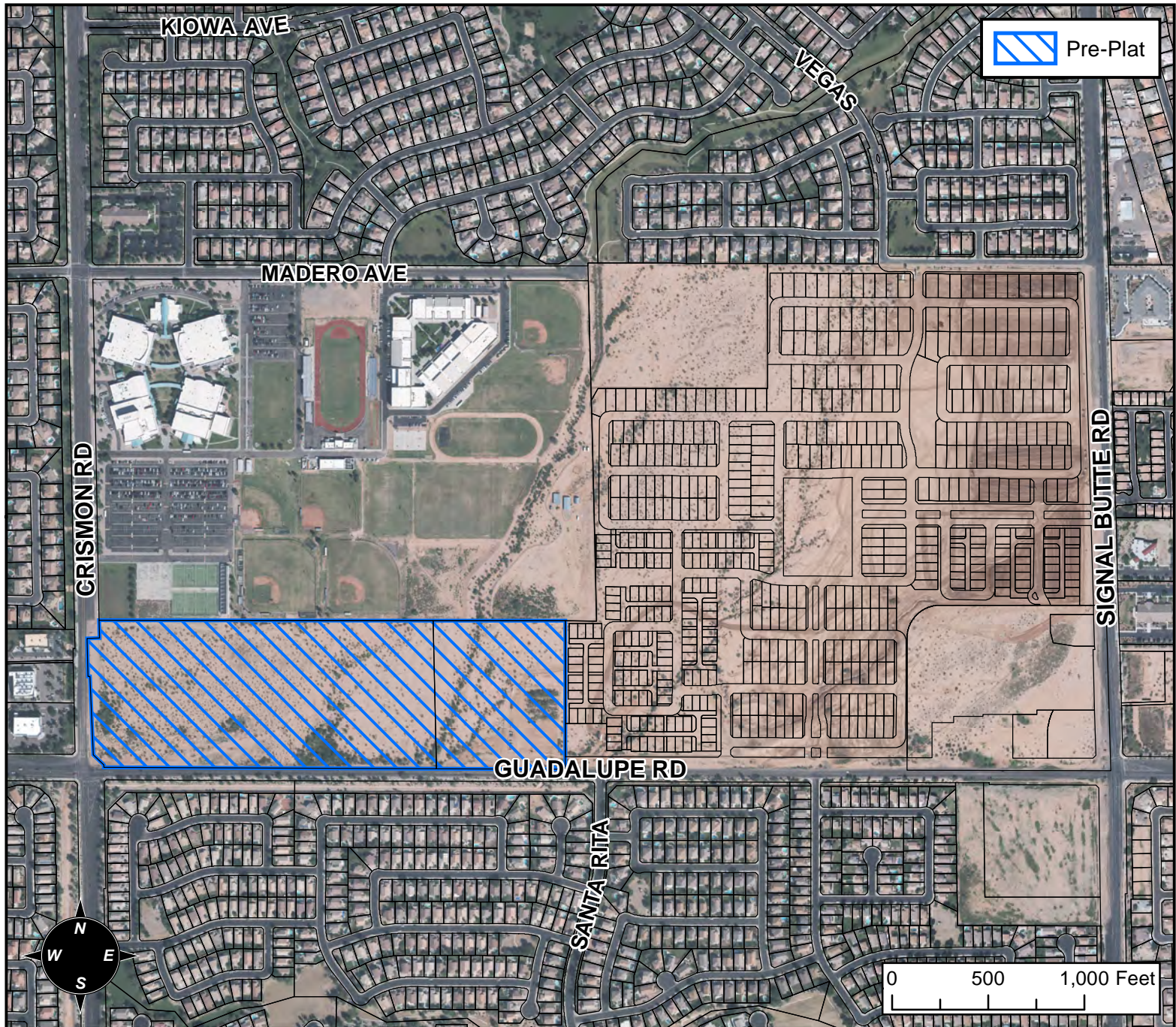


PLANNING AND ZONING VICINITY MAP: Z16-049



CASE DETAILS

CASE:

Z16-049

PRE-PLAT : ☒

SITE / ADDRESS:

2400 TO 2700 BLOCKS OF SOUTH SIGNAL BUTTE ROAD (WEST SIDE), 10000 THROUGH 10700 BLOCKS OF EAST GUADALUPE ROAD (NORTH SIDE), AND 2600 THROUGH 2700 BLOCKS OF SOUTH CRISMON ROAD (EAST SIDE). LOCATED WEST OF SIGNAL BUTTE ROAD, NORTH OF GUADALUPE ROAD AND EAST OF CRISMON ROAD ENCOMPASSING THE ENTIRE MULBERRY RESIDENTIAL DEVELOPMENT.

REQUEST:

MODIFYING THE PROJECT NARRATIVE ASSOCIATED WITH THE MULBERRY PAD (172.5 ± ACRES). REZONING FROM RSL-2.5-PAD AND RM-2-PAD TO RSL-4.5-PAD ON 43.4± ACRES IN THE 10000 THROUGH 10300 BLOCKS OF EAST GUADALUPE ROAD AND 2600 THROUGH 2700 BLOCKS OF SOUTH CRISMON ROAD, KNOWN AS MULBERRY PARCEL 5; AND SITE PLAN REVIEW. THIS REQUEST WILL ALLOW FOR SINGLE RESIDENCE DEVELOPMENT.