

City of Mesa Multi-Use Path Projects Update

City of Mesa
Council Study Session
October 13, 2016



Porter Park Pathway



Length: 1 mile

Phase: Open

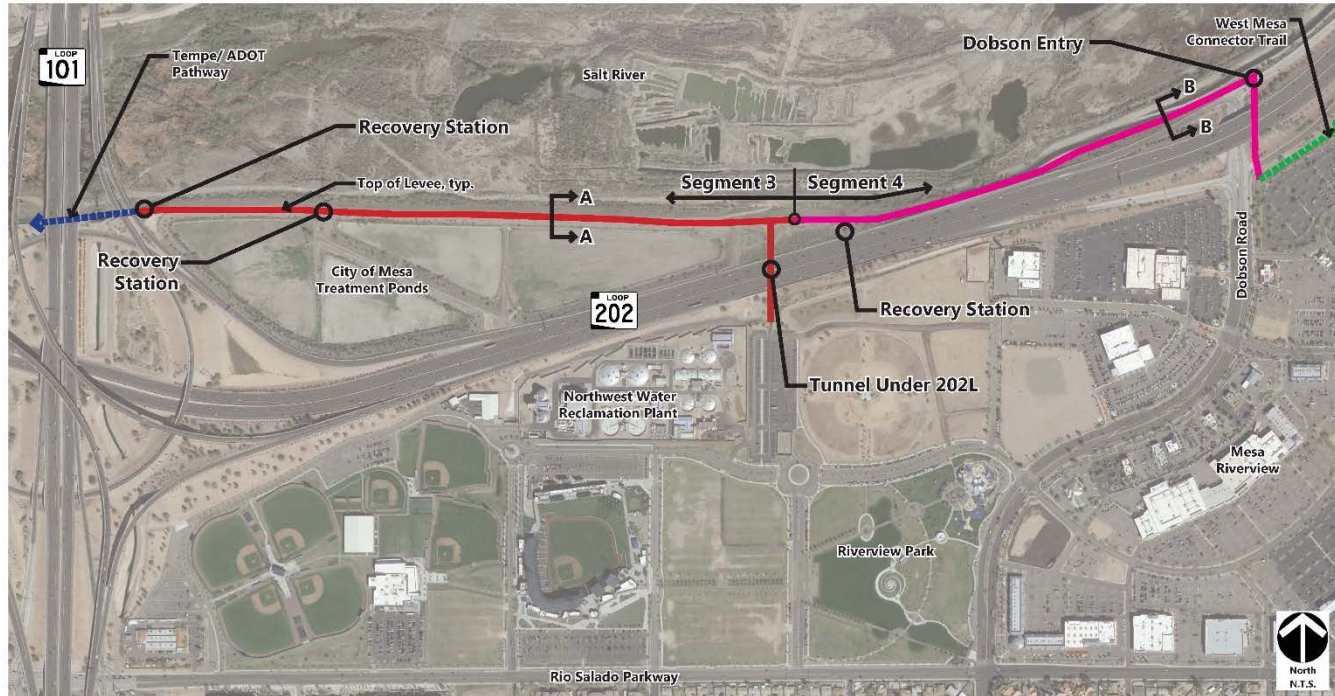
Estimated Completion: July 2016

Cost: \$1.8 Million

Project Details: Pathway from Mesa Drive/8th Street to existing Consolidated Canal Pathway.



Rio Salado Pathway



Length: 1.5 Miles

Phase: Construction

Estimated Completion: Jan-Feb 2017

Cost: \$4.2 Million

Project Details: Pathway from Tempe under the SR101/SR202 Red Mountain to Dobson Road with a tunnel connection to Riverview Park.



Stadium Connector



Length: 2.5 miles

Phase: Securing Construction Contracts

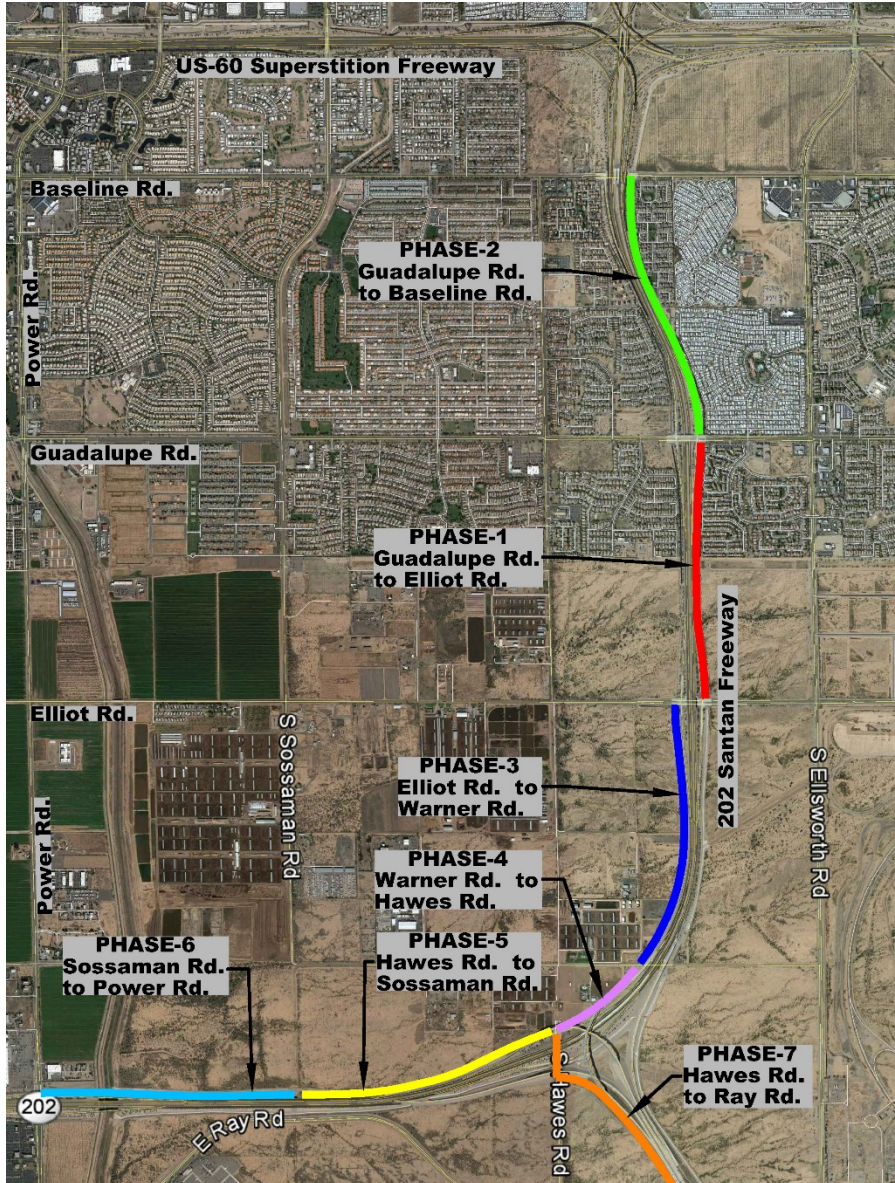
Estimated Completion: May 2017

Cost: \$3.2 Million

Project Details: Connect Hohokam Stadium to Sloan Park via canal pathways, on-street cycle track and pathway on north side of Riverview.



Southeast Pathway



Length: 1 mile

Phase: Design

Estimated Completion: Early Fall of 2017

Cost: \$1.3 Million

Project Details: First phase of pathway along SR202 Santan right of way. From Guadalupe Road to Elliot Road.

