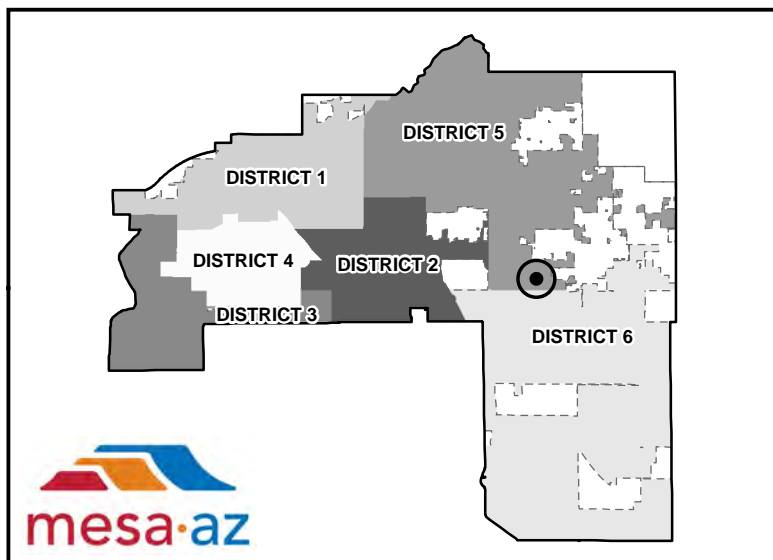
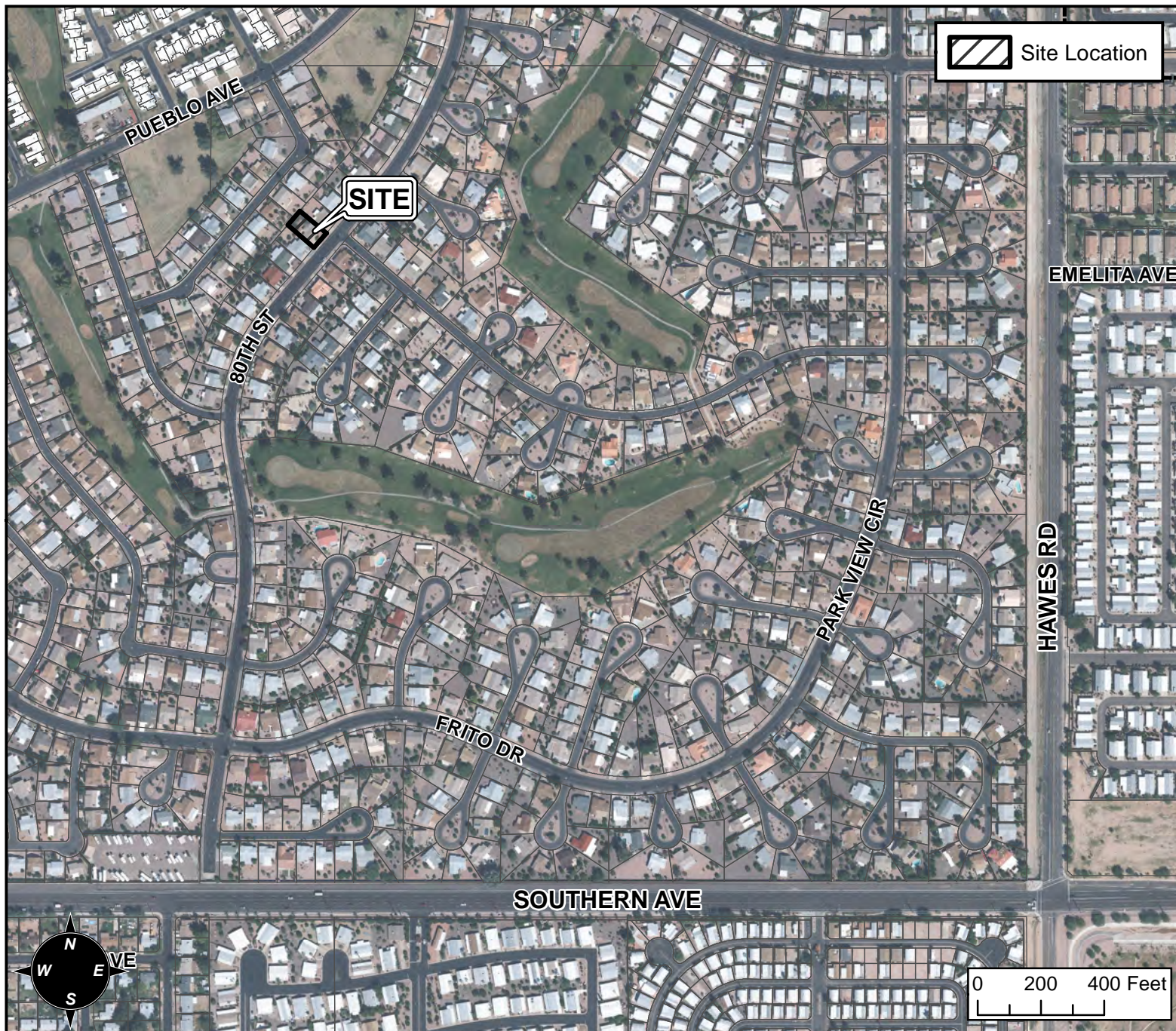


BOARD OF ADJUSTMENT VICINITY MAP: BA16-054



CASE DETAIL

CASE:

BA16-054

SITE / ADDRESS:

856 S 80TH ST. - (DISTRICT 5)

REQUEST:

REQUESTING A MODIFICATION OF PAD FOR ENCLOSURE OF CARPORT INTO GARAGE, AND A REDUCTION OF FRONT YARD GARAGE SETBACK IN THE RS-6-PAD-AS ZONING DISTRICT.