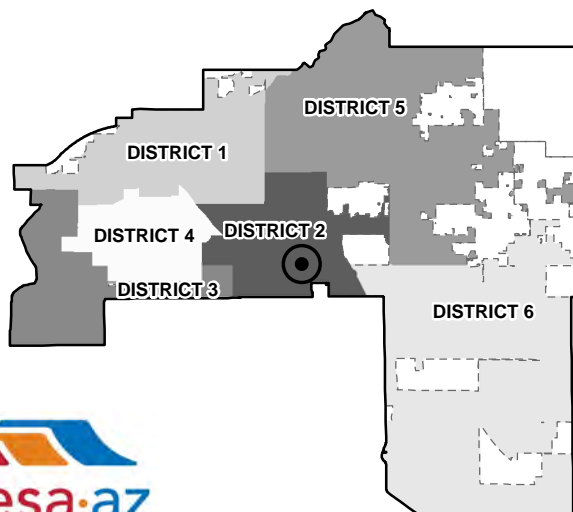
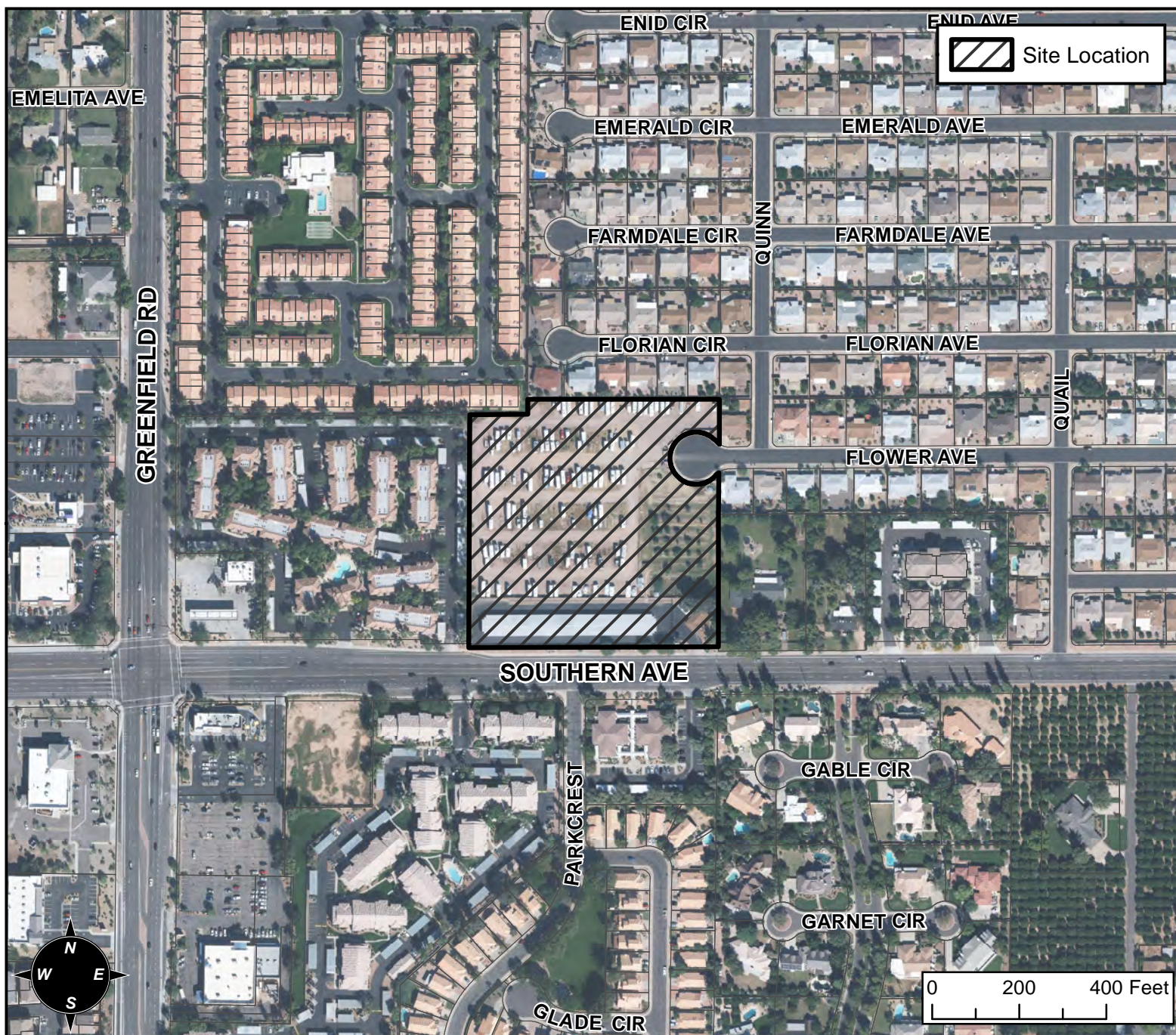


BOARD OF ADJUSTMENT VICINITY MAP: BA16-050



CASE DETAIL

CASE:

BA16-050

SITE / ADDRESS:

4550 E SOUTHERN AVE. - (DISTRICT 2)

REQUEST:

REQUESTING: 1) A SUBSTANTIAL CONFORMANCE IMPROVEMENT PERMIT (SCIP) TO FACILITATE ADDITIONS TO AN EXISTING MINI-STORAGE WAREHOUSE FACILITY IN THE LC ZONING DISTRICT; 2) A SPECIAL USE PERMIT TO ALLOW AN EXISTING RECREATIONAL VEHICLE (RV) STORAGE YARD INITIALLY PROVIDED AS AN ACCESSORY USE TO A RESIDENTIAL MASTER PLAN DEVELOPMENT IN THE RS-6-PAD ZONING DISTRICT TO BE UTILIZED BY THE GENERAL PUBLIC; AND 3) MINOR MODIFICATIONS TO A PLANNED AREA DEVELOPMENT (PAD) OVERLAY DISTRICT RELATED TO DEVELOPMENT STANDARDS FOR THAT SAME RV STORAGE YARD.