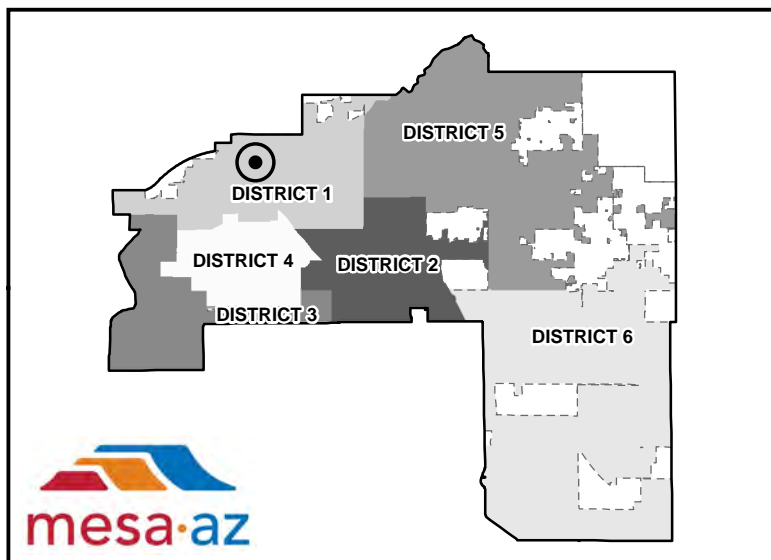
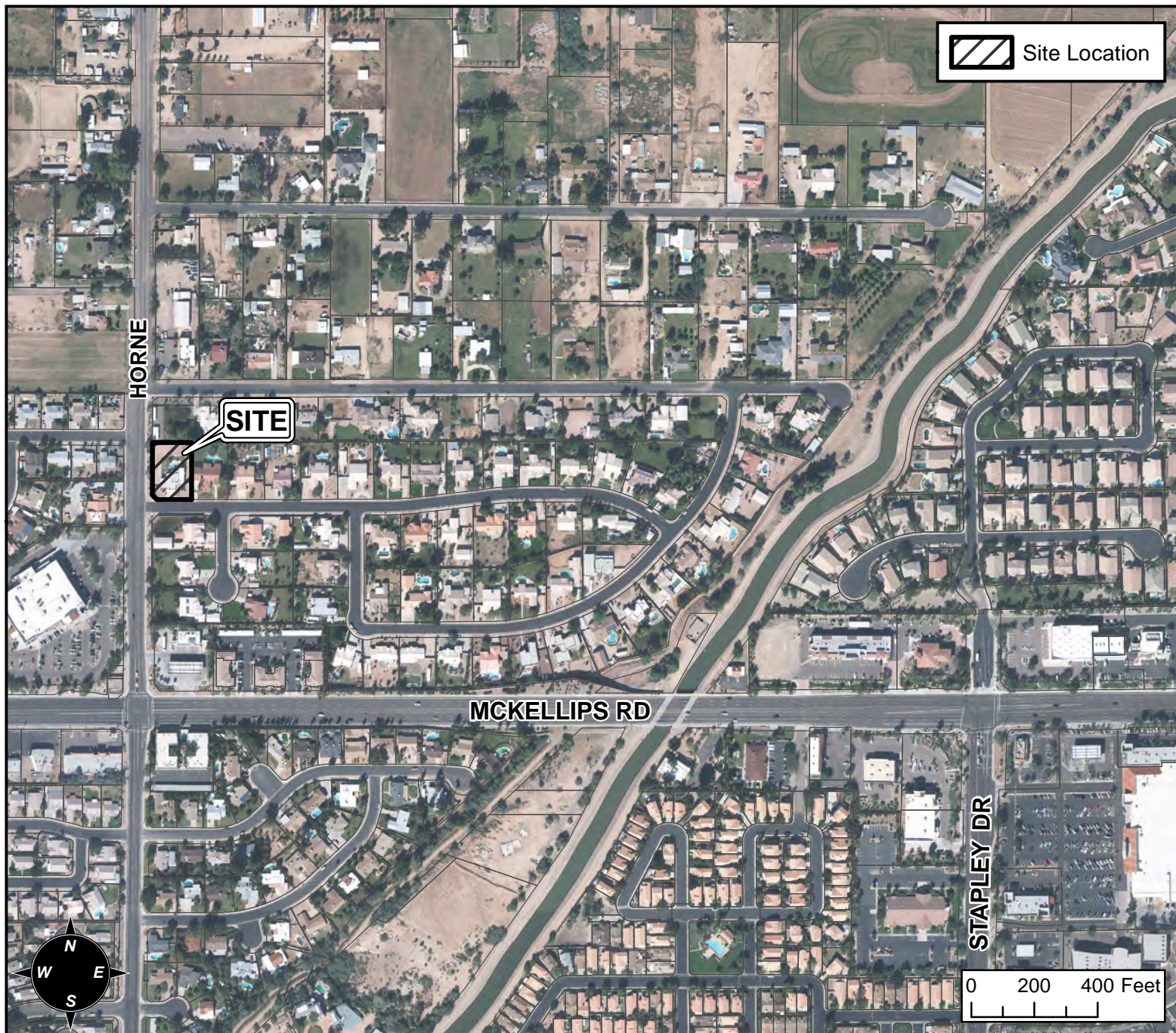


# BOARD OF ADJUSTMENT VICINITY MAP: BA16-056



## CASE DETAIL

### CASE:

BA16-056

### SITE / ADDRESS:

812 E KRAMER ST. - (DISTRICT 1)

### REQUEST:

REQUESTING A VARIANCE TO ENCROACH IN SIDE YARD SET BACK IN THE RS-15-PAD ZONING DISTRICT.