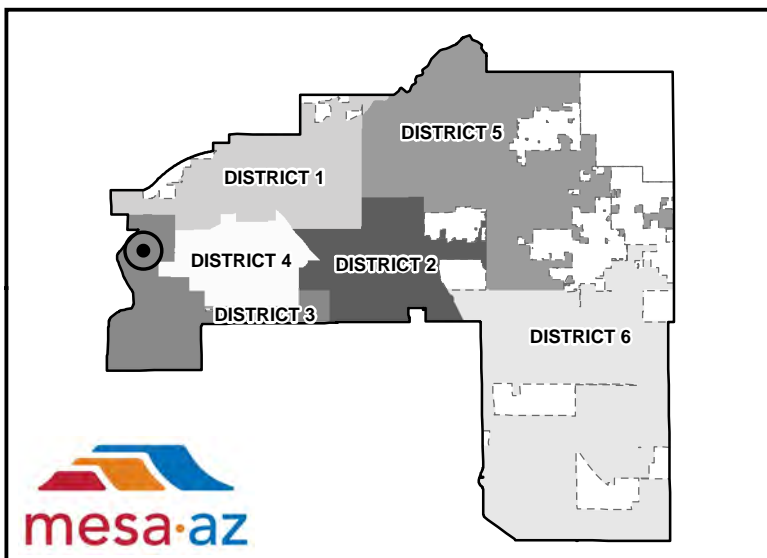
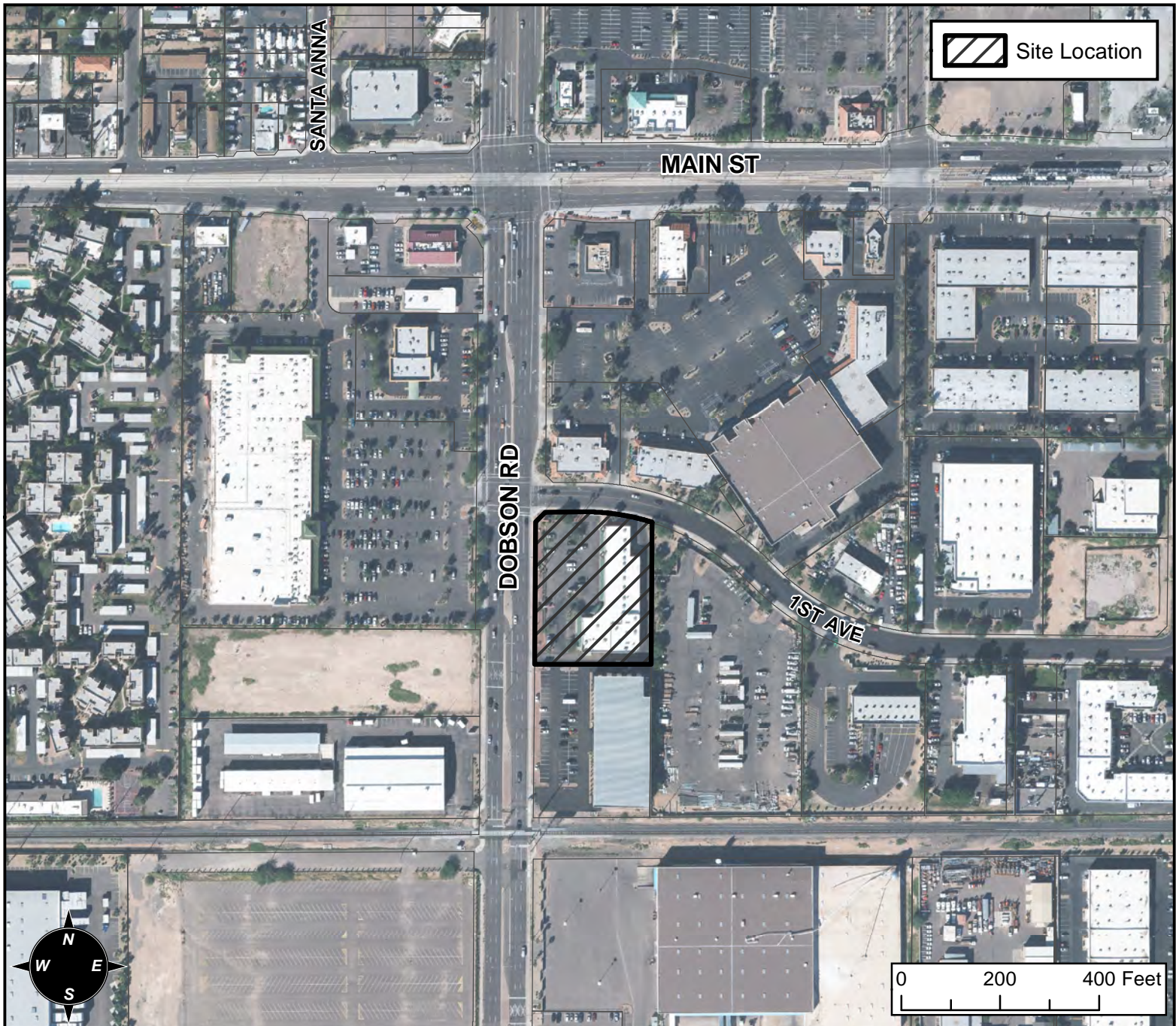


# BOARD OF ADJUSTMENT VICINITY MAP: BA16-051



## CASE DETAIL

### CASE:

BA16-051

### SITE / ADDRESS:

111 S DOBSON RD. - (DISTRICT 3)

### REQUEST:

REQUESTING A SPECIAL USE PERMIT (SUP) FOR AN ALTERNATIVE COMPLIANCE PARKING PLAN WITH TRANSIT ACCESSIBILITY FOR AN EXISTING COMMERCIAL CENTER IN THE LI ZONING DISTRICT.