

**EXHIBIT "A"**  
**LEGAL DESCRIPTION**  
**RIGHT-OF-WAY ABANDONMENT**  
**PARCEL 1**

That portion of the Northwest Quarter of the Northwest Quarter of Section 20, Township 1 North, Range 5 East of the Gila and Salt River Base and Meridian, Maricopa County, Arizona, being a portion of Tract "A" EVANS PARK, according to the plat of record in the office of the Maricopa County Recorder, In Book 84 of Maps, Page 48 described as follows;

Commencing at a 3" City Of Mesa brass cap in hand hole accepted as the Northwest corner of said Section 20, from which a 3" Arizona Highway Department brass cap in hand hole accepted as the North quarter corner thereof bears North 89°18'57" East (Basis of Bearings), a distance of 2737.28 Feet;

Thence South 00°00'14" West, along the West line of said Northwest quarter, a distance of 285.14 feet;

Thence departing said West line, North 89°17'02" East, a distance of 56.00 feet to a point on a line parallel with and 56.00 feet East of said West line of the Northwest quarter;

Thence along said parallel line, North 00°00'14" East, a distance of 85.38 feet to the TRUE POINT OF BEGINNING;

Thence continuing along said parallel line, North 00°00'14" East, a distance of 4.00 feet;

Thence North 89°59'46" East, a distance of 19.01 feet to a point on a line parallel with and 75.00 feet East of said West line of the Northwest quarter;

Thence along said parallel line, South 00°11'25" East, a distance of 4.00 feet;

Thence North 89°59'46" West, a distance of 19.00 feet to the TRUE POINT OF BEGINNING.

Containing 76 square feet, or, 0.002 acres of land, more or less.

**EXHIBIT "A"**  
**LEGAL DESCRIPTION**  
**RIGHT-OF-WAY ABANDONMENT**  
**PARCEL 2**

That portion of the Northwest Quarter of the Northwest Quarter of Section 20, Township 1 North, Range 5 East of the Gila and Salt River Base and Meridian, Maricopa County, Arizona, being a portion of Tract "A" EVANS PARK, according to the plat of record in the office of the Maricopa County Recorder, in Book 84 of Maps, Page 48 described as follows;

Commencing at a 3" City of Mesa brass cap in hand hole accepted as the Northwest corner of said Section 20, from which a 3" Arizona Highway Department brass cap in hand hole accepted as the North quarter corner thereof bears North 89°18'57" East (Basis of Bearings), a distance of 2737.28 Feet;

Thence North 89°18'57" East, along the North line of said Northwest quarter, a distance of 304.11 feet;

Thence departing said North line, South 00°02'46" East, a distance of 45.28 feet;

Thence South 87°22'34" West, a distance of 67.28 feet to the TRUE POINT OF BEGINNING;

Thence South 00°41'00" East, a distance of 17.44 feet to a point on a line parallel with and 65.00 feet South of said North line of the Northwest quarter;

Thence along said parallel line, South 89°18'57" West, a distance of 4.00 feet;

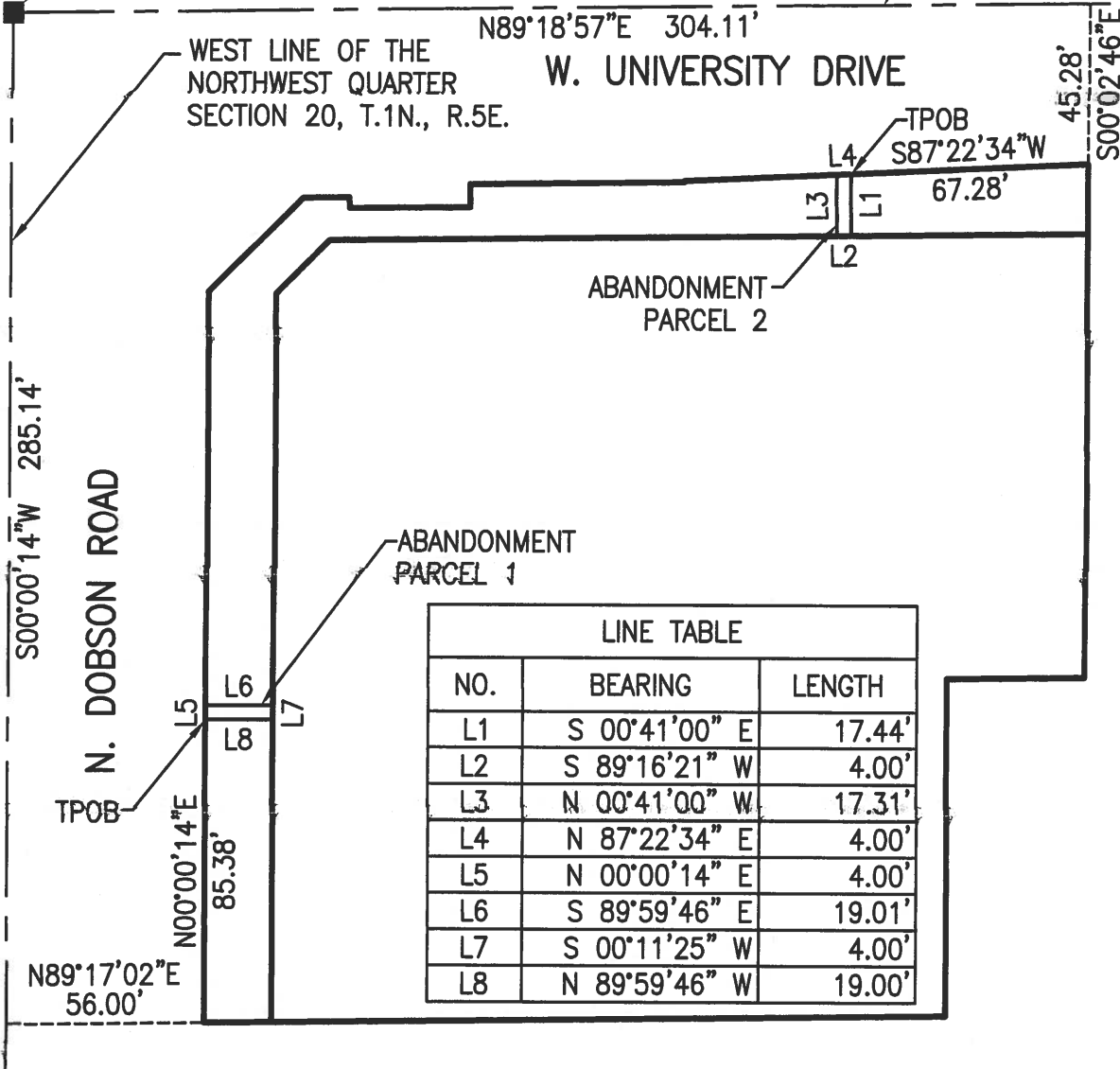
Thence North 00°41'00" West, a distance of 17.31 feet;

Thence North 87°22'34" East, a distance of 4.00 feet to the TRUE POINT OF BEGINNING;

Containing 70 square feet, or, 0.002 acres of land, more or less.

POC  
NORTHWEST CORNER  
SECTION 20, T.1N., R.5E.  
POINT OF COMMENCEMENT

NORTH LINE OF THE  
NORTHWEST QUARTER  
SECTION 20, T.1N., R.5E.



LINE TABLE		
NO.	BEARING	LENGTH
L1	S 00°41'00" E	17.44'
L2	S 89°16'21" W	4.00'
L3	N 00°41'00" W	17.31'
L4	N 87°22'34" E	4.00'
L5	N 00°00'14" E	4.00'
L6	S 89°59'46" E	19.01'
L7	S 00°11'25" W	4.00'
L8	N 89°59'46" W	19.00'



NO SCALE

NOTE:  
ALL VALUES SHOWN ARE CALCULATED, UNLESS NOTED  
OTHERWISE.

**Helix Engineering, LLC**

Engineering / Surveying / Consulting  
3240 E Union Hills, Suite 112, Phoenix, AZ 85050  
(ph) 602-788-2616, www.hxeng.com

EXHIBIT "B"  
RIGHT-OF-WAY ABANDONMENT

DRAWN BY: MJT  
CHECKED BY: SB

APRIL 11, 2016

JOB No.: 159

SHEET 1 OF 1