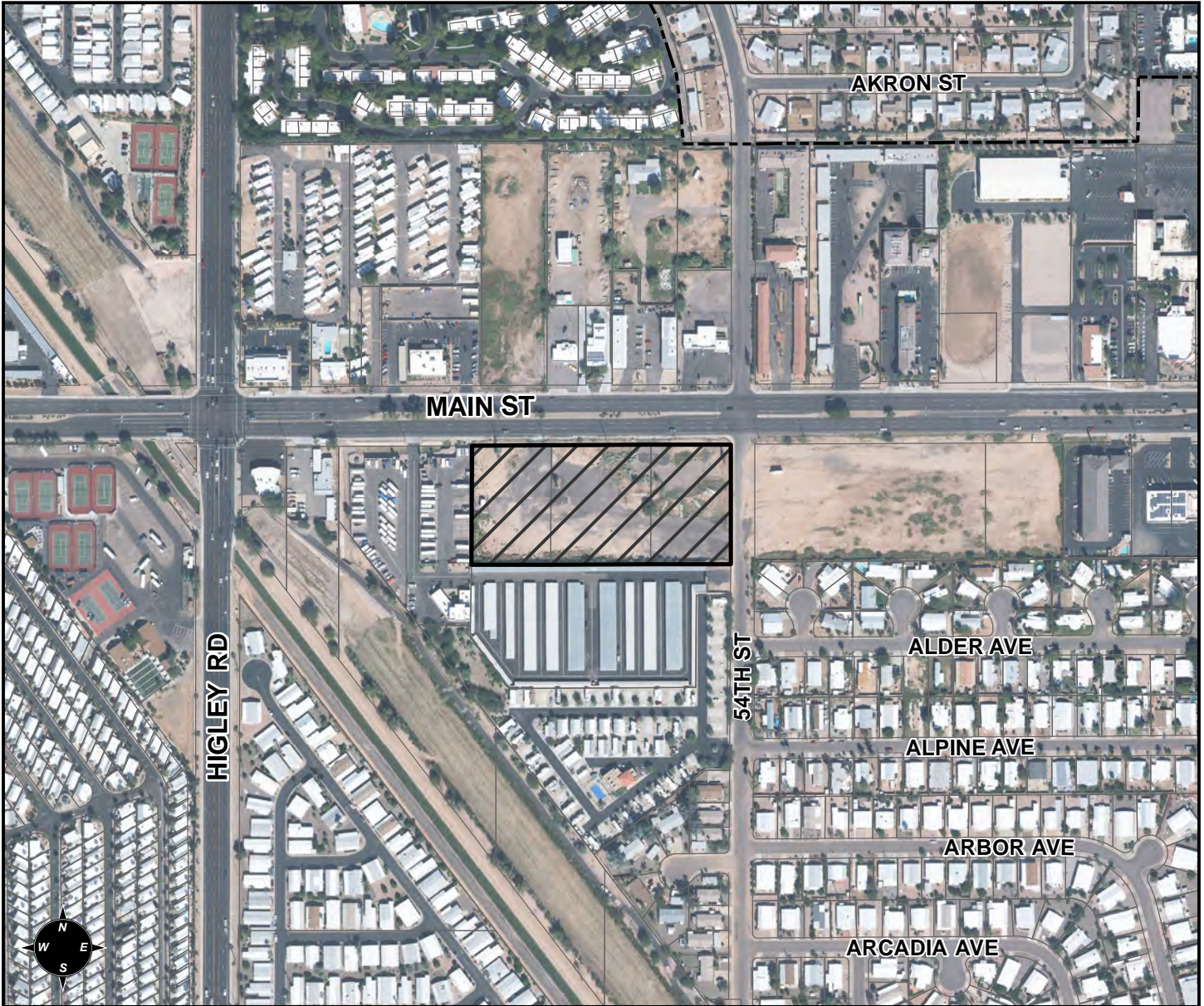


# FINAL PLAT VICINITY MAP



## FINAL PLAT DETAILS

### PROJECT:

54TH STREET BUSINESS PARK

### LANGUAGE:

"54TH STREET BUSINESS PARK" – (DISTRICT 2) THE 5300 TO 5400 BLOCKS OF EAST MAIN STREET (SOUTH SIDE). LOCATED EAST OF HIGLEY ROAD ON THE SOUTH SIDE OF MAIN STREET. 8 GC COMMERCIAL LOTS. (6.93 ACRES). EML 54TH STREET, LLC, DEVELOPER. WILLIAM H. STANDAGE, STANDAGE AND ASSOCIATES, LTD., SURVEYOR.

