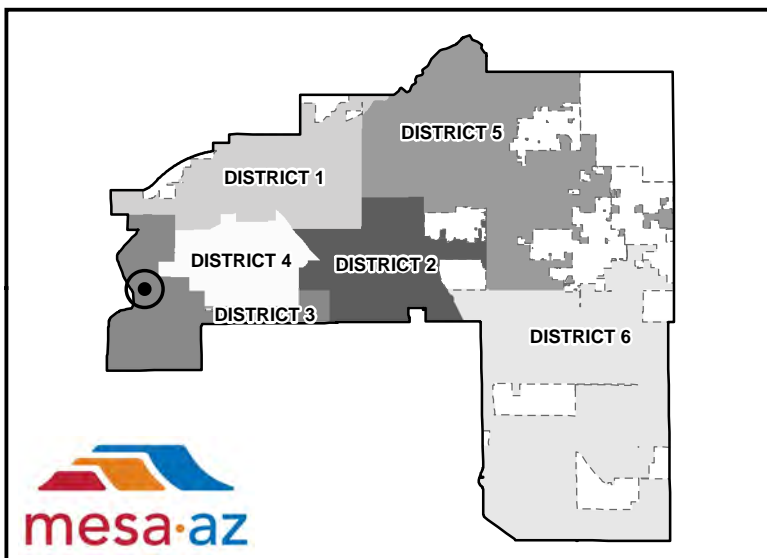
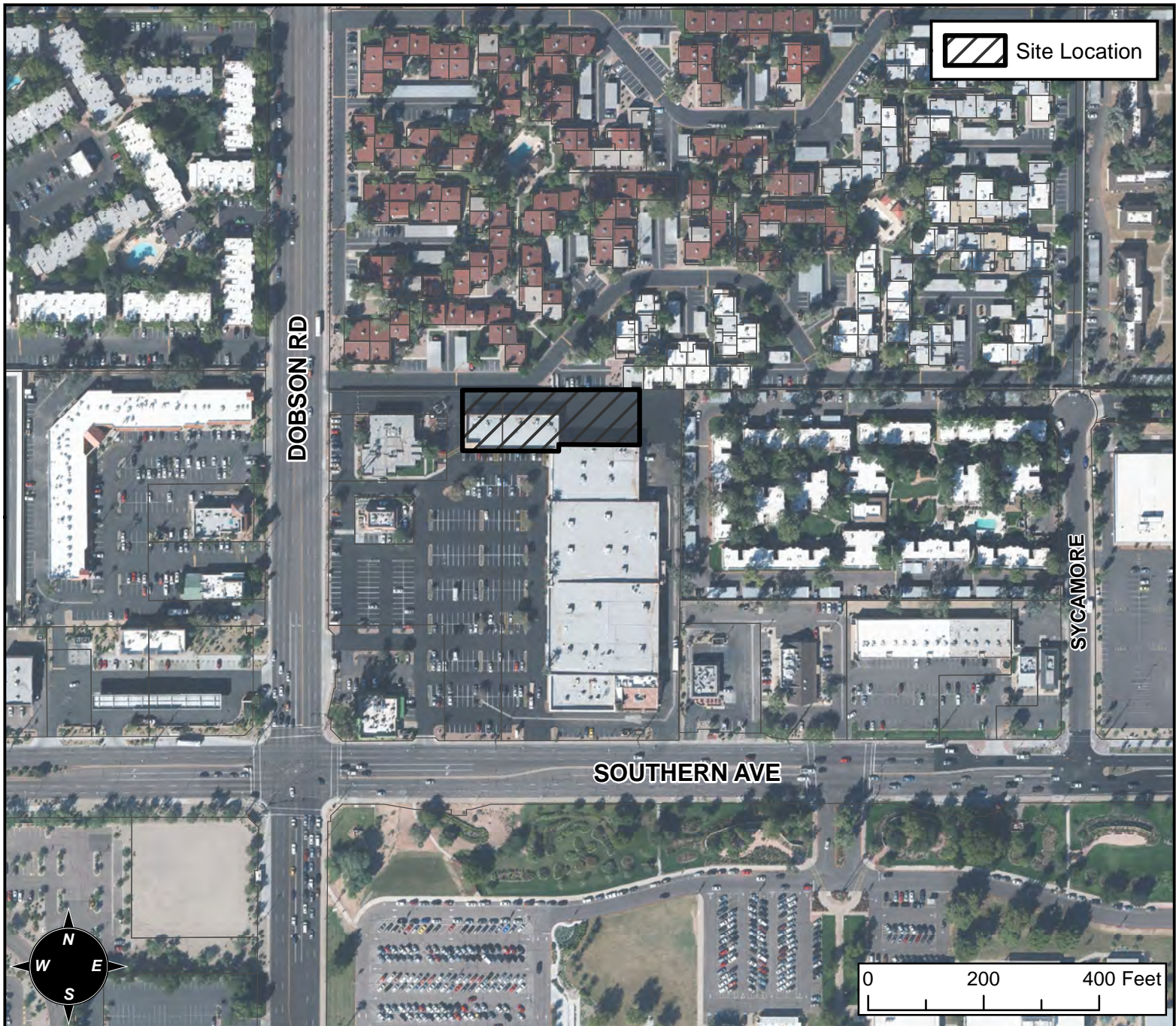


BOARD OF ADJUSTMENT VICINITY MAP: BA16-038



CASE DETAIL

CASE:

BA16-038

SITE / ADDRESS:

1133 S DOBSON ROAD - (DISTRICT 3)

REQUEST:

REQUESTING A SUBSTANTIAL CONFORMANCE IMPROVEMENT PLAN (SCIP) TO ALLOW MODIFICATIONS TO DEVELOPMENT STANDARDS ASSOCIATED WITH PLACEMENT OF A CHILDCARE FACILITY WITHIN AN EXISTING COMMERCIAL CENTER IN THE LC ZONING DISTRICT.