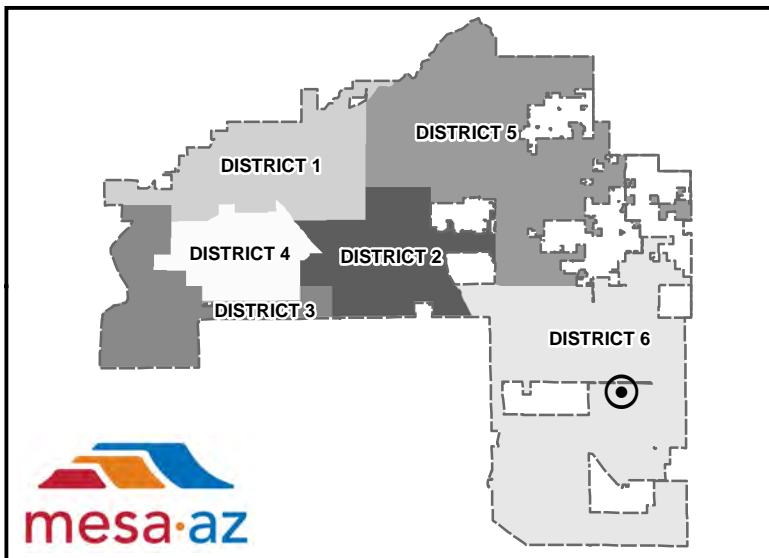
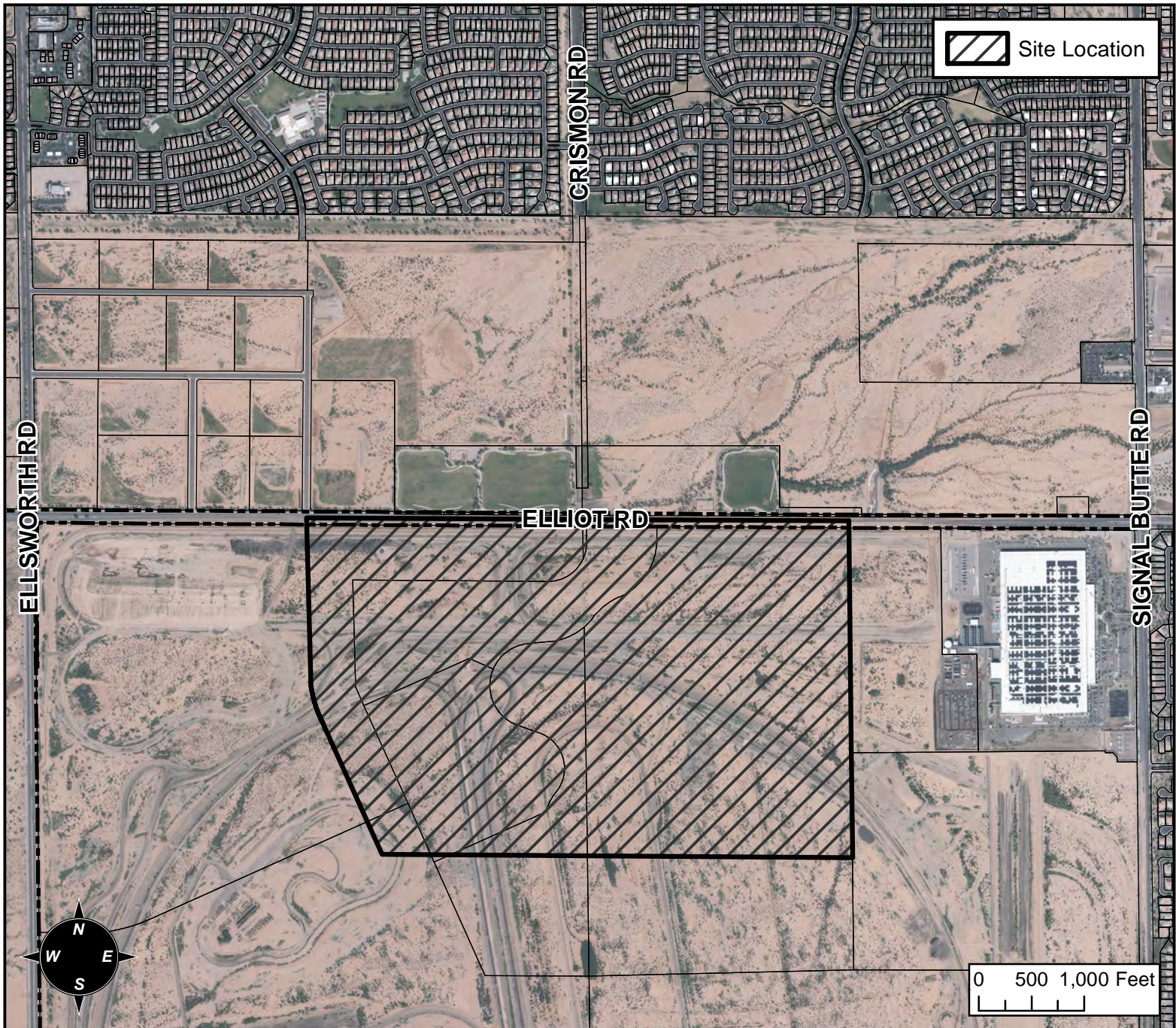


PLANNING AND ZONING VICINITY MAP: Z16-042



CASE DETAILS

CASE:

Z16-042

PRE-PLAT : ☐

SITE / ADDRESS:

9600 TO 10400 BLOCKS OF E ELLIOT RD (SOUTH SIDE)
- (DISTRICT 6)

REQUEST:

DEVELOPMENT UNIT PLAN REVIEW. THIS REQUEST WILL ESTABLISH A DEVELOPMENT UNIT PLAN FOR DEVELOPMENT UNIT 5 NORTH OF THE EASTMARK (MESA PROVING GROUNDS) COMMUNITY PLAN.